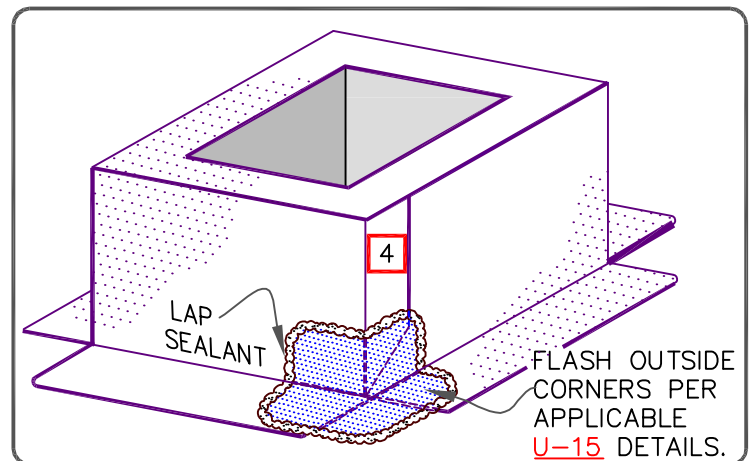


FASTENERS INTO DECK

NOTES:

1. IN CASE THE THREADED FASTENERS ARE USED TO PENETRATE THE METAL COUNTER-FLASHING, USE EPDM WASHERS, APPLY WATER CUT-OFF MASTIC UNDER THE COUNTER-FLASHING OR SEAL THE FASTENER HEADS WITH SEALANT.
2. 3" (7.5cm) FOR UP TO 25 YEARS AND 6" (15cm) FOR 30 YEARS WARRANTY.
3. HP FASTENERS AND POLYMER SEAM PLATES ARE REQUIRED FOR MECHANICALLY-FASTENED ROOFING SYSTEMS OVER STEEL DECKS.
4. IF THE VERTICAL SPLICE ON THE CURB FLASHING IS NOT LOCATED AT THE CORNER, USE DETAIL [U-2C](#) FOR EPDM MEMBRANE SPLICES AT ANGLE CHANGES.



CURB FLASHING – WITH 20"
PRESSURE-SENSITIVE CURED
FLASHING

MAXIMUM WARRANTY: 30 YEARS



DETAIL NO.

U-5C

U (UNIVERSAL DETAIL)