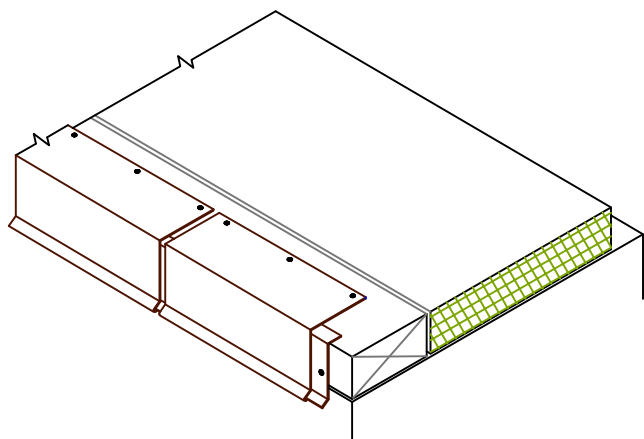
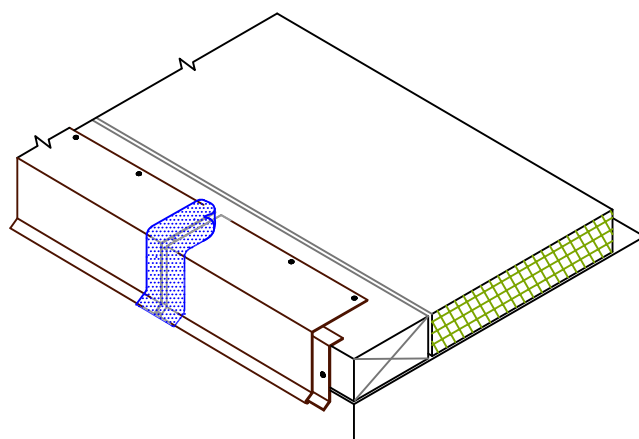


1



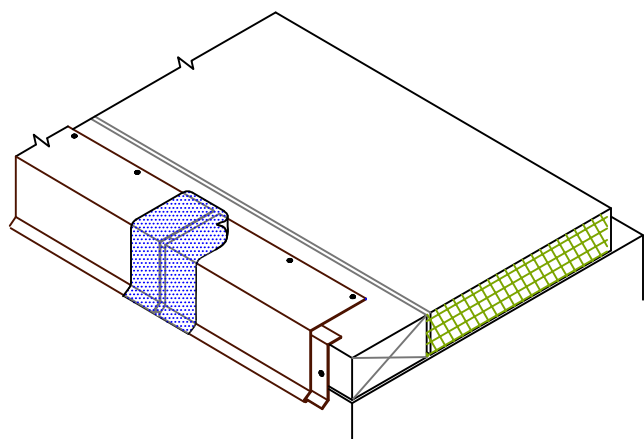
INSTALL CONTINUOUS CLEAT AND COATED METAL WITH 1/8"–1/4" (0.5cm–1cm) JOINTS BETWEEN ADJOINING SECTIONS.

2



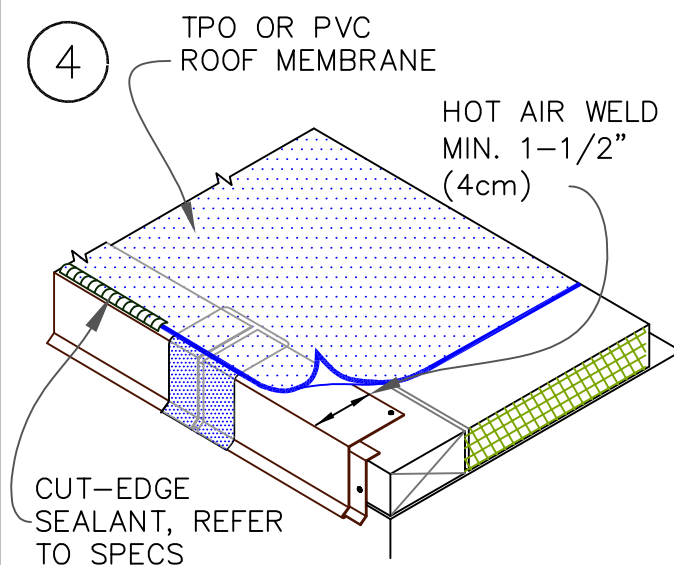
HEAT WELD 3" (7.5cm) WIDE PIECE OF NON-REINFORCED THERMOPLASTIC MEMBRANE OVER JOINT.

3



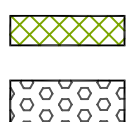
HEAT WELD 6" (15cm) WIDE PIECE OF NON-REINFORCED MEMBRANE OVER THE JOINT.

4

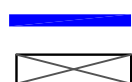


POSITION FIELD MEMBRANE AND HEAT WELD TO COATED METAL A MINIMUM OF 1-1/2" (4cm) AS SHOWN.

### EAVE/RAKE EDGE (COATED METAL FASCIA)



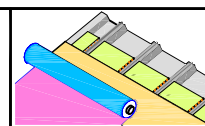
• HIGH DENSITY  
RECOVER BOARD



• ROOF MEMBRANE  
• WOOD NAILER (BY OTHERS)

0

• SEE DRAWING NOTE(S)



SHEET NO.

MRIT1.1B

PAGE 2 OF 2