



Productivity Booster Quick Reference Guide



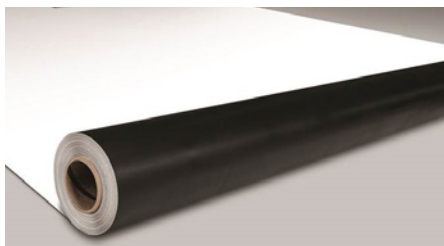
Sure-Flex™ PVC with APEEL™ Protective Film

Carlisle's patented APEEL Protective Film guards the surface of PVC and KEE HP membranes from scuffs and dirt accumulation during installation, eliminating the need to clean the roof once the project is complete. Durable and easy to remove, APEEL Protective Film helps save time and labor, improves aesthetics, and maintains reflectivity. Sure-Flex PVC membranes with APEEL Protective Film are ideal for re-roofing, re-cover, and new construction projects.



CAV-PRIME Membrane Primers

Carlisle's CAV-PRIME system features primer in pressurized cylinders for faster application and less waste. The CAV-PRIME backpack, applicator attachment, and 3-foot extension gun make applying primer to seams and areas where Pressure-Sensitive flashing is used up to 3 times faster than dunking a roller in a pail.



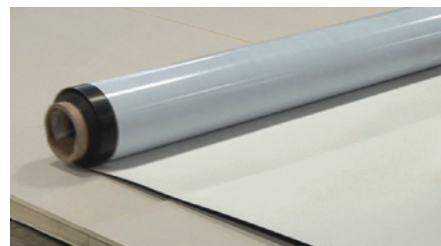
16-Foot Sure-Weld® TPO Membrane

Carlisle's introduction of the industry's first-ever 16-foot-wide TPO sheet brings labor savings and efficiency to get more done in less time. With fewer rolls to load on to the roof, less time spent positioning and kicking out rolls, and fewer seams to weld, 16-foot wide TPO is the fastest and most efficient way to install adhered and induction welded TPO roofs.



Flexible FAST™ HFO Dual Tank Adhesive

Flexible FAST HFO Dual Tanks contain a hydrofluoroolefin (HFO) blowing agent that is widely recognized as the most environmentally friendly option available, drastically reducing Global Warming Potential (GWP). Offering an eco-friendly solution that provides increased performance makes the next generation of Flexible FAST Dual Tanks an ideal option for new construction and re-roofing projects.



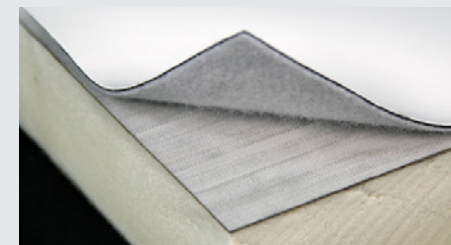
Sure-Weld SAT™ (Self-Adhering Technology) TPO Membrane

Heat-weldable SAT TPO membrane comes with pre-applied adhesive to help save time, labor, and product. Eliminating the need to apply bonding adhesive and wait for flash-off provides up to 80% labor savings compared to traditional installations.



CAV-GRIP® PVC Adhesive

Revolutionize your adhesive needs with CAV-GRIP PVC Aerosol Contact Adhesive. This versatile solution is perfect for a multitude of applications: Secure PVC bareback membranes to various horizontal surfaces and vertical walls (excluding KEE or KEE HP bareback membranes). Achieve exceptional adhesion when attaching FleeceBACK membranes to vertical walls. CAV-GRIP PVC's cutting-edge, low-VOC formula ensures robust bonding and rapid drying across a wide temperature range. Applying it is a breeze with the integrated spray systems, guaranteeing swift and uniform coverage while keeping cleanup and maintenance to a minimum.



FleeceBACK® RapidLock (RL™) Roofing Systems

RapidLock (RL) is an adhesive-less system that uses VELCRO® Brand Securable Solutions to attach 115-mil FleeceBACK RL EPDM or FleeceBACK RL TPO to InsulBase® RL or SecurShield® HD RL polyiso insulation. With performance on par with traditional fully adhered single-ply systems, RapidLock systems provide up to 80% labor savings compared to installations using traditional bonding adhesive and up to 25% labor savings compared to installations of traditional FleeceBACK systems.

Awards and Recognitions

- » "Best Commercial Product" at the 2018 International Roofing Expo
- » Roofing Contractor 2018 Editor's Choice for "New Roofing Innovation"

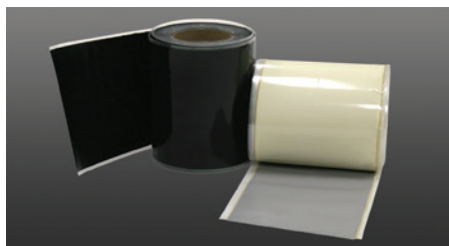


Scan to learn more about
**FleeceBACK RapidLock (RL)
Roofing Systems.**

www.carlisesyntec.com/Roofing-Products/Specialty/RapidLock



Productivity Booster Quick Reference Guide



Sure-Seal® EPDM Pressure-Sensitive (PS) Elastoflash Flashing®

Carlisle's Sure-Seal EPDM Pressure-Sensitive (PS) Elastoflash Flashing is a nominal 60-mil-thick (1.5 mm) uncured EPDM membrane, laminated to a nominal 30-mil-thick (0.75 mm), fully cured PS adhesive. This product is easily malleable and highly adaptable to irregular shapes and surfaces. PS Elastoflash Flashing is self-curing and can be used to flash pipes and scuppers, as well as other rooftop structures and penetrations. The clear poly release liner on the 12"-wide product is pre-slit down the center, allowing the applicator to partially remove the liner for ease of installation. Available in Gray and Black.



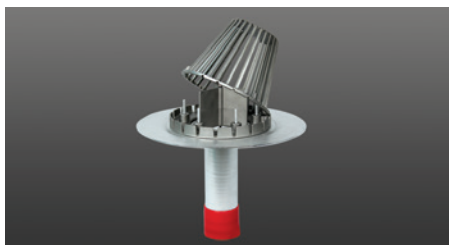
Sure-White® EPDM 20" Pressure-Sensitive Cured Flashing

Sure-White 20" PS Cured Flashing features a monolithic 20" of SecurTAPE™ and offers an effective, labor-saving way to flash curbs and pipes. Production time on projects with numerous curbs or wall flashings can be significantly reduced.



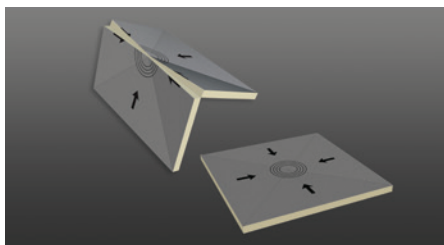
Dual-Tip Spray Applicator for CAV-GRIP III

Carlisle SynTec Systems is pleased to introduce its Dual-Tip Spray Applicator, which is specially designed for use with CAV-GRIP III Adhesive systems. This productivity-boosting tool is a precision-machined dual-tip attachment that reduces application time by spraying two streams of adhesive with a single CAV-GRIP Spray Gun and Hose. In addition to reduced application time, the Dual-Tip Spray Applicator improves application consistency without impacting adhesive flow or coverage rates.



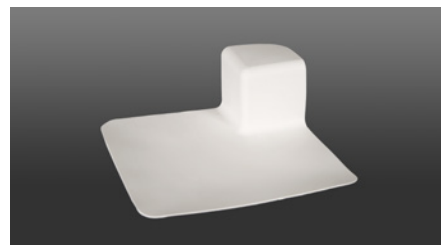
SpeedTite® Roof Drains

SpeedTite Roof Drains provide a smooth, consistent flow rate and eliminate the "chugging" that can damage plumbing systems. SpeedTite drains are "drop-in ready" for installation, can be made watertight in minutes, and feature a mechanical seal that exceeds the ANSI/SPRI RD-1 Standard for backflow prevention.



Target Sumps™

Target Sumps can be used to add slope at the drains on structurally sloped decks or to start a four-way tapered design. Target Sumps are factory-fabricated to ensure consistency, are available in a variety of slopes and thicknesses, and are offered with standard and SecurShield (coated glass) facers. Custom thicknesses are also available.



Sure-Weld TPO and Sure-Flex PVC Universal Corners

Pre-molded TPO and PVC Universal Corners require no stretching and are ideal for flashing both inside and outside corner details, saving up to 60% on labor compared to field fabrication.

Stay Connected

Get the most up-to-date information on all our productivity boosting products.



www.facebook.com/CarlisleSynTec



www.linkedin.com/company/carlislesyntec



@carlislesyntec



@carlislesyntec



Look for the Productivity Booster icon.