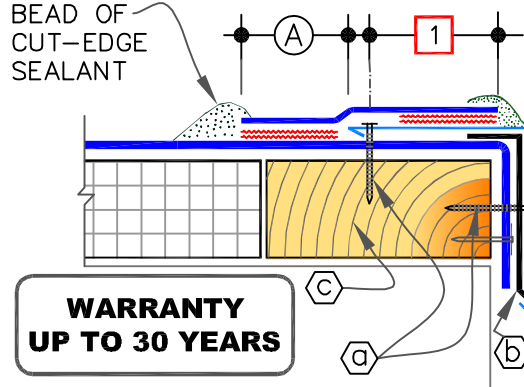


CAUTIONS

- DETAIL B** IS NOT RECOMMENDED FOR ROOFS THAT ARE LIKELY TO EXPERIENCE SIGNIFICANT SNOW AND ICE UP-SLOPE FROM THE GUTTER /EDGE. REFER TO DETAILS [TPC-1.2](#) OR [TPC-1.3](#).
- FOR 30-YEAR WARRANTY PROJECTS, SEE ALSO DETAILS [TPC-1.2](#), [1.3](#), [1.4](#), [1.5](#), & [1.6](#)

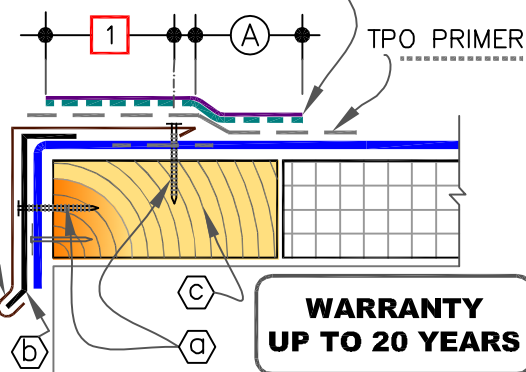
APPROXIMATELY
1/8" (0.5cm)
DIAMETER
BEAD OF
CUT-EDGE
SEALANT



VERSITRIM DRIP
EDGE FASCIA OR
METAL FASCIA
(BY OTHERS)

VERSITRIM
HEAT WELDABLE
DRIP EDGE
FASCIA

6" (15cm) WIDE VERSIWELD
PRESSURE-SENSITIVE COVER
STRIP



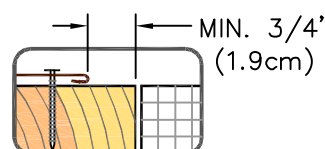
A VERSITRIM HEAT WELDABLE DRIP EDGE FASCIA

B VERSITRIM DRIP EDGE FASCIA

a M1-1/2" (3.8cm) RING SHANK NAILS
6" (15cm) O.C. MAX.

b MINIMUM 22-GAUGE CONTINUOUS
CLEAT.

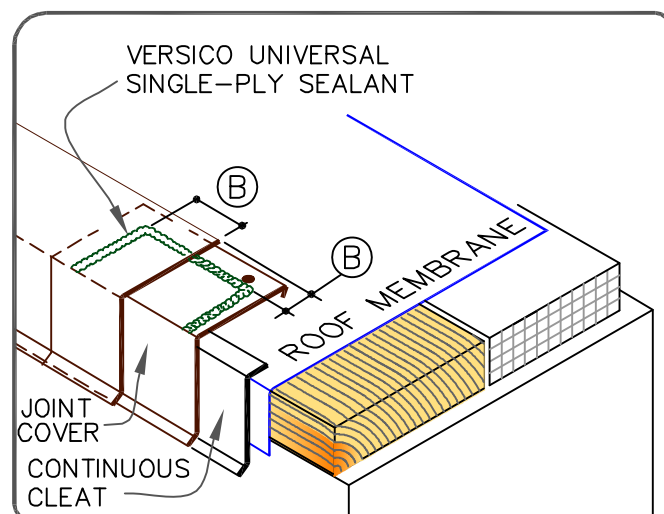
c WOOD NAILER (BY OTHERS)



| DIMENSIONS | | cm | |
|------------|------|-----|------|
| A | 2" | 5 | MIN. |
| B | 1/2" | 1.5 | TO |
| | 1" | 2.5 | |

NOTES:

- METAL FASCIA DECK FLANGE MUST BE TOTALLY COVERED BY TPO PEEL & STICK COVER STRIP WITH MINIMUM 2" (5cm) COVERAGE PAST NAIL HEADS.
- TO REMOVE FINISHING OILS, SCRUB METAL FLANGE WITH WEATHERED MEMBRANE CLEANER; ALLOW TO DRY PRIOR TO APPLYING TPO PRIMER.
- WHEN METAL FASCIA BY OTHERS IS USED, FASTENER TYPE AND FASTENING FREQUENCY SHALL BE RECOMMENDED BY METAL EDGE MANUFACTURER.
- TO ENSURE TPO PEEL & STICK COVER STRIP CONFORMS TO STEP-OFFS, HEAT COVER STRIP AT SPLICE INTERSECTIONS PRIOR TO ROLLING.



VERSITRIM DRIP EDGE FASCIA

MAXIMUM WARRANTY: 20 YEARS

| | |
|--|-------------------------|
| | TPO MEMBRANE |
| | APPROVED SUBSTRATE |
| | SEE NOTE |
| | PS (PRESSURE SENSITIVE) |
| | P&S (PEEL & STICK) |
| | QA (QUICK APPLIED) |

THERMOPLASTIC
ROOFING SYSTEM

TPC-1.1