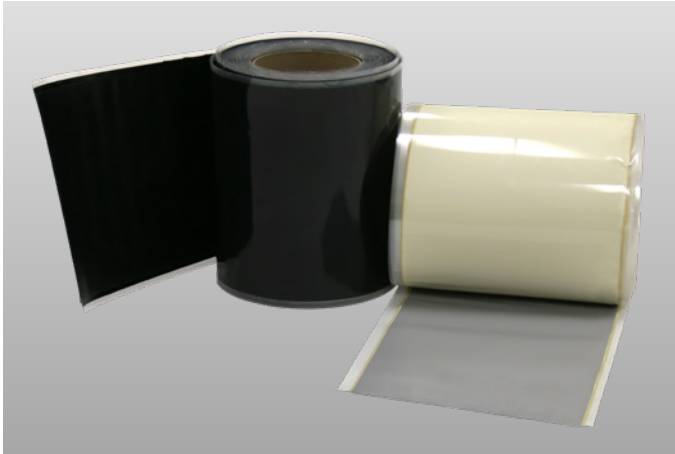


# Sure-Seal® EPDM

## Pressure-Sensitive Elastofom Flashing®



### Overview

Carlisle's Sure-Seal EPDM Pressure-Sensitive (PS) Elastofom Flashing is a nominal 60-mil-thick (1.5 mm) uncured EPDM membrane, laminated to a nominal 30-mil-thick (0.75 mm), fully cured PS adhesive. This product is easily malleable and highly adaptable to irregular shapes and surfaces. PS Elastofom Flashing is self-curing and can be used to flash pipes and scuppers, as well as other rooftop structures and penetrations. The clear poly release liner on the 12"-wide product is pre-slit down the center, allowing the applicator to partially remove the liner for ease of installation.

### Features and Benefits

- » Black and Gray available in 6" x 100', 9" x 50', and 12" x 50' rolls
- » Gray is approved for use on Gray TPO membrane
- » Adaptable to irregular shapes and surfaces
- » Self-curing membrane
- » Labor and cost savings in field applications

### Installation

1. The entire surface where the PS Elastofom Flashing will be applied must be clean. The adhesive on the back of the PS Elastofom Flashing will not adhere to dusted or dirty surfaces. Any residual contamination will be detrimental to the bond strength of the adhesive.
2. Remove all foreign material.
  - a. Remove excess mica dust by brooming or wiping with a clean, dry rag or Carlisle HP Splice Wipe.
  - b. The use of Weathered Membrane Cleaner may be necessary. This process is essential on membrane that has been exposed for a number of weeks.

Note: Permeation-resistant gloves (that meet ANSI/ISEA 105-2005) are required for hand protection when cleaners or primers are being used.

- c. Allow the membrane to dry thoroughly before proceeding.
3. Apply HP-250 or Low-VOC Primer per instructions on respective product data sheets. Review Carlisle specifications and details for complete installation information.

Note: The use of excessive amounts of primer will not significantly enhance the adhesion of the PS Elastofom Flashing to the EPDM membrane. Use only the amount necessary to obtain 100% coverage of the area where the PS Elastofom Flashing will be applied.

4. Allow the primer to flash-off until it does not transfer to a dry finger touch yet remains tacky. Install the pressure-sensitive product immediately after the primer has flashed-off to promote adhesion and avoid contamination.
5. Position the flashing over the area to be covered and press down the exposed tape adhesive using firm, even hand pressure across the entire area. Install the elongated diamond pattern parallel to the deck when flashing corners or vertical pipe wraps.
6. Immediately roll the PS Elastofom Flashing with a 2"-wide (50 mm) roller, using positive pressure. Roll across the flashing edge, not parallel to it. Install the elongated diamond pattern parallel to the deck when flashing corners or vertical pipe wraps.
7. When temperatures fall below 40°F (4°C) or when nearing the shelf life, heat the flashing with a hot-air gun to avoid bridging and aid in formability.
8. Apply Lap Sealant (Black) or Universal Single-Ply Sealant (Gray) to the outside edge of the flashing. Prime the surface prior to applying Gray Universal Single-Ply Sealant.

# Sure-Seal EPDM

## Pressure-Sensitive Elastoform Flashing

- PS Elastoform Flashing is used to flash many different roofing system structures and penetrations. The specific method of applying the flashing for each individual situation is different. The appropriate Carlisle specification and/or detail must be consulted prior to application.

Review Carlisle specifications and details for complete installation information.

### Precautions

- » Avoid prolonged contact with skin. In case of contact with skin, thoroughly wash affected area with soap and water.
- » Prolonged jobsite storage temperatures in excess of 90°F (32°C) will shorten product shelf life.
- » In warm, sunny weather, keep PS Elastoform Flashing rolls in their box and in a shaded area until ready to use.
- » Storage and use of PS Elastoform Flashing at temperatures below 40°F (4°C) will result in a loss of adhesive tack and, in extreme cases, will result in no bond to the substrate. Overnight storage must be available to keep the temperature of the PS Elastoform Flashing at a minimum of 60°F (15°C). Hot boxes for jobsite storage must be provided to maintain a minimum product temperature of 40°F (4°C).
- » PS Elastoform Flashing must be stored in a dry area. It is recommended to store the flashing below 80°F (27°C) to ensure maximum formability and shelf life.
- » Due to solvent flash-off, condensation may form on applied primer when the ambient temperature is near the dew point. If condensation develops, the application of primer and PS Elastoform Flashing must be discontinued as proper adhesion will not be achieved. Allow the surface to dry and reapply primer to the previously coated surface. Apply PS Elastoform Flashing when conditions allow.
- » Do not allow waste products (petroleum, grease, oil, solvents, vegetable or mineral oils, animal fats, etc.) or direct steam venting to come in contact with the PS Elastoform Flashing.
- » A heat gun is required when forming PS Elastoform Flashing in colder temperatures or when nearing the shelf life.
- » KEEP OUT OF THE REACH OF CHILDREN.

### Typical Properties and Characteristics

|   |  |
|---|--|
| Color   | Black or Gray  |
| Base Membrane Adhesive  | EPDM Synthetic Rubber  |
| Ozone Resistance Condition after exposure to 100 pphm Ozone in air for 168 hours @ 104°F (40°C). Specimen under 50% strain. | No cracks  |
| Brittleness Temp  | -49°F (-45°C)  |
| Nominal Thickness   | 90 mil (2.25 mm)   |
| Nominal Width Membrane Adhesive   | 6" (150 mm), 9" (225 mm), 12" (300 mm), 6 <sup>3</sup> / <sub>16</sub> " (155 mm), 9 <sup>3</sup> / <sub>16</sub> " (230 mm), 12 <sup>3</sup> / <sub>16</sub> " (305 mm) |
| Net Weight Per Roll   | 6" = 30 lbs (13.6 kg)<br>9" = 24 lbs (10.9 kg)<br>12" = 32 lbs (14.5 kg)   |
| Packaging   | 6" = 2 rolls/carton, 100' (30 m)<br>9" = 1 roll/carton, 50' (15 m)<br>12" = 1 roll/carton, 50' (15 m)  |
| Shelf Life  | 9 months when stored between 60° – 80°F (15° – 27°C)   |

Typical properties and characteristics are based on samples tested and are not guaranteed for all samples of this product. This data and information is intended as a guide and does not reflect the specification range for any particular property of this product.

Sure-Seal Pressure-Sensitive Elastoform Flashing meets or exceeds the minimum requirements set forth by ASTM D4811 for a Type 1 (EPDM), Class V (cures on the roof) flashing material.

### LEED® Information

|                                |                |
|--------------------------------|----------------|
| Pre-consumer Recycled Content  | 0%             |
| Post-consumer Recycled Content | 0%             |
| Manufacturing Location         | Greenville, IL |
| Solar Reflectance Index (SRI)  | N/A            |