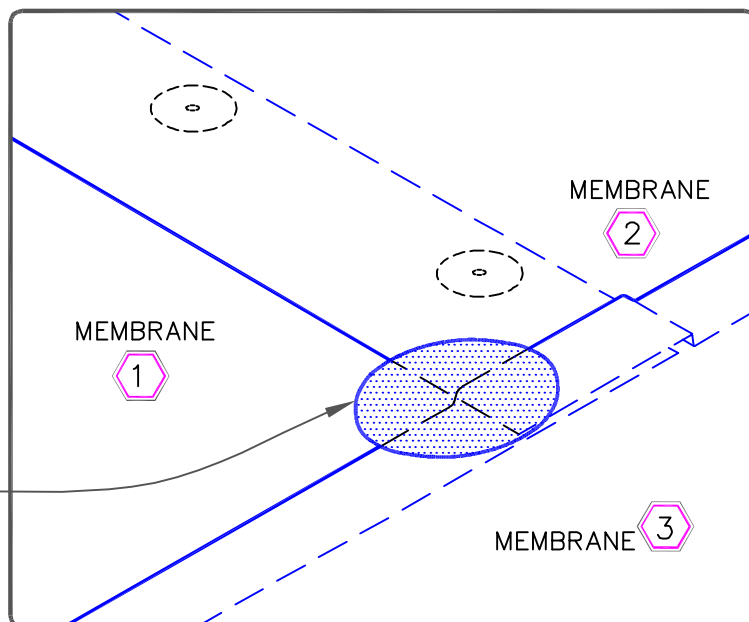
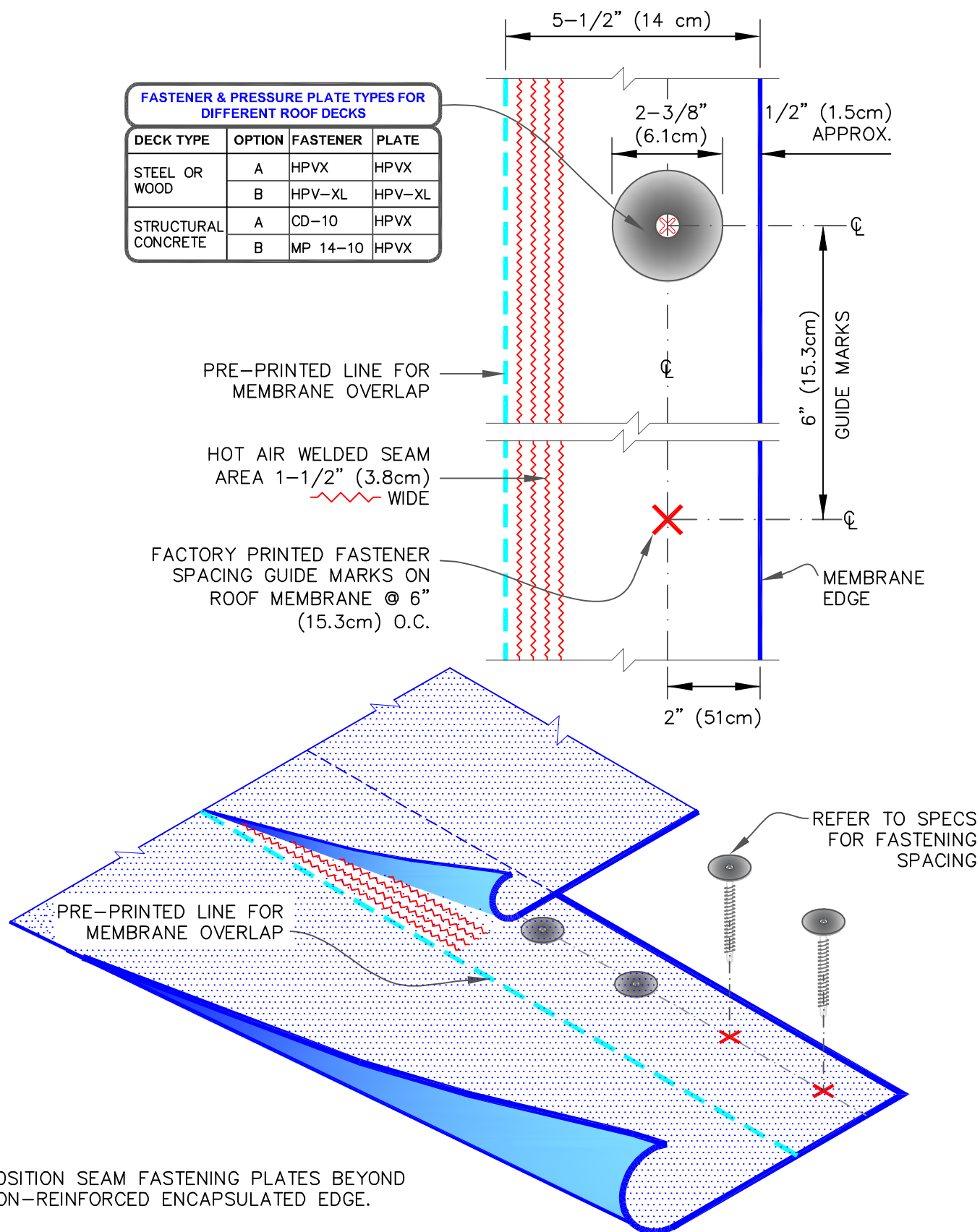


NOTES:

1. POSITION SEAM FASTENING PLATES BEYOND NON-REINFORCED ENCAPSULATED EDGE.
2. APPROXIMATELY 1/8" (0.5cm) DIAMETER BEAD OF CUT-EDGE SEALANT IS REQUIRED ON CUT EDGES OF REINFORCED TPO MEMBRANE.

WHEN USING 60 OR 80-MIL (1.52/2.03mm) THICK MEMBRANE
 APPLY A 4-1/2" (11.8cm) DIAMETER "T-JOINT" COVER AT FIELD SPLICE INTERSECTIONS, CENTRALLY ALIGNED.





NOTE:

1. POSITION SEAM FASTENING PLATES BEYOND NON-REINFORCED ENCAPSULATED EDGE.