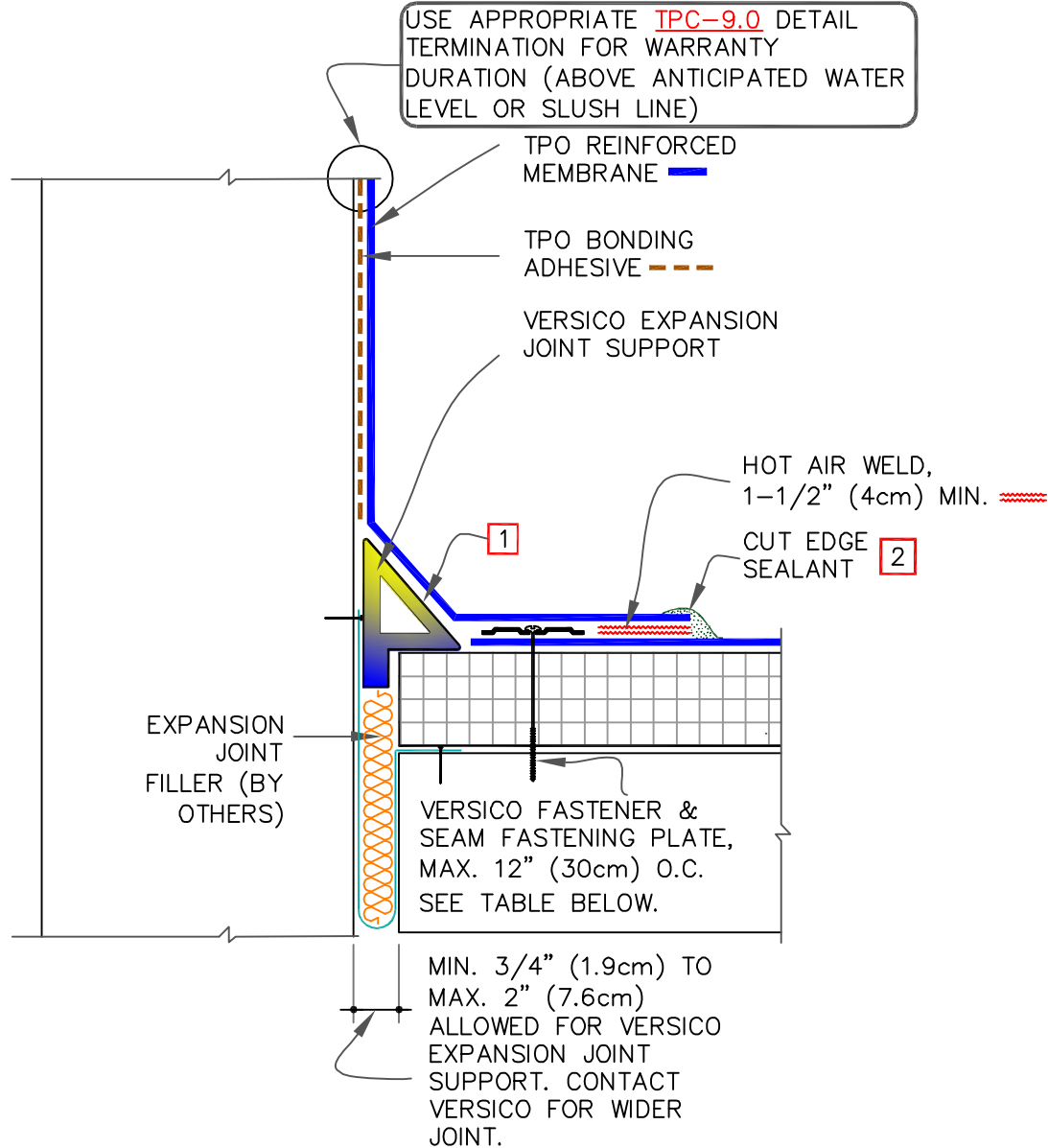


CAUTION

WHEN A WARRANTY WIND SPEED GREATER THAN 90MPH IS SPECIFIED, VERSICO FASTENER AND SEAM FASTENING PLATE SPACING SHALL NOT EXCEED 6" (15cm) ON CENTER FOR ADHERED MEMBRANE ASSEMBLIES.



NOTES:

- MEMBRANE FLASHING SHALL NOT BE ADHERED OVER THE EXPANSION JOINT SUPPORT OR SPONGE TUBING.
- APPROXIMATELY 1/8" (0.5cm) DIAMETER BEAD OF CUT-EDGE SEALANT IS REQUIRED ON CUT EDGES OF REINFORCED TPO MEMBRANE. PLATES.

FASTENER & PRESSURE PLATE TYPES FOR DIFFERENT ROOF DECKS

DECK TYPE	OPTION	FASTENER	PLATE
STEEL OR WOOD	A	HPVX	HPVX
	B	HPV-XL	HPV-XL
STRUCTURAL CONCRETE	A	CD-10	HPVX
	B	MP 14-10	HPVX



DECK-TO-WALL EXPANSION JOINT

MAXIMUM WARRANTY: 30 YEARS

— TPO MEMBRANE
— APPROVED SUBSTRATE
0 — SEE NOTE

PS (PRESSURE SENSITIVE)
P&S (PEEL & STICK)
QA (QUICK APPLIED)

THERMOPLASTIC ROOFING SYSTEM

TPC-3.2