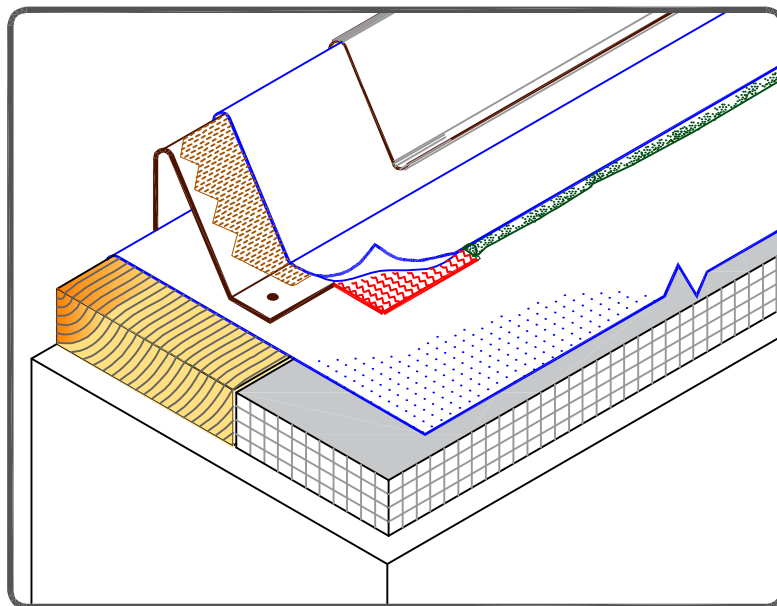
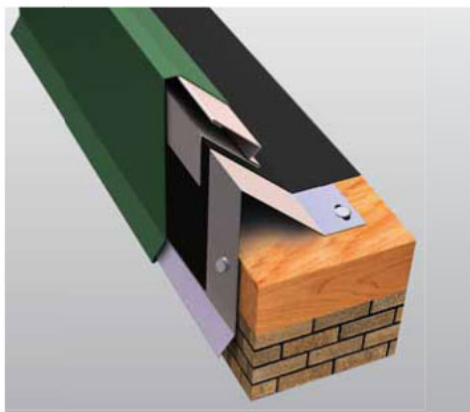


## NOTES:

1. REFER TO [SecurEdge 200 INSTRUCTION MANUAL](#) FOR STEP-BY-STEP INSTALLATION PROCEDURES.
2. WHEN METAL FASCIA BY OTHERS IS USED, FASTENER TYPE AND FASTENING FREQUENCY SHALL BE RECOMMENDED BY METAL EDGE MANUFACTURER.

## SECUREDGE 200



CARLISLE SecurEdge 200

MAXIMUM WARRANTY: 30 YEARS



DETAIL NO.

U-1D