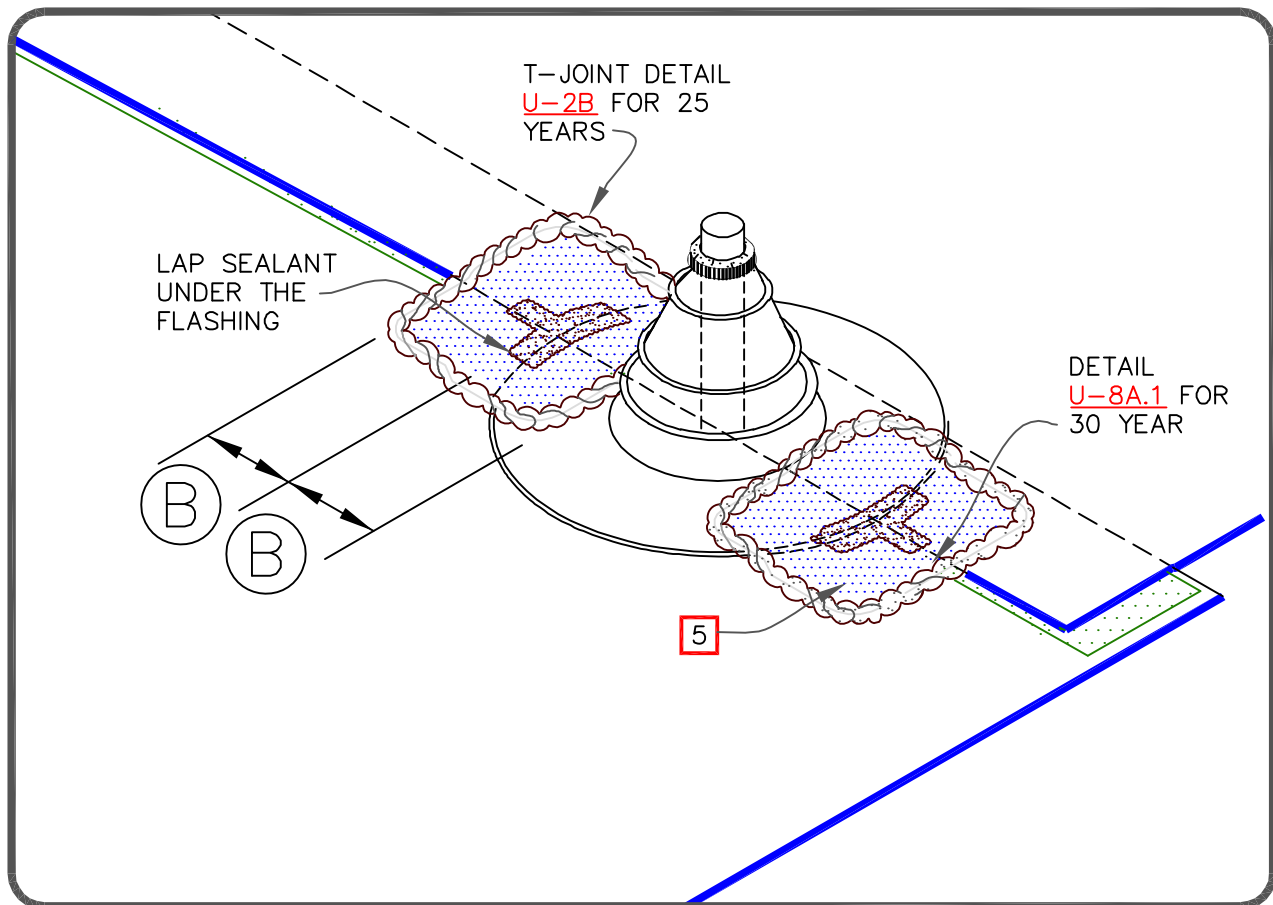
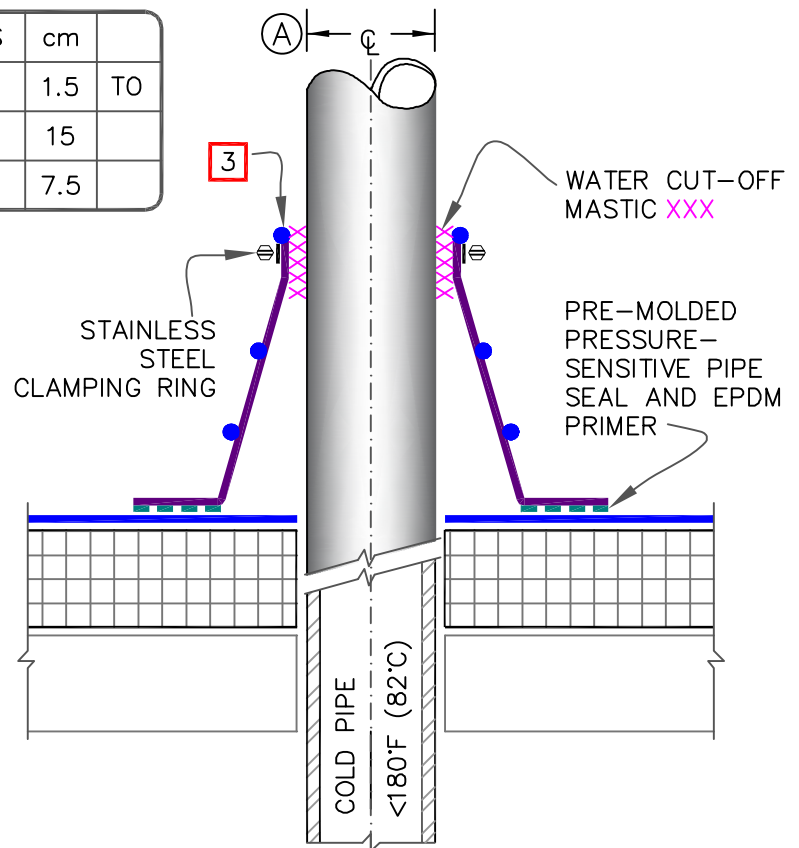


## NOTES:

1. REMOVE ALL LEAD AND OTHER FLASHING BEFORE INSTALLING PRESSURE-SENSITIVE PIPE SEAL.
2. TEMPERATURE OF PIPE PENETRATION MUST NOT EXCEED 180°F (82°C).
3. PRE-MOLDED PIPE FLASHING MUST HAVE RIB INTACT AT THE TOP EDGE REGARDLESS OF PIPE DIAMETER.
4. DECK FLANGES OF THE PRESSURE-SENSITIVE PIPE SEAL SHALL NOT BE OVERLAPPED, CUT OR APPLIED OVER ANY ANGLE CHANGE.
5. USE DETAIL [U-8A.1](#) WHEN PIPE BOOT INTERSECTS A SPLICE ON 30-YEAR WARRANTY.
6. ON MECHANICALLY-FASTENED ROOFING SYSTEMS, REFER TO [DETAIL MF-8A](#).

DIMENSIONS		cm	
(A)	1/2"	1.5	TO
	6"	15	
(B)	3"	7.5	



PRESSURE-SENSITIVE PIPE SEAL

MAXIMUM WARRANTY: 30 YEARS



DETAIL NO.

U-8A

U (UNIVERSAL DETAIL)