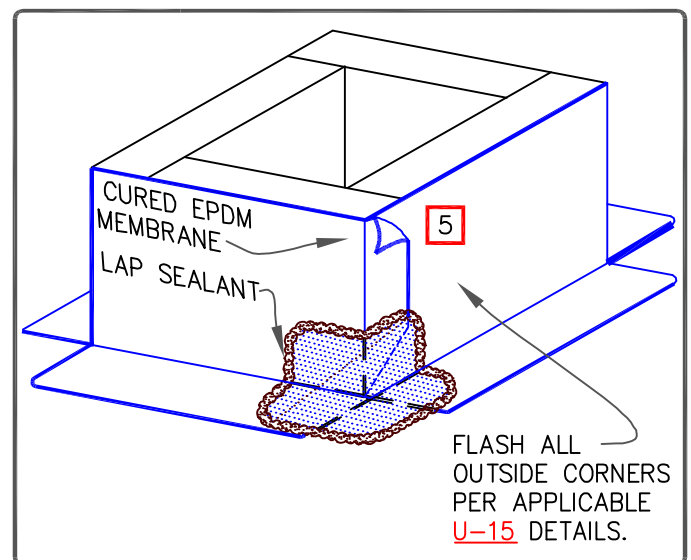


## NOTES:

1. IN CASE THE THREADED FASTENERS ARE USED TO PENETRATE THE METAL COUNTER-FLASHING, USE EPDM WASHERS, APPLY WATER CUT-OFF MASTIC UNDER THE COUNTER-FLASHING OR SEAL THE FASTENER HEADS WITH SEALANT.
2. LAP SEALANT IS REQUIRED ON CUT-EDGES OF REINFORCED MEMBRANE.
3. SEAM PLATES AND FASTENERS MAY BE INSTALLED INTO THE STRUCTURAL DECK AND THEN HP FASTENERS AND POLYMER SEAM PLATES ARE REQUIRED FOR MECHANICALLY-FASTENED ROOFING SYSTEMS OVER STEEL DECKS.
4. MEMBRANE SPLICES SHALL INCORPORATE 3" (7.6cm) WIDE SecurTAPE FOR PROJECTS WITH 25-YEAR AND 6" (15.2cm) FOR 30-YEAR WARRANTIES.
5. IF THE VERTICAL SPLICE ON THE CURB FLASHING IS NOT LOCATED AT THE CORNER, USE DETAIL [U-2C](#) FOR EPDM MEMBRANE SPLICES AT ANGLE CHANGES.



CURB FLASHING – EPDM MEMBRANE

MAXIMUM WARRANTY: 30 YEARS



DETAIL NO.

U-5A

U (UNIVERSAL DETAIL)