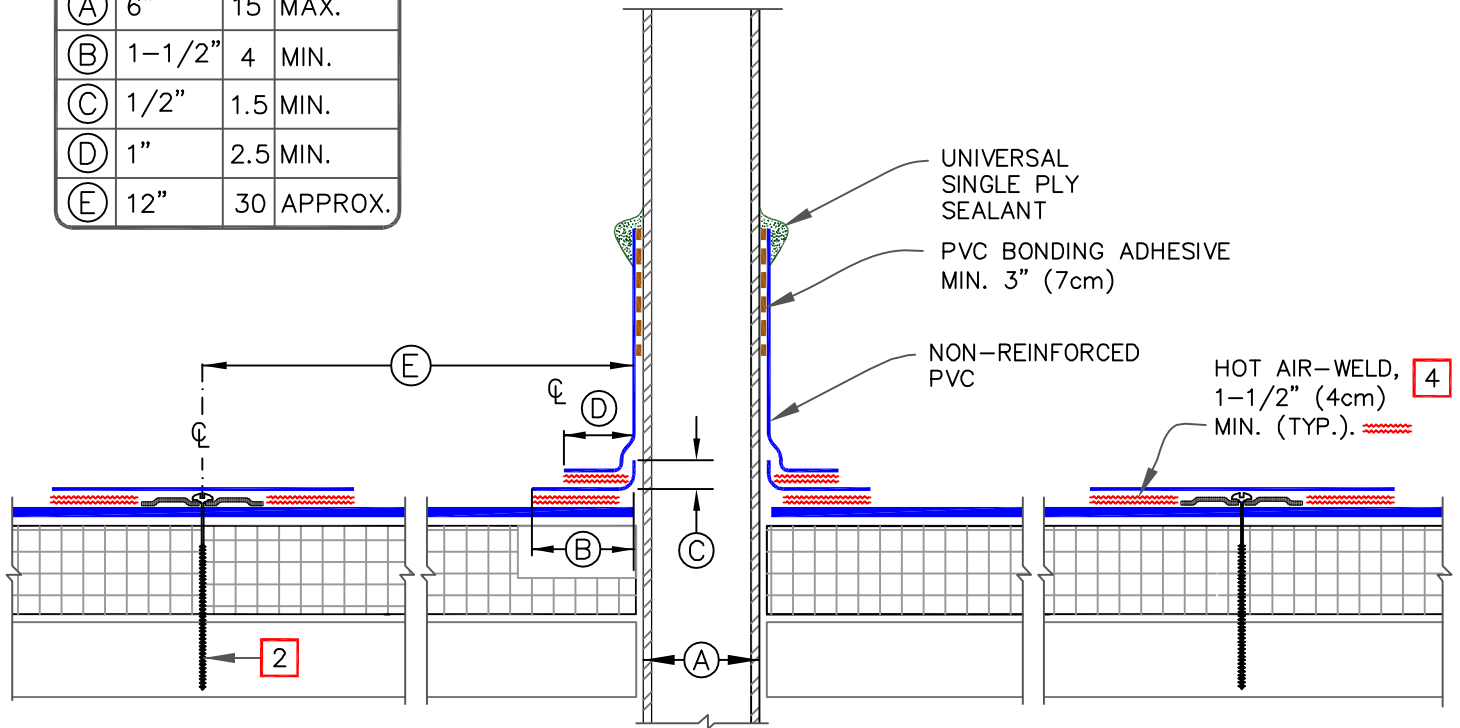


DIMENSIONS	cm	
(A) 6"	15	MAX.
(B) 1-1/2"	4	MIN.
(C) 1/2"	1.5	MIN.
(D) 1"	2.5	MIN.
(E) 12"	30	APPROX.

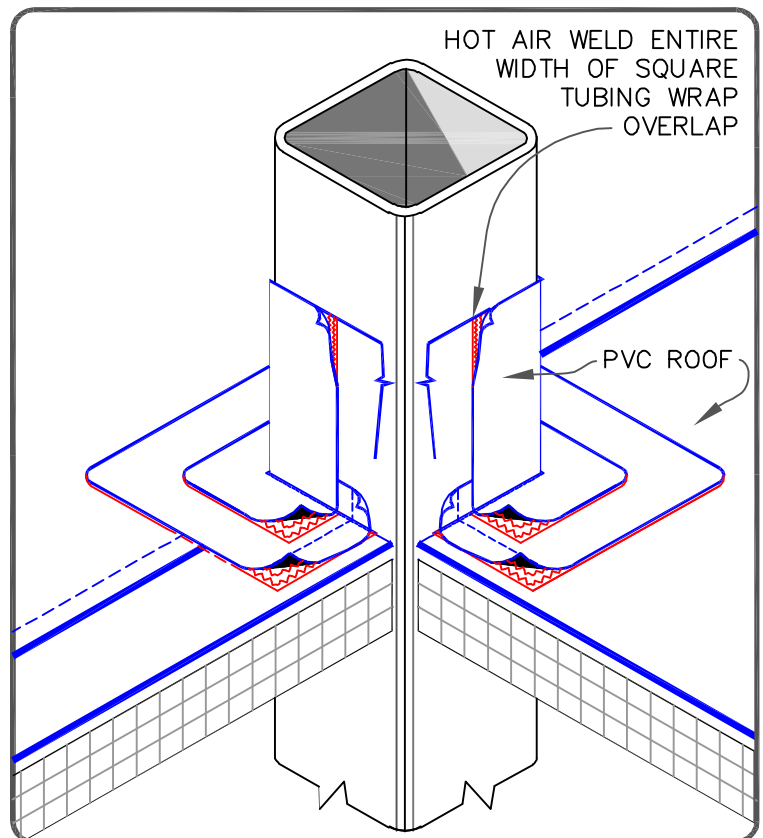


FASTENER TYPES ON MECHANICALLY ATTACHED ROOF ASSEMBLY

DECK TYPE	OPTION	FASTENER	PLATE
STEEL OR WOOD	A	HPVX	HPVX
	B	HPV-XL	HPV-XL
STRUCTURAL CONCRETE	A	CD-10	HPVX
	B	MP 14-10	HPVX

NOTES:

1. REMOVE ALL EXISTING LEAD AND FLASHING MATERIAL BEFORE INSTALLING PRE-FABRICATED SQUARE TUBE WRAP.
2. VERSICO FASTENERS & SEAM FASTENING PLATES FOR MECHANICALLY FASTENED SYSTEM (NOT REQUIRED ON ADHERED SYSTEM). SEE TABLE ABOVE.



FIELD-FABRICATED SQUARE TUBE FLASHING

MAXIMUM WARRANTY: 20 YEARS

— PVC/PVC KEE MEMBRANE

— APPROVED SUBSTRATE

0 — SEE NOTE

PS (PRESSURE SENSITIVE)

TPC (Thermoplastic Common Details)

TPC-8.4