

CARLISLE

SYNTEC SYSTEMS



Setting the Standard for Excellence

Carlisle SynTec Systems, the flagship division of Carlisle Construction Materials (CCM), is the largest supplier of commercial roofing products in the world.

Carlisle produces high-performance EPDM, TPO, PVC, and FleeceBACK® single-ply roofing membranes, a full line of polyiso and expanded polystyrene insulation, and a wide variety of solvent-based and low-VOC adhesives.

With more than 60 years of manufacturing experience and billions of square feet of roofing materials sold, Carlisle continues to lead the industry by providing the best products, services, and warranty options available today.

Product Reference Guide

TABLE OF CONTENTS

| | |
|--|----|
| EPDM Accessories | 1 |
| Thermoplastic Accessories | 3 |
| Fasteners & Plates | 9 |
| Adhesives, Primers, and Sealants | 13 |
| Air & Vapor Barriers..... | 19 |
| Edge Metal | 20 |
| Insulation Reference..... | 21 |
| EPDM Systems Reference | 24 |
| TPO Systems Reference | 26 |
| PVC Systems Reference | 28 |

Disclaimer: All product information in this guide is subject to change without notice. While Carlisle makes every effort to provide the most accurate, up-to-date information, occasionally, one or more items in our guide may be mislabeled. For the most up-to-date version, please visit the Carlisle website at www.carlisle syntec.com.

EPDM Accessories

Pressure-Sensitive Curb Flashing

Cured Sure-Seal EPDM membrane pre-cut to 20" wide with 6" PS SecurTAPE already applied. This product provides an efficient way to flash curbs and short walls.

Sizes Available:

20" x 50' – Product Number: 308705 – Black

Quantity Per Box: 1 roll



Pressure-Sensitive Cured Cover Strip

Cured Sure-Seal or Sure-White EPDM membrane laminated to a synthetic rubber adhesive makes this product the optimal solution to overlay seam fastening plates, strip in seams and metal edgings, or make roof repairs.

Sizes Available:

6" x 100' – Product Number: 308701 – Black

6" x 100' – Product Number: 308910 – White

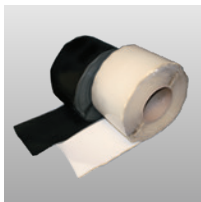
9" x 100' – Product Number: 308839 – Black

9" x 100' – Product Number: 309121 – White

12" x 50' – Product Number: 317598 – Black

12" x 50' – Product Number: 317596 – White

Quantity Per Box: 2 rolls (6"), 1 roll (9" and 12")



20" Pressure-Sensitive Cured Flashing

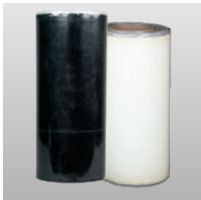
Sure-Seal/Sure-White EPDM 20" Pressure-Sensitive (PS) Cured Flashing is pre-cut with factory-applied SecurTAPE and is the most efficient, labor-saving way to flash a curb. Production time on projects with numerous curbs or wall flashings can be reduced with this productivity-boosting accessory.

Sizes Available:

20" x 50' – Product Number: 329385 – Black

20" x 50' – Product Number: 330913 – White

Quantity Per Box: 1 roll



Pressure-Sensitive Elastoform Flashing®

Uncured Sure-Seal or Sure-White EPDM laminated to synthetic rubber adhesive. Pressure-Sensitive Elastoform Flashing can be used to flash corners, pipes, and other penetrations.

Sizes Available:

6" x 100' – Product Number: 310433 – Black

6" x 100' – Product Number: 310434 – White

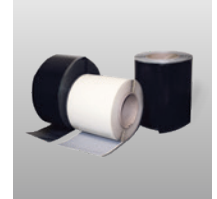
9" x 50' – Product Number: 303162 – Black

9" x 50' – Product Number: 309950 – White

12" x 50' – Product Number: 305723 – Black

12" x 50' – Product Number: 309951 – White

Quantity Per Box: 2 rolls (6"), 1 roll (9" and 12")



Pressure-Sensitive Inside/Outside Corners

Uncured Sure-Seal or Sure-White EPDM laminated to a synthetic rubber adhesive. The pre-cut corners greatly reduce installation time and can be used for inside and outside corner installations.

Sizes Available:

7" x 9" – Product Number: 300199 – Black

7" x 9" – Product Number: 310310 – White

Quantity Per Box: 20



Pressure-Sensitive Pipe Seals

Cured Sure-Seal/Sure-White EPDM with a synthetic rubber adhesive. PS Pipe Seals increase the speed and ease of installation.

Sizes Available:

½" – 3" – Product Number: 300204 – Black

1" – 6" – Product Number: 309750 – Black

1" – 6" – Product Number: 316593 – White

Quantity Per Box: 10

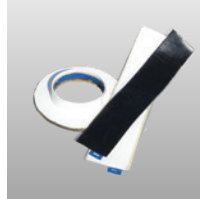


Pressure-Sensitive Pourable Sealer Pockets

Uncured Sure-Seal/Sure-White EPDM Flashing with a synthetic rubber adhesive and a 2" support strip pre-applied to the flashing. Sizes can be combined to form larger pockets when required.

Sizes Available:

- 4" diameter – Product Number: 300208 – Black
 - 6" diameter – Product Number: 300209 – Black
 - 6" diameter – Product Number: 316243 – White
 - 8" diameter – Product Number: 300210 – Black
 - 8" diameter – Product Number: 332890 – White
- Quantity Per Box:** 12

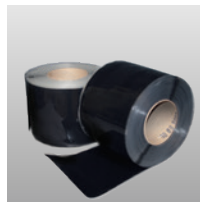


Pressure-Sensitive Overlayment Strip

Semi-cured Sure-Seal EPDM laminated to a synthetic rubber adhesive. It is designed for stripping in drip edges, all types of metal edging and Carlisle seams, and all fastening plates.

Sizes Available:

- 6" x 100' – Product Number: 302319 – Black
 - 9" x 100' – Product Number: 302281 – Black
 - 12" x 50' – Product Number: 317600 – Black
- Quantity Per Box:** 2 rolls (6"), 1 roll (9"), 1 roll (12")

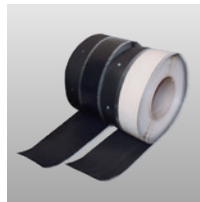


Pressure-Sensitive RUSS

Reinforced Universal Securement Strip (RUSS) combines reinforced Sure-Seal/Sure-White EPDM with 3"-wide Pressure-Sensitive SecurTAPE for additional membrane securement at the perimeter and penetrations.

Sizes Available:

- 6" RUSS – Product Number: 300490 – Black
 - 6" RUSS – Product Number: 309268 – White
- Use with all EPDM Systems*
- 9" RUSS – Product Number: 300489
- Use with Mechanically Fastened EPDM Systems*
- Quantity Per Box:** 2 rolls (6"), 1 roll (9")

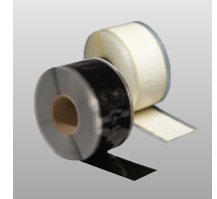


Pressure-Sensitive SecurTAPE™

Fully cured synthetic rubber product used for splicing cured Sure-Seal/Sure-White EPDM membrane in ballasted, adhered and mechanically fastened roofing systems.

Sizes Available:

- 3" x 100' – Product Number: 300465 – Black
 - 3" x 100' – Product Number: 303260 – White
 - 6" x 100' – Product Number: 302952 – Black
 - 6" x 100' – Product Number: 317501 – White
- Quantity Per Box:** 4 rolls (3"), 2 rolls (6")



Pressure-Sensitive T-Joint Covers

Semi-cured EPDM laminated to a synthetic rubber adhesive. Used to seal field splice intersections and horizontal-to-vertical transitions of field splices. 12" x 12" T-Joint Covers are available for 30-Year Warranty Systems.

Sizes Available:

- 6" x 6" – Product Number: 303100 – Black
 - 6" x 6" – Product Number: 332871 – White
 - 12" x 12" – Product Number: 305089 – Black
- Quantity Per Box:** 20

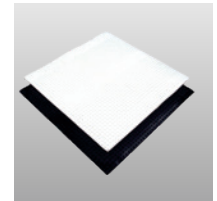


Pressure-Sensitive Walkway Pads

Cured Sure-Seal/Sure-White EPDM with a synthetic rubber adhesive. Pressure-Sensitive Walkway Pads are designed to protect the Carlisle EPDM membrane in areas exposed to repetitive foot traffic.

Sizes Available:

- 30" x 30" – Product Number: 300829 – Black
 - 30" x 30" – Product Number: 309589 – White
- Quantity Per Pallet:** 50

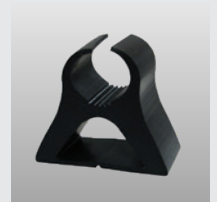


Pipe Supports

An extruded EPDM product used to support steel pipe, electrical conduit, PVC pipe, and copper tubing on Carlisle's EPDM, TPO, and PVC roofing systems.

Sizes Available:

- Mini: ½" - 1½" – Product Number: 309403
 - Small: ¾" - 2" – Product Number: 309402
 - Large: 2½" - 5" – Product Number: 309404
- Quantity Per Box:** 20 (Mini and Small), 10 (Large)

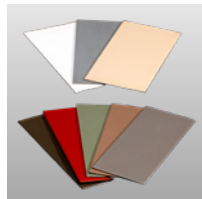


Thermoplastic Accessories



Coated Metal

24-gauge (0.6 mm) galvanized steel sheets coated with a layer of .035" non-reinforced flashing. Membrane may be welded directly to the coated metal. The sheet is cut to the appropriate width and used to fabricate metal drip edges or other roof perimeter edging profiles.



TPO

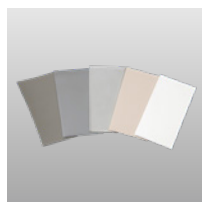
Sizes Available:

- 5 Pcs/Pallet – 4' x 10' – Product Number: 332916 – Medium Bronze Coated Metal
- 5 Pcs/Pallet – 4' x 10' – Product Number: 332913 – Rock Brown Coated Metal
- 5 Pcs/Pallet – 4' x 10' – Product Number: 332915 – Terra Cotta Coated Metal
- 5 Pcs/Pallet – 4' x 10' – Product Number: 332914 – Slate Gray Coated Metal
- 5 Pcs/Pallet – 4' x 10' – Product Number: 332912 – Patina Green Coated Metal
- 10 Pcs/Pallet – 4' x 10' – Product Number: 309272 – White
- 10 Pcs/Pallet – 4' x 10' – Product Number: 309273 – Gray
- 10 Pcs/Pallet – 4' x 10' – Product Number: 309274 – Tan
- 25 Pcs/Pallet – 4' x 10' – Product Number: 303181 – White
- 25 Pcs/Pallet – 4' x 10' – Product Number: 303183 – Gray
- 25 Pcs/Pallet – 4' x 10' – Product Number: 303182 – Tan

PVC

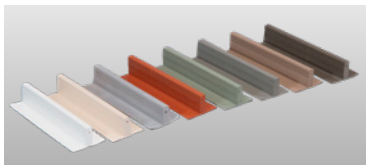
Sizes Available:

- 10 Pcs/Pallet – 4' x 10' – Product Number: 307708 – White
- 10 Pcs/Pallet – 4' x 10' – Product Number: 307709 – Gray
- 10 Pcs/Pallet – 4' x 10' – Product Number: 307710 – Tan
- 10 Pcs/Pallet – 4' x 10' – Product Number: 334438 – Light Gray
- 10 Pcs/Pallet – 4' x 10' – Product Number: 335822 – Slate Gray



Contour Rib™

This profile is extruded from the same weather-resistant TPO or PVC compound as the membrane. The Contour Rib Profile is secured to the TPO or PVC roofing membrane to simulate a standing seam metal roofing system. The physical dimensional stability of the profile is enhanced with fiberglass and the rectangular profile provides exceptional shadow lines for aesthetic appeal.



TPO

Sizes Available:

- 10' – Product Number: 324574 – White
- 10' – Product Number: 324572 – Gray
- 10' – Product Number: 324573 – Tan
- 10' – Product Number: 333064 – Medium Bronze
- 10' – Product Number: 330830 – Rock Brown
- 10' – Product Number: 330797 – Terra Cotta
- 10' – Product Number: 330799 – Slate Gray
- 10' – Product Number: 330798 – Patina Green

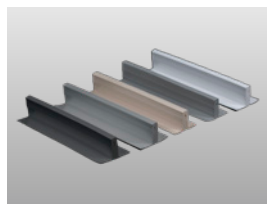
Quantity Per Box: 20

PVC

Sizes Available:

- 10' – Product Number: 321909 – White
- 10' – Product Number: 321911 – Gray
- 10' – Product Number: 321910 – Tan
- 10' – Product Number: 334439 – Light Gray
- 10' – Product Number: 335823 – Slate Gray

Quantity Per Box: 20



Inside/Outside Corners

Pre-molded corners, used for flashing inside and outside corners on a variety of details.

TPO

Sizes Available: One Size

- Product Number: 300020 – Gray – Outside
- Product Number: 300025 – Tan – Outside
- Product Number: 300016 – White – Outside
- Product Number: 307406 – White – Inside
- Product Number: 307407 – Tan – Inside
- Product Number: 307408 – Gray – Inside

Quantity Per Bag: 12

PVC

Sizes Available: One Size

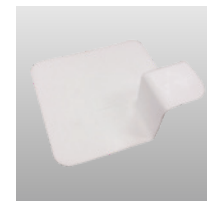
- Product Number: 329286 – White/Gray – Outside
- Product Number: 329284 – White/Gray – Inside
- Product Number: 329287 – White/Tan – Outside
- Product Number: 329285 – White/Tan – Inside

Quantity Per Bag: 12



Universal Corners

Pre-molded corners, used for flashing outside or inside corners on new construction installations where right-angled conditions are more common. Installation is fast and easy with no stretching required.



TPO

Sizes Available: One Size

- Product Number: 318070 – White
- Product Number: 327601 – Gray
- Product Number: 327602 – Tan

Quantity Per Box: 20

PVC

Sizes Available: One Size

- Product Number: 318071 – White
- Product Number: 329288 – Gray
- Product Number: 329289 – Tan

Quantity Per Box: 20

T-Joint Covers

Injection-molded non-reinforced flashings used to seal T-Joint splice intersections.

TPO

Sizes Available:

- 4½" diameter – Product Number: 307476 – White
- 4½" diameter – Product Number: 307478 – Gray
- 4½" diameter – Product Number: 307477 – Tan

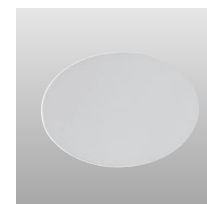
Quantity Per Box: 100

PVC

Sizes Available:

- 4½" diameter – Product Number: 308224 – White
- 4½" diameter – Product Number: 309494 – Gray
- 4½" diameter – Product Number: 309847 – Tan

Quantity Per Box: 100



Curb Wrap Corners

Prefabricated flashings made of 60-mil reinforced Sure-Weld detail membrane designed to reduce curb flashing time. Each corner has a 6"-wide base flange and a 12" overall height. One curb will require 4 corners. Other sizes and colors available through special orders. Available in 1- or 2-piece wraps.

TPO

Sizes Available:

7" Wrap for 12" Curb – Product Number: 305062 – White
13" Wrap for 24" Curb – Product Number: 305063 – White
19" Wrap for 36" Curb – Product Number: 305064 – White

Quantity Per Box: 12 pieces or 3 complete curbs

PVC

Sizes Available:

7" Wrap for 12" Curb – Product Number: 322973 – White
7" Wrap for 12" Curb – Product Number: 322970 – Gray
7" Wrap for 12" Curb – Product Number: 322977 – Tan
13" Wrap for 24" Curb – Product Number: 322975 – White
13" Wrap for 24" Curb – Product Number: 322971 – Gray
13" Wrap for 24" Curb – Product Number: 322978 – Tan
19" Wrap for 36" Curb – Product Number: 322976 – White
19" Wrap for 36" Curb – Product Number: 322972 – Gray
19" Wrap for 36" Curb – Product Number: 322979 – Tan

Quantity Per Box: 12 pieces or 3 complete curbs



Crossgrip Walkway

PVC and TPO Crossgrip Walkway is an open grid walkway used to protect the membranes from regular foot traffic and other hazards.

TPO

Sizes Available:

3' x 33' – Product Number: 332633 – White
3' x 33' – Product Number: 332634 – Gray
3' x 33' – Product Number: 341122 – Yellow

Packaged Individually

PVC

Sizes Available:

3' x 33' – Product Number: 332475 – White
3' x 33' – Product Number: 332474 – Gray
3' x 33' – Product Number: 340355 – Yellow

Packaged Individually



Walkway Rolls

Heat-weldable walkway rolls designed to protect Carlisle's TPO and PVC membranes in areas exposed to repetitive foot traffic and other hazards.

TPO

Sizes Available:

34" x 50' – Product Number: 310508 – White
34" x 50' – Product Number: 310509 – Gray
34" x 50' – Product Number: 310510 – Tan

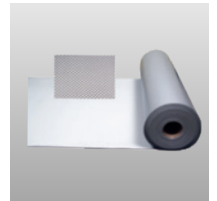
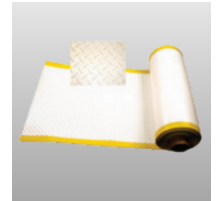
Packaged Individually

PVC

Sizes Available:

36" x 60' – Product Number: 336712 – Gray

Packaged Individually



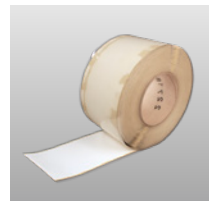
PVC Pressure-Sensitive Cover Strip

Non-reinforced KEE HP flashing laminated to a nominal 35-mil, fully cured, pressure-sensitive, synthetic rubber for use on PVC/KEE HP utilizing Step 1 Activator and Step 2 Primer for installation..

Sizes Available:

6" x 100' – Product Number: 332616 – White
6" x 100' – Product Number: 332617 – Gray
6" x 100' – Product Number: 332618 – Tan

Quantity Per Box: 2 rolls



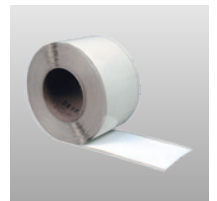
TPO Pressure Sensitive Cover Strip

Non-reinforced TPO laminated to a nominal 30-mil, pressure-sensitive tape used for stripping in flat metal flanges such as drip edge or gravel stop.

Sizes Available:

6" x 100' – Product Number: 303102 – White
6" x 100' – Product Number: 303103 – Gray
6" x 100' – Product Number: 303104 – Tan

Quantity Per Box: 2 rolls



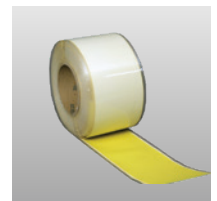
Yellow PS Warning Strip

Non-reinforced yellow TPO coverstrip can be used on TPO, EPDM, or PVC with the corresponding membrane primer (and activator for PVC) to indicate roof edges and other hazards.

Sizes Available:

6" x 100' – Product Number: 325721

Quantity Per Box: 2 rolls



Thermoplastic Accessories



Reinforced Coverstrip

Carlisle's Reinforced Coverstrip is an 8" (20.3 cm)-wide, nominal 60-mil (1.52 mm) and 80-mil (2.03 mm)-thick flashing that contains a polyester reinforcing fabric. Reinforced Coverstrip is used for stripping in rows of fasteners and plates, stripping in coated edge metal, and covering the butt joints of Carlisle PVC and KEE HP FleeceBACK membranes.

PVC

Sizes Available:

8" x 75' – Product Number: 325168 – White (80-mil)
8" x 75' – Product Number: 325169 – Gray (80-mil)
8" x 75' – Product Number: 326121 – Tan (80-mil)

Quantity Per Box: 1 roll (80-mil)

KEE HP

Sizes Available:

8" x 75' – Product Number: 325165 – White (80-mil)
8" x 75' – Product Number: 325167 – Gray (80-mil)
8" x 75' – Product Number: 326120 – Tan (80-mil)
8" x 100' – Product Number: 325981 – White (60-mil)

Quantity Per Box: 2 rolls (60-mil), 1 roll (80-mil)



PVC



KEE HP

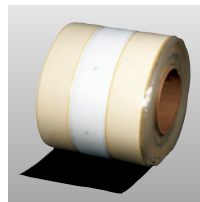
TPO Pressure-Sensitive RUSS

Available in 10" RUSS (shown) and used in place of narrow-width sheets to secure membrane in the perimeter of the roof on mechanically fastened systems. 6" RUSS is also available and is used to secure membrane at the base of vertical walls for additional membrane securement without penetrating the sheet.

Sizes Available:

6" x 100' – Product Number: 303373
10" x 100' – Product Number: 305442

Quantity Per Box: 1 roll (10"), 2 rolls (6")



Non-Reinforced Flashing

Non-reinforced thermoplastic membrane used to field-fabricate pipe flashings and scuppers when the use of a pre-molded accessory is not feasible.

TPO

Sizes Available:

12" x 50' – Product Number: 300473 – White
12" x 50' – Product Number: 300479 – Gray
12" x 50' – Product Number: 300476 – Tan
24" x 50' – Product Number: 300474 – White
24" x 50' – Product Number: 300480 – Gray
24" x 50' – Product Number: 300477 – Tan
24" x 50' – Product Number: 332963 – Medium Bronze
24" x 50' – Product Number: 328056 – Rock Brown
24" x 50' – Product Number: 328047 – Terra Cotta
24" x 50' – Product Number: 328053 – Slate Gray
24" x 50' – Product Number: 328050 – Patina Green

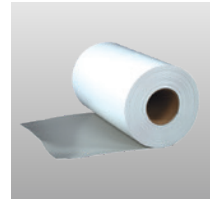
Quantity Per Box: 1 roll

PVC / KEE HP

Sizes Available:

12" x 50' – Product Number: 327840 – White/Gray
12" x 50' – Product Number: 327842 – White/Tan
24" x 50' – Product Number: 327841 – White/Gray
24" x 50' – Product Number: 327843 – White/Tan
24" x 50' – Product Number: 334437 – Light Gray
24" x 50' – Product Number: 335821 – Slate Gray

Quantity Per Box: 1 roll



Reinforced Overlayment

Pre-slit reinforced membrane used to overlay fasteners, plates, and end laps on FleeceBACK® and Self-Adhering Technology (SAT™) membranes.

TPO

Sizes Available:

45-mil

6" x 100' – Product Number: 300485 – White
6" x 100' – Product Number: 300486 – Gray
6" x 100' – Product Number: 302811 – Tan

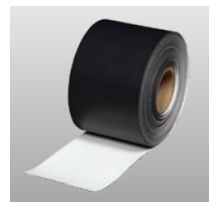
60-mil

6" x 100' – Product Number: 325005 – White
6" x 100' – Product Number: 325003 – Gray
6" x 100' – Product Number: 325004 – Tan
9" x 50' – Product Number: 310419 – White
9" x 50' – Product Number: 310417 – Gray
9" x 50' – Product Number: 310418 – Tan

80-mil

9" x 50' – Product Number: 318404 – White

Quantity Per Box: 3 rolls (6"), 2 rolls (9")



Molded Sealant Pockets

Interlocking, two-piece, injection-molded, weldable pockets used to waterproof pipe clusters or other oddly shaped penetrations.

TPO

Sizes Available:

6" wide x 2" high

Can be adjusted from 7½" to 11½" in length

Product Number: 316539 – White

Product Number: 316540 – Gray

Product Number: 316541 – Tan

Quantity Per Box: 5 complete pockets

PVC

Sizes Available:

6" wide x 2" high

Can be adjusted from 7½" to 11½" in length

Product Number: 316542 – White

Quantity Per Box: 5 complete pockets



Split Pipe Seals

Prefabricated flashings made of 60-mil reinforced Sure-Weld detail membrane and Sure-Flex membrane used for flashing pipes with obstructions that prevent the use of a molded pipe seal. Other sizes and colors available via special order.

TPO

Sizes Available:

1" – Product Number: 303504 – White

1" – Product Number: 307654 – Gray

1" – Product Number: 307648 – Tan

2" – Product Number: 303505 – White

2" – Product Number: 307655 – Gray

2" – Product Number: 307649 – Tan

3" – Product Number: 303506 – White

3" – Product Number: 307656 – Gray

3" – Product Number: 307650 – Tan

4" – Product Number: 303507 – White

4" – Product Number: 307657 – Gray

4" – Product Number: 307651 – Tan

5" – Product Number: 303508 – White

5" – Product Number: 307658 – Gray

5" – Product Number: 307652 – Tan

6" – Product Number: 303509 – White

6" – Product Number: 307659 – Gray

6" – Product Number: 307653 – Tan

Quantity Per Box: 8

PVC

Sizes Available:

1" – Product Number: 307724 – White

1" – Product Number: 307725 – Gray

1" – Product Number: 307726 – Tan

2" – Product Number: 307727 – White

2" – Product Number: 307728 – Gray

2" – Product Number: 307729 – Tan

3" – Product Number: 307730 – White

3" – Product Number: 307731 – Gray

3" – Product Number: 307732 – Tan

4" – Product Number: 307733 – White

4" – Product Number: 307734 – Gray

4" – Product Number: 307735 – Tan

5" – Product Number: 307736 – White

5" – Product Number: 307737 – Gray

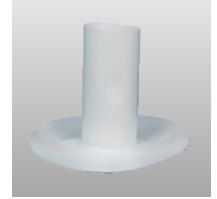
5" – Product Number: 307738 – Tan

6" – Product Number: 307739 – White

6" – Product Number: 307740 – Gray

6" – Product Number: 307741 – Tan

Quantity Per Box: 8



Thermoplastic Accessories



Molded Pipe Seals

Injection-molded, pre-formed pipe flashings for pipes ¾" to 8" diameter. Molded Pipe Seals provide a reliable method of waterproofing round pipe penetrations, as well as a substantial labor savings compared to field-fabrication.

TPO

Sizes Available:

¾"– 8" diameter – Product Number: 316534 – White

¾"– 8" diameter – Product Number: 316535 – Gray

¾"– 8" diameter – Product Number: 316536 – Tan

Quantity Per Box: 8

PVC

Sizes Available:

¾"– 8" diameter – Product Number: 316537 – White

¾"– 8" diameter – Product Number: 322959 – Gray

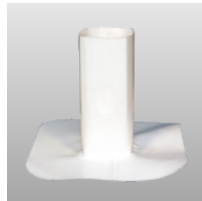
¾"– 8" diameter – Product Number: 323823 – Tan

Quantity Per Box: 8



Square Tubing Wraps

Fabricated using 60-mil reinforced Sure-Weld detail membrane and Sure-Flex membranes, square tubing wraps are designed to flash square metal tubing. A split and overlap tab allow the flashings to be opened and wrapped around a square penetration with an obstruction. Other sizes and colors available through special order.



TPO

Sizes Available:

3" x 3" – Product Number: 305576 – White

3" x 3" – Product Number: 307664 – Gray

3" x 3" – Product Number: 307660 – Tan

4" x 4" – Product Number: 305577 – White

4" x 4" – Product Number: 307665 – Gray

4" x 4" – Product Number: 307661 – Tan

5" x 5" – Product Number: 305578 – White

5" x 5" – Product Number: 307666 – Gray

5" x 5" – Product Number: 307662 – Tan

6" x 6" – Product Number: 305579 – White

6" x 6" – Product Number: 307667 – Gray

6" x 6" – Product Number: 307663 – Tan

Quantity Per Box: 8

PVC

Sizes Available:

3" x 3" – Product Number: 307742 – White

3" x 3" – Product Number: 307743 – Gray

3" x 3" – Product Number: 307744 – Tan

4" x 4" – Product Number: 307745 – White

4" x 4" – Product Number: 307746 – Gray

4" x 4" – Product Number: 307747 – Tan

6" x 6" – Product Number: 307748 – White

6" x 6" – Product Number: 307749 – Gray

6" x 6" – Product Number: 307750 – Tan

Quantity Per Box: 8

One- and Two-Way Pressure Relief Vents

Engineered to reduce moisture within the roofing system and release trapped air pressure within the building. One-Way Vents allow trapped air pressure to escape; Two-Way Vents (combined with One-Way Vents) help to reduce moisture.

Sizes Available:

8" x 11" – Product Number: 327975 – One-Way Pressure Relief Vent

8" x 11" – Product Number: 327976 – Two-Way Pressure Relief Vent

Quantity Per Box: 25 Pcs

TPO

Sizes Available:

9" x 12" – Product Number: 334849 – TPO One-Way Vent

9" x 12" – Product Number: 334480 – TPO Two-Way Vent

Quantity Per Box: 4 Pcs

PVC

Sizes Available:

9" x 12" – Product Number: 335592 – PVC One-Way Vent

9" x 12" – Product Number: 335593 – PVC Two-Way Vent

Quantity Per Box: 4 Pcs



Square Top Vents

Available in TPO and PVC versions, Square Top Vents are designed to allow air to flow freely through the vent while preventing water from infiltrating the roofing system.

TPO

Sizes Available:

8" – Product Number: 326867 – TPO Square Top Vent

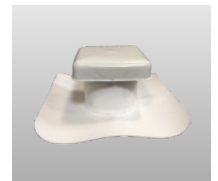
Quantity Per Box: 2 Pcs

PVC

Sizes Available:

8" – Product Number: 326867 – PVC Square Top Vent

Quantity Per Box: 2 Pcs



T-Top Vents

Available in TPO and PVC versions, T-Top Vents are designed to allow air to flow freely through the vent while preventing water from infiltrating the roofing system.

TPO

Sizes Available:

2 Pcs/Box – 4" – Product Number: 326896 – TPO T-Top Vent

2 Pcs/Box – 6" – Product Number: 326882 – TPO T-Top Vent

3 Pcs/Box – 8" – Product Number: 326883 – TPO T-Top Vent

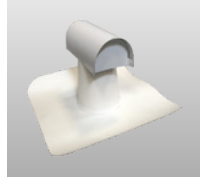
PVC

Sizes Available:

2 Pcs/Box – 4" – Product Number: 326868 – PVC T-Top Vent

2 Pcs/Box – 6" – Product Number: 326880 – PVC T-Top Vent

3 Pcs/Box – 8" – Product Number: 326881 – PVC T-Top Vent



APEEL Protective Film



Available on Sure-Weld 60-mil and 80-mil TPO and Sure-Flex 60-mil PVC and KEE HP membranes, APEEL Protective Film guards the membrane's surface from scuffs and dirt accumulation during installation, eliminating the need to clean the roof upon roof completion. Durable and easy to remove, APEEL Protective Film helps to save time and labor, improves aesthetics and long-term reflectivity.



APEEL Cover Tape

APEEL Cover Tape is a 6"-wide, 1,640'-long roll of APEEL Protective Film used to protect areas of membrane where APEEL Protective Film has been removed (around details) or was not factory applied (seams). APEEL Cover Tape allows applicators to keep 100 percent of the membrane surface clean during installation and is applied using the APEEL Cover Tape Applicator.



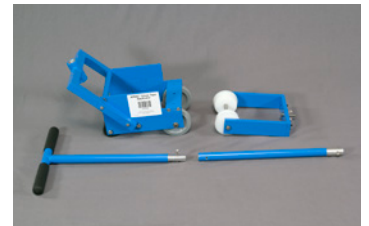
Sizes Available:

6" x 1,640' – Product Number: 333093

Quantity Per Box: 2 rolls/ctn

APEEL Cover Tape Applicator

The APEEL Cover Tape Applicator is made of heavy-duty powder-coated aluminum with stainless steel fasteners. It holds one roll of APEEL Cover Tape and uses size segmented pressure wheels to ensure proper adhesion.



Product Code: 333095

Fasteners & Plates

- Sure-Seal, Sure-White, and Sure-Tough EPDM
- Sure-Weld TPO
- Sure-Flex PVC

AccuTrac Plate (Insulation)



AccuTrac Plates are 3" square flat- or recessed-bottom plates made of Galvalume-coated steel. Used to fasten insulation with the AccuTrac Tool.

Sizes Available:
3"

Quantity Per Box: 1,000



ASAP Insulfast Fastener & Plate



A pre-assembled InsulFast fastener and plastic or metal insulation plate is acceptable for insulation attachment in both mechanically attached and fully adhered applications. Can be used to secure insulation. Compatible with wood (minimum $1\frac{5}{32}$ " [12mm] CDX plywood) and steel decks (22-gauge [0.76 mm] or heavier). Longer fastener sizes available through special order.

Sizes Available:
2 $\frac{1}{4}$ ", 3" – 8" (1" Increments)

Size & Quantity Per Box:
2 $\frac{1}{4}$ " – 8": 250; 10" – 12": 200

Applications requiring a fastener larger than 8" should use HD 14-10 fasteners.



CD-10 Fastener



Applicable for Sure-Seal, Sure-Weld, and Sure-Flex mechanically fastened roofing systems. Can be used to secure membranes, RUSS, and insulation. Compatible with structural concrete decks (minimum 2,500 psi).

Sizes Available:
2" – 6" ($\frac{1}{2}$ " Increments)
7" – 12" (1" Increments)

Size & Quantity Per Box:
2" – 8": 500; 9" – 12": 250



Gyptec Fastener & Plate



Applicable for Sure-Seal, Sure-Weld, and Sure-Flex mechanically fastened and fully adhered systems. Can be used to secure membranes, RUSS, and insulation. Applicable to cementitious wood fiber, lightweight concrete and gypsum decks.

Sizes Available:
2 $\frac{1}{2}$ " – 10" ($\frac{1}{2}$ " Increments)

Size & Quantity Per Box:
2 $\frac{1}{2}$ " – 7": 500; 7 $\frac{1}{2}$ " – 10": 250

GYPTEC PLATE

Sizes Available:
2" Metal membrane plate
3" Metal insulation plate

Quantity Per Box: 1,000



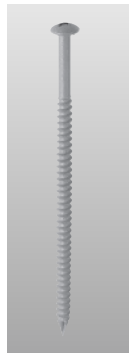
HD 14-10 Fastener



Applicable for Sure-Seal, Sure-Tough, Sure-Weld, and Sure-Flex mechanically fastened and fully adhered systems. Can be used to secure membranes, RUSS, and insulation. Compatible with structural concrete (minimum 3,000 psi).

Sizes Available:
2" – 12" (1" Increments)
14" – 24" (2" Increments)

Size & Quantity Per Box:
2" – 4": 1,000; 5" – 11": 500; 12" – 24": 250



HP Fastener



Applicable for Sure-Seal, Sure-Tough, Sure-Weld, and Sure-Flex mechanically fastened and fully adhered systems. Can be used to secure all EPDM membranes, RUSS, and insulation. Not applicable for securing TPO and PVC membranes. Compatible with wood (minimum $1\frac{5}{32}$ " [12mm] CDX plywood) and steel decks (22-gauge [0.76 mm] or heavier).

Sizes Available:
1 $\frac{1}{4}$ ", 2" – 15" (1" Increments)

Size & Quantity Per Box:
2" – 6": 1,000; 7" – 12": 500; 13" – 15": 250; 1 $\frac{1}{4}$ ": 1000



■ Sure-Seal, Sure-White, and Sure-Tough EPDM

■ Sure-Weld TPO

■ Sure-Flex PVC

HP Lite-Deck Fastener



Applicable for Sure-Seal, Sure-Weld, and Sure-Flex mechanically fastened and fully adhered roofing systems. Used in conjunction with a specially designed 3" Lite-Deck Metal Plate for Insulation attachment to gypsum, cementitious wood fiber (Tectum), and lightweight structural concrete decks. Features an oversize diameter (0.312" shank) and a deep, coarse thread designed for high pullout resistance.

Sizes Available:

2⁵/₈", 3"–10", 12" (1" Increments)

Size & Quantity Per Box:

2⁵/₈"–4": 500; 5"–8": 250; 9",10",12": 125



HP Polymer Seam Plate



Used in conjunction with HP Fasteners to mechanically fasten Sure-Tough membrane and RUSS over steel decks. (22-gauge [0.76mm] or heavier)

Sizes Available:

2" diameter

Quantity Per Box: 1,000

HP-XTRA POLYMER SEAM PLATE

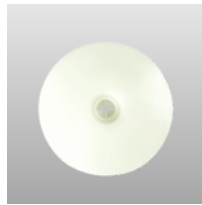
Also Available (not shown)

Used in conjunction with HP-XTRA Fasteners to mechanically fasten Sure-Tough EPDM membranes over steel decks.

Sizes Available:

2³/₈" diameter

Quantity Per Box: 1,000



HP-X ASAP



A pre-assembled HP-X fastener and Piranha Plate™. Applicable for Sure-Weld and Sure-Flex mechanically fastened systems. Can be used to secure membranes, RUSS, and insulation. Compatible with wood (minimum 1⁵/₃₂" [12mm] CDX plywood) and steel decks (22-gauge [0.76 mm] or heavier).

Sizes Available:

2"–10" (1" Increments)

12"–16" (2" Increments)

Size & Quantity Per Box:

2"–9": 250; 10"–12": 200; 14"–16": 150



HP-X Fastener™ & HP-XTRA Fastener



Applicable for Sure-Seal, Sure-Weld, and Sure-Flex mechanically fastened and fully adhered systems. Can be used to secure membranes, RUSS, and insulation. Compatible with wood (minimum 1⁵/₃₂" [12mm] CDX plywood) and steel decks (22-gauge [0.76 mm] or heavier).

Sizes Available:

2"–8" (1" Increments)

10"–16" (2" Increments)

Size & Quantity Per Box:

2"–4": 1,000; 5"–12": 500; 14"–16": 250

HP-XTRA FASTENER

Also available (not shown)

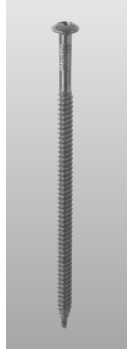
A #21 diameter fastener compatible with wood (minimum 1⁵/₃₂" [12mm] CDX plywood) and steel decks (22-gauge [0.76 mm] or heavier).

Sizes Available:

2"–8" (1" increments)

Size & Quantity Per Box:

500 (2"–6"), 250 (7"–8")



Induction Welding Plate



Used for Sure-Weld and Sure-Flex systems. A 3" round specially coated plate is used with HP-X Fasteners and the corresponding induction welding tool for membrane and insulation attachment.

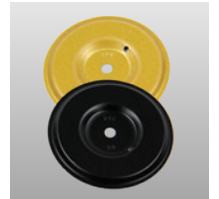
OPTIONS INCLUDE:

Rhinobond Induction Welding TPO Plate & PVC Plate
isoWELD Induction Welding TPO Plate & PVC Plate

Sizes Available:

3" diameter

Quantity Per Box: 500



Insulation Fastening Plate



Along with the appropriate fastener, used for insulation securement over wood (minimum 1⁵/₃₂" [12mm] CDX plywood), steel (22-gauge [0.76 mm] or heavier), and concrete decks. Available in steel and plastic versions.

Sizes Available:

3" diameter

Quantity Per Box: 1,000



Fasteners & Plates

- Sure-Seal, Sure-White, and Sure-Tough EPDM
- Sure-Weld TPO
- Sure-Flex PVC

Insulfast™ Fastener



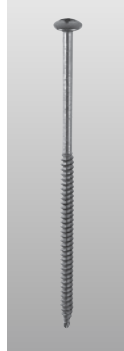
Applicable for Sure-Seal, Sure-White, Sure-Weld, and Sure-Flex mechanically fastened and fully adhered systems. Can be used to secure insulation. Compatible with wood (minimum 1⁵/₃₂" [12mm] CDX plywood) and steel decks (22-gauge [0.76 mm] or heavier).

Sizes Available:

1⁵/₈", 2", 2¹/₄", 3"-8" (1" increments)

Size & Quantity Per Box:

1⁵/₈", 2¹/₄", 2"-8": 1,000



Piranha Plate



Along with the appropriate fastener, used to secure Sure-Weld and Sure-Flex membranes over wood (minimum 1⁵/₃₂" [12mm] CDX plywood), steel (22-gauge [0.76 mm] or heavier), and concrete decks.

Sizes Available:

2³/₈" diameter

Quantity Per Box: 1,000

HP-XTRA PIRANHA PLATE

Also Available (not shown)

Used with HP-XTRA Fasteners to secure Sure-Weld and Sure-Flex membranes to wood (minimum 1⁵/₃₂" [12mm] CDX plywood), steel (22-gauge [0.76 mm] or heavier) decks.

Sizes Available:

2³/₈" diameter

Quantity Per Box: 1,000



Lite-Deck Metal Plate



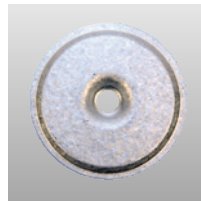
Used in conjunction with HP Lite-Deck Fasteners for insulation attachment to gypsum, cementitious wood fiber (Tectum), and lightweight concrete decks.

Sizes Available:

3" diameter

Quantity Per Box:

500



Polymer Pre-Assembled



Pre-assembled HP Fastener and Polymer Seam Plate. Applicable to wood (minimum 1⁵/₃₂" [12mm] CDX plywood) and steel decks (22-gauge [0.76 mm] or heavier).

Sizes Available:

2"– 12" (1" Increments)

Size & Quantity Per Box:

2": 500; 3": 450; 4", 5": 400; 6": 350; 7", 8": 300; 9": 250; 10"– 12": 200



Metal Fastening Bar



Galvalume™-coated metal bar used to mechanically fasten EPDM membranes. The bar can be easily cut to desired length. Installed using HP-X Fasteners.

Sizes Available:

1" wide x 10' long

Size & Quantity Per Box:

50 pcs; 500 Linear Feet



Purlin Fastener



Used with Carlisle's Metal Retrofit Roofing System to secure membrane and RUSS to structural steel purlins. Provides superior back-out resistance in standard 16-gauge Purlins.

Sizes Available:

3³/₄", 4³/₄", 5³/₄", 7", 8"

Quantity Per Box: 1,000



Oval Barbed Plate

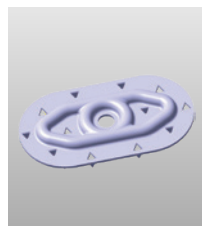


Along with the appropriate fastener, used to secure Sure-Flex membranes to wood (minimum 1⁵/₃₂" [12mm] CDX plywood) and steel decks (22-gauge [0.76 mm] or heavier).

Sizes Available:

1¹/₂" x 2³/₄" Oval

Quantity Per Box: 500



■ Sure-Seal, Sure-White, and Sure-Tough EPDM

■ Sure-Weld TPO

■ Sure-Flex PVC

RetroDriller Fastener



A specially designed fastener with a 1/2" drill point used for attaching Sure-Tough, Sure-Weld, and Sure-Flex membranes to structural steel purlins (up to 3/16") in standing seam metal roof retrofit applications.

Sizes Available:

4", 5", 6", 8" & 10"

Size & Quantity Per Box:

500



Term Bar Nail-In



Used with Carlisle's Termination Bar or Seam Fastening Plates to secure membrane to concrete block, brick, or structural concrete walls. A zinc-plated steel pin provides excellent corrosion resistance while the zinc alloy body provides excellent holding power.

Sizes Available:

1 1/4"

Quantity Per Box:

1,000



Seam Fastening Plate



A 2" diameter metal plate, Applicable with HP, MP 14-10 and CD-10 fasteners, used for insulation attachment on MF Systems or membrane securement at angle changes on Adhered Systems in conjunction with the appropriate Carlisle fastener.

Sizes Available:

2" diameter

Quantity Per Box:

1,000



Termination Bar (Aluminum)



Extruded aluminum bar that is designed for securing and sealing compression type flashing terminations. The bar features a top edge for ease of applying Carlisle's Lap Sealant for EPDM installations or Universal Single Ply Sealant for TPO installations. The bar can be easily cut to any desired length.

Sizes Available:

1" wide x 10' long

Quantity Per Box:

50 pcs; 500 Linear Feet



SecurFast™ Insulation Fastening Plate



Designed for SECUROCK® securement under Sure-Seal, Sure-White, Sure-Flex, or Sure-Weld roofing systems. Plates are stamped from Galvalume-coated steel for long-term protection against corrosion.

Sizes Available:

2 7/8"

Quantity Per Box:

1,000



Dual Prong Base Sheet Fastener



Designed to secure base sheets over gypsum, fibrous cement, and lightweight concrete decks. Fasteners are installed using Carlisle's stand-up Dual Prong Applicator, which holds and drives the tube into the deck and sets the wires.

Sizes Available:

1.8"

Quantity Per Box:

500



Adhesives, Primers, and Sealants

- Sure-Seal, Sure-White, and Sure-Tough EPDM
- Sure-Weld TPO
- Sure-Flex PVC
- FleeceBACK
- Multiple-Ply Systems
- Low-VOC Product

90-8-30A EPDM Bonding Adhesive



A high-strength, solvent-based contact adhesive that allows quick bonding of cured EPDM membranes to various substrates. Designed for bonding Sure-White, Sure-Seal, Sure-Tough, and Epichlorohydrin membranes to approved substrates.

Coverage Rate: 60 square feet per gallon of finished surface.

Packaging: 5-gallon pail

Product Number: 302124

Shelf Life: 12 months



Aqua Base 120 Bonding Adhesive



A semi-pressure-sensitive, water-based adhesive. This product may be used as a two-sided contact adhesive with EPDM and TPO membranes. Also compatible with FleeceBACK EPDM and FleeceBACK TPO membranes.

Coverage Rate: 120 square feet per gallon of finished surface. (May vary due to conditions such as insulation type or wall construction.)

Packaging: 5-gallon pail

Product Number: 307431

Shelf Life: 12 months



CAV-GRIP® III Adhesive/Primer



Carlisle's CAV-GRIP III is a spray applied aerosol contact adhesive and primer used to adhere EPDM and TPO to horizontal and vertical surfaces and FleeceBACK membranes to horizontal surfaces. CAV-GRIP III can also be used as a primer for VapAir Seal 725TR and as an unexposed asphalt primer for Flexible FAST.

Coverage Rate: See Product Data Sheet.

Packaging:

40# aerosol cylinder – Product Number: 329902

85# aerosol cylinder – Product Number: 332659

Shelf Life: 12 months unopened container



CAV-GRIP PVC Adhesive



Carlisle's CAV-GRIP PVC is a low-VOC adhesive that can be used for adhering standard PVC to a variety of substrates on both wall and field applications, and for adhering FleeceBACK membranes to vertical walls.

Coverage Rate: See Product Data Sheet.

Packaging:

Standard cylinder – Product Number: 335178

Large cylinder – Product Number: 336104

Shelf Life: 12 months unopened container



CAV-PRIME TPO Primer



Carlisle's TPO Primer packaged in a pressurized cylinder for spray application. Carlisle's TPO Primer is a high-solids content, clear (translucent color), polymer-based splice primer used to prepare TPO membrane for improved adhesion to pressure-sensitive (PS) TPO accessories. CAV-PRIME primers are applied using a self-contained spray system coupled with a spray gun with extension wand and applicator attachment kit. CAV-PRIME spray guns, hoses, and applicator attachment kits are each sold separately.

Coverage Rate: 1,320 sq. ft./cylinder

Packaging: 27 lbs Cylinder

Product Number: 341448



CAV-PRIME Low-VOC EPDM & TPO Primer



Carlisle's Low-VOC membrane primer packaged in a pressurized cylinder for spray application. Low-VOC Primer is a solvent-based product designed for one-step priming of EPDM or TPO surfaces prior to the application of SecurTAPE™, Factory-Applied Tape™, Coverstrip, and all other pressure-sensitive (PS) products. This product is designed to comply with VOC regulations. CAV-PRIME is applied via a self-contained spray system coupled with a spray gun with extension wand and applicator attachment kit. CAV-PRIME spray guns, hoses, and applicator attachment kits are each sold separately.

Coverage Rate: 1,760 sq. ft./Cylinder

Packaging: 32 lbs Cylinder

Product Number: 341449



CAV-PRIME HP-250 Primer



Carlisle's HP-250 Primer packaged in a pressurized cylinder for spray application. HP-250 Primer is a solvent-based product designed for one-step cleaning and priming of EPDM surfaces prior to the application of SecurTAPE, Factory-Applied Tape, and all other pressure-sensitive (PS) products. CAV-PRIME primers are applied using a self-contained spray system coupled with a spray gun with extension wand and applicator attachment kit. CAV-PRIME spray guns, hoses, and applicator attachment kits are sold separately.

Coverage Rate: 1,320 sq. ft./cylinder

Packaging: 27 lbs Cylinder

Product Number: 341445



* Not compliant in all CA counties

■ Sure-Seal, Sure-White, and Sure-Tough EPDM

■ FleeceBACK

■ Sure-Weld TPO

■ Multiple-Ply Systems

■ Sure-Flex PVC

■ Low-VOC Product

CCW-702LV Primer



A low-VOC, solvent-based, high-tack adhesive designed to promote maximum adhesion of Carlisle 725TR Air and Vapor Barrier to approved substrates. Also used as a surface prep to promote adhesion of FAST Adhesive.

Coverage Rate: 300-350 square feet per gallon.

Packaging: 5-gallon pails

Product Number: 316148

Shelf Life: 12 months unopened container



EPDM X-23 Low-VOC Bonding Adhesive



A high-strength, solvent-based contact adhesive that bonds EPDM membranes to various porous and non-porous substrates. This product meets the <250 gpl VOC content requirements of the OTC Model Rule for Single-Ply Roofing Adhesives.

Coverage Rate: 60 square feet per gallon of finished surface.

Packaging: 5-gallon pail

Product Number: 324002

Shelf Life: 12 months



Cold Applied Adhesive



An asphalt-modified polyether, one-sided, wet lay-in adhesive designed to adhere to FleeceBACK AFX membranes and Carlisle's modified base sheet.

Coverage Rate: 67 square feet per gallon of finished surface for smooth surfaces. 50 square feet per gallon of finished surface for uneven surfaces.

Packaging: 5-gallon pail

Product Number: 319689

Shelf Life: 9 months when stored below 90°F



Flexible FAST Adhesive



A low-rise, two-component, VOC-free, energy-absorbing, impact-resistant adhesive used to adhere FleeceBACK membranes and insulation boards to various substrates for a totally non-penetrating system application. Flexible FAST adhesive provides a wider window of temperature workability (25°F - 120°F).

Coverage Rate: See Product Data Sheet.

Packaging:

50-gallon drums – Part A – Product Number: 310472

50-gallon drums – Part B – Product Number: 310473

15-gallon drums – Part A – Product Number: 317329

15-gallon drums – Part B – Product Number: 317331

5-Gallon Jug – Part A – Product Number: 329722

5-Gallon Jug – Part B – Product Number: 329723

Dual Tank HFO – Part A – 336119

Dual Tank HFO – Part B – 336341

Dual Cartridge – Product Number: 322958

Shelf Life: 12 months (Part A and Part B)



Cut-Edge Sealant



TPO CUT-EDGE SEALANT

A clear, free-flowing polymeric material designed for sealing cut edges (exposed fabric) of Sure-Weld TPO membrane.

Coverage Rate: 225'-275' per 16-oz. bottle when applied with 1/8" bead.

Packaging: (8) 16-oz. Bottles/carton

Product Number:

303436 – Clear

327530 – Low-VOC

Shelf Life: 12 months

PVC CUT-EDGE SEALANT

Also available (not shown)

PVC Cut-Edge Sealant is not required for use, but can be used for sealing cut edges (exposed fabric) of Sure-Flex PVC membrane. Cut-Edge Sealant is clear in color.

Packaging: (12) 16-oz. Bottles/carton

Product Number: 307754

Shelf life: 12 months

Coverage Rate: 225'-275' per bottle when applied with 1/8" bead.



HP-250 EPDM Primer



A solvent-based product designed for cleaning and priming EPDM membranes prior to the application of pressure-sensitive products.

Coverage Rate: As high as 450 square feet per gallon with Kleen EPDM membrane. Approx. 250 square feet per gallon with dusted EPDM membrane.

Packaging:

(6) 1-gallon cans – Product Number: 302070

3-gallon pails – Product Number: 332683

Shelf Life: 12 months



* Not compliant in all CA counties

Adhesives, Primers, and Sealants

■ Sure-Seal, Sure-White, and Sure-Tough EPDM

■ Sure-Weld TPO

■ Sure-Flex PVC

■ FleeceBACK

■ Multiple-Ply Systems

■ Low-VOC Product

LIQUISEAL® Liquid Flashing



A two-component, polyurethane-based system that creates a cold-applied liquid flashing that is compatible with all Carlisle EPDM, TPO, PVC and KEE HP membranes. LIQUISEAL Liquid Flashing is ideal for flashing oddly shaped penetrations and tying together dissimilar roofing systems without building a knee wall or impeding drainage.

Coverage Rate: 13.6 square feet per gallon.

Packaging: (8) ½ gal/carton, 1-gallon pails

Product Number:

330891 – White ½ gallon

330892 – White 1-gallon

333301 – Gray ½ gallon

333302 – Gray 1-gallon

Shelf Life: 12 months unopened container



LOW-VOC HydroBond™ Adhesive



A water-based, wet lay-in, one-sided dispersion adhesive used to adhere all Sure-Flex PVC smooth-backed and FleeceBACK membranes to a variety of substrates. *Cannot be used with KEE HP, TPO or EPDM smooth-backed membrane.*

Coverage Rate:

Roller application – 100 square feet per gallon of finished surface.

Spray application – 133 square feet per gallon of finished surface.

Packaging: 5-gallon pail

Product Number: 335186

Shelf Life: 12 months



Low-VOC Bonding Adhesive*



A high-strength, solvent-based contact adhesive that allows bonding of all EPDM and TPO membranes to various porous and non-porous substrates. This product meets the <250 gpl VOC content requirements of the OTC Model Rule for Single-Ply Roofing Adhesives.

Coverage Rate: 60 square feet per gallon of finished surface.

Packaging: 5-gallon pail

Product Number: 303090

Shelf Life: 12 months



Low-VOC Primer



Designed for one-step cleaning and priming of EPDM and TPO surfaces prior to the application of pressure-sensitive products. It is a Low-VOC product that is ideal for use where environmental issues are a concern.

Coverage Rate: As high as 700 square feet per gallon with TPO or Kleen EPDM membrane. Approx. 250 square feet per gallon with dusted EPDM membrane.

Packaging:

(6) 1-gallon cans – Product Number: 329160

3-gallon pails – Product Number: 332714

Shelf Life: 12 months



LOW-VOC Bonding Adhesive 1168*



A high-strength, solvent-based contact adhesive that allows bonding of all EPDM and Sure-Weld TPO membrane to various porous and non-porous substrates. This product meets the requirements for SCAQMD regulations.

Coverage Rate: 60 square feet per gallon of finished surface.

Packaging: 5-gallon pail

Product Number: 318847

Shelf Life: 12 months



Low-VOC PVC Bonding Adhesive



A high-strength, solvent-based contact adhesive that allows bonding of PVC and KEE HP membranes to various porous and non-porous substrates. Meets the <250 gpl VOC content requirements of the OTC Model Rule for Single-Ply roofing adhesives.

Coverage Rate: 60 square feet per gallon of finished surface.

Packaging: 5-gallon pail

Product Number: 309126

Shelf Life: 12 months



** Certain restrictions apply, see Product Data Sheet.

* Not compliant in all CA counties

■ Sure-Seal, Sure-White, and Sure-Tough EPDM

■ FleeceBACK

■ Sure-Weld TPO

■ Multiple-Ply Systems

■ Sure-Flex PVC

■ Low-VOC Product

Low-VOC PVC Step 1 Activator



A high-strength, solvent-based activator that allows PVC Pressure-Sensitive Cover Strip to be bonded to PVC or KEE HP membranes. Meets the <250 gpl VOC content requirements of the OTC Model Rule.

Coverage Rate: As high as 250–300 square feet per gallon.

Packaging: (2) 1-gallon cans

Product Number: 332651

Shelf Life: 12 months



Low-VOC UN-TACK Adhesive Remover and Cleaner



Designed for use with TPO and EPDM membranes, Low-VOC UN-TACK Cleaner is used to remove adhesives and primers from a variety of surfaces including single-ply membranes, accessories, metal, plastic, rubber, and glass. May also be used to flush CAV-GRIP III Hoses and Guns prior to storage. Do not use with CAV-PRIME.

Coverage Rate: 250-300 FT²/Cylinder surface area to be cleaned.

Packaging: Small Aerosol Cylinder

Product Number: 330793



Low-VOC PVC Step 2 Primer



A high-solids-content, clear Polymer-based primer used to prepare KEE HP and PVC membrane to be bonded to PVC Pressure Sensitive Cover Strip. Meets the <250 gpl VOC content requirements of the OTC Model Rule.

Coverage Rate: As high as 700 square feet per gallon.

Packaging: (2) 1-gallon cans

Product Number: 332652

Shelf Life: 6 months



CAV-GRIP PVC UN-TACK Low-VOC Adhesive Remover and Cleaner



Designed to flush CAV-GRIP PVC hoses and guns prior to storage, CAV-GRIP PVC UN-TACK is also used to remove adhesives and primers from a variety of surfaces including PVC membranes, accessories, metal, plastic, rubber, and glass.

Coverage Rate: 250-300 FT²/Cylinder surface area to be cleaned.

Packaging: Small Aerosol Cylinder

Product Number: 336090



CAV-PRIME Low VOC Hose & Gun Cleaner



Designed to clean the spray guns and hoses used to apply CAV-PRIME primers. It can also be used to remove primer from various surfaces including single-ply membranes, accessories, and metal.

Packaging: Small Aerosol Cylinder

Product Number: 341407



PVC Step 2 Primer



A high-solids-content, clear Polymer-based primer used to prepare KEE HP and PVC membrane to be bonded to PVC Pressure Sensitive Cover Strip.

Coverage Rate: As high as 200–250 square feet per gallon.

Packaging: (2) 1-gallon cans

Product Number: 332653

Shelf Life: 12 months



** Certain restrictions apply, see Product Data Sheet.

* Not compliant in all CA counties

Adhesives, Primers, and Sealants

■ Sure-Seal, Sure-White, and Sure-Tough EPDM

■ Sure-Weld TPO

■ Sure-Flex PVC

■ FleeceBACK

■ Multiple-Ply Systems

■ Low-VOC Product

PVC and KEE HP Membrane Cleaner



This cleaner is specially formulated to clean both new and in-service Sure-Flex PVC and KEE HP membranes.

Coverage Rate: 400 square feet (one surface) per gallon.

Packaging: 5-gallon closed-top pail

Product Number: 329729



One-Part Pourable Sealer



A single-component, moisture-curing, elastomeric polyether sealant that is compatible with Carlisle's EPDM, TPO, and PVC membranes. Designed to provide a flexible, durable and long-lasting seal around hard-to-flash penetrations. The sealant's consistency allows for quick pocket filling without mixing. Unused sealant is usable for up to 30 days if pouch is resealed with original cap.

Coverage Rate: 122 cubic inches of volume per ½-gallon pouch.

Packaging: (4) ½-gallon pouches per bucket

Product Number:

307647 – Black

307603 – White

Shelf Life: 12 months unopened container



Solvent-Free EPDM Bonding Adhesive



A high-strength, low-odor, polymer-based adhesive that allows fast installation of EPDM membranes and cured flashings to various substrates. This adhesive is specially designed for installing reinforced and non-reinforced EPDM membranes.

Coverage Rate: 100 square feet per gallon of finished surface.

Packaging: 5-gallon pail

Product Number: 318127

Shelf Life: 6 months



Splice Cement



Designed for splicing cured-to-cured EPDM membranes and non-PS flashings, this high-strength, solvent-based contact cement allows quick bonding of flashing, sheeting, and cured rubber seams. Formulated for application with a ½" medium nap roller and/or a ½"-thick paint brush, the versatile tack time allows large areas to be coated and adhered at one time.

Coverage Rate: 100 square feet per gallon.

This product is for use on non-warranted projects only.

Packaging: (6) 1-gallon cans – Black and White

Product Number:

302342 – Black

302147 – White

Shelf Life:

12 months – Black

9 months – White



Sure-Seal and Sure-White Lap Sealants



Gun-consistency material used to seal the exposed cut edge of Sure-Tough membranes, and the edges of Elastoform Flashing.

Coverage Rate: 22' per tube using a 5/16" bead.

Packaging: 25 Tubes/carton

Product Number:

302174 – Black

302172 – White

Shelf Life: 12 months



Sure-Seal EPDM Two-Part Pourable Sealer



A two-component, solvent-free, polyurethane-based product compatible with Carlisle's Sure-Seal and Sure-White membranes. Designed to provide a flexible, durable and long-lasting seal around hard-to-flash penetrations. Can also be used to provide a permanent tie-in between Sure-Seal membranes and a built-up roof surface, and for attaching lightning rod bases and ground cable clips to the membrane surface.

Coverage Rate: 231 cubic inches of volume per properly mixed gallon.

Packaging:

Part A – (2) 1-gallon pails/ctn.

Part B – (2) 1-pint cans/ctn.

Product Number: 302084

Shelf Life: 12 months unopened container

* Not compliant in all CA counties



** Certain restrictions apply, see Product Data Sheet.

■ Sure-Seal, Sure-White, and Sure-Tough EPDM

■ FleeceBACK

■ Sure-Weld TPO

■ Multiple-Ply Systems

■ Sure-Flex PVC

■ Low-VOC Product

Sure-Weld TPO Bonding Adhesive



A high-strength, solvent-based contact adhesive that allows bonding of Sure-Weld membrane to various porous and non-porous substrates.

Coverage Rate: 60 square feet per gallon of finished surface.

Packaging: 5-gallon pail

Product Number: 302099

Shelf Life: 12 months



X-Tenda Coat XTRA Silicone Coating

A single-component, moisture-cured, fluid-applied silicone coating that is specially formulated to meet low-VOC requirements. Once cured, the silicone coating membrane offers excellent resistance to water intrusion, UV exposure, and natural weathering. It is excellent for waterproofing and restoring existing roof systems. Available in White, Light Gray, Dark Gray, Tan, Santa Fe Tan, and Terra Cotta.

Packaging: 5-gallon pail/50-gallon drum

Water Cut-Off Mastic



A one-component, low-viscosity, self-wetting, butyl-blend mastic used in conjunction with roofing and waterproofing systems. It is used as a sealing agent between various membranes and substrates for compression-type terminations.

Coverage Rate: 10' per tube, using a 7/16" bead.

Packaging: 25 Tubes/carton

Product Number: 319621

Shelf Life: 12 months unopened container



TPO Primer



A high-solids, clear polymer-based primer used to prepare TPO membrane prior to the application of Pressure-Sensitive (PS) products.

Coverage Rate: 200 – 250 square feet (one surface) per gallon.

Packaging: (6) 1-gallon cans

Product Number: 310471

Shelf Life: 12 months unopened can



Weathered Membrane Cleaner



Used to clean both new and in-service EPDM and TPO membranes prior to seaming or application of Pressure-Sensitive (PS) products. Helps to loosen and remove dirt and other contaminants from the surface of the membranes and leaves a suitable surface for application of adhesive or primer. Please refer to the Product Data Sheets for specific instructions for EPDM and TPO applications.

Coverage Rate: 400 square feet (one surface) per gallon.

Packaging:

(2) 1-gallon closed-top cans,

5-gallon closed-top pail

1-gallon cans

Product Number: 304066 5-gallon pail

Product Number: 302074



Universal Single-Ply Sealant



A 100%-solids, solvent-free, one-part, polyether sealant that provides a weathertight seal to a variety of building substrates.

Coverage Rate: 25' per tube or 600' per carton using a 1/4" bead.

Packaging: 24 Tubes/carton

Product Number: 310131

Shelf Life: 12 months unopened container (@ <90°F)



X-Tenda Coat Classic Acrylic Coating

A 100% acrylic, single-component, water-based, premium quality elastomeric coating for spray, brush, or roller application. This product is designed to provide protection for a wide range of building surfaces such as roofs, vertical walls, and masonry. It is excellent for waterproofing and restoring existing roof systems. Available in White, Light Gray, Dark Gray and Tan.

Packaging: 5-gallon pail/55-gallon drum

Low-VOC Membrane Cleaner



Use to clean both new and in-service, PVC, KEE HP, TPO, and EPDM membranes prior to the seaming process. Low-VOC Membrane Cleaner contains 100% EPA-exempted solvents and can be used in a wide variety of temperatures.

Packaging: 1-gallon can (2) & 5-gallon can

Product Number:

326160 1-gallon can (2)

326860 5-gallon can



** Certain restrictions apply, see Product Data Sheet.

* Not compliant in all CA counties

Air & Vapor Barriers

SureMB 90 Base Ply and SureMB 120 Base Ply

SBS-modified asphalt base sheets. Can be used in multi-ply roofing systems as an air and vapor barrier, or as a temporary roof for up to 60 days. This product is fiberglass-reinforced and meets or exceeds requirements of ASTM 6363 Type 1. When used as an air and vapor barrier, suitable substrates include concrete (primer required), DensDeck Prime, and SECUROCK.



SureMB 90 Base Ply

Coverage Rate: 150 FT²/roll (excluding lap)

Packaging: 39 3/8" x 49' 1"

Thickness: 90 mils

Weight: 94 lbs/roll

Product Number: 307253

Shelf Life: 12 months

SureMB 120 Base Ply

Coverage Rate: 100 sq. ft.

Packaging: 39 3/8" x 32' 9"

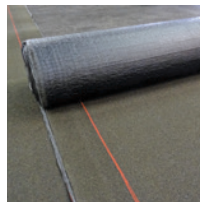
Thickness: 120 mils

Weight: 88 lbs/roll

Shelf Life: 12 months

SureMB 90TG Base Ply and SureMB 120TG Base Ply

Premium smooth-surfaced SBS torch-applied membranes reinforced with fiberglass mat. Can be used as a base ply in multi-ply systems, as an air and vapor barrier, or as a temporary roof for up to 60 days. Excellent for low temperature applications when use of peel-and-stick membranes may not be possible. Ideal substrates include primed concrete and primed SECUROCK.



SureMB 90TG Base Ply

Coverage Rate: 161 FT²/roll (excluding lap)

Packaging: 39 3/8" x 49' 1"

Thickness: 90 mils

Weight: 95 lbs/roll

Product Number: 323887

Shelf Life: 12 months unopened container

SureMB 120TG Base Ply

Coverage Rate: 100 FT²/roll (excluding lap)

Packaging: 39 3/8" x 32' 9"

Thickness: 120 mils

Weight: 88 lbs/roll

Product Number:

Shelf Life: 12 months

SureMB 70 SA Base Ply

Smooth sand surface SBS (Styrene-Butadiene-Styrene) self-adhered membrane designed to be used as an air and vapor barrier and/or temporary roof (for up to 60 days).

Coverage Rate: 200 FT²/roll

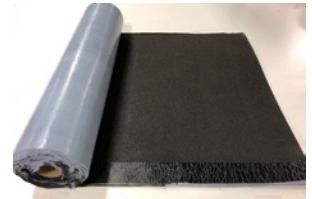
Packaging: 39 3/8" x 61'

Thickness: 70 mils

Weight: 78 lbs/roll

Product Number: 335630

Shelf Life: 12 months from manufacture date when stored indoors in temperatures below 90°F (32°C)



VapAir Seal MD

A 15-mil composite reinforced aluminum-coated poly with a self-adhering SBS. Used as an air and vapor barrier direct to metal decking. Meets UL 1256 and FM 4470 internal fire ratings. Reinforced aluminum-coated poly stands up to the toughest roof traffic. This product's self-healing characteristics allow for fastening penetration while maintaining IECC air leakage requirements of 0.04 cfm.

Coverage Rate: 458 FT²/roll

Packaging: 42 1/2" x 131'

Thickness: 15 mils

Weight: 28 lbs/roll

Product Number: 321931

Shelf Life: 12 months unopened container



VapAir Seal™ 725TR

A 40-mil composite consisting of 35 mils of self-adhering rubberized asphalt laminated to a 5-mil woven polypropylene film. Used as an air and vapor barrier/temporary roof, one-piece poly release liner prevents the material from bonding to itself in the roll and is easily removed for installation. May be used as a temporary roof for up to 120 days. Common substrates include concrete, DensDeck®, and SECUROCK®.

Coverage Rate: 325 FT²/roll

Packaging: 39" x 100'

Thickness: 40 mils

Weight: 67 lbs/roll

Product Number: 330170

Shelf Life: 12 months unopened container



Edge Metal

Carlisle's SecurEdge perimeter roof edge systems are the first line of defense against wind, ensuring a polished perimeter and long-lasting protection. Carlisle's unmatched line of roof edge products are available in a range of materials, profiles, and color options to meet any project's needs.

SecurEdge 200/2000 Systems

Carlisle's SecurEdge 200/2000 systems offer more than 20 different fascia, copying, and gutter systems. Fascia and copying products are ANSI/SPRI ES-1 tested and FM-approved and can be warranted for up to 30 years under Carlisle's Golden Seal Total Roofing System Warranty. SecurEdge 200/2000 systems are available in 30 standard colors. Custom finishes and colors are available upon request.

SecurEdge 300/3000 Systems

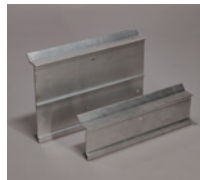
Carlisle's SecurEdge 300/3000 systems offer more than 15 different fascia, copying, and gutter systems. Fascia and copying products are ANSI/SPRI ES-1 tested and FM-approved and can be warranted for up to 30 years under Carlisle's Golden Seal Total Roofing System Warranty. SecurEdge 200/2000 systems are available in 30 standard colors. Custom finishes and colors are available upon request.

SecurEdge 400/4000 Systems

Carlisle's SecurEdge 400/4000 systems offer more than 10 different fascia, copying, and gutter systems. Fascia and copying products are ANSI/SPRI ES-1 tested and FM-approved and can be warranted for up to 30 years under Carlisle's Golden Seal Total Roofing System Warranty. SecurEdge 200/2000 systems are available in 30 standard colors. Custom finishes and colors are available upon request.

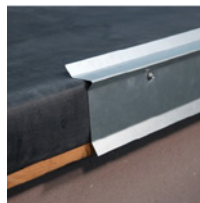
Extruded Fascia Cleat

Carlisle's Extruded Fascia Cleat is a continuous .080" extruded aluminum cleat that is available in 12' lengths. This product features pre-punched holes for fasteners spaced 12" on center and may be used with shop fabricated edge metal when Carlisle metal flat sheets are used to fabricate the cover.



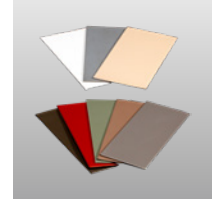
Galvanized Cleat

Carlisle's Galvanized Cleat options include a Drip Edge Gravel Stop Flat Copying and a Snap-On Fascia Tapered Coping. Made out of 22-gauge galvanized steel, and available in multiple sizes, these products can be included under Carlisle's Golden Seal Total Roofing System Warranty.



Sure-Weld TPO Coated Metal

Sure-Weld TPO Coated Metal is a 24-gauge galvanized steel sheet that is coated with a layer of .035" non-reinforced TPO flashing. TPO membrane may be welded directly to the coated metal, eliminating the need to strip in metal with a separate piece of TPO Pressure-Sensitive Coverstrip.



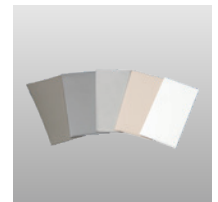
Sheet Size: 4' x 10'

Quantity: 10 or 25 sheets per pallet – White, Gray, and Tan

5 sheets per pallet – Patina Green, Rock Brown, Terra Cotta, Medium Bronze, and Slate Gray

Sure-Flex PVC Coated Metal

Carlisle's Sure-Flex PVC Coated Metal is a galvanized steel sheet with a laminate of non-reinforced Sure-Flex PVC flashing. Sure-Flex PVC or KEE HP membrane may be welded directly to the coated metal, eliminating the need to strip in the metal with a separate piece of membrane.

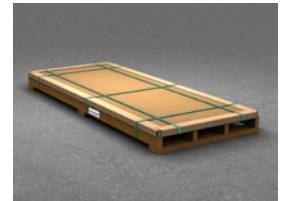


Sheet Size: 4' x 10'

Quantity: 10 sheets per pallet – White, Gray, Tan, Light Gray and Slate Gray

Kynar Coated Galvalume® Steel and Aluminum Architectural Flat Sheet

Carlisle's Kynar (PVDF) Coated Galvalume Steel and Aluminum Architectural Flat Sheet is for general sheet metal use in building applications and can be utilized for fascia panels, soffits, gravel stops, and copings.



Sheet Size: 4' x 10'

Insulation Reference

Carlisle Flat EPS

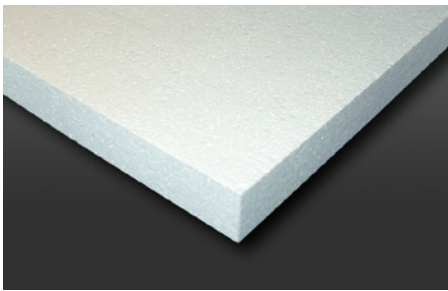
Engineered rigid insulation made of high-performance, water-resistant expanded polystyrene (EPS). Meets ASTM C578 requirements, includes extensive UL and FM ratings, and can be applied direct to metal decks.

Sizes: 4' x 4' or 4' x 8'; custom sizes and tapered panels available

Thicknesses: 1/4" to 40" per panel

Densities: 1 to 3 lb/ft³

Compressive Strength: 10 to 60psi



Carlisle HD EPS Composite

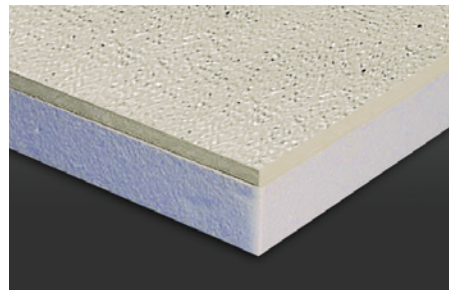
High-density polyiso cover board (1/2") laminated to Carlisle's engineered EPS. Five times lighter than traditional cover boards. Approved for both adhered and mechanically attached systems. Provides enhanced protection against severe weather and hail and meets Title 24 requirements for continuous insulation on combustible decks.

Sizes: 4' x 4' or 4' x 8'; custom sizes and tapered panels available

Thickness: 1 1/2" to 6"

(including 1/2" HD polyiso cover board)

Densities: 1 to 3 lb/ft³



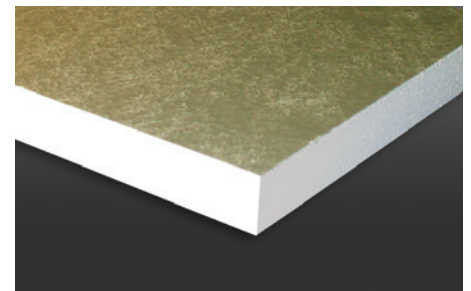
Carlisle SP EPS

Premium coated-glass-faced insulation approved for mechanically attached or self-adhering systems without a slip sheet. Provides up to R-30 in a single layer.

Sizes: 4' x 4' or 4' x 8'; custom sizes and tapered panels available

Thicknesses: 1/4" to 6"

Densities: 1.25 to 3 lb/ft³



Carlisle Tapered EPS

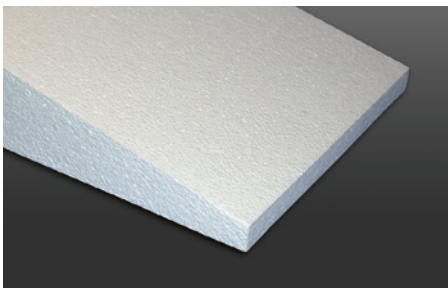
Tapered engineered EPS insulation available in virtually any slope. Can be combined with Carlisle polyiso for tapered hybrid roof systems. Design assistance is available from Carlisle's Tapered Design Team. Custom saddles and crickets also available.

Slope: Virtually any slope

Thickness: 1/2" to 40"

Densities: 1 to 3 lb/ft³

Compressive Strength: 10 to 60psi



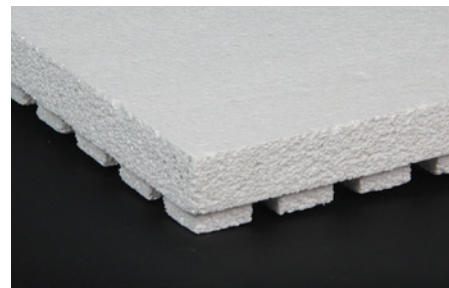
ChannelDry®

Carlisle's high-performance ChannelDry insulation is composed of lightweight, closed-cell expanded polystyrene meeting the requirements of ASTM C578 Type IX. ChannelDry has excellent dimensional stability, compressive strength, and water-resistant properties. ChannelDry is designed to be mechanically fastened directly to concrete decks. The use of ChannelDry in conjunction with one-way and two-way relief vents allows the installation of the roof system to begin upon structural cure of concrete.

Sizes: 4' x 4'

Thickness: 2"

Compression Strength: 25psi



InsulBase NH

A Living Building Challenge (LBC) "Red List Free" rigid roof insulation panel composed of a closed-cell polyisocyanurate foam core bonded on each side to fiber-reinforced paper facers. InsulBase NH contains **zero halogenated flame retardants**.

Sizes: 4' x 4' and 4' x 8'

Thickness: 1/2" to 4 1/2"

Compressive

Strength: 20 and 25psi



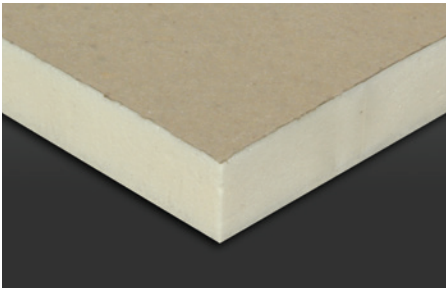
InsulBase® Polyiso

A rigid roof insulation panel composed of a closed-cell polyisocyanurate foam core bonded to **glass-reinforced felt (GRF) facers**. UL and FM approved for direct application over steel decks, polyiso provides the highest R-value per inch of any commercially available insulation product.

Sizes: 4' x 4' and 4' x 8'

Thicknesses: ½" to 4½"

Compressive Strengths: 20 and 25psi



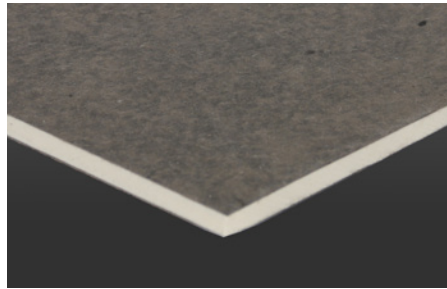
InsulBase HD

A rigid-roof insulation cover board composed of a high-density closed-cell polyisocyanurate foam core bonded to **glass-reinforced felt (GRF) facers**. InsulBase HD is specifically designed for use as a cover board in mechanically-attached systems only.

Sizes: 4' x 4' and 4' x 8'

Thicknesses: ½"

Compressive Strengths: 109psi max



RapidLock Polyiso

InsulBase RL® and **SecurShield RL** are standard density polyisocyanurate roof boards specially designed to act as the hook in the RapidLock (hook and loop) system.

InsulBase RL utilizes a **GRF facer** and **SecurShield RL** a **CGF facer**.

SecurShield HD RL is a high-density rigid roof polyisocyanurate board bonded to **coated-glass (CGF) facers**.

InsulBase RL and SecurShield RL

Size: 4' x 8'

Thickness: 2.0" and 2.6"

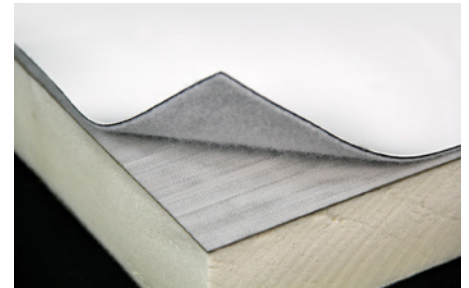
Compressive Strengths: 20psi

SecurShield HD RL

Size: 4' x 8'

Thickness: 0.5"

Compressive Strength: 109psi max



R-Tech® Fanfold Recover Board

High-performance water-resistant facers laminated to Carlisle engineered EPS. Code-approved for recover applications and compatible with both light- and dark-colored single-ply membranes. Five times lighter than traditional cover boards with a coverage rate of 200 sq. ft. per piece. Saves time and labor on the roof.

Sizes: 2' x 4' (folded), 4' x 50' (unfolded)

Thicknesses: ¾", ½", ¾"



SecurShield®

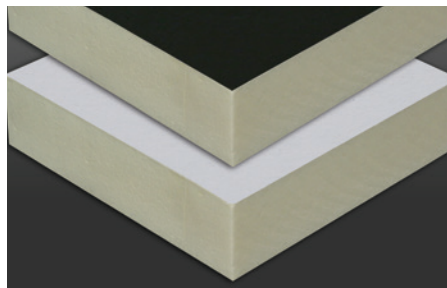
ReadyFlash
TECHNOLOGY

A rigid roof insulation panel composed of a closed-cell polyisocyanurate foam core bonded to high performance **coated glass facers (CGF)**. ReadyFlash features a dark CGF to accelerate adhesive flash-off on one side of the insulation board and a light CGF to slow down adhesive flash-off on the other. Ideal for use in adhered membrane systems. Provides a direct to combustible deck UL Class A fire rating at 1" thickness.

Sizes: 4' x 4' and 4' x 8'

Thicknesses: ½" to 4½"

Compressive Strengths: 20 and 25psi



SecurShield HD

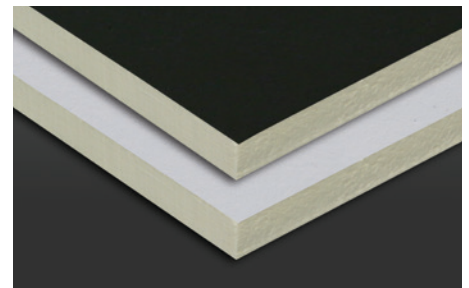
ReadyFlash
TECHNOLOGY

A rigid roof insulation panel composed of ½" high-density, closed-cell polyisocyanurate foam core bonded to a premium performance **coated glass facer (CGF)** specifically designed for use as a cover board. ReadyFlash features a dark CGF to accelerate adhesive flash-off on one side of the insulation board and a light CGF to slow down adhesive flash-off on the other. Provides 5 times the R-value at one-fifth the weight of traditional gypsum cover boards. Achieves a UL Class A fire rating direct to combustible deck.

Sizes: 4' x 4' and 4' x 8'

Thickness: ½"

Compressive Strength: 109psi max



Insulation Reference

SecurShield HD Plus

A rigid roof insulation panel composed of a ½" high-density, closed-cell polyisocyanurate foam core bonded to premium-performance coated glass facers (CGF). SecurShield HD Plus is specifically designed for use as a cover board. Provides an **FM 1-90 wind uplift rating with only 8 fasteners** per 4' x 8' board.

Sizes: 4' x 4' and 4' x 8'

Thicknesses: ½"

Compressive Strengths: 109psi max



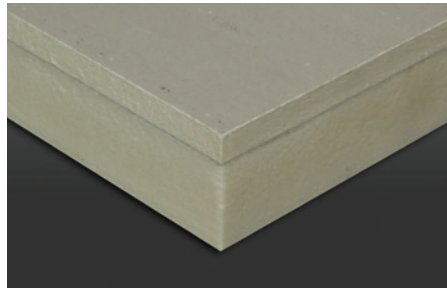
SecurShield HD Composite

A unique composite insulation panel comprised of ½" high-density polyiso cover board bonded during the manufacturing process to SecurShield rigid polyiso roofing insulation. Eliminates the need for a separate cover board, reduces inter-ply adhesives and saves labor on the roof. **A single product solution.**

Sizes: 4' x 4' and 4' x 8'

Thicknesses: 1½" to 4½"

Compressive Strengths: 20 psi (SecurShield base layer) and 109psi max (SecurShield HD cover board)



SecurShield NH

A Living Building Challenge (LBC) "Red List Free" rigid roof insulation panel composed of a closed-cell polyisocyanurate foam core bonded on each side to premium performance coated glass facers (CGF). SecurShield NH contains **zero halogenated flame retardants**.

Sizes: 4' x 4' and 4' x 8'

Thickness: ½" to 4"

Compressive Strength: 20psi



StormBase® Polyiso

A rigid roof insulation composite panel composed of a closed-cell polyisocyanurate foam core bonded to a glass-reinforced felt (GRF) facer on one side and ¾" **oriented strand board (OSB)** on the other.

Sizes: 4' x 4' (routed 3 sides) and 4' x 8' (routed 4 sides)

Thicknesses: 1½" to 4½"

Standard Thickness: 1½", 2", 2½", 3", and 4"



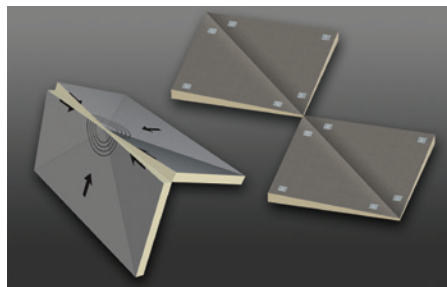
Tapered Accessories

Hinged Target Sumps and Pre-Cut Hips and Valleys ship ready to install, **require no field cuts and save valuable time on the roof**. Multiple thicknesses and slopes available to accommodate specific job conditions with no waste, thus reducing disposal fees.

Sizes: 4' x 4' (Hips & Valleys) and 8' x 8' (Hinged Sumps)

Thicknesses: ½" to 4½" (multiple layers utilized for increased thicknesses)

Compressive Strengths: 20 and 25psi



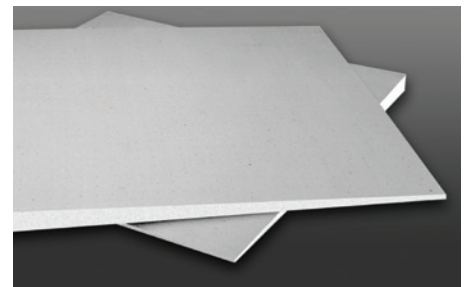
Tapered Polyiso

A sloped, rigid roof insulation panel composed of a closed-cell polyisocyanurate foam core bonded to a coated glass or fiber-reinforced facer. Designed to promote **positive drainage and prevent ponding water**.

Sizes: 4' x 4'

Thicknesses: ½" to 4½" (multiple layers utilized for increased thicknesses)

Compressive Strengths: 20 and 25psi



EPDM Systems Reference

| | BALLASTED | ADHERED | MECHANICALLY FASTENED | FLEECEBACK | AFX | COVERAGE RATE OR AVAILABLE SIZES | PACKAGING |
|---|-----------|---------|-----------------------|------------|-----|---|--|
| MEMBRANES | | | | | | | |
| Sure-Seal Non- Reinforced EPDM | ✓ | | | | | 45, 60, 90-mil | 10'-50' x 50'-200' |
| Sure-Seal SAT (Self-Adhering Technology) Non-Reinforced EPDM | | ✓ | | | | 60-mil | 10' x 50' or 10' x 100' |
| Sure-White Non-Reinforced White EPDM | | ✓ | | | | 60, 90-mil | 10', 16.5' or 20' x 100' |
| Sure-White SAT (Self-Adhering Technology) Non-Reinforced EPDM | | ✓ | | | | 60-mil | 10' x 50' or 10' x 100' |
| Sure-Tough Reinforced EPDM | | ✓ | ✓ | | | 45, 60, 75-mil | 5', 6.5', 8 or 10' x 100' |
| Sure-Tough SAT (Self-Adhering Technology) Reinforced EPDM | | ✓ | | | | 60-mil | 10' x 50' or 10' x 100' |
| Sure-Seal Non-Reinforced EPDM | ✓ | ✓ | | | | 60-mil, 90-mil | 7'- 50' x 50'- 200' |
| Sure-Tough Reinforced EPDM | ✓ | ✓ | ✓ | | | 60-mil, 75-mil | 6.5'- 10' x 50'- 100' per roll |
| Sure-Seal FleeceBACK EPDM | | ✓ | | ✓ | | 100-mil, 115-mil, 145-mil | 5' x 40', 10' x 50', 10' x 100' |
| Sure-White FleeceBACK EPDM | | ✓ | | ✓ | | 100-mil, 115-mil, 145-mil | 5' x 40', 10' x 50', 10' x 100' |
| Sure-Seal FleeceBACK AFX EPDM | | ✓ | ✓ | ✓ | ✓ | 90-mil, 105-mil | 4'.5" x 50', 10' x 50', 10' x 100' |
| Sure-White FleeceBACK AFX EPDM | | ✓ | ✓ | ✓ | ✓ | 105-mil | 4'.5" x 50' |
| FleeceBACK RL™ EPDM | | ✓ | | ✓ | | 115-mil | 10' x 50', 10' x 100' |
| ADHESIVES, PRIMERS, & SEALANTS | | | | | | | |
| Low-VOC Primer * | ✓ | ✓ | ✓ | ✓ | ✓ | 250 sq. ft. per gallon (dusty membrane) | (6) 1-gallon cans per case |
| HP-250 Primer * | ✓ | ✓ | ✓ | ✓ | ✓ | 250 sq. ft. per gallon (dusty membrane) | (6) 1-gallon cans per case |
| 90-8-30A EPDM Bonding Adhesive | | ✓ | | | | 60 sq. ft. per gallon | 5-gallon pail |
| Flexible FAST Adhesive | | | | ✓ | | See PDS | Multiple |
| Aqua Base 120 Bonding Adhesive | | ✓ | | ✓ | | 100-120 sq. ft. per gallon | 5-gallon pail |
| Cold Applied Adhesive | | | | | ✓ | 67 sq. ft. per gallon | 5-gallon pail |
| EPDM X-23 Low-VOC Bonding Adhesive | | ✓ | | | | 60 sq. ft. per gallon | 5-gallon pail |
| Low-VOC Bonding Adhesive | | ✓ | | | | 60 sq. ft. per gallon | 5-gallon pail |
| Sure-Seal Lap Sealant | ✓ | ✓ | ✓ | ✓ | ✓ | 22' per tube | 25 tubes per carton |
| Sure-White Lap Sealant | ✓ | ✓ | ✓ | ✓ | ✓ | 22' per tube | 25 tubes per carton |
| One-Part Pourable Sealer (Black/White) | ✓ | ✓ | ✓ | ✓ | ✓ | 488 in ³ per gallon | (4) ½-gallon pouches/bucket |
| Weathered Membrane Cleaner | ✓ | ✓ | ✓ | ✓ | ✓ | 400 sq. ft. per gallon | (2) 1-gallon cans or (1) 5-gallon pail |
| Water Cut-Off Mastic | ✓ | ✓ | ✓ | ✓ | ✓ | 10' per tube | 25 tubes per carton |
| Pressure-Sensitive SecurTAPE | ✓ | ✓ | ✓ | ✓ | ✓ | 3" x 100', 6" x 100' | 3" – 4 rolls per carton, 6" – 2 rolls per carton |
| CAV-GRIP III | | ✓ | | ✓ | | See Product Data Sheet | 40# aerosol cylinder 85# aerosol cylinder |

* Available in CAV-PRIME pressurized cylinders.

EPDM Systems Reference

| | BALLASTED | ADHERED | MECHANICALLY FASTENED | FLEECEBACK | AFX | COVERAGE RATE OR AVAILABLE SIZES | PACKAGING |
|--|-----------|---------|-----------------------|------------|-----|---|---|
| FLASHINGS | | | | | | | |
| Pressure-Sensitive Elastoform Flashing (Black/White) | ✓ | ✓ | ✓ | ✓ | ✓ | 6" x 100', 9" x 50', 12" x 50' | 6" - 2 rolls per carton 9" & 12" - 1 roll per carton |
| Pressure-Sensitive Cured Coverstrip (Black/White) | ✓ | ✓ | ✓ | ✓ | ✓ | 6" x 100', 9" x 100', 12" x 50' | 6" - 2 rolls per carton 9" & 12" - 1 roll per carton |
| Pressure-Sensitive Overlayment Strip (Black) | ✓ | ✓ | ✓ | ✓ | ✓ | 6" x 100', 9" x 100' | 6" - 2 rolls per carton 9" - 1 roll per carton |
| Pressure-Sensitive RUSS (Black/White) | ✓ | ✓ | ✓ | | | 6" x 100', 9" x 100' | 6" - 2 rolls per carton 9" - 1 roll per carton |
| Pressure-Sensitive Pipe Seals (Black/White) | ✓ | ✓ | ✓ | ✓ | ✓ | ½" - 3", 1" - 6" | 10 per carton |
| Pressure-Sensitive Pourable Sealer Pockets (Black/White) | ✓ | ✓ | ✓ | ✓ | ✓ | Black - 4", 6", 8" White - 6" only | 12 per carton |
| Pressure-Sensitive Inside/ Outside Corners (Black/White) | ✓ | ✓ | ✓ | ✓ | ✓ | 7" x 9" | 20 per carton |
| Pressure-Sensitive Curb Flashing (Black/White) | ✓ | ✓ | ✓ | ✓ | ✓ | 20" x 50', with 6" tape | 1 roll per carton |
| Fully Pressure-Sensitive Curb Flashing (Black) | ✓ | ✓ | ✓ | ✓ | ✓ | 20" x 50' | 1 roll per carton |
| Pressure-Sensitive T-Joint Covers (Black) | ✓ | ✓ | ✓ | ✓ | ✓ | 6" & 12" | 20 per carton |
| Pipe Supports | ✓ | ✓ | ✓ | ✓ | ✓ | Mini: ½" - 1½" Small: ¾" - 2" Large: 2½" - 5" | Mini & small 20 per carton; large 10 per carton |
| ACCESSORIES | | | | | | | |
| Pressure-Sensitive Molded Walkway Pads (Black/White) | | ✓ | ✓ | ✓ | ✓ | 30" x 30" | 50/pallet |
| Interlocking Rubber Pavers (Black/TerraCotta) | ✓ | ✓ | ✓ | ✓ | ✓ | 24" x 24" | Single paver |
| HP Protective Mat | ✓ | | | | | 15' x 300' | Per roll |
| EPDM Expansion Joint-Edge | ✓ | ✓ | ✓ | ✓ | ✓ | 25 ft. | 25 LF per carton |
| EPDM Expansion Joint-Field | ✓ | ✓ | ✓ | ✓ | ✓ | 25 ft. | 25 LF per carton |

TPO Systems Reference

| | MECHANICALLY FASTENED | ADHERED | FLEECEBACK | AFX | COVERAGE RATE OR AVAILABLE SIZES | PACKAGING |
|--|-----------------------|---------|---------------------------|-----|--|---|
| MEMBRANES | | | | | | |
| Sure-Weld TPO** | ✓ | ✓ | | ✓ | 45-mil, 60-mil, 80-mil | 4', 6', 8', 10', and 12' x 100' roll |
| Sure-Weld SAT (Self-Adhering Technology) TPO** | | ✓ | | | 60-mil, 80-mil | 10' x 50', 10' x 100', 12' x 100' |
| Sure-Weld FleeceBACK TPO | ✓ | ✓ | ✓ | | 100-mil, 115-mil, 135-mil | 6' x 100', 12' x 75', 6' x 75', 12' x 50', 12' x 100' |
| Sure-Weld FleeceBACK AFX TPO | ✓ | ✓ | ✓ | ✓ | 120-mil, 135-mil, 155-mil | 6' x 75', 12' x 75' |
| FleeceBACK RL TPO | | ✓ | ✓ | | 115-mil | 10' x 50', 10' x 100' |
| ADHESIVES, PRIMERS, & SEALANTS | | | | | | |
| Sure-Weld Bonding Adhesive | | ✓ | | | 60 sq. ft. per gallon | 5-gallon pail |
| CAV-GRIP III Adhesive/Primer | | ✓ | ✓ Wall Attachment Only | | See Product Data Sheet | 40# aerosol cylinder 85# aerosol cylinder |
| Aqua Base 120 Bonding Adhesive | | ✓ | ✓ | | 100-120 sq. ft. per gallon | 5-gallon pail |
| Flexible FAST Adhesive | | | ✓ | | See Product Data Sheet | Multiple |
| Low-VOC Bonding Adhesive | | ✓ | | | 60 sq. ft. per gallon | 5-gallon pail |
| Weathered Membrane Cleaner | ✓ | ✓ | ✓ | ✓ | 400 sq. ft. per gallon | 1-gallon or 5-gallon pail |
| Cold Applied Adhesive | | | | ✓ | 50-67 sq. ft. per gallon | 5-gallon pail |
| White One-Part Sealant | ✓ | ✓ | ✓ | ✓ | 122 cubic inches per .5 gallon | (4) ½-gallon pouches/bucket |
| TPO Primer (Standard and Low-VOC)* | ✓ | ✓ | ✓ | ✓ | 200 to 250 sq. ft. per gallon | (6) 1-gallon cans/carton |
| TPO Clear Cut Edge Sealant | ✓ | ✓ | ✓ | ✓ | 225 linear ft. per bottle | 6 bottles per carton |
| Universal Single-Ply Sealant | ✓ | ✓ | ✓ | ✓ | 25 ft. per tube (½" bead) | 24 tubes, 10.1 fl. oz. each |
| FLASHINGS | | | | | | |
| TPO Molded Pipe Seals (White/Gray/Tan) | ✓ | ✓ | ✓ | ✓ | ¾" to 8" | 8 per carton |
| TPO PS Coverstrip 6" x 100' (White/Gray/Tan) | ✓ | ✓ | ✓ | ✓ | 6" x 100' | 2 rolls per carton |
| TPO Non-Reinforced Flashing (White/Gray/Tan) | ✓ | ✓ | ✓ | ✓ | 12" x 50' & 24" x 50' | 1 per carton |
| TPO Split Pipe Seals (White/Gray/Tan) | ✓ | ✓ | ✓ | ✓ | 1" to 6" | 8 per box |
| TPO Square Tubing Wraps (White/Gray/Tan) | ✓ | ✓ | ✓ | ✓ | 3", 4", 5", 6" | 8 per box |
| TPO Inside Corners (White/Gray/Tan) | ✓ | ✓ | ✓ | ✓ | | 12 per bag |
| TPO Outside Corners (White/Gray/Tan) | ✓ | ✓ | ✓ | ✓ | | 12 per bag |
| TPO Universal Corners (White/Gray/Tan) | ✓ | ✓ | ✓ | ✓ | | 20 per box |
| TPO Curb Wrap Corners (White) | ✓ | ✓ | ✓ | ✓ | 7", 13", 19" | 12 per box |
| TPO Molded Sealant Pockets (White/Gray/Tan) | ✓ | ✓ | ✓ | ✓ | 7.5" to 11" x 6" oval | 5 per carton |
| TPO Sealant Pocket Extensions (White) | ✓ | ✓ | ✓ | ✓ | 14" overall length; 10" installed length | 10 per carton |
| 6" TPO PS RUSS | ✓ | ✓ | | | 6" x 100' | 2 rolls |
| 10" TPO PS RUSS | ✓ | | | | 10" x 100' | 1 roll |
| TPO T-Joint Covers (White/Gray/Tan) | ✓ | ✓ | ✓ | ✓ | 4.5" diameter | 100 per box |
| | MECHANICALLY FASTENED | ADHERED | FLEECEBACK | AFX | COVERAGE RATE OR AVAILABLE SIZES | PACKAGING |

*Available in CAV-PRIME pressurized cylinders.

**Carlisle's Sure-Weld TPO membranes available with APEEL Protective Film.

TPO Systems Reference

ACCESSORIES

| | | | | | | |
|---|---|---|---|---|-------------------------|-------------------|
| TPO Walkway Rolls (White/Gray/Tan) | ✓ | ✓ | ✓ | ✓ | 34" x 50' roll | Per roll |
| TPO Crossgrip Walkway (White/Gray/Tan) | ✓ | ✓ | ✓ | ✓ | 3' x 33' (.91m x 10.1m) | |
| TPO Coated Metal (White, Gray, Tan, Slate Gray, Patina Green, Terra Cotta, Medium Bronze, Rock Brown) | ✓ | ✓ | ✓ | ✓ | 4' x 10' | 10 or 25 per skid |

FASTENERS

| | | | | | | |
|-------------------------------------|---|---|---|---|--------------------------|------------------------|
| Insulfast Insulation Fasteners | ✓ | ✓ | ✓ | ✓ | 1 $\frac{1}{8}$ " to 8" | 1000 per package |
| 3" Steel Insulation Plate | ✓ | ✓ | ✓ | ✓ | 3" diameter | 1000 per package |
| HP Fasteners (Insulation) | | ✓ | ✓ | | 1 $\frac{1}{4}$ " to 15" | 500-1000 per package |
| HP-X Fasteners (Membrane) | ✓ | | | | 2" to 22" | 500-1000 per package |
| HP-X ASAP Fasteners (Membrane) | ✓ | | | | 2" to 16" | 150 to 250 per package |
| Piranha Plates | ✓ | | | | 2 $\frac{3}{8}$ " | 1000 per package |
| HP-XTRA Fasteners (Steel Deck Only) | ✓ | | | | 2" to 12" | 250-500 per bucket |
| TPO RhinoBond Plates | ✓ | | | | 3" diameter | 500 per package |
| PVC RhinoBond Plates | ✓ | | | | 3" diameter | 500 per package |

PVC Systems Reference

| | MECHANICALLY FASTENED | ADHERED | FLEECEBACK | COVERAGE RATE OR AVAILABLE SIZES | PACKAGING |
|---|-----------------------|---------|----------------------|---|---|
| MEMBRANES | | | | | |
| Sure-Flex PVC*** | ✓ | ✓ | | 50-mil, 60-mil 80-mil | 40.5", 5', 81", and 10' x 100' 40.5", 5', 81", and 10' x 75' |
| Sure-Flex KEE HP*** | ✓ | ✓ | | 50-mil, 60-mil 80-mil | 40.5", 5', 81", and 10' x 100' 40.5", 5', 81", and 10' x 75' |
| Sure-Flex PVC FleeceBACK | ✓ | ✓ | ✓ | 115-mil 135-mil | 10' x 100' 10' x 75' |
| Sure-Flex KEE HP FleeceBACK | ✓ | ✓ | ✓ | 105-mil, 115-mil 135-mil | 10' x 100' 10' x 75' |
| FleeceBACK RL PVC | | ✓ | ✓ | 115-mil | 10' x 50', and 10' x 100' |
| ADHESIVES, PRIMERS, & SEALANTS | | | | | |
| CAV-GRIP PVC Adhesive | | ✓ | Wall Attachment Only | Standard - 750 sq. ft. Large - 1,500 sq. ft. | 41# aerosol cylinder 90# aerosol cylinder |
| Low-VOC PVC Bonding Adhesive | | ✓ | | 60 sq. ft. per gallon | 5-gallon pail |
| HydroBond PVC Water-Based Adhesive | | ✓ | ✓ | 100 and 135 sq. ft. per gallon | 5-gallon pail |
| Flexible FAST Adhesive | | | ✓ | See PDS | See PDS |
| One Part Pourable Sealer (White) | ✓ | ✓ | ✓ | 122 cubic inches per .5 gallon | (4) ½-gallon pouches/bucket |
| PVC Cut-Edge Sealant (not required) | ✓ | ✓ | ✓ | 225' to 275' (1/8" bead) | (12) 16 oz. bottles/carton |
| PVC and KEE HP Membrane Cleaner | ✓ | ✓ | ✓ | 400 sq. ft. per gallon | 5-gallon pail |
| LOW-VOC PVC Step 1 Activator | ✓ | ✓ | ✓ | 250–300 sq. ft. per gallon | 2 - One gallon cans |
| LOW-VOC PVC Step 2 Primer | ✓ | ✓ | ✓ | 700 sq. ft. per gallon | 2 - One gallon cans |
| PVC Step 2 Primer | ✓ | ✓ | ✓ | 200–250 sq. ft. per gallon | 2 - One gallon cans |
| FLASHINGS | | | | | |
| PVC Pressure-Sensitive (PS) Cover Strip (White/Gray/Tan) | ✓ | ✓ | ✓ | 6' x 100' | 2 rolls per box |
| PVC Curb Wrap Corners (White/Gray/Tan) | ✓ | ✓ | ✓ | 7", 13", 19" | 12 per box |
| PVC & KEE HP Coverstrip (White/Gray/Tan) | ✓ | ✓ | ✓ | 8" x 75' | 1 roll per carton |
| PVC Flashing (White/Gray and White/Tan) | ✓ | ✓ | ✓ | 12", 24" x 50' | 1 per carton |
| PVC T-Joint Covers (White/Gray/Tan) | ✓ | ✓ | ✓ | 4.5" diameter | 100 per box |
| PVC Inside Corners (White/Gray/Tan) | ✓ | ✓ | ✓ | | 12 per bag |
| PVC Outside Corners (White/Gray/Tan) | ✓ | ✓ | ✓ | | 12 per bag |
| PVC Universal Corners (White/Gray/Tan) | ✓ | ✓ | ✓ | | 20 per box |
| PVC Molded Sealant Pockets (White) | ✓ | ✓ | ✓ | 7½" x 6" | 5 per carton |
| PVC Molded Pipe Seals (White/Gray/Tan) | ✓ | ✓ | ✓ | ¾" to 8" diameter pipe | 8 per box |
| PVC Split Pipe Seals (White/Gray/Tan) | ✓ | ✓ | ✓ | 1" to 6" diameter pipe | 8 per box |
| PVC Square Tubing Wraps (White/Gray/Tan) | ✓ | ✓ | ✓ | 3", 4", 6" | 8 per box |
| ACCESSORIES | | | | | |
| PVC Coated Metal (White, Gray, Tan, Light Gray, Slate Gray) | ✓ | ✓ | ✓ | 4' x 10' sheet | 10 sheet/pallet |
| PVC Walkway Rolls (Gray) | ✓ | ✓ | ✓ | 36" x 60' (91.4 cm x 18.3 m) | 14 rolls/skid |
| PVC Crossgrip Walkway (White/Gray/Yellow) | ✓ | ✓ | ✓ | 3' x 33' (.91m x 10.1m) | |

***Carlisle's Sure-Flex PVC and KEE HP 60-mil white membranes available with APEEL Protective Film.

EXPERIENCE THE CARLISLE DIFFERENCE



800-479-6832 | P.O. Box 7000 | Carlisle, PA 17013 | Fax: 717-245-7053 | www.carlisesyntec.com

03.01.24 © 2024 Carlisle.
REPRINT CODE: 606370 CST-2639 - "Carlisle SynTec Systems Product Reference Guide"

Carlisle, Sure-Flex, Sure-White, Sure-Seal, Sure-Weld, Sure-Tough, Sure-Tite, HP-X Fastener, InsulFast, Piranha Plate, SecurTAPE, SAT, FAST, FAT, HydroBond, CAV-GRIP, SecurShield, InsulBase, StormBase, X-Tenda Coat, VapAir Seal, RL, and FleeceBACK are trademarks of Carlisle. Hinged Target Sump is a trademark of Hunter Panels. InsulFoam, R-Tech and InsulLam are trademarks of Insulfoam. RhinoBond is a registered trademark of OMG, Inc. LEED is a registered trademark of the U.S. Green Building Council. SECUROCK is a trademark of USG Corporation. DensDeck and DensDeck Prime are trademarks of Georgia Pacific. Galvalume is a trademark of Bethlehem Steel Corp.