



Setting the Standard for Excellence

Carlisle SynTec Systems, the flagship division of Carlisle Construction Materials (CCM), is the largest supplier of commercial roofing products in the world.

Carlisle produces high-performance EPDM, TPO, PVC, and FleeceBACK® single-ply roofing membranes, a full line of polyiso, expanded polystyrene insulation, plates/fasteners, adhesives, air and vapor barriers, and edge metal.

With more than 60 years of manufacturing experience and billions of square feet of roofing materials sold, Carlisle continues to lead the industry by providing the best products, services, and warranty options available today.

CCM MANUFACTURING CAPACITY

3  EPDM Manufacturing Lines

6  TPO Manufacturing Lines

1  PVC Manufacturing Line

9  Polyisocyanurate Manufacturing Lines

20  EPS Manufacturing Lines

1  Adhesive Manufacturing Line

1  Tape Manufacturing Line

Product Reference Guide

TABLE OF CONTENTS

Training and Education Opportunities	1
Tapered Department.....	2
Warranty Services	2
Sure-Weld® TPO Roofing Systems	3
Sure-Flex™ PVC and KEE HP Roofing Systems.....	5
Sure-Seal® EPDM, Sure-White® EPDM, and Sure-Tough™ EPDM Roofing Systems	7
FleeceBACK® Roofing Systems	9
RapidLock Systems	10
EPDM Accessories	11
Thermoplastic Accessories	13
Fasteners & Plates	19
Adhesives, Primers, and Sealants	23
Coatings	29
Wind Vented Attachment System	32
Air & Vapor Barriers.....	33
Edge Metal	34
Conductive Mediums for Electronic Leak Detection	34
Rooftop Component Anchoring	35
Insulation	36
Cover Board	39
EPDM Membrane Product Codes	43
TPO Membrane Product Codes	45
PVC Membrane Product Codes	47
FleeceBACK Membrane Product Codes	49
Plates and Fasteners Product Codes	51
Insulation Product Codes	54
Cover Board Product Codes	59

Disclaimer: All product information in this guide is subject to change without notice. While Carlisle makes every effort to provide the most accurate, up-to-date information, occasionally, one or more items in our guide may be mislabeled. For complete information regarding warranty requirements, minimum order quantities, price variations, installation requirements, and product-specific performance criteria, please refer to the appropriate supporting materials, including the Price Book, Product Data Sheets, and Specifications and Details by visiting the Carlisle SynTec Systems website at www.carlisesyntec.com.

Training and Education Opportunities

Carlisle believes strongly in the value of education and provides many training opportunities throughout the year — both in person and online — for our Authorized Applicators, Manufacturer's Representatives, Distributors, and design professionals.

State-of-the-Art Training & Education Center

Carlisle's 68,000-square-foot Training & Education Center (TEC), located in Carlisle, Pennsylvania, is the commercial roofing industry's first and only dedicated training facility and features:

- » A 135-seat theater-style auditorium
- » A combination of meeting, training, and administrative spaces
- » State-of-the-art audio and video equipment
- » An interactive touchscreen video wall
- » Five indoor mock-up training areas for hands-on learning in a comfortable setting



CARLISLE SYNTEC SYSTEMS
C.R.E.W.
CONTINUING ROOFING
EDUCATION & WORKSHOPS

Spray Booth

This one-of-a-kind environmental chamber allows materials to be applied in realistic field conditions.

- » Temperature range of 0°F – 180°F
- » External viewing windows for larger groups
- » 16' x 32' interior working area



Tapered Department

The Tapered Department takes the mystery out of tapered insulation with clear designs, streamlined quotes, on-site consultations, and education by the industry's best.

Estimating/Designing

- » Nationwide coverage with centrally located resources
- » Fast and accurate quotations
- » Architectural design assistance utilizing Revit

Field Assistance

- » Pre-construction consultation & project start-ups
- » On-site problem solving
- » Installation training and assistance

Education

- » AIA accredited presentations
- » Tapered training for beginners and seasoned estimators
- » Contractor and sales force product presentation



Warranty Services

Carlisle SynTec warranties provide industry-leading protection, covering the repair of leaks from a variety of causes — including accidental membrane punctures, hail up to three inches in diameter, and winds of up to 120 mph – and offer terms of up to 30 years. All warranted roofs are thoroughly inspected by a field service representative to ensure every detail of the installation meets Carlisle's stringent specifications. With a Carlisle warranty, you can feel confident that your building has long-term protection.

Products and Design

Manufacturer Capabilities

Carlisle SynTec has put together a Manufacturer Capabilities Sell Sheet.

Design Advisories

Carlisle SynTec Design Advisories provide a summary of all recent updates and changes to Carlisle's specifications and details.

Warranty Quick Table

Carlisle SynTec has put together a quick reference table for the different warranties available on our systems.

Roof Selector

Which system is right for your client? Finding the right roof for any building is easy with our Roof Selector!

Scan here to
learn more.



Sure-Weld TPO Roofing Systems

Carlisle SynTec Systems' Sure-Weld TPO membrane is comprised of three layers – a TPO polymer base, a strong, polyester-reinforced fabric center (scrim), and a tough thermoplastic polyolefin compounded top ply. Because the top ply is the most vital membrane component for long-term weathering characteristics, Carlisle manufactures all of its TPO membranes with an industry-leading thicker top ply over scrim. Sure-Weld TPO contains the OctaGuard XT™ weathering package, a combination of ingredients that allow the membrane to stand up to the toughest weather conditions and stand the test of time.

TPO Product Offering*

Thicknesses: 45-, 60-, 80-mil

Widths: 4', 5', 6', 8', 10', 12', and 16'

Standard Colors: White, Gray, Tan

Special Colors: Slate Gray, Medium Bronze, Rock Brown, Terra Cotta, Patina Green

**For a full product listing with product codes see page 45*

System Options

- » Mechanically Fastened
- » Induction Welded
- » Fully Adhered
- » SAT (Self-Adhering Technology)
- » Metal Retrofit
- » Vent Secured

16' TPO

Carlisle's introduction of the industry's first ever 16'-wide TPO sheet brings labor savings and efficiency to get more done in less time. With fewer rolls to load on the roof, less time spent positioning and kicking out rolls, and fewer seams to weld, 16'-wide TPO is the fastest and most efficient way to install adhered and induction welded TPO roofs.



Sure-Weld TPO with APEEL™ Protective Film

Carlisle's patented APEEL Protective Film guards the surface of TPO membrane from scuffs and dirt accumulation during installation, eliminating the need to clean the roof once the project is complete. Durable and easy to remove, APEEL Protective Film helps save time and labor, improves aesthetics, and increases reflectivity. Sure-Weld TPO membrane with APEEL Protective Film is ideal for re-roofing, recover, and new construction projects.



Sure-Weld TPO with SeamShield[™] Productive Film

Carlisle's patented SeamShield Technology is a factory-applied protective film applied to both the top and bottom lap area of TPO sheets, serving as a safeguard for the welded areas of the TPO sheet throughout the installation process. SeamShield is crucial in shielding the top and bottom ply seams from bonding adhesives and construction-generated dirt. This ensures a consistent factory-clean seam during the welding process.



Sure-Flex PVC and KEE HP Roofing Systems

PVC (polyvinyl chloride) single-ply membranes have provided dependable protection and proven performance since the 1960s, making them a popular and economical choice among roofing consultants and specifiers. PVC's resistance to chemicals, grease, fire, and punctures make it an ideal choice for a wide variety of buildings. Now Carlisle has taken a proven performer and improved its integrity, flexibility, and weatherability.

Sure-Flex KEE HP PVC utilizes DuPont® Elvaloy KEE, a resin modifier that provides permanent flexibility, increased UV resistance, enhanced chemical resistance, and improved long-term weathering. This enhancement also helps the membrane resist dirt pickup, keeping the roof surface cleaner over time. Sure-Flex KEE HP PVC is ideal for roofing applications exposed to harsh chemicals and conditions such as acid rain, grease, air-conditioning coolants, and intense sunlight.

PVC Product Offering*

Thicknesses: 50-, 60-, 80-mil

Widths: 40.5", 5', 81", 10'

Standard Colors: White, Gray, Tan, Light Gray, Slate Gray

KEE Product Offering

Thicknesses: 50-, 60-, 80-mil

Widths: 5' and 10'

Standard Colors: White, Gray, Tan, Light Gray

**For a full product listing with product codes see page 47*

System Options

- » Mechanically Fastened
- » Induction Welded
- » Fully Adhered
- » Metal Retrofit
- » Vent Secured

Sure-Flex PVC Pressure-Sensitive Cover Strip

Sure-Flex PVC Pressure-Sensitive (PS) Cover Strip offers a fast installation that simplifies sealing edge metal, especially Kynar-coated surfaces, while allowing building owners the design flexibility to choose their preferred edge metal color. Compatible with both PVC and KEE HP membranes, this cover strip is easy to install and provides long-term durability and a watertight seal that performs reliably in harsh rooftop environments.



CAV-GRIP® PVC

Revolutionize your adhesive needs with CAV-GRIP PVC Adhesive. This versatile solution is perfect for securing PVC bareback membranes to various horizontal surfaces and vertical walls (excluding KEE or KEE HP bareback membranes) and achieving exceptional adhesion when attaching FleeceBACK membranes to vertical walls. CAV-GRIP PVC's cutting-edge, low-VOC formula ensures a robust bond and rapid drying across a wide temperature range.



Sure-Flex PVC HydroBond Water-Based Adhesive

Carlisle's HydroBond PVC Water-Based Adhesive offers a fast, one-sided wet lay-in application that saves time and labor while providing a strong, long-lasting bond. It's compatible with bareback PVC and all FleeceBACK membranes on both porous and non-porous substrates and can be roller-applied easily without HAZMAT restrictions. HydroBond is VOC-compliant and meets stringent environmental regulations, making it a safe and efficient solution for your next PVC project.



Sure-Seal EPDM, Sure-White EPDM, and Sure-Tough EPDM Roofing Systems

Originally developed in the 1950s, EPDM (Ethylene Propylene Diene Terpolymer) is a synthetic rubber known for its elasticity, superior physical characteristics, and uncompromising durability. In 1961, Carlisle revolutionized the commercial roofing industry with the introduction of its Sure-Seal EPDM single-ply membrane.

Since then, the Carlisle name has been synonymous with the most dependable and longest-lasting single-ply roof systems on the market and the trusted choice of consultants, contractors, architects, and building owners for both new construction and replacement applications.

EPDM Product Offering*

Thicknesses: 45-, 60-, 75-, 90-mil

Widths: 5', 6.5', 7', 8', 10', 12', 15', 16.5', 20', 25', 30', 40', and 50'

Standard Colors: White, Gray, Black

**For a full product listing with product codes see page 43*

System Options

- » Mechanically Fastened
- » Fully Adhered
- » SAT (Self-Adhering Technology)
- » Ballasted
- » Vent Secured

Sure-Seal Cool Gray EPDM

This Carlisle-exclusive EPDM color is the ideal choice for markets with balanced heating and cooling energy needs. The Cool Gray EPDM color provides reflectivity for summer cooling needs, while also providing some winter heat gains and a dry-down effect to minimize potential condensation issues within the roofing assembly. The medium gray color has less glare, dries the roof faster, and hides dirt pick-up better than highly reflective white membranes – all without sacrificing performance.



Sure-Seal and Sure-White SAT EPDM

Carlisle's SAT EPDM membranes deliver the superior weatherability and dependability of non-reinforced EPDM while providing significant labor savings on the rooftop. Our Self-Adhering Technology provides up to an 80% productivity increase while minimizing disruption to building occupants.



Sure-Seal[®] EPDM
Roofing Systems

Sure-White[®] EPDM
Roofing Systems

Sure-Tough[™] EPDM
Roofing Systems

Post-Consumer Recycled Content

Carlisle's Sure-Tough black EPDM membrane features an impressive 5% post-consumer recycled content and 5% pre-consumer recycled content, making it one of the most sustainable and environmentally friendly membranes in the commercial roofing industry and the only EPDM on the market that incorporates post-consumer recycled content. Sure-Tough EPDM membranes get their strength from a strong polyester reinforcing scrim sandwiched between two plies of Carlisle's time-tested EPDM rubber. This reinforcement more than doubles the puncture resistance compared to non-reinforced membranes.



FleeceBACK Roofing Systems

Carlisle's FleeceBACK systems are preferred for new construction and re-roofing projects and are particularly well-suited for critical facilities that require superior protection against severe weather, as well as Roof Garden and solar applications. Composed of Carlisle's EPDM, TPO, PVC, or KEE HP membranes adhered with a strong 55-mil fleece, FleeceBACK systems provide long-term protection against high winds, hail, and punctures. FleeceBACK membranes are installed using Flexible FAST™ Adhesive for a VOC-free, quiet, low-odor, non-penetrating application and a roof system that offers superior durability, wind uplift, and hail resistance.

FleeceBACK EPDM and EPDM RL™ Product Offering*

Thicknesses: 100-, 115-, 145-mil

Widths: 5' and 10'

Standard Colors: Black and White

FleeceBACK TPO and TPO RL Product Offering*

Thicknesses: 100-, 115-, and 135-mil

Widths: 6', 10', and 12'

Standard Colors: White, Gray, Tan

Specialty Colors: Medium Bronze, Rock Brown, Terra Cotta, Slate Gray, Patina Green

FleeceBACK PVC, KEE and PVC RL Product Offering*

Thicknesses: 105-, 115-, 135-mil

Widths: 5' and 10'

Standard Colors: White, Gray, Tan, Light Gray, Slate Gray

**For a full product listing with product codes see page 49*

System Options

- » Mechanically Fastened
- » Fully Adhered
- » RapidLock (Hook and Loop)

Sure-White EPDM RL

Sure-White RapidLock (RL) Roofing Systems are a revolutionary method of membrane attachment resulting in a fully adhered membrane without the use of adhesives. This innovative system utilizes VELCRO® Brand Securable Solutions along with FleeceBACK RL EPDM to achieve performance equal to traditional adhered single-ply systems. FleeceBACK RL EPDM is used in conjunction with an approved RapidLock insulation board resulting in a VOC- and odor-free attachment method with no temperature restrictions. Significant labor savings are achieved due to the simplicity of the system and its ease of installation.



5' FleeceBACK PVC and KEE HP

5' FleeceBACK PVC and KEE HP are precision-engineered with a hot-melt extrusion process for total scrim encapsulation and deliver exceptional durability and reflectivity. This premium membrane offers outstanding resistance to chemicals, acids, bases, and even harsh contaminants like restaurant oils and greases, making it the ideal choice for high-performing roofing solutions.

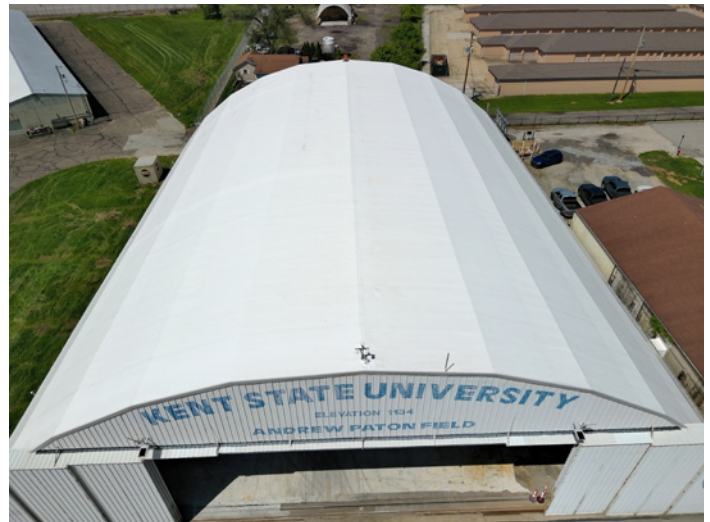


RapidLock Systems

RapidLock
TECHNOLOGY

RapidLock Systems provide an adhesive-less roof that matches the performance of fully adhered assemblies. The easy installation provides a consistent application that eliminates the variability associated with adhesive cure times. These systems have been time-tested against severe natural disasters and are a perfect solution for re-roofing and new construction projects.

The RapidLock system is comprised of specialty FleeceBACK membrane and InsulBase® RL or SecurShield® RL Polyiso Insulation. The membrane acts as the hook while the polyiso insulation acts as the loop.



EPDM Accessories

Sure-White EPDM PS Accessories are approved to use with Carlisle's Sure-Weld TPO and FleeceBACK TPO membranes.

Pressure-Sensitive Curb Flashing

Cured Sure-Seal EPDM membrane pre-cut to 20" wide with 6" PS SecurTAPE already applied. This product provides an efficient way to flash curbs and short walls.

Sizes Available:

20" x 50' – Product Number: 308705 – Black

Quantity Per Box: 1 roll

Shelf Life: 1 Year



Pressure-Sensitive Cured Cover Strip

Cured Sure-Seal or Sure-White EPDM membrane laminated to a synthetic rubber adhesive makes this product the optimal solution to overlay seam fastening plates, strip in seams and metal edgings, or make roof repairs.

Sizes Available:

6" x 100' – Product Number: 308701 – Black

6" x 100' – Product Number: 308910 – White

6" x 100' – Product Number: 349594 – Gray

9" x 100' – Product Number: 308839 – Black

9" x 100' – Product Number: 309121 – White

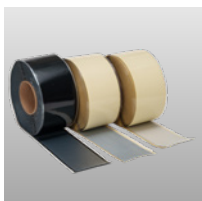
9" x 100' – Product Number: 349604 – Gray

12" x 50' – Product Number: 317598 – Black

12" x 50' – Product Number: 317596 – White

Quantity Per Box: 2 rolls (6"), 1 roll (9" and 12")

Shelf Life: 1 Year



20" Pressure-Sensitive Cured Flashing

Sure-Seal and Sure-White EPDM 20" Pressure-Sensitive (PS) Cured Flashing is pre-cut with factory-applied SecurTAPE and is the most efficient, labor-saving way to flash a curb. Production time on projects with numerous curbs or wall flashings can be reduced with this productivity-boosting accessory.

Sizes Available:

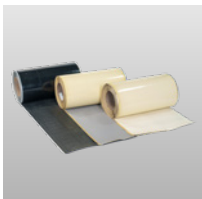
20" x 50' – Product Number: 329385 – Black

20" x 50' – Product Number: 330913 – White

20" x 50' – Product Number: 357850 – Gray

Quantity Per Box: 1 roll

Shelf Life: 1 Year



Pressure-Sensitive Elastoform Flashing®

Uncured Sure-Seal or Sure-White EPDM laminated to synthetic rubber adhesive. Pressure-Sensitive Elastoform Flashing can be used to flash corners, pipes, and other penetrations.

Sizes Available:

6" x 100' – Product Number: 310433 – Black

6" x 100' – Product Number: 310434 – White

6" x 100' – Product Number: 357891 – Gray

9" x 50' – Product Number: 303162 – Black

9" x 50' – Product Number: 309950 – White

9" x 50' – Product Number: 357890 – Gray

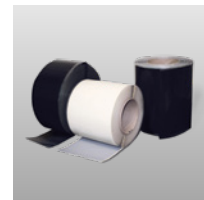
12" x 50' – Product Number: 305723 – Black

12" x 50' – Product Number: 309951 – White

12" x 50' – Product Number: 348768 – Gray

Quantity Per Box: 2 rolls (6"), 1 roll (9" and 12")

Shelf Life: 9 months when stored between 60° F and 80° F



Pressure-Sensitive Inside/Outside Corners

Uncured Sure-Seal or Sure-White EPDM laminated to a synthetic rubber adhesive. The pre-cut corners greatly reduce installation time and can be used for inside and outside corner installations.

Sizes Available:

7" x 9" – Product Number: 300199 – Black

7" x 9" – Product Number: 310310 – White*

7" x 9" – Product Number: 357892 – Gray

Quantity Per Box: 20

Shelf Life: 9 months when stored between 60° F and 80° F

**White can also be used as T-Joint Cover*



Pressure-Sensitive Pipe Seals

Cured Sure-Seal or Sure-White EPDM with a synthetic rubber adhesive. PS Pipe Seals increase the speed and ease of installation.

Sizes Available:

½" – 3" – Product Number: 300204 – Black

1" – 6" – Product Number: 309750 – Black

1" – 6" – Product Number: 316593 – White

1" – 6" – Product Number: 349607 – Gray

Quantity Per Box: 10

Shelf Life: 1 Year



Pressure-Sensitive Pourable Sealer Pockets

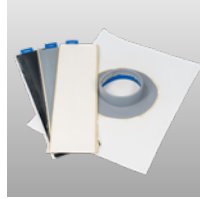
Uncured Sure-Seal or Sure-White EPDM Flashing with a synthetic rubber adhesive and a 2" support strip pre-applied to the flashing. Sizes can be combined to form larger pockets when required.

Sizes Available:

4" diameter – Product Number: 300208 – Black
6" diameter – Product Number: 300209 – Black
6" diameter – Product Number: 316243 – White
6" diameter – Product Number: 357879 – Gray
8" diameter – Product Number: 300210 – Black
8" diameter – Product Number: 332890 – White

Quantity Per Box: 12

Shelf Life: 9 months when stored between 60° F and 80° F



Pressure-Sensitive Overlayment Strip

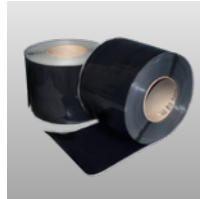
Semi-cured Sure-Seal EPDM laminated to a synthetic rubber adhesive. It is designed for stripping in drip edges, all types of metal edging and Carlisle seams, and all fastening plates.

Sizes Available:

6" x 100' – Product Number: 302319 – Black
9" x 100' – Product Number: 302281 – Black
12" x 50' – Product Number: 317600 – Black

Quantity Per Box: 2 rolls (6"), 1 roll (9"), 1 roll (12")

Shelf Life: 1 Year



Pressure-Sensitive RUSS

Reinforced Universal Securement Strip (RUSS) combines reinforced Sure-Seal or Sure-White EPDM with 3"-wide Pressure-Sensitive SecurTAPE for additional membrane securement at the perimeter and penetrations.

Sizes Available:

6" RUSS – Product Number: 300490 – Black
6" RUSS – Product Number: 309268 – White
Use with all EPDM Systems

9" RUSS – Product Number: 300489

Use with Mechanically Fastened EPDM Systems

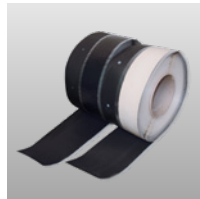
Quantity Per Box: 2 rolls (6"), 1 roll (9")

Size Available:

6" RUSS – Product Number: 301946 – Black

Quantity Per Box: 3 rolls (6")

Shelf Life: 1 Year



Pressure-Sensitive SecurTAPE™

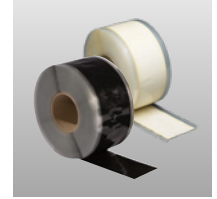
Fully cured synthetic rubber product used for splicing cured Sure-Seal or Sure-White EPDM membrane in ballasted, adhered and mechanically fastened roofing systems.

Sizes Available:

3" x 100' – Product Number: 300465 – Black
3" x 100' – Product Number: 303260 – White
6" x 100' – Product Number: 302952 – Black
6" x 100' – Product Number: 317501 – White

Quantity Per Box: 4 rolls (3"), 2 rolls (6")

Shelf Life: 1 Year



Pressure-Sensitive T-Joint Covers

Semi-cured Sure-Seal or Sure-White EPDM laminated to a synthetic rubber adhesive. Used to seal field splice intersections

and horizontal-to-vertical transitions of field splices.

12" x 12" T-Joint Covers are available for 30-Year Warranty Systems.

Sizes Available:

6" x 6" – Product Number: 303100 – Black
6" x 6" – Product Number: 332871 – White*
6" x 6" – Product Number: 357877 – Gray
12" x 12" – Product Number: 305089 – Black

Quantity Per Box: 20

Shelf Life: 9 months when stored between 60° F and 80° F

**White approved for use on TPO*



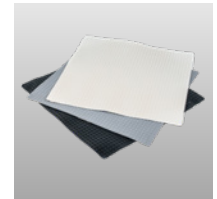
Pressure-Sensitive Walkway Pads

Cured Sure-Seal or Sure-White EPDM with a synthetic rubber adhesive. Pressure-Sensitive Walkway Pads are designed to protect the Carlisle EPDM membrane in areas exposed to repetitive foot traffic.

Sizes Available:

30" x 30" – Product Number: 300829 – Black
30" x 30" – Product Number: 309589 – White
30" x 30" – Product Number: 357247 – Gray

Quantity Per Pallet: 50



Pipe Supports

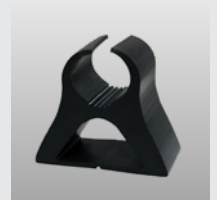
An extruded EPDM product used to support steel pipe, electrical conduit, PVC pipe, and copper tubing on Carlisle's EPDM, TPO, and PVC roofing systems.

Sizes Available:

Small: ¾" – 2" – Product Number: 309402

Large: 2 ½" – 5" – Product Number: 309404

Quantity Per Box: 20 (Mini and Small), 10 (Large)

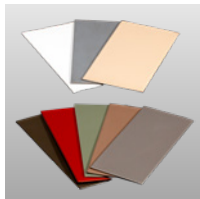


Thermoplastic Accessories



Coated Metal

24-gauge (0.6 mm) galvanized steel sheets coated with a layer of .035" non-reinforced flashing. Membrane may be welded directly to the coated metal. The sheet is cut to the appropriate width and used to fabricate metal drip edges or other roof perimeter edging profiles.



TPO

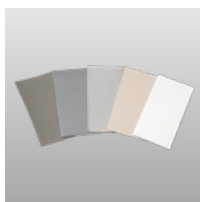
Sizes Available:

5 Pcs/Pallet – 4' x 10' – Product Number: 332916 – Medium Bronze Coated Metal
5 Pcs/Pallet – 4' x 10' – Product Number: 332913 – Rock Brown Coated Metal
5 Pcs/Pallet – 4' x 10' – Product Number: 332915 – Terra Cotta Coated Metal
5 Pcs/Pallet – 4' x 10' – Product Number: 332914 – Slate Gray Coated Metal
5 Pcs/Pallet – 4' x 10' – Product Number: 332912 – Patina Green Coated Metal
10 Pcs/Pallet – 4' x 10' – Product Number: 309272 – White
10 Pcs/Pallet – 4' x 10' – Product Number: 309273 – Gray
10 Pcs/Pallet – 4' x 10' – Product Number: 309274 – Tan
25 Pcs/Pallet – 4' x 10' – Product Number: 303181 – White
25 Pcs/Pallet – 4' x 10' – Product Number: 303183 – Gray
25 Pcs/Pallet – 4' x 10' – Product Number: 303182 – Tan

PVC

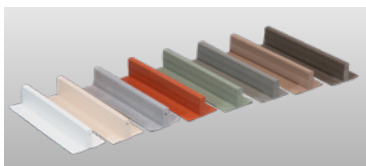
Sizes Available:

10 Pcs/Pallet – 4' x 10' – Product Number: 307708 – White
10 Pcs/Pallet – 4' x 10' – Product Number: 307709 – Gray
10 Pcs/Pallet – 4' x 10' – Product Number: 307710 – Tan
10 Pcs/Pallet – 4' x 10' – Product Number: 334438 – Light Gray
10 Pcs/Pallet – 4' x 10' – Product Number: 335822 – Slate Gray



Contour Rib™

This profile is extruded from the same weather-resistant TPO or PVC compound as the membrane. The Contour Rib Profile is secured to the TPO or PVC roofing membrane to simulate a standing seam metal roofing system. The physical dimensional stability of the profile is enhanced with fiberglass and the rectangular profile provides exceptional shadow lines for aesthetic appeal.



TPO

Sizes Available:

10' – Product Number: 324574 – White
10' – Product Number: 324572 – Gray
10' – Product Number: 324573 – Tan
10' – Product Number: 333064 – Medium Bronze
10' – Product Number: 330830 – Rock Brown
10' – Product Number: 330797 – Terra Cotta
10' – Product Number: 330799 – Slate Gray
10' – Product Number: 330798 – Patina Green

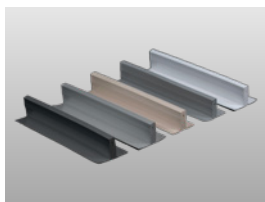
Quantity Per Box: 20

PVC

Sizes Available:

10' – Product Number: 321909 – White
10' – Product Number: 321911 – Gray
10' – Product Number: 321910 – Tan
10' – Product Number: 334439 – Light Gray
10' – Product Number: 335823 – Slate Gray

Quantity Per Box: 20



Inside/Outside Corners

Pre-molded corners, used for flashing inside and outside corners on a variety of details.

TPO

Sizes Available: One Size

Product Number: 300020 – Gray – Outside
Product Number: 300025 – Tan – Outside
Product Number: 300016 – White – Outside
Product Number: 307406 – White – Inside
Product Number: 307407 – Tan – Inside
Product Number: 307408 – Gray – Inside

Quantity Per Bag: 12

PVC

Sizes Available: One Size

Product Number: 329286 – White/Gray – Outside
Product Number: 329284 – White/Gray – Inside
Product Number: 329287 – White/Tan – Outside
Product Number: 329285 – White/Tan – Inside
Product Number: 359862 – Light Gray/Gray – Outside

Quantity Per Bag: 12



Universal Corners

Pre-molded corners, used for flashing outside or inside corners on new construction installations where right-angled conditions are more common. Installation is fast and easy with no stretching required.

TPO

Sizes Available: One Size

Product Number: 318070 – White
Product Number: 327601 – Gray
Product Number: 327602 – Tan

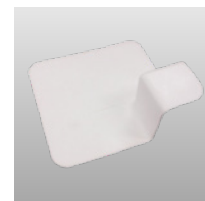
Quantity Per Box: 20

PVC

Sizes Available: One Size

Product Number: 318071 – White
Product Number: 329288 – Gray
Product Number: 329289 – Tan
Product Number: 348092 – Light Gray

Quantity Per Box: 20



T-Joint Covers

Injection-molded non-reinforced flashings used to seal T-Joint splice intersections.

TPO

Sizes Available:

4½" diameter – Product Number: 307476 – White
4½" diameter – Product Number: 307478 – Gray
4½" diameter – Product Number: 307477 – Tan

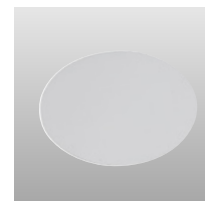
Quantity Per Box: 100

PVC

Sizes Available:

4½" diameter – Product Number: 308224 – White
4½" diameter – Product Number: 309494 – Gray
4½" diameter – Product Number: 309847 – Tan
4½" diameter – Product Number: 359866 – Light Gray

Quantity Per Box: 100



Curb Wrap Corners

Prefabricated flashings made of 60-mil reinforced Sure-Weld detail membrane designed to reduce curb flashing time. Each corner has a 6"-wide base flange and a 12" overall height. One curb will require 4 corners. Other sizes and colors available through special orders. Available in 1- or 2-piece wraps.

TPO

Sizes Available:

7" Wrap for 12" Curb – Product Number: 305062 – White
13" Wrap for 24" Curb – Product Number: 305063 – White
19" Wrap for 36" Curb – Product Number: 305064 – White

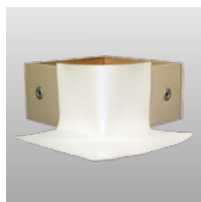
Quantity Per Box: 12 pieces or 3 complete curbs

PVC

Sizes Available:

7" Wrap for 12" Curb – Product Number: 322973 – White
7" Wrap for 12" Curb – Product Number: 322970 – Gray
7" Wrap for 12" Curb – Product Number: 322977 – Tan
13" Wrap for 24" Curb – Product Number: 322975 – White
13" Wrap for 24" Curb – Product Number: 322971 – Gray
13" Wrap for 24" Curb – Product Number: 322978 – Tan
19" Wrap for 36" Curb – Product Number: 322976 – White
19" Wrap for 36" Curb – Product Number: 322972 – Gray
19" Wrap for 36" Curb – Product Number: 322979 – Tan

Quantity Per Box: 12 pieces or 3 complete curbs



Crossgrip Walkway

PVC and TPO Crossgrip Walkway is an open grid walkway used to protect the membranes from regular foot traffic and other hazards.

TPO

Sizes Available:

3' x 33' – Product Number: 332633 – White
3' x 33' – Product Number: 332634 – Gray
3' x 33' – Product Number: 341122 – Yellow

Packaged Individually

PVC

Sizes Available:

3' x 33' – Product Number: 332475 – White
3' x 33' – Product Number: 332474 – Gray
3' x 33' – Product Number: 340355 – Yellow

Packaged Individually



Walkway Rolls

Heat-weldable walkway rolls designed to protect Carlisle's TPO and PVC membranes in areas exposed to repetitive foot traffic and other hazards.

TPO

Sizes Available:

34" x 50' – Product Number: 310508 – White
34" x 50' – Product Number: 310509 – Gray
34" x 50' – Product Number: 310510 – Tan

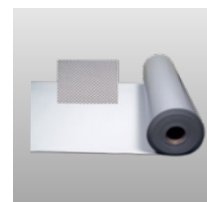
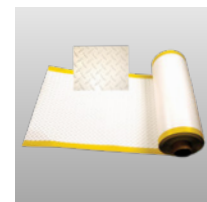
Packaged Individually

PVC

Sizes Available:

80-mil 36" x 60' – Product Number 307711 – Gray
110-mil 36" x 60' – Product Number: 336712 – Gray

Packaged Individually



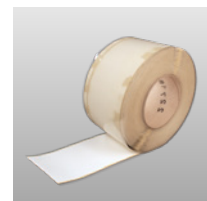
PVC Pressure-Sensitive Cover Strip

Non-reinforced KEE HP flashing laminated to a nominal 35-mil, fully cured, pressure-sensitive, synthetic rubber for use on PVC/KEE HP utilizing Step 1 Activator and Step 2 Primer for installation.

Sizes Available:

6" x 100' – Product Number: 332616 – White
6" x 100' – Product Number: 332617 – Gray
6" x 100' – Product Number: 332618 – Tan
6" x 100' – Product Number: 359861 – Light Gray

Quantity Per Box: 2 rolls



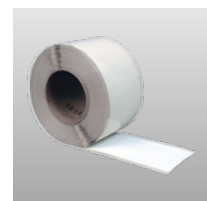
TPO Pressure Sensitive Cover Strip

Non-reinforced TPO laminated to a nominal 30-mil, pressure-sensitive tape used for stripping in flat metal flanges such as drip edge or gravel stop.

Sizes Available:

6" x 100' – Product Number: 303102 – White
6" x 100' – Product Number: 303103 – Gray
6" x 100' – Product Number: 303104 – Tan

Quantity Per Box: 2 rolls



Yellow PS Warning Strip

Non-reinforced yellow TPO coverstrip can be used on TPO, EPDM, or PVC with the corresponding membrane primer (and activator for PVC) to indicate roof edges and other hazards.

Sizes Available:

6" x 100' – Product Number: 325721

Quantity Per Box: 2 rolls



Thermoplastic Accessories



Reinforced Coverstrip

Carlisle's Reinforced Coverstrip is an 8" (20.3 cm)-wide, nominal 60-mil (1.52 mm) and 80-mil (2.03 mm)-thick flashing that contains a polyester reinforcing fabric. Reinforced Coverstrip is used for stripping in rows of fasteners and plates, stripping in coated edge metal, and covering the butt joints of Carlisle PVC and KEE HP FleeceBACK membranes.

PVC

Sizes Available:

8" x 75' – Product Number: 325168 – White (80-mil)
8" x 75' – Product Number: 325169 – Gray (80-mil)
8" x 75' – Product Number: 326121 – Tan (80-mil)
8" x 75' – Product Number: 359867 – Light Gray (80-mil)
8" x 100' – Product Number: 348090 – White (60-mil)

Quantity Per Box: 1 roll (80-mil)

KEE HP

Sizes Available:

8" x 75' – Product Number: 325165 – White (80-mil)
8" x 75' – Product Number: 325167 – Gray (80-mil)
8" x 75' – Product Number: 326120 – Tan (80-mil)
8" x 75' – Product Number: 359863 – Light Gray (80-mil)
8" x 100' – Product Number: 325981 – White (60-mil)

Quantity Per Box: 2 rolls (60-mil), 1 roll (80-mil)

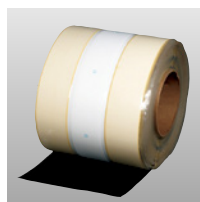


TPO Pressure-Sensitive RUSS

Available in 10" RUSS (shown) and used in place of narrow-width sheets to secure membrane in the perimeter of the roof on mechanically fastened systems. 6" RUSS is also available and is used to secure membrane at the base of vertical walls for additional membrane securement without penetrating the sheet.

Sizes Available:

6" x 100' – Product Number: 303373
10" x 100' – Product Number: 305442
Quantity Per Box: 1 roll (10"), 2 rolls (6")



Non-Reinforced Flashing

Non-reinforced thermoplastic membrane used to field-fabricate pipe flashings and scuppers when the use of a pre-molded accessory is not feasible.

TPO

Sizes Available:

12" x 50' – Product Number: 300473 – White
12" x 50' – Product Number: 300479 – Gray
12" x 50' – Product Number: 300476 – Tan
24" x 50' – Product Number: 300474 – White
24" x 50' – Product Number: 300480 – Gray
24" x 50' – Product Number: 300477 – Tan
24" x 50' – Product Number: 332963 – Medium Bronze
24" x 50' – Product Number: 328056 – Rock Brown
24" x 50' – Product Number: 328047 – Terra Cotta
24" x 50' – Product Number: 328053 – Slate Gray
24" x 50' – Product Number: 328050 – Patina Green

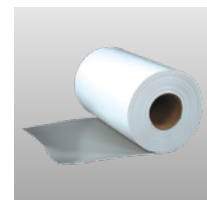
Quantity Per Box: 1 roll

PVC/KEE HP

Sizes Available:

12" x 50' – Product Number: 327840 – White/Gray
12" x 50' – Product Number: 327842 – White/Tan
18" x 100' – Product Number: 325853 – Gray
24" x 50' – Product Number: 327841 – White/Gray
24" x 50' – Product Number: 327843 – White/Tan
24" x 50' – Product Number: 334437 – Light Gray
24" x 50' – Product Number: 335821 – Slate Gray

Quantity Per Box: 1 roll



Reinforced Overlayment

Pre-slit reinforced membrane used to overlay fasteners, plates, and end laps on FleeceBACK® and Self-Adhering Technology (SAT™) membranes.

TPO

Sizes Available:

45-mil
6" x 100' – Product Number: 300485 – White
6" x 100' – Product Number: 300486 – Gray
6" x 100' – Product Number: 302811 – Tan
60-mil
6" x 100' – Product Number: 325005 – White
6" x 100' – Product Number: 325003 – Gray
6" x 100' – Product Number: 325004 – Tan
9" x 50' – Product Number: 310419 – White
9" x 50' – Product Number: 310417 – Gray
9" x 50' – Product Number: 310418 – Tan
80-mil
9" x 50' – Product Number: 318404 – White
Quantity Per Box: 3 rolls (6"), 2 rolls (9")



Molded Sealant Pockets

Interlocking, two-piece, injection-molded, weldable pockets used to waterproof pipe clusters or other oddly shaped penetrations.

TPO

Sizes Available:

6" wide x 2" high

Can be adjusted from 7½" to 11½" in length

Product Number: 316539 – White

Product Number: 316540 – Gray

Product Number: 316541 – Tan

Quantity Per Box: 5 complete pockets

PVC

Sizes Available:

6" wide x 2" high

Can be adjusted from 7½" to 11½" in length

Product Number: 316542 – White

Quantity Per Box: 5 complete pockets



Split Pipe Seals

Prefabricated flashings made of 60-mil reinforced Sure-Weld detail membrane and Sure-Flex membrane used for flashing pipes with obstructions that prevent the use of a molded pipe seal. Other sizes and colors available via special order.

TPO

Sizes Available:

1" – Product Number: 303504 – White

1" – Product Number: 307654 – Gray

1" – Product Number: 307648 – Tan

2" – Product Number: 303505 – White

2" – Product Number: 307655 – Gray

2" – Product Number: 307649 – Tan

3" – Product Number: 303506 – White

3" – Product Number: 307656 – Gray

3" – Product Number: 307650 – Tan

4" – Product Number: 303507 – White

4" – Product Number: 307657 – Gray

4" – Product Number: 307651 – Tan

5" – Product Number: 303508 – White

5" – Product Number: 307658 – Gray

5" – Product Number: 307652 – Tan

6" – Product Number: 303509 – White

6" – Product Number: 307659 – Gray

6" – Product Number: 307653 – Tan

Quantity Per Box: 8

PVC

Sizes Available:

1" – Product Number: 307724 – White

1" – Product Number: 307725 – Gray

1" – Product Number: 307726 – Tan

2" – Product Number: 307727 – White

2" – Product Number: 307728 – Gray

2" – Product Number: 307729 – Tan

3" – Product Number: 307730 – White

3" – Product Number: 307731 – Gray

3" – Product Number: 307732 – Tan

4" – Product Number: 307733 – White

4" – Product Number: 307734 – Gray

4" – Product Number: 307735 – Tan

5" – Product Number: 307736 – White

5" – Product Number: 307737 – Gray

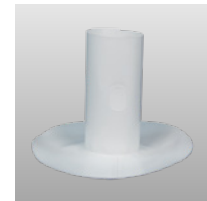
5" – Product Number: 307738 – Tan

6" – Product Number: 307739 – White

6" – Product Number: 307740 – Gray

6" – Product Number: 307741 – Tan

Quantity Per Box: 8



Thermoplastic Accessories



Molded Pipe Seals

Injection-molded, pre-formed pipe flashings for pipes ¾" to 8" diameter. Molded Pipe Seals provide a reliable method of waterproofing round pipe penetrations, as well as a substantial labor savings compared to field-fabrication.

TPO

Sizes Available:

¾"– 8" diameter – Product Number: 316534 – White

¾"– 8" diameter – Product Number: 316535 – Gray

¾"– 8" diameter – Product Number: 316536 – Tan

Quantity Per Box: 8

PVC

Sizes Available:

¾"– 8" diameter – Product Number: 316537 – White

¾"– 8" diameter – Product Number: 322959 – Gray

¾"– 8" diameter – Product Number: 323823 – Tan

Quantity Per Box: 8



Square Tubing Wraps

Fabricated using 60-mil reinforced Sure-Weld detail membrane and Sure-Flex membranes, square tubing wraps are designed to flash square metal tubing. A split and overlap tab allow the flashings to be opened and wrapped around a square penetration with an obstruction. Other sizes and colors available through special order.

TPO

Sizes Available:

3" x 3" – Product Number: 305576 – White

3" x 3" – Product Number: 307664 – Gray

3" x 3" – Product Number: 307660 – Tan

4" x 4" – Product Number: 305577 – White

4" x 4" – Product Number: 307665 – Gray

4" x 4" – Product Number: 307661 – Tan

5" x 5" – Product Number: 305578 – White

5" x 5" – Product Number: 307666 – Gray

5" x 5" – Product Number: 307662 – Tan

6" x 6" – Product Number: 305579 – White

6" x 6" – Product Number: 307667 – Gray

6" x 6" – Product Number: 307663 – Tan

Quantity Per Box: 8

PVC

Sizes Available:

3" x 3" – Product Number: 307742 – White

3" x 3" – Product Number: 307743 – Gray

3" x 3" – Product Number: 307744 – Tan

4" x 4" – Product Number: 307745 – White

4" x 4" – Product Number: 307746 – Gray

4" x 4" – Product Number: 307747 – Tan

6" x 6" – Product Number: 307748 – White

6" x 6" – Product Number: 307749 – Gray

6" x 6" – Product Number: 307750 – Tan

Quantity Per Box: 8



One- and Two-Way Pressure Relief Vents

Engineered to reduce moisture within the roofing system and release trapped air pressure within the building.

One-Way Vents allow trapped air pressure to escape;

Two-Way Vents (combined with One-Way Vents) help to reduce moisture.

Sizes Available:

8" x 11" – Product Number: 327975 – One-Way Pressure Relief Vent

8" x 11" – Product Number: 327976 – Two-Way Pressure Relief Vent

Quantity Per Box: 25 Pcs

TPO

Sizes Available:

9" x 12" – Product Number: 334849 – TPO One-Way Vent

9" x 12" – Product Number: 334880 – TPO Two-Way Vent

Quantity Per Box: 4 Pcs

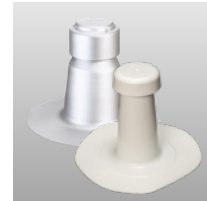
PVC

Sizes Available:

9" x 12" – Product Number: 335592 – PVC One-Way Vent

9" x 12" – Product Number: 335593 – PVC Two-Way Vent

Quantity Per Box: 4 Pcs



Square Top Vents

Available in TPO and PVC versions, Square Top Vents are designed to allow air to flow freely through the vent while preventing water from infiltrating the roofing system.

TPO

Sizes Available:

8" – Product Number: 326867 – TPO Square Top Vent

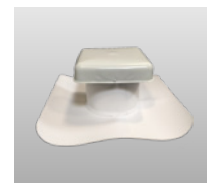
Quantity Per Box: 2 Pcs

PVC

Sizes Available:

8" – Product Number: 326866 – PVC Square Top Vent

Quantity Per Box: 2 Pcs



T-Top Vents

Available in TPO and PVC versions, T-Top Vents are designed to allow air to flow freely through the vent while preventing water from infiltrating the roofing system.

TPO

Sizes Available:

2 Pcs/Box – 4" – Product Number: 326869 – TPO T-Top Vent

2 Pcs/Box – 6" – Product Number: 326882 – TPO T-Top Vent

3 Pcs/Box – 8" – Product Number: 326883 – TPO T-Top Vent

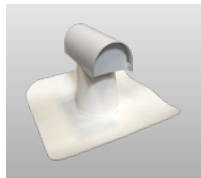
PVC

Sizes Available:

2 Pcs/Box – 4" – Product Number: 326868 – PVC T-Top Vent

2 Pcs/Box – 6" – Product Number: 326880 – PVC T-Top Vent

3 Pcs/Box – 8" – Product Number: 326881 – PVC T-Top Vent



APEEL Protective Film



Available on Sure-Weld 60-mil and 80-mil TPO and Sure-Flex 60-mil PVC and KEE HP membranes, APEEL Protective Film guards the membrane's

surface from scuffs and dirt accumulation during installation, eliminating the need to clean the roof upon roof completion. Durable and easy to remove, APEEL Protective Film helps to save time and labor, improves aesthetics and long-term reflectivity.



APEEL Cover Tape

APEEL Cover Tape is a 6"-wide, 1,640'-long roll of APEEL Protective Film used to protect areas of membrane where APEEL Protective Film has been removed (around details) or was not factory applied (seams). APEEL Cover Tape allows applicators to keep 100 percent of the membrane surface clean during installation and is applied using the APEEL Cover Tape Applicator.

Sizes Available:

6" x 1,640' – Product Number: 333093

Quantity Per Box: 2 rolls/ctn



APEEL Cover Tape Applicator

The APEEL Cover Tape Applicator is made of heavy-duty powder-coated aluminum with stainless steel fasteners. It holds one roll of APEEL Cover Tape and uses size segmented pressure wheels to ensure proper adhesion.

Product Number: 333095



Fasteners & Plates

- Sure-Seal, Sure-White, and Sure-Tough EPDM
- Sure-Weld TPO
- Sure-Flex PVC

AccuTrac Plate (Insulation)



AccuTrac Plates are 3" square flat- or recessed-bottom plates made of Galvalume-coated steel. Used to fasten insulation with the AccuTrac Tool.

Sizes Available:
3"



CD-10 Fastener



Applicable for Sure-Seal, Sure-Weld, and Sure-Flex mechanically fastened roofing systems. Can be used to secure membranes, RUSS, and insulation. Compatible with structural concrete decks (minimum 2,500 psi).

Sizes Available:
2" – 12" (1" Increments)



Polymer GypTec® Fastener & Plate

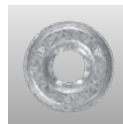


Applicable for Sure-Seal, Sure-Weld, and Sure-Flex mechanically fastened and fully adhered systems. Can be used to secure membranes, RUSS, and insulation. Applicable to cementitious wood fiber, lightweight concrete and gypsum decks.

Sizes Available:
2 1/2" – 12" (1/2" Increments)

GYPTec PLATE

Sizes Available:
2" Metal membrane plate
3" Metal insulation plate

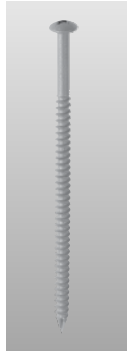


HD 14-10 Fastener



Applicable for Sure-Seal, Sure-Tough, Sure-Weld, and Sure-Flex mechanically fastened and fully adhered systems. Can be used to secure membranes, RUSS, and insulation. Compatible with wood and structural concrete decks (minimum 2,500 psi).

Sizes Available:
1 1/4", 1 3/4", 2" – 12" (1" Increments), 14", 16", 18", 20"



HP Fastener



Can be used to secure Sure-Tough membranes, RUSS, and insulation. Not applicable for securing TPO and PVC membranes. Compatible with wood (minimum 1 5/32" [12mm] CDX plywood) and steel decks (22-gauge [0.76 mm] or heavier).

Sizes Available:
1 1/4", 2" – 15" (1" Increments)



HP Lite-Deck Fastener & Plate



Applicable for Sure-Seal, Sure-Weld, and Sure-Flex mechanically fastened and fully adhered roofing systems. Used in conjunction with a specially designed 3" Lite-Deck Metal Plate for Insulation attachment to gypsum, cementitious wood fiber (Tectum), and lightweight structural concrete decks. Not applicable for membrane attachment. Features an oversize diameter (0.312" shank) and a deep, coarse thread designed for high pullout resistance.

Sizes Available:
2 5/8", 3" – 10" (1" Increments), 12"

LITE-DECK METAL PLATE

Sizes Available:
3" Diameter



■ Sure-Seal, Sure-White, and Sure-Tough EPDM

■ Sure-Weld TPO

■ Sure-Flex PVC

HP Polymer Seam Plate



Used in conjunction with HP Fasteners to mechanically fasten Sure-Tough membrane and RUSS over steel decks. (22-gauge [0.76mm] or heavier)

Sizes Available:

2" diameter

HP-XTRA POLYMER SEAM PLATE

Also Available (not shown)

Used in conjunction with HP-XTRA Fasteners to mechanically fasten Sure-Tough EPDM membranes over steel decks.

Sizes Available:

2 3/8" diameter



Insulation Fastening Plate



Along with the appropriate fastener, used for insulation securement over wood (minimum 1 5/32" [12mm] CDX plywood), steel (22-gauge [0.76 mm] or heavier), and concrete decks. Available in steel and plastic versions.

Sizes Available:

3" diameter



Insulfast™ Fastener



Along with the appropriate plate, used to secure insulation over wood (minimum 1 5/32" [12mm] CDX plywood) and steel decks (22-gauge [0.76 mm] or heavier).

Sizes Available:

1 5/8", 2 1/4", 3" – 8" (1" increments)



HP-X Fastener™ & HP-XTRA Fastener



Applicable for Sure-Seal, Sure-Weld, and Sure-Flex mechanically fastened and fully adhered systems. Can be used to secure membranes, RUSS, and insulation. Compatible with wood (minimum 1 5/32" [12mm] CDX plywood) and steel decks (22-gauge [0.76 mm] or heavier).

Sizes Available:

2" – 12" (1" Increments)

14" – 24" (2" Increments)

HP-XTRA FASTENER

Also available (not shown)

A #21 diameter fastener compatible with wood (minimum 1 5/32" [12mm] CDX plywood) and steel decks (22-gauge [0.76 mm] or heavier).

Sizes Available:

2" – 10" (1" increments), 12"



Induction Welding Plate



Used for Sure-Weld and Sure-Flex systems. A 3" round specially coated plate is used with HP-X Fasteners and the corresponding induction welding tool for membrane and insulation attachment.

OPTIONS INCLUDE:

Rhinobond* Induction Welding TPO Plate & PVC Plate

isoWELD* Induction Welding TPO Plate & PVC Plate

Sizes Available:

3" diameter



Fasteners & Plates

- Sure-Seal, Sure-White, and Sure-Tough EPDM
- Sure-Weld TPO
- Sure-Flex PVC

Metal Fastening Bar



Galvalume™-coated metal bar used to mechanically fasten EPDM membranes. The bar can be easily cut to desired length. Installed using HP-X Fasteners.

Sizes Available:

1" wide x 10' long



Purlin Fastener



Used with Carlisle's Metal Retrofit Roofing Systems to secure membrane and RUSS to structural steel purlins. Provides superior back-out resistance in standard 16-gauge Purlins.

Sizes Available:

3 3/4", 4 3/4", 5 3/4", 7", 8"



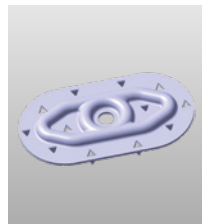
Oval Barbed Plate



Along with the appropriate fastener, used to secure Sure-Flex membranes to wood (minimum 1 5/32" [12mm] CDX plywood) and steel decks (22-gauge [0.76 mm] or heavier).

Sizes Available:

1 1/2" x 2 3/4" Oval



RetroDriller Fastener



A specially designed fastener with a 1/2" drill point used for attaching Sure-Tough, Sure-Weld, and Sure-Flex membranes to structural steel purlins (up to 3/16") in standing seam metal roof retrofit applications.

Sizes Available:

4", 5", 6", 7", 8" & 10"



Piranha Plate



Along with the appropriate fastener, used to secure Sure-Weld and Sure-Flex membranes over wood (minimum 1 5/32" [12mm] CDX plywood), steel (22-gauge [0.76 mm] or heavier), and concrete decks.

Sizes Available:

2 3/8" diameter

HP-XTRA PIRANHA PLATE

Also Available (not shown)

Used with HP-XTRA Fasteners to secure Sure-Weld and Sure-Flex membranes to wood (minimum 1 5/32" [12mm] CDX plywood) and steel (22-gauge [0.76 mm] or heavier) decks.

Sizes Available:

2 3/8" diameter



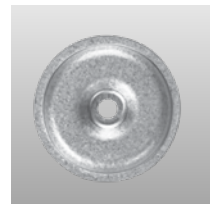
Seam Fastening Plate



A 2" diameter metal plate, applicable with HP, HP 14-10, HP-X, and CD-10 fasteners, used to mechanically attach Sure-Tough membranes and RUSS to wood (minimum 1 5/32" [12mm] CDX plywood) decks, or for membrane securement at angle changes in conjunction with the appropriate fastener

Sizes Available:

2" diameter



■ Sure-Seal, Sure-White, and Sure-Tough EPDM

■ Sure-Weld TPO

■ Sure-Flex PVC

SecurFast™ Insulation Fastening Plate



Designed for cover board securement under Sure-Seal, Sure-White, Sure-Flex, or Sure-Weld roofing systems. Plates are stamped from Galvalume-coated steel for long-term protection against corrosion.

Sizes Available:

2 7/8"



Termination Bar (Aluminum)



Extruded aluminum bar that is designed for securing and sealing compression type flashing terminations. The bar features a top edge for ease of applying Carlisle's Lap Sealant for EPDM installations or Universal Single Ply Sealant for TPO, PVC, and KEE HP installations. The bar can be easily cut to any desired length.

Sizes Available:

1" wide x 10' long (250 linear feet)



Term Bar Nail-In



Used with Carlisle's Termination Bar or Seam Fastening Plates to secure membrane to concrete block, brick, or structural concrete walls. A zinc-plated steel pin provides excellent corrosion resistance while the zinc alloy body provides excellent holding power.

Sizes Available:

1 1/4"



Dual Prong Base Sheet Fastener



Designed to secure base sheets over gypsum, fibrous cement, and lightweight concrete decks. Fasteners are installed using Carlisle's stand-up Dual Prong Applicator, which holds and drives the tube into the deck and sets the wires.

Sizes Available:

1.8"



Adhesives, Primers, and Sealants

■ Sure-Seal, Sure-White, and Sure-Tough EPDM

■ Sure-Weld TPO

■ Sure-Flex PVC

■ FleeceBACK

■ Multiple-Ply Systems

■ Low-VOC Product

90-8-30A EPDM Bonding Adhesive



A high-strength, solvent-based contact adhesive that allows quick bonding of cured EPDM membranes to various substrates. Designed for bonding Sure-White, Sure-Seal, Sure-Tough, and Epichlorohydrin membranes to approved substrates.

Coverage Rate: 60 square feet per gallon of finished surface.

Packaging: 5-gallon pail

Product Number: 302124

Shelf Life: 12 months



Aqua Base 120 Bonding Adhesive



A semi-pressure-sensitive, water-based adhesive. This product may be used as a two-sided contact adhesive with EPDM and TPO membranes. Also compatible with FleeceBACK EPDM and FleeceBACK TPO membranes.

Coverage Rate: 120 square feet per gallon of finished surface. (May vary due to conditions such as insulation type or wall construction.)

Packaging: 5-gallon pail

Product Number: 307431

Shelf Life: 12 months



CAV-GRIP® III Adhesive/Primer



Carlisle's CAV-GRIP III is a spray applied aerosol contact adhesive and primer used to adhere EPDM and TPO to horizontal and vertical surfaces and FleeceBACK membranes to vertical surfaces. CAV-GRIP III can also be used as a primer for VapAir Seal 725TR and as an unexposed asphalt primer for Flexible FAST.

Coverage Rate: See Product Data Sheet.

Packaging:

40# aerosol cylinder – Product Number: 329902

85# aerosol cylinder – Product Number: 332659

Shelf Life: 12 months unopened container

CAV-GRIP Accessories:

CAV-GRIP 6' Hose – Product Number: 304302

CAV-GRIP 12' Hose – Product Number: 304303

CAV-GRIP 18' Hose – Product Number: 304304

CAV-GRIP Hose Splitter – Product Number 332680

CAV-GRIP Spray Gun Adjustable – Product Number: 307490

CAV-GRIP Spray Gun Dual-Tip Applicator – Product Number: 348903

CAV-GRIP Spray Gun Replacement Tips – Quantity 10 – Product Number: 332774

CAV-GRIP Spray Gun w/Extension – Product Number: 330912



CAV-GRIP PVC Adhesive



Carlisle's CAV-GRIP PVC is a low-VOC adhesive that can be used for adhering standard PVC to a variety of substrates on both wall and field applications, and for adhering FleeceBACK membranes to vertical walls.

Coverage Rate: See Product Data Sheet.

Packaging:

Standard cylinder – Product Number: 335178

Large cylinder – Product Number: 336104

Shelf Life: 12 months unopened container



CAV-PRIME Low-VOC EPDM & TPO Primer



Carlisle's Low-VOC membrane primer packaged in a pressurized cylinder for spray application. Low-VOC Primer is a solvent-based product designed for one-step priming of EPDM or TPO surfaces prior to the application of SecurTAPE™, Factory-Applied Tape™, Coverstrip, and all other pressure-sensitive (PS) products. This product is designed to comply with VOC regulations. CAV-PRIME is applied via a self-contained spray system coupled with a spray gun with extension wand and applicator attachment kit. CAV-PRIME spray guns, hoses, and applicator attachment kits are each sold separately.

Coverage Rate: 1,760 sq. ft./Cylinder

Packaging: #20 Small Cylinder

Product Number: 341449

CAV-GRIP Accessories:

CAV-PRIME 3' Spray Gun – Product Number: 341897

CAV-PRIME Applicator Clamp Kit – Product Number: 341228

CAV-PRIME Backpack – Product Number: 341898



CAV-PRIME HP-250 Primer



Carlisle's HP-250 Primer packaged in a pressurized cylinder for spray application. HP-250 Primer is a solvent-based product designed for one-step cleaning and priming of EPDM surfaces prior to the application of SecurTAPE, Factory-Applied Tape, and all other pressure-sensitive (PS) products. CAV-PRIME primers are applied using a self-contained spray system coupled with a spray gun with extension wand and applicator attachment kit. CAV-PRIME spray guns, hoses, and applicator attachment kits are sold separately.

Coverage Rate: 1,320 sq. ft./cylinder

Packaging: #20 Small Cylinder

Product Number: 341445



* Not compliant in all CA counties

■ Sure-Seal, Sure-White, and Sure-Tough EPDM

■ Sure-Weld TPO

■ Sure-Flex PVC

■ FleeceBACK

■ Multiple-Ply Systems

■ Low-VOC Product

CCW-702LV Primer



A low-VOC, solvent-based, high-tack adhesive designed to promote maximum adhesion of Carlisle 725TR Air and Vapor Barrier to approved substrates. Also used as a surface prep to promote adhesion of FAST Adhesive.

Coverage Rate: 300-350 square feet per gallon.

Packaging: 5-gallon pails

Product Number: 316148

Shelf Life: 12 months unopened container



SureMB MC Adhesive



An asphalt-modified polyether, one-sided, wet lay-in adhesive designed to adhere to FleeceBACK AFX membranes and in bead format, Carlisle's modified base sheet can be installed over green concrete.

Coverage Rate:

67 FT² for smooth surfaces

50 FT² for uneven or semi-absorbent surfaces

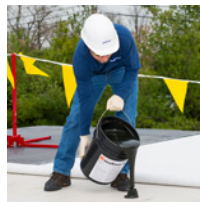
80 FT² for 6" o.c beads

110 FT² for 12" o.c beads

Packaging: 5-gallon pail

Product Number: 319689

Shelf Life: 9 months when stored below 90°F



Cut-Edge Sealant



TPO CUT-EDGE SEALANT

A clear, free-flowing polymeric material designed for sealing cut edges (exposed fabric) of Sure-Weld TPO membrane. Certain restrictions apply, see product data sheet for more information.

Coverage Rate: 225'-275' per 16-oz. bottle when applied with 1/8" bead.

Packaging: (8) 16-oz. Bottles/carton

Product Number:

303436 – Clear

327530 – Low-VOC

Shelf Life: 12 months

PVC CUT-EDGE SEALANT

Also available (not shown)

PVC Cut-Edge Sealant is not required for use, but can be used for sealing cut edges (exposed fabric) of Sure-Flex PVC membrane. Cut-Edge Sealant is clear in color.

Packaging: (12) 16-oz. Bottles/carton

Product Number: 307754

Shelf life: 12 months

Coverage Rate: 225'-275' per bottle when applied with 1/8" bead.



EPDM X-23 Low-VOC Bonding Adhesive



A high-strength, solvent-based contact adhesive that bonds EPDM membranes to various porous and non-porous substrates. This product meets the <250 gpl VOC content requirements of the OTC Model Rule for Single-Ply Roofing Adhesives.

Coverage Rate: 60 square feet per gallon of finished surface.

Packaging: 5-gallon pail

Product Number: 324002

Shelf Life: 12 months



Flexible FAST Adhesive



A low-rise, two-component, VOC-free, energy-absorbing, impact-resistant adhesive used to adhere FleeceBACK membranes and insulation boards to various substrates for a totally non-penetrating system application. Flexible FAST adhesive provides a wider window of temperature workability (25°F – 120°F).

Coverage Rate: See Product Data Sheet.

Packaging:

50-gallon drums – Part A – Product Number: 310472

50-gallon drums – Part B – Product Number: 310473

15-gallon drums – Part A – Product Number: 317329

15-gallon drums – Part B – Product Number: 317331

5-Gallon Jug – Part A – Product Number: 329722

5-Gallon Jug – Part B – Product Number: 329723

Dual Tank HFO – Part A – 336119

Dual Tank HFO – Part B – 336341

Dual Cartridge – Product Number: 322958

Shelf Life: 12 months (Part A and Part B)



HP-250 EPDM Primer



A solvent-based product designed for cleaning and priming EPDM membranes prior to the application of pressure-sensitive products.

Coverage Rate: As high as 450 square feet per gallon with Kleen EPDM membrane. Approx. 250 square feet per gallon with dusted EPDM membrane.

Packaging:

(6) 1-gallon cans – Product Number: 302070

3-gallon pails – Product Number: 332683

Shelf Life: 12 months



* Not compliant in all CA counties

Adhesives, Primers, and Sealants

■ Sure-Seal, Sure-White, and Sure-Tough EPDM

■ Sure-Weld TPO

■ Sure-Flex PVC

■ FleeceBACK

■ Multiple-Ply Systems

■ Low-VOC Product

Low-VOC Bonding Adhesive*



A high-strength, solvent-based contact adhesive that allows bonding of all EPDM and TPO membranes to various porous and non-porous substrates. This product meets the <250 gpl VOC content requirements of the OTC Model Rule for Single-Ply Roofing Adhesives.

Coverage Rate: 60 square feet per gallon of finished surface.

Packaging: 5-gallon pail

Product Number: 303090

Shelf Life: 12 months



Low-VOC Primer



Designed for one-step cleaning and priming of EPDM and TPO surfaces prior to the application of pressure-sensitive products. It is a Low-VOC product that is ideal for use where environmental issues are a concern.

Coverage Rate: As high as 700 square feet per gallon with TPO or Kleen EPDM membrane. Approx. 250 square feet per gallon with dusted EPDM membrane.

Packaging:

(6) 1-gallon cans – Product Number: 329160

3-gallon pails – Product Number: 332714

Shelf Life: 12 months



LOW-VOC Bonding Adhesive 1168*



A high-strength, solvent-based contact adhesive that allows bonding of all EPDM and Sure-Weld TPO membrane to various porous and non-porous substrates. This product meets the requirements for SCAQMD regulations.

Coverage Rate: 60 square feet per gallon of finished surface.

Packaging: 5-gallon pail

Product Number: 318847

Shelf Life: 12 months



Low-VOC PVC Bonding Adhesive



A high-strength, solvent-based contact adhesive that allows bonding of PVC and KEE HP membranes to various porous and non-porous substrates. Meets the <250 gpl VOC content requirements of the OTC Model Rule for Single-Ply roofing adhesives.

Coverage Rate: 60 square feet per gallon of finished surface.

Packaging: 5-gallon pail

Product Number: 309126

Shelf Life: 12 months



LOW-VOC HydroBond™ Adhesive



A water-based, wet lay-in, one-sided dispersion adhesive used to adhere all Sure-Flex PVC smooth-backed and FleeceBACK membranes to a variety of substrates. *Cannot be used with KEE HP, TPO or EPDM smooth-backed membrane.*

Coverage Rate:

Roller application – 100 square feet per gallon of finished surface.

Spray application – 133 square feet per gallon of finished surface.

Packaging: 5-gallon pail

Product Number: 322112

Shelf Life: 12 months



Low-VOC PVC Step 1 Activator



A high-strength, solvent-based activator that allows PVC Pressure-Sensitive Cover Strip to be bonded to PVC or KEE HP membranes. Meets the <250 gpl VOC content requirements of the OTC Model Rule.

Coverage Rate: As high as 250 – 300 square feet per gallon.

Packaging: (2) 1-gallon cans

Product Number: 332651

Shelf Life: 12 months



* Not compliant in all CA counties

■ Sure-Seal, Sure-White, and Sure-Tough EPDM

■ Sure-Weld TPO

■ Sure-Flex PVC

■ FleeceBACK

■ Multiple-Ply Systems

■ Low-VOC Product

Low-VOC PVC Step 2 Primer



A high-solids-content, clear Polymer-based primer used to prepare KEE HP and PVC membrane to be bonded to PVC Pressure Sensitive Cover Strip. Meets the <250 gpl VOC content requirements of the OTC Model Rule.

Coverage Rate: As high as 700 square feet per gallon.

Packaging: (2) 1-gallon cans

Product Number: 332652

Shelf Life: 6 months



CAV-GRIP PVC UN-TACK Low-VOC Adhesive Remover and Cleaner



Designed to flush CAV-GRIP PVC hoses and guns prior to storage, CAV-GRIP PVC UN-TACK is also used to remove adhesives and primers from a variety of surfaces including PVC membranes, accessories, metal, plastic, rubber, and glass.

Coverage Rate: 250 – 300 FT²/Cylinder surface area to be cleaned.

Packaging: #16 Aerosol Cylinder

Product Number: 336090



CAV-PRIME Low VOC Hose & Gun Cleaner



Designed to clean the spray guns and hoses used to apply CAV-PRIME primers. It can also be used to remove primer from various surfaces including single-ply membranes, accessories, and metal.

Packaging: Small Aerosol Cylinder

Product Number: 341407



PVC Step 2 Primer



A high-solids-content, clear Polymer-based primer used to prepare KEE HP and PVC membrane to be bonded to PVC Pressure Sensitive Cover Strip.

Coverage Rate: As high as 200 – 250 square feet per gallon.

Packaging: (2) 1-gallon cans

Product Number: 332653

Shelf Life: 12 months



Low-VOC UN-TACK Adhesive Remover and Cleaner



Designed for use with TPO and EPDM membranes, Low-VOC UN-TACK Cleaner is used to remove adhesives and primers from a variety of surfaces including single-ply membranes, accessories, metal, plastic, rubber, and glass. May also be used to flush CAV-GRIP III Hoses and Guns prior to storage. Do not use with CAV-PRIME.

Coverage Rate: 250 – 300 FT²/Cylinder surface area to be cleaned.

Packaging: #16 Aerosol Cylinder

Product Number: 330793



PVC and KEE HP Membrane Cleaner



This cleaner is specially formulated to clean both new and in-service Sure-Flex PVC and KEE HP membranes.

Coverage Rate: 400 square feet (one surface) per gallon.

Packaging: 5-gallon closed-top pail

Product Number: 329729



* Not compliant in all CA counties

Adhesives, Primers, and Sealants

■ Sure-Seal, Sure-White, and Sure-Tough EPDM

■ Sure-Weld TPO

■ Sure-Flex PVC

■ FleeceBACK

■ Multiple-Ply Systems

■ Low-VOC Product

One-Part Pourable Sealer



A single-component, moisture-curing, elastomeric polyether sealant that is compatible with Carlisle's EPDM, TPO, and PVC membranes. Designed to provide a flexible, durable and long-lasting seal around hard-to-flash penetrations. The sealant's consistency allows for quick pocket filling without mixing. Unused sealant is usable for up to 30 days if pouch is resealed with original cap.

Coverage Rate: 122 cubic inches of volume per ½-gallon pouch.

Packaging: (4) ½-gallon pouches per bucket

Product Number:

307647 – Black

307603 – White

Shelf Life: 12 months unopened container



Sure-Weld TPO Bonding Adhesive



A high-strength, solvent-based contact adhesive that allows bonding of Sure-Weld membrane to various porous and non-porous substrates.

Coverage Rate: 60 square feet per gallon of finished surface.

Packaging: 5-gallon pail

Product Number: 302099

Shelf Life: 12 months



TPO Primer



A high-solids, clear polymer-based primer used to prepare TPO membrane prior to the application of Pressure-Sensitive (PS) products.

Coverage Rate: 200 – 250 square feet (one surface) per gallon.

Packaging: (6) 1-gallon cans

Product Number: 310471

Shelf Life: 12 months unopened can



Sure-Seal and Sure-White Lap Sealants



Gun-consistency material used to seal the exposed cut edge of Sure-Tough membranes, and the edges of Elastoform Flashing.

Coverage Rate: 22' per tube using a 5/16" bead.

Packaging: 25 Tubes/carton

Product Number:

302174 – Black

302172 – White

Shelf Life: 12 months



Universal Single-Ply Sealant



A 100%-solids, solvent-free, one-part, polyether sealant that provides a weathertight seal to a variety of building substrates.

Coverage Rate: 25' per tube or 600' per carton using a ¼" bead.

Packaging: 24 10.1 oz. Tubes/carton

Product Number: 310131

Shelf Life: 12 months unopened container (@ <90°F)



Sure-Seal EPDM Two-Part Pourable Sealer



A two-component, solvent-free, polyurethane-based product compatible with Carlisle's Sure-Seal and Sure-White membranes. Designed to provide a flexible, durable and long-lasting seal around hard-to-flash penetrations. Can also be used to provide a permanent tie-in between Sure-Seal membranes and a built-up roof surface, and for attaching lightning rod bases and ground cable clips to the membrane surface.

Coverage Rate: 231 cubic inches of volume per properly mixed gallon.

Packaging:

Part A – (2) 1-gallon pails/ctn.

Part B – (2) 1-pint cans/ctn.

Product Number: 302084

Shelf Life: 12 months unopened container



* Not compliant in all CA counties

■ Sure-Seal, Sure-White, and Sure-Tough EPDM

■ Sure-Weld TPO

■ Sure-Flex PVC

■ FleeceBACK

■ Multiple-Ply Systems

■ Low-VOC Product

Water Cut-Off Mastic



A one-component, low-viscosity, self-wetting, butyl-blend mastic used in conjunction with roofing and waterproofing systems. It is used as a sealing agent between various membranes and substrates for compression-type terminations.

Coverage Rate: 10' per tube, using a $\frac{7}{16}$ " bead.

Packaging: 25 Tubes/carton

Product Number: 319621

Shelf Life: 12 months unopened container



Low-VOC Membrane Cleaner



Use to clean both new and in-service, PVC, KEE HP, TPO, and EPDM membranes prior to the seaming process. Low-VOC Membrane Cleaner contains 100% EPA-exempted solvents and can be used in a wide variety of temperatures.

Packaging: 1-gallon can (2) & 5-gallon can

Product Number:

326160 1-gallon can (2)

326860 5-gallon can



Weathered Membrane Cleaner



Used to clean both new and in-service EPDM and TPO membranes prior to seaming or application of Pressure-Sensitive (PS) products. Helps to loosen and remove dirt and other contaminants from the surface of the membranes and leaves a suitable surface for application of adhesive or primer. Please refer to the Product Data Sheets for specific instructions for EPDM and TPO applications.

Coverage Rate: 400 square feet (one surface) per gallon.

Packaging:

(2) 1-gallon closed-top cans,

5-gallon closed-top pail

1-gallon cans

Product Number: 304066 5-gallon pail

Product Number: 302074



* Not compliant in all CA counties

Coatings

LIQUISEAL® Liquid Flashing Metal Primer

A quick-curing, high-bonding primer used with acceptable prepared metal substrates or EPDM membranes prior to the application of Carlisle's LIQUISEAL Liquid Flashing Resin. LIQUISEAL Liquid Flashing Metal Primer is a solvent-free, high-solids, two-part, cold-applied liquid polyurethane resin. Each two-component work pack includes Component A (base resin) and Component B (hardener).

Coverage Rate: 25 ft² per packet

Product Number: 330890

Quantity: Box of 15

Shelf Life: 1 year



LIQUISEAL Liquid Flashing Resin

A two-component polyurethane-based resin used with LIQUISEAL Liquid Flashing Fleece to create a reinforced, cold-applied liquid flashing. LIQUISEAL Liquid Flashing Resin is compatible with all of Carlisle's single-ply membranes and is UV and color stable, solvent-free, low-VOC, and virtually odorless. Each LIQUISEAL Liquid Flashing Resin work pack includes Component A (white or gray) and Component B (clear), and when thoroughly mixed, will be a uniform white or gray color.

Coverage Rate: 13.6 ft² per gallon

Half-Gallon Box of 8 – Product Number: 330891 – Bright White

1 Gallon – Product Number: 330892 – Bright White

Half-Gallon Box of 8 – Product Number: 333301 – Gray

1 Gallon – Product Number: 333302 – Gray

Shelf Life: 2 years



LIQUISEAL Flashing Fleece

A non-woven, needle-punched polyester fabric reinforcement used with Carlisle's LIQUISEAL Liquid Flashing Resin. Flashing Fleece comes in a thickness of 50-mils.

13.8" x 164' – Product Number: 330893

Quantity: 3 Rolls

27" x 164' – Product Number: 330894

Quantity: 1 Roll



LIQUISEAL Concrete and Masonry Primer

A quick-curing, high-bonding primer used with acceptable prepared concrete and masonry substrates and Carlisle's LIQUISEAL Liquid Flashing Resin. LIQUISEAL Liquid Flashing Concrete and Masonry Primer is a solvent-free, two-part, cold-applied liquid epoxy resin. Each two-component work pack includes Component A (base resin) and Component B (hardener).

Coverage Rate: 19 ft² per .25-gallon packet

Product Number: 330897

Quantity: Box of 15

Shelf Life: 1 year

LIQUISEAL Accessories:

LIQUISEAL Spiral Agitator – Product Number: 330896

LIQUISEAL Surfacing Sand 50 lb. bag – Product Number: 330899



X-Tenda Coat™ Acrylic Top Coat

High-quality, acrylic, elastomeric coating for all substrates including asphalt, single-ply metal, and concrete roofing systems.

Coverage Rate: 66 ft²/gallon

Packaging: 5-gallon pail

Product Number:

358299 – White

358210 – Light Gray

358668 – Dark Gray

358311 – Tan

Shelf Life: 1 year unopened



X-Tenda Coat Acrylic Base Coat

One-component, low-VOC, water-borne base coating designed for application to aged single-ply roofing membranes. High-performance base coat for hard-to-coat surfaces such as aged Hypalon®, PVC, TPO, and EPDM roofing.

Coverage Rate: 66 ft²/gallon

Packaging: 5-gallon pail

Product Number: 358657

Shelf Life: 1 year unopened



X-Tenda Coat Acrylic Bleed Block Base Coat

A multi-purpose, acrylic, elastomeric coating for use over a variety of substrates including asphalt and metal roofing. Its unique "bleed blocking" properties make it well-suited for coating over asphalt surfaces. Excellent for waterproofing and restoring existing roofing systems.

Coverage Rate: 66 ft²/gallon

Packaging: 5-gallon pail

Product Number: 358658

Shelf Life: 1 year unopened



X-Tenda Coat Acrylic Mastic

A white, elastomeric, acrylic patching compound specially formulated for repairing and preventing roof leaks prior to coating with an acrylic reflective coating. Will not crack, craze, or lose adhesion when applied as directed to a smooth, clean, sound roof surface. Can be applied to dry or damp surfaces and does not bleed through reflective coatings.

Coverage Rate: Per Gallon
125-mil 1/8" thickness application
12 1/2 lineal ft. @ 12 in. wide
25 lineal ft. @ 6 in. wide
37 1/2 lineal ft. @ 4 in. wide
50 lineal ft. @ 3 in. wide
75 lineal ft. @ 2 in. wide
150 lineal ft. @ 1 in. wide
300 lineal ft. @ 1/2 in. wide

250-mil 1/4" thickness application
6 1/4 lineal ft. @ 12 in. wide
12 1/2 lineal ft. @ 6 in. wide
18 3/4 lineal ft. @ 4 in. wide
25 lineal ft. @ 3 in. wide
37 1/2 lineal ft. @ 2 in. wide
75 lineal ft. @ 1 in. wide
150 lineal ft. @ 1/2 in. wide

Packaging: 3.5-gallon pail

Product Number: 358659

Shelf Life: 1 year unopened



X-Tenda Coat TPO Primer

A low-VOC, solvent-based primer that is designed to promote optimal adhesion of X-Tenda Coat Acrylic Coating and X-Tenda Coat XTRA Silicone Coating to new or aged TPO. The application is simple, cost-effective, and time efficient.

Coverage Rate: 200 – 400 ft²/gallon

Packaging: 5-gallon pail

Product Number: 358676

Shelf Life: 1 year unopened



X-Tenda Coat Reinforcement Fabric

A stitch-bonded, 100% polyester material made for use with elastomeric coatings in roof membrane construction. Stitch-bonded polyester is one of the strongest fabrics available for adding reinforcement to seams, splits, joints, cracks, protrusions, and flashings. X-Tenda Coat Reinforcement Fabric offers an unusual combination of high strength properties and good elongation for excellent thermal stress resistance. The fabric is very pliable and conforms to irregular and dissimilar surfaces more easily than other soft fabrics. X-Tenda Coat Reinforcement Fabric has high absorption capability, allowing it to easily wet into and become encapsulated by the liquid roofing membrane, forming tough, waterproof details or overall reinforcement. X-Tenda Coat Reinforcement Fabric is used to reinforce detail areas such as seams, splits, drains, vents, and other penetrations through the roof surface.

Packaging: 1 – 6" x 300' roll

Product Number: 358677



X-Tenda Coat Asphaltic Bleed Block Primer

A one-component, water-based elastomeric base coating and sealer that is highly resistant to disbonding and prohibits the passage of asphaltic oils from existing asphalt roof materials.

Coverage Rate: 66 ft²/gallon

Packaging: 5-gallon pail

Product Number: 358678

Shelf Life: 1 year unopened



Coatings

X-Tenda Coat XTRA Silicone Roof Coating

100% silicone, high-solids, solvent-free, one-component, moisture-curing silicone rubber roof coating system for use on existing smooth asphaltic BUR, smooth or granulated cap sheets, single-ply roof membrane, well-adhered acrylic coating, metal, concrete, and various types of aged membrane roofing. Can be applied in excess of 50 mils in a single coat without blistering, while maintaining maximum adhesion.

Coverage Rate: 100 ft² per 1 – 1.5 gallons

Packaging: 5-gallon pail

Product Number:

358300 – White

358296 – Gray

358673 – Tan

Shelf Life: 2 years unopened



X-Tenda Coat XTRA Fastener Sealant

A one-component, moisture-curing sealant designed to reduce flow and sag properties to improve the hang of the sealant on low- and semi-steep-sloped applications. X-Tenda Coat XTRA Fastener Sealant is used to seal fasteners on low- and semi-steep-sloped metal roofs by applying a dollop of sealant to each fastener head, which completely encapsulates the fastener and seals the perimeter to the metal panel. This self-leveling sealant forms a watertight seal for pipe penetrations through roof decks in metal pitch pocket flashings, with zero shrinkage. It is mold- and mildew-resistant and easily applied in a standard cartridge.

Coverage Rate: 100 – 150 fasteners at ½" diameter per 10.1 oz. cartridge

Packaging: 24 – 11 oz. tubes

Product Number: 359014

Shelf Life: 2 years unopened



X-Tenda Coat XTRA Butter Grade Mastic

An exceptionally versatile, tough yet flexible membrane that is easily brush- or trowel-applied at thicknesses up to ¼". It is also an excellent repair material for direct-to-metal repairs, smooth built-up, smooth modified bitumen, granulated modified bitumen, aged single-ply roof membrane, flashings, fasteners, and drains.

Coverage Rate: Per Gallon

125-mil ⅛" thickness

12 ½ lineal ft. @ 12 in. wide

25 lineal ft. @ 6 in. wide

37 ½ lineal ft. @ 4 in. wide

50 lineal ft. @ 3 in. wide

75 lineal ft. @ 2 in. wide

150 lineal ft. @ 1 in. wide

300 lineal ft. @ ½ in. wide

250-mil ¼" thickness

6 ¼ lineal ft. @ 12 in. wide

12 ½ lineal ft. @ 6 in. wide

18 ¾ lineal ft. @ 4 in. wide

25 lineal ft. @ 3 in. wide

37 ½ lineal ft. @ 2 in. wide

75 lineal ft. @ 1 in. wide

150 lineal ft. @ ½ in. wide

Packaging: 2-gallon pail

Product Number: 358297

Shelf Life: 2 years unopened



X-Tenda Coat XTRA Fiber Grade Mastic

A one-component, moisture-curing, fibrated silicone rubber roof mastic designed for use on a variety of membranes and coated roofs. The product is trowel-applied and is designed to allow high-build (up to ½") trowel application on vertical or flat surfaces. Typical uses include drain bowls and under and around rooftop-mounted equipment.

Coverage Rate: ⅛" – 24 ft², ⅜" – 12 ft², ½" – 6 ft²

Packaging: 2-gallon pail

Product Number: 358298

Shelf Life: 2 years unopened



X-Tenda Coat Prime-Tek Metal Primer

Single-component acrylic primer that is stain-resistant, permanently flexible, and very durable. Provides excellent resistance over metal substrates and works well over concrete, masonry, and wood substrates. Can be over-coated with X-Tenda Coat Acrylic Coatings or X-Tenda Coat XTRA Silicone Coatings.

Coverage Rate: .3 – .5 gallons/100 ft²

Packaging: 5-gallon pail

Product Number: 358682

Shelf Life: 18 months unopened



X-Tenda Coat Heavy Duty Roof Cleaner

High-performance cleaner designed to remove dirt, dust, soot, pollen, and mold/mildew stains from roofing membranes and a variety of other substrates. This concentrated cleaner is the ideal way to prep and clean roof membranes prior to coating with silicone or acrylic roof coatings. X-Tenda Coat Heavy Duty Membrane Cleaner is also an excellent choice for cleaning steep-slope asphalt shingles.

Coverage Rate: 450 – 900 ft² per gallon (diluted)

Packaging: 4 – 1-gallon jugs

Product Number: 358681



Wind Vented Attachment System

VacuSeal™ Vent

VacuSeal Vents are manufactured from a rigid plastic material that is strong enough to resist excessive wind speeds but lightweight enough for easy handling and installation. The VacuSeal Vent Secured Roofing System is suitable for both new construction and re-roofing projects.

Product Number:

Vent Only – 333020

Vent with EPDM Skirt – 333021

Vent with TPO Skirt – 333022

Vent with PVC Skirt – 333023



VacuSeal Air Distribution Strips

A polypropylene mesh used in conjunction with the VacuSeal Vent Secured Roofing System. VacuSeal Air Distribution Strips are positioned beneath the membrane, linking the VacuSeal Vents and distributing air underneath the membrane and VacuSeal Vents.

Size Available: 10" x 500'

Quantity Per Box: 1 roll

Product Number: 333025



VacuSeal Sealant Tape

A premier elastomeric butyl rubber sealant used with termination bar to secure and seal compression-type flashing terminations for the VacuSeal Vent Secured Roofing System. This product is extruded on silicone-coated paper for easy application.

Size Available: 2.5" x 20'

Quantity Per Box: 6 rolls/case

Product Number: 333024



Air & Vapor Barriers

Modified Base Ply and Base Sheet

Can be used in multi-ply roofing systems and as an air and vapor barrier, or temporary roof for up to 90 days. These products are fiberglass-reinforced and meet or exceeds applicable ASTM requirements. When used as an air and vapor barrier, suitable substrates include concrete (primer required), DensDeck Prime, and SECUROCK.

SureMB 90 – Product Number: 307253

SureMB Type IV Glass Ply Felt – Product Number: 318311

SureMB Type VI Glass Ply Felt – Product Number: 318312

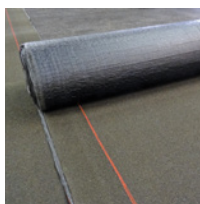


Torch Applied Base Sheet

Premium smooth-surfaced SBS torch-applied membranes reinforced with fiberglass mat. Can be used as a base ply in multi-ply systems, as an air and vapor barrier, or as a temporary roof for up to 90 days. This product is a smooth-surfaced SBS sheet with reinforced fiberglass mat. Excellent for low temperature applications when use of peel-and-stick membranes may not be possible. Ideal substrates include primed concrete and primed gypsum cover boards

SureMB 90TG – Product Number: 323887

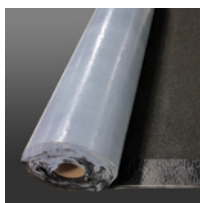
SureMB 120TG – Product Number: 323313



Self-Adhered Base Sheet

Smooth sand surface SBS (Styrene-Butadiene-Styrene) designed to be used as an air and vapor barrier and/or temporary roof (for up to 90 days).

SureMB 70 SA – Product Number: 335630



VapAir Seal MD

A 15-mil composite reinforced aluminum-coated poly with a self-adhering SBS. Used as an air and vapor barrier direct to metal decking. Meets UL 1256 and FM 4470 internal fire ratings. Reinforced aluminum-coated poly stands up to the toughest roof traffic. This product's self-healing characteristics allow for fastening penetration while maintaining IECC air leakage requirements of 0.04 cfm.

Coverage Rate: 458 FT²/roll

Packaging: 42 ½" x 131'

Thickness: 15 mils

Weight: 71 lbs/roll

Product Number: 321931

Shelf Life: 12 months unopened container



VapAir Seal™ 725TR

A 40-mil composite consisting of 35 mils of self-adhering rubberized asphalt laminated to a 5-mil woven polypropylene film. Used as an air and vapor barrier/temporary roof, one-piece poly release liner prevents the material from bonding to itself in the roll and is easily removed for installation. May be used as a temporary roof for up to 120 days. Common substrates include concrete, DensDeck®, and SECUROCK®.

Coverage Rate: 305 FT²/roll

Packaging: 39" x 100'

Thickness: 40 mils

Weight: 89 lbs/roll

Product Number: 330170

Shelf Life: 12 months unopened container



VapAir Seal Flashing Foam

**VapAir Seal Flashing Foam –
Product Number:** 326390

**VapAir Seal Flashing Foam #115 Part A –
Product Number:** 336116

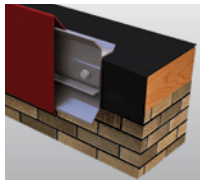
**VapAir Seal Flashing Foam #115 Part B –
Product Number:** 336117



Edge Metal

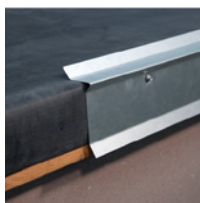
SecurEdge™ Prefabricated Systems

SecurEdge Prefabricated Systems include a variety of fascia, coping, gravel stop, and drip edge profiles. These profiles are made-to-order in 12' lengths and include the cleat, cover, splices, and fasteners for the pre-punched holes. Water control products such as gutters and downspouts, wood nailer alternatives, and a full line of accessories such as counterflashing, extenders, and lightning rod brackets are also available.



SureTite™ Galvanized Cleat

Carlisle's SureTite Cleat profiles are made from 22 gauge galvanized steel in 12' lengths with pre-punched holes and provided fasteners. The Snap-On Fascia Cleat may be used with shop fabricated fascia or tapered coping and the Drip Edge Cleat may be used with shop fabricated drip edge, gravel stop, or flat coping when Carlisle metal flat sheets are used to fabricate the cover.



SureTite 4 3/4" x 12' Fascia – Product Number: 349036

SureTite 6 1/4" x 12' Fascia – Product Number: 349037

SureTite 7 3/4" x 12' Fascia – Product Number: 349038

SureTite 3" x 12' Drip Edge – Product Number: 349032

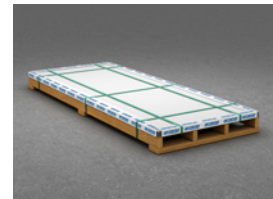
SureTite 5" x 12' Drip Edge – Product Number: 349033

SureTite 6" x 12' Drip Edge – Product Number: 349034

SureTite 7" x 12' Drip Edge – Product Number: 349035

Kynar Coated Galvalume® Steel and Aluminum Architectural Flat Sheet

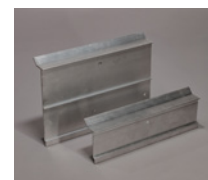
Available in over 40 standard and metallic colors as well as bare and anodized finishes, Carlisle's Kynar (PVDF) Coated Galvalume Steel and Aluminum Architectural Flat Sheet is for general sheet metal use in building applications. Standard thicknesses for aluminum include 0.032", 0.040", 0.050", and 0.063". Standard thicknesses for steel include 22 and 24-gauge. Consult the color chart for color and gauge availability. Custom colors and thicknesses are available.



Sheet Size: 4' x 10'

Extruded Fascia Cleat

Carlisle's Extruded Fascia Cleat is a continuous .080" extruded aluminum cleat that is available in 12' lengths. This product features pre-punched holes for fasteners spaced 12" on center and may be used with shop fabricated edge metal when Carlisle metal flat sheets are used to fabricate the cover.



Sure-Weld TPO Coated Metal and Sure-Flex PVC Coated Metal

For more information on these products visit page 3

Conductive Mediums for Electronic Leak Detection

Detec TruGround Conductive Primer

Detec TruGround Conductive Primer is a water-based, liquid-applied primer that enables accurate electronic leak detection (ELD) testing for conventional roof assemblies. TruGround can be used on non-conductive surfaces such as plywood, insulation, and gypsum cover boards prior to membrane installation.



Coverage Rate: 1,250 square feet per pail. (Note: porous substrates may require two coats, reducing coverage rate to 625 square feet of finished surface area)

Packaging: 5-gallon pails

Product Number: 341838

Shelf Life: 1 year

Rooftop Component Anchoring

U2400 Anchors

U2400 Anchors feature a single $\frac{3}{8}$ " threaded 304 stainless steel bolt welded to a 5.5" diameter G90 galvanized steel plate. Available in EPDM, TPO, and PVC/KEE HP in all available colors.

Flashing Size: 11.75" x 11.75"

Packaging: 10 U-Anchors per box

Product Number:

363806 – TPO White
363923 – TPO Gray
363924 – TPO Tan
363925 – TPO Misc. (all other colors)
363926 – PVC White
363927 – PVC Gray
363928 – PVC Tan
363929 – PVC Misc. (all other colors)
363940 – EPDM Black
363941 – EPDM White
363942 – EPDM Misc. (all other colors)



U3400 Anchors

U3400 Anchors feature two $\frac{3}{8}$ " threaded 304 stainless steel bolts welded to a 11" x 5.5" G90 galvanized steel plate. Available in EPDM, TPO, and PVC/KEE HP in all available colors.

Flashing Size: 11.75" x 17.5"

Packaging: 10 U-Anchors per box

Product Number:

363943 – TPO White
363944 – TPO Gray
363945 – TPO Tan
363946 – TPO Misc. (all other colors)
363947 – PVC White
363948 – PVC Gray
363949 – PVC Tan
363952 – PVC Misc. (all other colors)
363953 – EPDM Black
363954 – EPDM White
363955 – EPDM Misc. (all other colors)



HVAC Tie-Down Kit

Anchor Products HVAC Tie Down Kit provides reliable securement for rooftop HVAC units. Each kit includes everything needed to create one strap for an HVAC unit. Installation requires two U-Anchors per kit (sold separately).

Packaging: 10 kits per box

Product Code: 363956



Guy Wire Tie-Down Kit

Anchor Products Guy Wire Tie Down Kit provides reliable securement for rooftop accessories such as ducting, vent and exhaust stacks, H-frames, antennas, flagpoles, etc.. Each kit includes everything needed to create one complete guy wire strap. Installation requires one U-Anchor per kit (sold separately).

Packaging: 10 kits per box

Product Codes: 363957

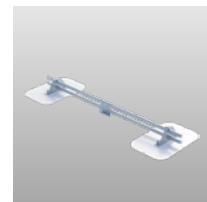


Snow Retention System

Anchor Products Snow Retention System provides a strong, engineered solution for managing snow on Carlisle single-ply roofs. Designed per project with multiple prefabricated components, the system attaches to the roof using U3400 rooftop anchors (sold separately) to deliver superior strength, consistent performance, and safe, controlled snow movement that protects people and property below.

Packaging: Varies depending on item. See product data sheet for specific packaging information.

Product Code: 363958



Insulation

InsulBase®

ReadyFlash
TECHNOLOGY

A rigid roof insulation panel composed of a closed-cell polyisocyanurate foam core bonded on each side to glass-reinforced felt (GRF). This panel comes standard with ReadyFlash™ Technology. Utilize the dark size to increase surface temperatures up to 25°F above ambient temperatures or the light side to decrease temperatures up to 5°F below ambient temperatures.

Available Thicknesses: 0.5" – 4.5"

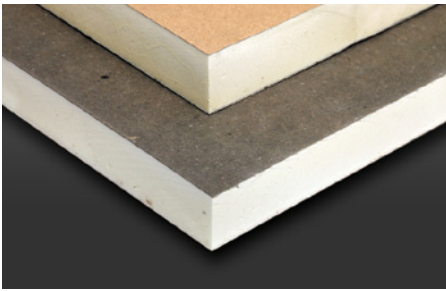
Available Panel Sizes: 4' x 4', 4' x 8', and 4' x 12'*

R-Value: 2.8 – 26.8

Insulation Attachment Type: Mechanically Fastened or Fully Adhered with Flexible FAST™ Adhesive

Membrane Attachment Type: Mechanically Fastened, Fully Adhered, Ballasted

*limited thicknesses



InsulBase NH

ReadyFlash
TECHNOLOGY

An LBC "Red List Free" rigid roof insulation panel composed of a closed-cell polyisocyanurate foam core bonded on each side to glass-reinforced felt. This product contains zero halogenated flame retardants. This panel comes standard with ReadyFlash Technology. Utilize the dark size to increase surface temperatures up to 25°F above ambient temperatures or the light side to decrease temperatures up to 5°F below ambient temperatures.

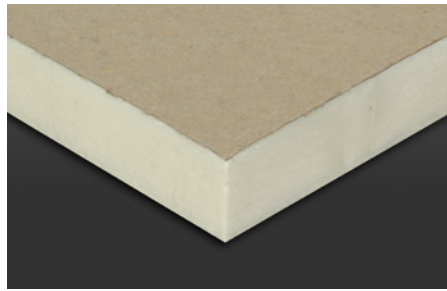
Available Thicknesses: 0.5" – 4.5"

Available Panel Sizes: 4' x 4' and 4' x 8'

R-Value: 2.8 – 26.8

Insulation Attachment Type: Mechanically Fastened, Fully Adhered with Flexible FAST Adhesive

Membrane Attachment Type: Mechanically Fastened, Fully Adhered, Ballasted



InsulBase RapidLock (RL™)

A rigid roof insulation panel composed of a closed-cell polyisocyanurate foam core bonded on each side to glass-reinforced felt. The RapidLock roofing system is an attachment method in which the insulation panel acts as the hook and the FleeceBACK® membrane acts as the loop for a fully adhered, adhesiveless system.

Available Thicknesses: 2.0" and 2.6"

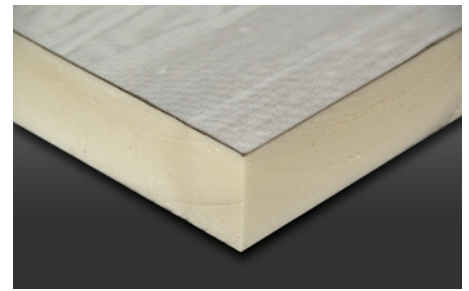
Available Panel Size: 4' x 8'

R-Value: 5.7 per inch

Insulation Attachment Type: Mechanically

Fastened or Fully Adhered with Flexible FAST Adhesive

Membrane Attachment Type: Hook and Loop with FleeceBACK RapidLock Membranes



SecurShield®

ReadyFlash
TECHNOLOGY

A rigid roof insulation panel composed of a closed-cell polyisocyanurate foam core bonded on each side to a coated glass facer (CGF). This panel comes standard with ReadyFlash Technology. Utilize the dark size to increase surface temperatures up to 50°F above ambient temperatures or the light side to decrease temperatures up to 10°F below ambient temperatures.

Available Thicknesses: 0.5" – 4.5"

Available Panel Sizes: 4' x 4' and 4' x 8'

R-Value: 2.8 – 26.8

Insulation Attachment Type: Mechanically Fastened, Fully Adhered with Flexible FAST

Membrane Attachment Type: Mechanically Fastened, Fully Adhered, Ballasted



SecurShield NH

ReadyFlash
TECHNOLOGY

An LBC "Red List Free" rigid roof insulation panel composed of a closed-cell polyisocyanurate foam core bonded to premium-performance coated glass contains zero halogenated flame retardants facers and comes with ReadyFlash Technology. The dark side can raise surface temperatures by up to 50°F above ambient temperatures, while the light side can lower them by up to 10°F.

Available Thicknesses: 0.5" – 4.5"

Available Panel Sizes: 4' x 4' and 4' x 8'

R-Value: 2.8 – 26.8

Insulation Attachment Type: Mechanically Fastened, Fully Adhered with Flexible FAST

Membrane Attachment Type: Mechanically Fastened, Fully Adhered, Ballasted



SecurShield RapidLock

A rigid roof insulation panel composed of a closed-cell polyisocyanurate foam core bonded on each side to glass-reinforced felt. The RapidLock roofing system is an attachment method in which the insulation panel acts as the hook and the FleeceBACK membrane acts as the loop for a fully adhered, adhesiveless system.

Available Thicknesses: 2.0" and 2.6"

Available Panel Size: 4' x 8'

R-Value: 5.7 per inch

Insulation Attachment Type: Mechanically

Fastened or Fully Adhered with Flexible FAST Adhesive

Membrane Attachment Type: Hook and Loop with FleeceBACK RapidLock Membranes



Insulation

InsulBase Tapered

A sloped rigid roof insulation panel composed of a closed-cell polyisocyanurate foam core bonded during the manufacturing process to fiber-reinforced paper facers. This panel is available in 20 and 25 PSI.

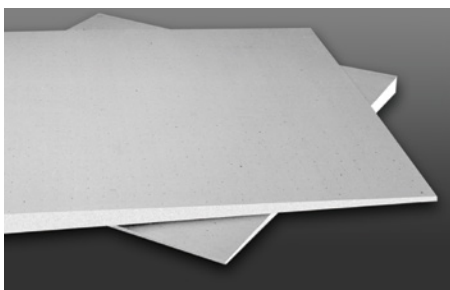
Available Slopes: $\frac{1}{8}$ ", $\frac{1}{4}$ ", $\frac{3}{8}$ ", and $\frac{1}{2}$ " per foot

Available Panel Sizes: 4' x 4' and 4' x 8'

R-Value: 4.3 – 25.2

Insulation Attachment Type: Mechanically Fastened or Fully Adhered with Flexible FAST Adhesive

Membrane Attachment Type: Mechanically Fastened, Fully Adhered, Ballasted



SecurShield Tapered

A rigid roof insulation panel composed of a closed-cell polyisocyanurate foam core laminated on-line to a premium-performance coated glass facer.

Available Slopes (20 psi): $\frac{1}{8}$ ", $\frac{1}{4}$ ", $\frac{3}{8}$ ", and $\frac{1}{2}$ " per foot

Available Slopes (25 psi): $\frac{1}{16}$ ", $\frac{1}{8}$ ", $\frac{3}{16}$ ", $\frac{1}{4}$ ", $\frac{3}{8}$ ", and $\frac{1}{2}$ " per foot

Available Panel Sizes: 4' x 4' and 4' x 8'

R-Value: 3.6 – 25.2

Insulation Attachment Type: Mechanically Fastened or Fully Adhered with Flexible FAST Adhesive

Membrane Attachment Type: Mechanically Fastened, Fully Adhered, Ballasted



Target Sump and Hinged Target Sump

8' x 8' Hinged Target Sumps are pre-assembled with Tapered H-Shield or Tapered H-Shield CG 25 PSI. Sumps have perimeter edge thicknesses of 1.5", 2", 2.5", or 3".

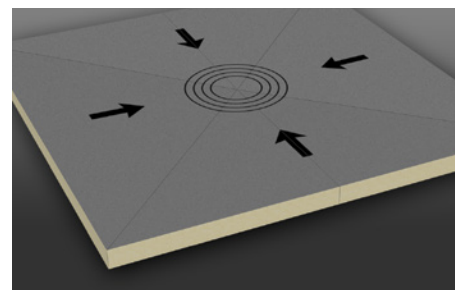
R-Value: 6.67 – 13.28

4' x 4' Target Sumps are manufactured with Tapered H-Shield CG 25 PSI only. This sump comes pre-assembled with a $\frac{1}{2}$ " slope in thicknesses of 0.5" to 2.0"

R-Value: 6.67 – 15.22

Insulation Attachment Type: Mechanically Fastened or Fully Adhered with Flexible FAST Adhesive

Membrane Attachment Type: Mechanically Fastened, Fully Adhered, Ballasted



Insulfoam EPS

A rigid insulation board composed of closed-cell, lightweight expanded polystyrene (EPS).

Available Thicknesses: $\frac{1}{4}$ " – 10"

Available Panel Sizes: 4' x 4' and 4' x 8'

R-Value: 3.85 – 4.6

Insulation Attachment Type: Mechanically Fastened or Fully Adhered

Membrane Attachment Type: Mechanically Fastened, Fully Adhered*, Ballasted



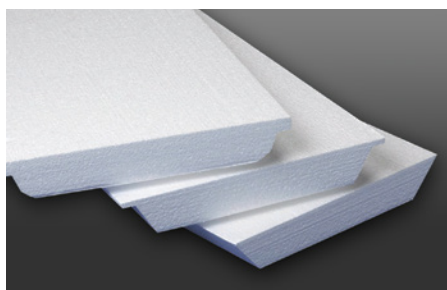
Insulfoam EPS Flute Fill

A custom-made, engineered insulation consisting of a superior closed-cell, lightweight expanded polystyrene (EPS).

R-Value: 3.85 per inch

Insulation Attachment Type: Mechanically Fastened or Fully Adhered

Membrane Attachment Type: Mechanically Fastened, Fully Adhered, Ballasted



Insulfoam Tapered EPS

An engineered insulation made of closed-cell, lightweight expanded polystyrene (EPS).

Available Thicknesses: $\frac{1}{8}$ " – 40.0"

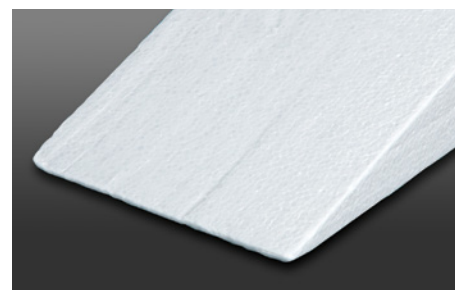
Available Slope: No Limitations to Available Slope Per Foot

Available Panel Sizes: 4' x 4' and 4' x 8'

R-Value: 3.85 – 4.6

Insulation Attachment Type: Mechanically Fastened or Fully Adhered

Membrane Attachment Type: Mechanically Fastened, Fully Adhered*, Ballasted



ChannelDry® EPS

A lightweight, closed-cell expanded polystyrene to be used in conjunction with one-way and two-way relief vents that allows the installation of the roof system to begin upon structural cure of concrete.

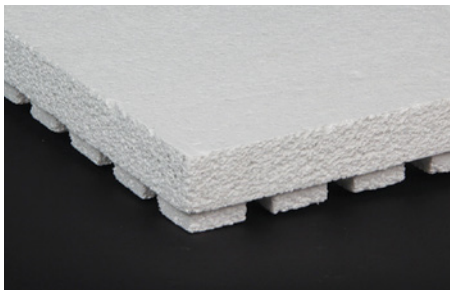
Available Thickness: 2.0"

Available Panel Size: 4' x 4'

R-Value: 7.1

Insulation Attachment Type: Mechanically Fastened, Fully Adhered

Membrane Attachment Type: Mechanically Fastened, Fully Adhered*, Ballasted, Induction Welded



Owens Corning FOAMULAR®

XPS insulation is a closed-cell, moisture-resistant, rigid foam board ideal for many roofing applications, including single-ply, inverted roof membrane assemblies, tapered, vegetative roofs, plaza decks, and recover roofing.

Products Available: THERMAPINK 25 (Type IV), FOAMULAR 404 (Type VI), FOAMULAR 604 (Type VII), FOAMULAR Tapered Products

R-Value: 0.5 per inch

Insulation Attachment Type: Mechanically Fastened, Fully Adhered

Membrane Attachment Type: Mechanically Fastened, Fully Adhered*



DuPont Styrofoam Brand Deckmate Plus

Extruded polystyrene foam insulation is designed specifically to provide membrane support for conventional low-slope roof applications.

Available Thicknesses: 1.0" – 4.0"

Available Panel Sizes: 2' x 8' and 4' x 8'

R-Value: 5.0 per inch

Insulation Attachment Type: Fully Adhered

Membrane Attachment Type: Fully Adhered*



ROXUL TOPROCK® DD and TOPROCK DD Plus

Rigid mineral wool insulation boards with rigid upper surfaces for durability and enhanced strength.

Available Thicknesses: 2.0" – 6.0"

Available Panel Size: 4' x 4'

R-Value: 3.8 per inch

Insulation Attachment Type: Mechanically Fastened or Fully Adhered with Flexible FAST Adhesive

Membrane Attachment Type: Mechanically Fastened, Fully Adhered, Ballasted



*Fully adhered membrane attachment when utilizing a coverboard.

For a full listing of Insulation Product Numbers see page 53

Cover Board

InsulBase HD

A polyiso cover board bonded to glass-reinforced facer on both sides that can be used in both re-roofing and new construction.

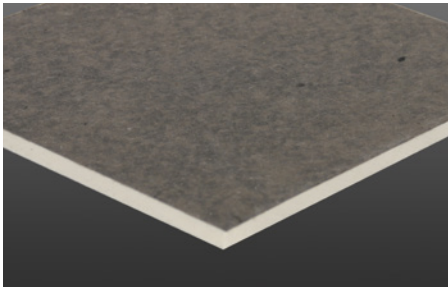
Available Thickness: ½"

Available Panel Sizes: 4' x 4' and 4' x 8'

R-Value: 2.5

Cover Board Attachment Type: Mechanically Fastened

Membrane Attachment Type: Mechanically Fastened



SecurShield HD

ReadyFlash
TECHNOLOGY

A polyiso cover board laminated to a coated glass fiber-mat facer that can be used in re-roofing and new construction. This panel comes standard with ReadyFlash Technology. Utilize the dark size to increase surface temperatures up to 50°F above ambient temperatures or the light side to decrease temperatures up to 25°F below ambient temperatures.

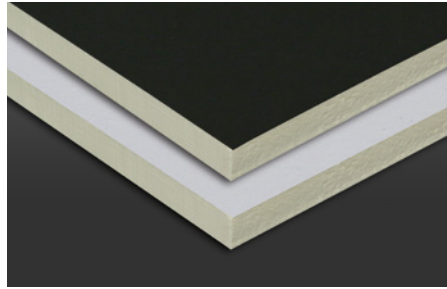
Available Thickness: ½"

Available Panel Sizes: 4' x 4' and 4' x 8'

R-Value: 2.5

Cover Board Attachment Type: Mechanically Fastened or Fully Adhered with Flexible FAST Adhesive

Membrane Attachment Type: Mechanically Fastened or Fully Adhered



SecurShield HD Plus

A polyiso cover board laminated to a coated glass fiber-mat facer with a scrim on one side of the board.

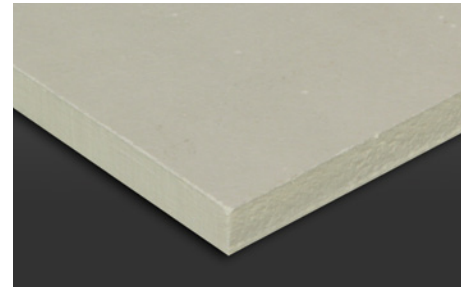
Available Thickness: ½"

Available Panel Sizes: 4' x 4' and 4' x 8'

R-Value: 2.5

Cover Board Attachment Type: Mechanically Fastened or Fully Adhered with Flexible FAST Adhesive

Membrane Attachment Type: Mechanically Fastened or Fully Adhered



SecurShield HD RL

A cover board hook and loop attachment system that can be utilized with Carlisle FleeceBACK membranes.

Available Thickness: ½"

Available Panel Size: 4' x 8'

R-Value: 2.5

Cover Board Attachment Type: Mechanically Fastened or Fully Adhered with Flexible FAST Adhesive

Membrane Attachment Type: Hook and Loop with FleeceBACK RapidLock Membranes



SecurShield HD Composite

A composite insulation panel comprised of ½" HD polyiso cover board laminated to SecurShield rigid polyiso insulation.

Available Thicknesses: 1.5", 1.8", 2.0", 2.5" 3.0" 3.5", 3.6", 4.0"

Available Panel Sizes: 47.5" x 95.5" or 47.5" x 47.5"

R-Value: 8.2 – 23.0

Cover Board Attachment Type: Mechanically Fastened or Fully Adhered with Flexible FAST Adhesive

Membrane Attachment Type: Mechanically Fastened or Fully Adhered



SecurShield HD Composite RL

A hook and loop attachment system composed of a ½" HD polyiso cover board laminated to SecurShield rigid polyiso insulation that can be utilized with Carlisle FleeceBACK membranes.

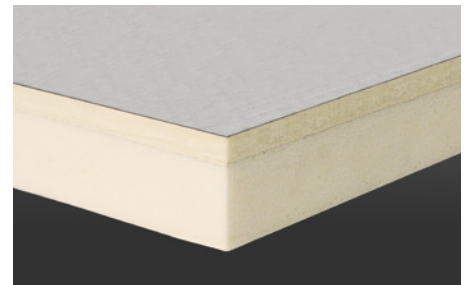
Available Thicknesses: 2.0", 2.5", 3.0", 3.5", 4.0"

Available Panel Sizes: 47.5" x 95.5" and 47.5" x 47.5"

R-Value: 11.1 – 23.0

Cover Board Attachment Type: Mechanically Fastened or Fully Adhered with Flexible FAST Adhesive

Membrane Attachment Type: Hook and Loop with FleeceBACK RapidLock Membranes



StormBase® Composite

A rigid roof insulation composite panel composed of a polyiso insulation panel manufactured on-line to 7/16" OSB.

Available Thicknesses: 1.5", 2.0", 2.5", 3.0", 3.5", 4.0"

Available Panel Sizes: 47.5" x 95.5" routed on 4 sides or 47.5" x 47.5" routed on 3 sides

R-Value: 6.3-21.1

Cover Board Attachment Type: Mechanically Fastened or Fully Adhered with Flexible FAST Adhesive

Membrane Attachment Type: Mechanically Fastened or Fully Adhered



SecurShield HD EPS Composite

A premium composite insulation consisting of a closed-cell, lightweight expanded polystyrene (EPS) bonded to a high-density polyisocyanurate cover board. It's the only EPS-Polyiso composite in the roofing industry.

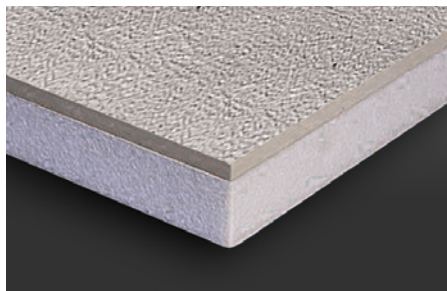
Available Thicknesses: 1.5" – 6"

Available Panel Size: 4' x 8'

R-Value: 6.37 – 23.68

Cover Board Attachment Type: Mechanically Fastened or Fully Adhered

Membrane Attachment Type: Mechanically Fastened or Fully Adhered



DensDeck®

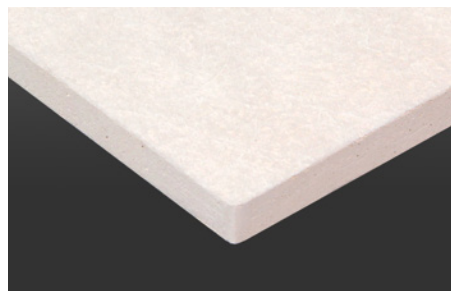
A gypsum core with embedded glass mat facers on the top and bottom of the board.

Available Thicknesses: 1/4", 1/2", 5/8"

Available Panel Size: 4' x 8'

R-Value: .28 – .67

Cover Board Attachment Type: Mechanically Fastened or Fully Adhered with Flexible FAST Adhesive
Membrane Attachment Type: Mechanically Fastened or Fully Adhered



DensDeck Prime

A gypsum core with embedded glass mat facers on the top and bottom of the board. This board is typically used over insulation.

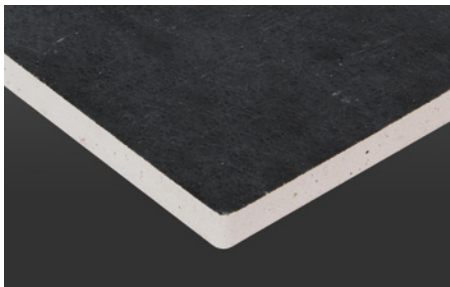
Available Thicknesses: 1/4", 1/2", 5/8"

Available Panel Size: 4' x 4' and 4' x 8'

R-Value: .28 – .67

Cover Board Attachment Type: Mechanically Fastened or Fully Adhered with Flexible FAST Adhesive

Membrane Attachment Type: Fully Adhered



DensDeck StormX™ Prime

A reinforced gypsum cover board with an enhanced moisture-resistant core and coated glass mat facers.

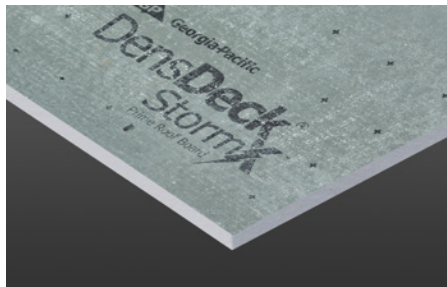
Available Thickness: 5/8"

Available Panel Size: 4' x 4' and 4' x 8'

R-Value: .67

Cover Board Attachment Type: Mechanically Fastened or Fully Adhered with Flexible FAST Adhesive

Membrane Attachment Type: Mechanically Fastened or Fully Adhered



DEXcell® Glass Mat

Coated fiberglass facers and an enhanced mold-resistant gypsum core.

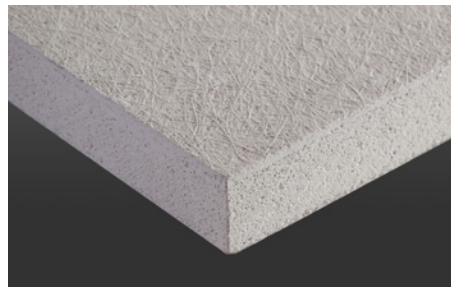
Available Thicknesses: 1/4", 1/2", 5/8"

Available Panel Size: 4' x 8'

R-Value: .23 – .5

Cover Board Attachment Type: Mechanically Fastened

Membrane Attachment Type: Mechanically Fastened or Ballasted



Cover Board

DEXcell FA® Glass Mat

Heavy-duty coated fiberglass facers and an enhanced mold- and moisture-resistant gypsum core.

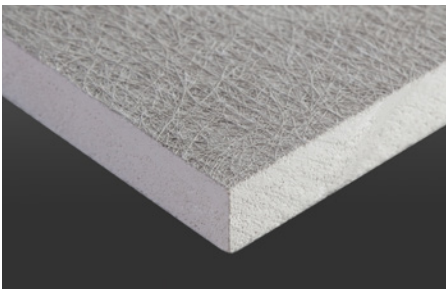
Available Thicknesses: ¼", ½", ⅝"

Available Panel Sizes: 4' x 4' and 4' x 8'

R-value: .23 – .5

Cover Board Attachment Type: Mechanically Fastened or Fully Adhered

Membrane Attachment Type: Fully Adhered



DEXcell FA VSH® Glass Mat

A reinforced gypsum panel with an enhanced gypsum core and heavy-duty coated glass mat facers.

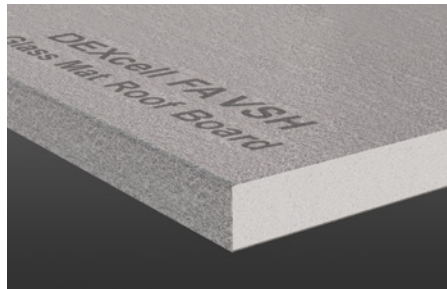
Available Thickness: ⅝"

Available Panel Sizes: 4' x 4' and 4' x 8'

R-value: .5

Cover Board Attachment Type: Mechanically Fastened or Fully Adhered

Membrane Attachment Type: Mechanically Fastened or Fully Adhered



USG SECUROCK® UltraLight Coated Glass Mat

A specially treated gypsum core and high-performance glass-mat facers. The top facer has been coated for adhered applications.

Available Thicknesses: ¼", ½", ⅝"

Available Panel Size: 4' x 4' and 4' x 8'

R-value: .36 – .54

Cover Board Attachment Type: Mechanically Fastened

Membrane Attachment Type: Mechanically Fastened or Fully Adhered



USG SECUROCK UltraLight Glass Mat

A specially treated gypsum core and high-performance glass-mat facers.

Available Thicknesses: ¼", ½", ⅝"

Available Panel Size: 4' x 8'

R-value: .36-.54

Cover Board Attachment Type: Mechanically Fastened

Membrane Attachment Type: Mechanically Fastened



USG SECUROCK Gypsum Fiber

A fiber-reinforced board with a uniform composition which give the panel superior strength and water resistance through to the core.

Available Thicknesses: ¼", ⅜", ½", ⅝"

Available Panel Size: 4' x 4' and 4' x 8'

R-value: .2 – .6

Cover Board Attachment Type: Mechanically Fastened

Membrane Attachment type: Fully Adhered



DEXcell Cement

Portland cement and lightweight aggregate with heavy-duty fiberglass-mesh facers.

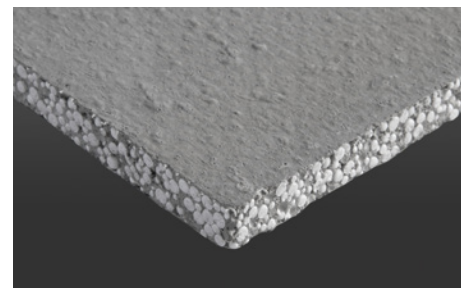
Available Thicknesses: ⅝", 7/16"

Available Panel Sizes: 4' x 4' and 4' x 8'

R-value: .28 – .4

Cover Board Attachment Type: Mechanically Fastened or Fully Adhered

Membrane Attachment Type: Mechanically Fastened, Fully Adhered, or Ballasted



Blue Ridge Fiberboard STRUCTODEK® (HP Recovery Board)

Wood fibers and additives; treated to promote adhesion of membranes and reduce adhesive soak-in.

Available Thicknesses: ½" and 1"

Available Panel Sizes: 4' x 4' and 4' x 8'

R-value: 1.3 – 2.6

Cover Board Attachment Type: Mechanically Fastened or Fully Adhered with Flexible FAST Adhesive

Membrane Attachment Type: Mechanically Fastened, Fully Adhered, or Ballasted



R-Tech® Fanfold Recovery Board

A high-performance rigid insulation of lightweight expanded polystyrene (EPS) with advanced polymeric laminate facers. This product is available with factory-adhered metallic-reflective facers, white facers, or a combination of the two.

Available Thicknesses: ⅜", ½", ¾"

Available Panel Size: 4' x 50'

R-value: 3.85 – 5.00

Recovery Board Attachment Type: Mechanically Fastened

Membrane Attachment Type: Mechanically Fastened or Ballasted



EPDM Membrane

Sure-Seal 45-mil FR Kleen Non-Reinforced EPDM Membrane

Code	Sheet Sizes
305565	10' x 50'
323077	10' x 100'

Sure-Seal 60-mil FR Kleen Non-Reinforced EPDM Membrane

Code	Sheet Sizes
348767	10' x 25' w 3" FAT – 12 Pk
322413	10' x 50' w/ 3" FAT – 1 Pk
300175	10' x 50'
322412	10' x 100' w/ 3" FAT – 1 Pk
329863	10' x 100' w/ 6" FAT – 1 Pk
300176	10' x 100'

Sure-Seal 90-mil FR Kleen Non-Reinforced EPDM Membrane

Code	Sheet Sizes
317402	10' x 50' w/ 6" FAT – 1 Pk
310295	10' x 50'
317283	10' x 100' w/ 3" FAT – 1 Pk
317351	10' x 100' w/ 6" FAT – 1 Pk
300178	10' x 100'

Sure-Seal 45-mil FR Non-Reinforced EPDM Membrane

Code	Sheet Sizes
300038	10' x 50'
300039	10' x 100'
303381	16.5' x 100' – No Fold
300181	20' x 50'
307334	20' x 100' w/ 3" FAT
300182	20' x 100'
309027	25' x 100' w/ 3" FAT – One Fold
323273	30' x 100' w/ 3" FAT – One Fold

Sure-Seal 60-mil FR Non-Reinforced EPDM Membrane

Code	Sheet Sizes
301856	7' x 50'
300088	10' x 50'
300089	10' x 100'
301854	12' x 50'
301855	12' x 100'
300371	15' x 100'
317590	16.5' x 100' w/ 3" FAT – No Fold
318225	16.5' x 100' w/ 6" FAT – No Fold
300385	16.5' x 100' – No Fold
300372	20' x 50'
307290	20' x 100' w/ 3" FAT
307399	20' x 100' w/ 6" FAT
300373	20' x 100'
308710	25' x 100' w/ 3" FAT – One Fold
310056	25' x 100' w/ 6" FAT – One Fold
300386	25' x 100' – One Fold
317592	30' x 100' w/ 3" FAT – One Fold
318663	30' x 100' w/ 6" FAT – One Fold
300378	30' x 100' – One Fold
300377	30' x 100'
300381	40' x 100'
300383	50' x 100'
300384	50' x 150'

Sure-Seal 45-mil Non-Reinforced EPDM Membrane (for Ballasted Systems)

Code	Sheet Sizes
302331	10' x 50'
302303	10' x 100'
302332	15' x 100'
302349	20' x 50'
302306	20' x 100'
300367	25' x 100'
302350	30' x 50'
302308	30' x 100'
302351	40' x 100'
302335	40' x 150'
300354	45' x 100'
300358	50' x 100'
300359	50' x 125'
300360	50' x 150'
300361	50' x 200'

EPDM Membrane

Sure-Tough™ 45-mil Kleen Reinforced EPDM Membrane

Code	Sheet Sizes
323140	10' x 100' w/ 6" FAT – 1 Pk
307761	10' x 100' w/ 6" FAT – 2 Pk
300058	10' x 100'
343161	5' x 100'

Sure-Tough 60-mil Kleen Reinforced EPDM Membrane

Code	Sheet Sizes
323895	6.5' x 100' w/ 6" FAT – 2 Pk
309430	8' x 100' w/ 6" FAT – 2 Pk
326613	10' x 50' w/ 6" FAT – 1 Pk
300065	10' x 50'
319394	10' x 100' w/ 3" FAT – 1 Pk
322414	10' x 100' w/ 6" FAT – 1 Pk
307763	10' x 100' w/ 6" FAT – 2 Pk
300066	10' x 100'
343162	5' x 100'
347334	5' x 200'

Sure-Tough 75-mil Kleen Reinforced EPDM Membrane

Code	Sheet Sizes
300069	10' x 50'
318960	10' x 100' w/ 3" FAT – 1 Pk
318891	10' x 100' w/ 6" FAT – 1 Pk
300070	10' x 100'

Sure-White 60-mil Non-Reinforced EPDM Membrane

Code	Sheet Sizes
301925	10' x 50'
322415	10' x 100' w/ 3" FAT – 1 Pk
319144	10' x 100' w/ 6" FAT – 1 Pk
301926	10' x 100'
319145	16.5' x 100' – w/ 6" FAT – No Fold
310383	16.5' x 100' – No Fold
315704	20' x 100' w/ 3" FAT
321510	20' x 100' w/ 6" FAT
310110	20' x 100' – One Fold

Sure-White 90-mil Non-Reinforced EPDM Membrane

Code	Sheet Sizes
325483	10' x 100' w/ 3" FAT – 1 Pk
319824	10' x 100' w/ 6" FAT – 1 Pk
316476	10' x 100'

Sure-White 60-mil Reinforced EPDM Membrane

Code	Sheet Sizes
348766	10' x 100'
348781	10' x 100' w/ 6" FAT – 1 Pk

Sure-Seal 60-mil Non-Reinforced SAT EPDM Membrane

Code	Sheet Sizes
330064	10' x 50' w/ 3" FAT
327447	10' x 100' w/ 3" FAT
341303	5' x 40' – 12/Pallet

Sure-White 60-mil Non-Reinforced SAT EPDM Membrane

Code	Sheet Sizes
332378	10' x 50' w/ 3" FAT
332377	10' x 100' w/ 3" FAT
359506	5' x 40' – 12/Pallet

Sure-Tough 60-mil Reinforced SAT EPDM Membrane

Code	Sheet Sizes
326417	10' x 50' w/ 3" FAT
326418	10' x 100' w/ 3" FAT

Sure-Seal 60-mil Cool Gray Non-Reinforced EPDM Membrane

Code	Sheet Sizes
357838	10' x 50'
349367	10' x 100'
357837	10' x 100' w/ 3"

TPO Membrane

Sure-Weld 45-mil Reinforced Standard TPO

Code	Sheet Sizes
300425	4' X 100' – White
330905	4' X 300' – White
303386	6' X 100' – White
326316	6' X 300' – White
300426	8' X 100' – White
332863	10' X 100' – White
326877	8' X 200' – White
303485	10' X 200' – White
303365	12' X 100' – White
309416	12' X 200' – White
349020	16' X 100' – White
302969	4' X 100' – Gray
303390	6' X 100' – Gray
302971	8' X 100' – Gray
302940	10' X 100' – Gray
303359	12' X 100' – Gray
349024	16' X 100' – Gray
302976	4' X 100' – Tan
303467	6' X 100' – Tan
302979	8' X 100' – Tan
302980	10' X 100' – Tan
303362	12' X 100' – Tan
349025	16' X 100' – Tan

Sure-Weld 60-mil Reinforced SAT TPO

Code	Sheet Sizes
359365	10' x 50' – White
359366	10' x 100' – White
359363	10' x 100' – Grey
359364	10' x 100' – Tan
355392	12' x 100' – White
357864	12' x 100' – Gray
357865	12' x 100' – Tan
359367	10' x 100' – White with APEEL

Sure-Weld 80-mil Reinforced SAT TPO

Code	Sheet Sizes
359362	10' x 100' – White
359417	10' x 100' – Gray
359416	10' x 100' – Tan
359619	12' x 100' – White
359618	12' x 100' – Gray
359617	12' x 100' – Tan

Sure-Weld 60-mil Reinforced Standard TPO

Code	Sheet Sizes
333103	4' X 100' – White
330906	4' X 300' – White
300437	5' x 100' – White
332860	6' X 100' – White
330907	6' X 300' – White
332862	8' X 100' – White
330930	10' X 100' – White
332861	12' X 100' – White
329726	12' X 200' – White
349017	16' X 100' – White
302950	4' X 100' – Gray
302972	5' x 100' – Gray
303391	6' X 100' – Gray
302951	8' X 100' – Gray
302973	10' X 100' – Gray
303361	12' X 100' – Gray
349026	16' X 100' – Gray
302981	4' X 100' – Tan
302982	5' x 100' – Tan
303468	6' X 100' – Tan
302983	8' X 100' – Tan
302984	10' X 100' – Tan
303364	12' X 100' – Tan
349027	16' X 100' – Tan

Sure-Weld 80-mil Reinforced Standard TPO

Code	Sheet Sizes
303309	4' X 100' – White
303310	5' x 100' – White
303389	6' X 100' – White
303311	8' X 100' – White
303312	10' X 100' – White
303370	12' X 100' – White
349023	16' X 100' – White
303412	4' X 100' – Gray
303393	6' X 100' – Gray
303414	8' X 100' – Gray
303415	10' X 100' – Gray
303416	12' X 100' – Gray
349028	16' X 100' – Gray
309191	4' X 100' – Tan
307498	6' X 100' – Tan
309192	8' X 100' – Tan
307492	10' X 100' – Tan
349029	16' X 100' – Tan

TPO Membrane

Sure-Weld TPO Reinforced Minimum Thickness

Code	Sheet Sizes
309732	6' X 100' – White
309733	8' X 100' – White
309734	10' X 100' – White

Sure-Weld 60-mil Reinforced APEEL TPO

Code	Sheet Sizes
330800	4' X 100' – White
324180	6' X 100' – White
330801	8' X 100' – White
324182	10' X 100' – White
330802	12' X 100' – White
330803	4' X 100' – Gray
325389	6' X 100' – Gray
330804	8' X 100' – Gray
325390	10' X 100' – Gray
330805	12' X 100' – Gray
330806	4' X 100' – Tan
325422	6' X 100' – Tan
330807	8' X 100' – Tan
325401	10' X 100' – Tan
330808	12' X 100' – Tan

Sure-Weld 80-mil Reinforced APEEL TPO

Code	Sheet Sizes
330809	4' X 100' – White
325397	6' X 100' – White
330810	8' X 100' – White
325398	10' X 100' – White
330811	12' X 100' – White
330812	4' X 100' – Gray
325392	6' X 100' – Gray
330813	8' X 100' – Gray
325394	10' X 100' – Gray
330814	12' X 100' – Gray
330815	4' X 100' – Tan
325423	6' X 100' – Tan
330816	8' X 100' – Tan
325424	10' X 100' – Tan
330817	12' X 100' – Tan

Sure-Weld 60-mil TPO with SeamShield

Code	Sheet Sizes
359090	10' X 100' – White
359095	12' X 100' – White
359099	10' X 100' – Gray
359100	12' X 100' – Gray
359101	10' X 100' – Tan
359102	12' X 100' – Tan

Sure-Weld 80-mil TPO with SeamShield

Code	Sheet Sizes
359382	10' X 100' – White
359381	12' X 100' – White
359377	10' X 100' – Gray
359376	12' X 100' – Gray
359373	10' X 100' – Tan
359372	12' X 100' – Tan

Sure-Weld High Slope TPO

Code	Sheet Sizes
315615	45-mil 5' x 100' – White
303002	45-mil 10' x 100' – White
315617	60-mil 5' x 100' – White
303003	60-mil 10' x 100' – White
315645	80-mil 10' x 100' – White
360581	60-mil 16' x 100' – White
360582	80-mil 16' x 100' – White
362172	60-mil 16' x 100' – Gray
362173	80-mil 16' x 100' – Gray

Sure-Weld Color Palette 60-mil Reinforced High Slope TPO

Code	Sheet Sizes
332586	10' x 100' – Medium Bronze
333148	5' x 100' – Medium Bronze
330036	10' x 100' – Rock Brown
330034	5' x 100' – Rock Brown
330026	10' x 100' – Terra Cotta
330025	5' x 100' – Terra Cotta
330030	10' x 100' – Slate Gray
330029	5' x 100' – Slate Gray
330028	10' x 100' – Patina Green
330027	5' x 100' – Patina Green

TPO Membrane

Sure-Weld Color Palette 80-mil Reinforced High Slope TPO

Code	Sheet Sizes
333211	10' x 100' – Medium Bronze
333210	5' x 100' – Medium Bronze
333193	10' x 100' – Rock Brown
333192	5' x 100' – Rock Brown
333195	10' x 100' – Terra Cotta
333194	5' x 100' – Terra Cotta
333199	10' x 100' – Slate Gray
333198	5' x 100' – Slate Gray
333197	10' x 100' – Patina Green
333196	5' x 100' – Patina Green

Sure-Weld Spectro-Weld

Code	Sheet Sizes
317440	45-mil 10' x 100'
316634	60-mil 10' x 100'

PVC Membrane

Sure-Flex™ 50-mil Reinforced PVC

Code	Sheet Sizes
323153	10' X 100' – White
323154	81" X 100' – White
323440	5' x 100' – White
323441	40.5" x 100' – White
324837	10' x 100' – Gray
323442	81" x 100' – Gray
324838	5' x 100' – Gray
323443	40.5" x 100' – Gray
325763	10' x 100' – Tan
325764	5' x 100' – Tan

Sure-Flex 80-mil Reinforced PVC

Code	Sheet Sizes
323155	10' x 75' – White
323156	81" x 75' – White
323456	5' x 75' – White
323457	40.5" x 75' – White
324851	10' x 75' – Gray
323458	81" x 75' – Gray
324852	5' x 75' – Gray
323459	40.5" x 75' – Gray
334229	10' x 75' – Light Gray
334430	5' X 75' – Light Gray
335756	10' x 75' – Slate Gray
335757	5' x 75' – Slate Gray
325767	10' x 75' – Tan
325768	5' x 75' – Tan

Sure-Flex 60-mil Reinforced PVC

Code	Sheet Sizes
332868	10' x 100' – White
323152	81" x 100' – White
323447	5' x 100' – White
323448	40.5" x 100' – White
324839	10' x 100' – Gray
323451	81" x 100' – Gray
324850	5' x 100' – Gray
323452	40.5" x 100' – Gray
334227	10' x 100' – Light Gray
334228	5' X 100' – Light Gray
335754	10' x 100' – Slate Gray
335755	5' x 100' – Slate Gray
325765	10' x 100' – Tan
323453	81" x 100' – Tan
325766	5' x 100' – Tan
323454	40.5" x 100' – Tan

Sure-Flex 60-mil PVC & KEE HP with APEEL Protective Film

Code	Sheet Sizes
335214	PVC 10' x 100' – White
335864	PVC 5' X 100' – White
331340	KEE HP 10' X 100' – White
335866	KEE HP 5' X 100' – White

PVC Membrane

Sure-Flex 80-mil PVC & KEE HP with APEEL Protective Film

Code	Sheet Sizes
335215	PVC 10' X 75' – White
335865	PVC 5' X 75' – White
331309	KEE HP 10' X 75' – White
335867	KEE HP 5' X 75' – White

Sure-Flex 60-mil Minimum Thickness PVC

Code	Sheet Sizes
323449	10' X 100' – White
323450	5' x 100' – White
336077	10' x 100' – Gray
336078	5' x 100' – Gray
357923	10' x 100' – Light Gray
333327	10' x 100' – Tan

Sure-Flex 80-mil Minimum Thickness PVC

Code	Sheet Sizes
326509	10' x 75' – White
326510	5' x 75' – White
357924	10' x 75' – Light Gray

Sure-Flex 60-mil FRS Reinforced PVC (All Minimum Thickness)

Code	Sheet Sizes
323467	10' X 100' – White
334852	10' x 100' – Gray
334856	10' x 100' – Tan
334861	10' x 100' – Light Gray

Sure-Flex 80-mil FRS Reinforced PVC (All Minimum Thickness)

Code	Sheet Sizes
323470	10' x 75' – White
334854	10' X 75' – Gray
334859	10' X 75' – Tan
334862	10' x 75' – Light Gray

Sure-Flex 50-mil KEE HP

Code	Sheet Sizes
323473	10' x 100' – White
323474	5' x 100' – White
323475	10' x 100' – Gray
323476	5' x 100' – Gray
323477	10' x 100' – Tan
323478	5' x 100' – Tan

Sure-Flex 60-mil KEE HP

Code	Sheet Sizes
323479	10' x 100' – White
323480	5' x 100' – White
334702	10' x 100' – Light Gray
323481	10' x 100' – Gray
323482	5' x 100' – Gray
323483	10' x 100' – Tan
323484	5' x 100' – Tan

Sure-Flex 80-mil KEE HP

Code	Sheet Sizes
323485	10' x 75' – White
323486	5' x 75' – White
323487	10' x 75' – Gray
323488	5' x 75' – Gray
323489	10' x 75' – Tan
323490	5' x 75' – Tan
336118	10' x 75' – Light Gray

Sure-Flex 60-mil KEE HP Minimum Thickness

Code	Sheet Sizes
326651	10' x 100' – White
326652	5' x 100' – White
326656	10' x 100' – Tan
326657	5' x 100' – Tan
334704	10' x 100' – Gray
334705	5' x 100' – Gray

Sure-Flex 80-mil KEE HP Minimum Thickness

Code	Sheet Sizes
326654	10' x 75' – White
326655	5' x 75' – White

FleeceBACK Membrane

Sure-Seal FleeceBACK EPDM Membrane with FAT™ – Black

Code	Sheet Sizes
309787	100-mil 5' X 40' w/ 3" FAT
300411	100-mil 10' X 50' w/ 3" FAT
300413	100-mil 10' X 100' w/ 3" FAT
309788	115-mil 5' X 40' w/ 3" FAT
300416	115-mil 10' X 50' w/ 3" FAT
300418	115-mil 10' X 100' w/ 3" FAT
303839	115-mil 10' X 100' w/ 6" FAT
309769	145-mil 10' X 50' w/ 6" FAT
315138	145-mil 10' X 100' w/ 6" FAT

Sure-Seal AFX EPDM Membrane with FAT – Black

Code	Sheet Sizes
309789	90-mil 4.5' X 50' w/ 3" FAT
303827	90-mil 10' X 50' w/ 3" FAT
303826	90-mil 10' X 100' w/ 3" FAT
303829	90-mil 10' X 100' w/ 6" FAT
309790	105-mil 4.5' X 50' w/ 3" FAT
315512	105-mil 4.5' X 50' w/ 6" FAT
303833	105-mil 10' X 50' w/ 3" FAT
303832	105-mil 10' X 100' w/ 3" FAT
303834	105-mil 10' X 100' w/ 6" FAT

Sure-White FleeceBACK EPDM Membrane with FAT

Code	Sheet Sizes
316012	115-mil 5' X 40' w/ 3" FAT
303896	115-mil 10' X 100' w/ 3" FAT
316177	115-mil 10' X 100' w/ 6" FAT
316473	145-mil 10' X 50' w/ 6" FAT
322781	145-mil 10' X 100' w/ 6" FAT

Sure-White AFX EPDM Membrane with FAT

Code	Sheet Sizes
318950	105-mil 4.5' X 50' w/ 6" FAT

FleeceBACK RapidLock (RL™) EPDM Membrane with FAT – Black

Code	Sheet Sizes
330074	115-mil 10' X 50' w/ 3" FAT
331677	115-mil 10' X 100' w/ 3" FAT
330075	145-mil 10' X 50' w/ 6" FAT
336080	145-mil 10' X 100' w/ 6" FAT

FleeceBACK RapidLock (RL) White EPDM Membrane with FAT – Black

Code	Sheet Sizes
335651	115-mil 10' X 50' w/ 3" FAT
335652	115-mil 10' X 100' w/ 3" FAT
357871	115-mil 10' X 50' w/ 6" FAT
357870	115-mil 10' X 100' w/ 6" FAT
335653	145-mil 10' X 50' w/ 6" FAT
335654	145-mil 10' X 100' w/ 6" FAT

Sure-Weld 100-mil FleeceBACK TPO Membrane

Code	Sheet Sizes
305510	6' X 100' – White
303440	12' X 50' – White
303441	12' X 100' – White
303512	12' X 100' – Gray
305574	12' X 100' – Tan

Sure-Weld 115-mil FleeceBACK TPO Membrane

Code	Sheet Sizes
308642	6' X 100' – White
303443	12' X 50' – White
303444	12' X 100' – White
316621	6' X 100' – Gray
303515	12' X 100' – Gray
325404	6' X 100' – Tan
305607	12' X 100' – Tan
333141	12' X 100' – Medium Bronze
333142	12' X 100' – Rock Brown
333143	12' X 100' – Terra Cotta
333144	12' X 100' – Slate Gray
333145	12' X 100' – Patina Green

Sure-Weld 135-mil FleeceBACK TPO Membrane

Code	Sheet Sizes
318223	6' X 75' – White
318224	12' X 75' – White
319685	12' X 75' – Tan
324415	12' X 75' – Gray

Sure-Weld AFX TPO Membrane – White

Code	Sheet Sizes
307275	120-mil 12' X 75'
308643	120-mil 6' X 75'
307276	135-mil 12' X 75'
308644	135-mil 6' X 75'
317558	155-mil 12' X 75'

FleeceBACK Membrane

Sure-Weld 115-mil FleeceBACK APEEL TPO Membrane

Code	Sheet Sizes
329880	6' X 100' – White
329881	12' X 100' – White
334707	6' X 100' – Gray
332877	12' X 100' – Gray
334706	6' X 100' – Tan
332879	12' X 100' – Tan

Sure-Weld 135-mil FleeceBACK APEEL TPO Membrane

Code	Sheet Sizes
329882	6' X 75' – White
329883	12' X 75' – White
334709	6' X 75' – Gray
332878	12' X 75' – Gray
334708	6' X 75' – Tan
332900	12' X 75' – Tan

FleeceBACK 115-mil RapidLock (RL) TPO Membrane

Code	Sheet Sizes
330021	10' X 50' – White
331676	10' X 100' – White
333072	10' X 50' – Gray
333071	10' X 100' – Gray
340311	10' X 50' – Tan
340312	10' X 100' – Tan

FleeceBACK 135-mil RapidLock (RL) TPO Membrane

Code	Sheet Sizes
335645	10' X 50' – White
335646	10' X 75' – White
335647	10' X 50' – Gray
335648	10' X 75' – Gray
340318	10' X 50' – Tan
340319	10' X 75' – Tan

Sure-Flex KEE-HP FleeceBACK

Code	Sheet Sizes
323499	105-mil 10' x 100' – White
331112	105-mil 10' x 100' – Gray
331113	105-mil 10' x 100' – Tan
323500	115-mil 10' x 100' – White
331114	115-mil 10' x 100' – Gray
336692	115-mil 10' x 100' – Light Gray
331115	115-mil 10' x 100' – Tan
323501	135-mil 10' x 75' – White
331116	135-mil 10' x 75' – Gray
334701	135-mil 10' x 75' – Light Gray
331117	135-mil 10' x 75' – Tan

Sure-Flex FleeceBACK PVC Membrane (Polyester Reinforced)

Code	Sheet Sizes
323491	115-mil 10' x 100' – White
323493	115-mil 10' x 100' – Gray
334431	115-mil 10' x 100' – Light Gray
335758	115-mil 10' x 100' – Slate Gray
323494	115-mil 10' x 100' – Tan
323495	135-mil 10' x 75' – White
323497	135-mil 10' x 75' – Gray
334700	135-mil 10' x 75' – Light Gray
335759	135-mil 10' x 75' – Slate Gray
323498	135-mil 10' x 75' – Tan

Sure-Flex FleeceBACK PVC FRS MIN Membrane (Fiberglass Reinforced)

Code	Sheet Sizes
334863	115-mil 10' x 100' – White
334865	115-mil 10' x 100' – Gray
334867	115-mil 10' x 100' – Tan
334869	115-mil 10' x 100' – Light Gray
334864	135-mil 10' x 75' – White
334866	135-mil 10' x 75' – Gray
334868	135-mil 10' x 75' – Tan
334870	135-mil 10' x 75' – Light Gray

FleeceBACK RapidLock (RL) PVC Membrane – White

Code	Sheet Sizes
332373	115-mil 10' X 50'
332374	115-mil 10' X 100'
335649	135-mil 10' X 50'
335660	135-mil 10' X 75'

Plates

Plates		
Code	Product Description	Quantity
310606	3" Accutrak Plate Flat Bottom (for use with Insulfast Fasteners)	1,000
300750	2" Gyptec Plate	1,000
300751	3" Gyptec Plate	1,000
300601	2" HP Polymer Seam Plate	1,000
310384	2 ¾" HP-Xtra Polymer Seam Plate	1,000
325910	3" TPO isoweld Insulation Plate	500
329461	3" PVC isoweld Insulation Plate	500
317316	3" TPO RHINO Insulation Plates	500

Plates		
Code	Product Description	Quantity
318519	3" PVC RHINO Insulation Plates	500
300598	3" Insulation Fastening Plates	1,000
300763	3" HP Lite-Deck Plate	500
303270	2 ¾" HP-Xtra Piranha Plate®	1,000
300804	2 ¾" HP-X Piranha Plate™	1,000
300599	2" Seam Fastening Plates	1,000
324735	3" SecurFast Insulation Plate	1,000

Fasteners

CD-10		
Code	Product Description	Quantity
302559	2" CD-10 Fastener	500
302561	3" CD-10 Fastener	500
302563	4" CD-10 Fastener	500
302565	5" CD-10 Fastener	500
302567	6" CD-10 Fastener	500
302568	7" CD-10 Fastener	500
302569	8" CD-10 Fastener	500
302570	9" CD-10 Fastener	250
302558	10" CD-10 Fastener	250
302571	11" CD-10 Fastener	250
302572	12" CD-10 Fastener	250

HD 14-10		
Code	Product Description	Quantity
327929	1 ¼" HD 14-10 Fastener	1,000
327940	1 ¾" HD 14-10 Fastener	1,000
300627	2" HD 14-10 Fastener	1,000
300628	3" HD 14-10 Fastener	1,000
300629	4" HD 14-10 Fastener	1,000
300630	5" HD 14-10 Fastener	500
300631	6" HD 14-10 Fastener	500
300632	7" HD 14-10 Fastener	500
300633	8" HD 14-10 Fastener	500
300634	9" HD 14-10 Fastener	500
300635	10" HD 14-10 Fastener	500
300636	11" HD 14-10 Fastener	500
300637	12" HD 14-10 Fastener	250
322740	14" HD 14-10 Fastener	250
322737	16" HD 14-10 Fastener	250
322738	18" HD 14-10 Fastener	250
322739	20" HD 14-10 Fastener	250

Polymer Gyptec		
Code	Product Description	Quantity
300718	2 ½" Polymer Gyptec	500
300719	3" Polymer Gyptec	500
300720	3 ½" Polymer Gyptec	500
300721	4" Polymer Gyptec	500
300722	4 ½" Polymer Gyptec	500
300723	5" Polymer Gyptec	500
300724	5 ½" Polymer Gyptec	500
300725	6" Polymer Gyptec	500
300726	6 ½" Polymer Gyptec	500
300727	7" Polymer Gyptec	500
300728	7 ½" Polymer Gyptec	500
300729	8" Polymer Gyptec	250
300730	8 ½" Polymer Gyptec	250
300731	9" Polymer Gyptec	250
300732	9 ½" Polymer Gyptec	250
300733	10" Polymer Gyptec	250
327949	10 ½" Polymer Gyptec	250
327950	11" Polymer Gyptec	250
327951	11 ½" Polymer Gyptec	250
327952	12" Polymer Gyptec	250

Fasteners

HP		
Code	Product Description	Quantity
300609	1 ¼" HP Fasteners	1,000
319827	2" HP Fasteners	1,000
319828	3" HP Fasteners	1,000
319829	4" HP Fasteners	1,000
300616	5" HP Fasteners	1,000
300617	6" HP Fasteners	1,000
300618	7" HP Fasteners	500
300619	8" HP Fasteners	500
300620	9" HP Fasteners	500
300621	10" HP Fasteners	500
300622	11" HP Fasteners	500
300623	12" HP Fasteners	500
300624	13" HP Fasteners	250
300625	14" HP Fasteners	250
300626	15" HP Fasteners	250

HP		
Code	Product Description	Quantity
300752	2 ⅝" HP Lite-Deck Fastener	500
300753	3" HP Lite-Deck Fastener	500
300754	4" HP Lite-Deck Fastener	500
300755	5" HP Lite-Deck Fastener	250
300756	6" HP Lite-Deck Fastener	250
300757	7" HP Lite-Deck Fastener	250
300758	8" HP Lite-Deck Fastener	250
300759	9" HP Lite-Deck Fastener	125
300760	10" HP Lite-Deck Fastener	125
300761	12" HP Lite-Deck Fastener	125

HP Purlin		
Code	Product Description	Quantity
300799	3 ¾" HP Purlin Fastener	500
300800	4 ¾" HP Purlin Fastener	500
300801	5 ¾" HP Purlin Fastener	500
300802	7" HP Purlin Fastener	500
300803	8" HP Purlin Fastener	500

HP-X		
Code	Product Description	Quantity
300805	2" HP-X Fastener™	1,000
300806	3" HP-X Fastener	1,000
300807	4" HP-X Fastener	1,000
300808	5" HP-X Fastener	500
300809	6" HP-X Fastener	500
300810	7" HP-X Fastener	500
300811	8" HP-X Fastener	500
317667	9" HP-X Fastener	500
300812	10" HP-X Fastener	500
327974	11" HP-X Fastener	500
300813	12" HP-X Fastener	500
300814	14" HP-X Fastener	250
316192	16" HP-X Fastener	250
322734	18" HP-X Fastener	250
322735	20" HP-X Fastener	250
322736	22" HP-X Fastener	125
327943	24" HP-X Fastener	125

HP-Xtra		
Code	Product Description	Quantity
303263	2" HP-Xtra Fastener	500
303264	3" HP-Xtra Fastener	500
303265	4" HP-Xtra Fastener	500
303266	5" HP-Xtra Fastener	500
303267	6" HP-Xtra Fastener	500
303268	7" HP-Xtra Fastener	250
303269	8" HP-Xtra Fastener	250
327948	9" HP-Xtra Fastener	250
315812	10" HP-Xtra Fastener	250
315815	12" HP-Xtra Fastener	250

Insulfast		
Code	Product Description	Quantity
303333	1 ⅝" Insulfast Fastener	1,000
303334	2 ¼" Insulfast Fastener	1,000
321520	3" Insulfast Fastener	1,000
321521	4" Insulfast Fastener	1,000
303339	5" Insulfast Fastener	1,000
303340	6" Insulfast Fastener	1,000
303341	7" Insulfast Fastener	1,000
303342	8" Insulfast Fastener	1,000

Fasteners

Retro Driller

Code	Product Description	Quantity
322729	4" Retro Driller Fastener	500
322730	5" Retro Driller Fastener	500
322731	6" Retro Driller Fastener	500
327960	7" Retro Driller Fastener	500
322732	8" Retro Driller Fastener	500
322733	10" Retro Driller Fastener	500

Additional Accessories

Code	Product Description	Quantity
300876	Metal Fastening Bar 1" X 10'	50 Pcs/Ctn
300878	Term Bar Nail In – 1 ¼"	1,000
300877	Termination Bar 1" X 10'	25 Pcs/Ctn
307313	1.8" Dual Prong Base Sheet Fastener	500

Insulation

InsulBase

Thickness	20 PSI 4x4	20 PSI 4x8	20 PSI 4x12	25 PSI 4x4	25 PSI 4x8
0.5	323588	323589		323590	323591
1.0	316650	316654		316652	316658
1.5	316700	316703	316710	316701	316707
2.0	316821	316825	307143	316822	316829
2.1	323383	323384		305908	323385
2.2	323400	323401	347561	305909	323402
2.3	305746	306074		305910	306238
2.4	323410	323411		305911	306239
2.5	316876	316879	359329	316877	316882
2.6	316918	316920	349237	316919	316922
2.7	305750	306078		305914	306242
2.8	323611	323559		305915	306243
2.9	322050	320129			321750
3.0	316954	316960	316966	316956	316964
3.1	317766	317416		317769	317770
3.2	323413	323414		323415	323416
3.3	305756	306084	349239	305920	306248
3.4	323614	323613		323749	323748
3.5	305758	306086	359330	305922	306250
3.6	323418	323420			306251
3.7	305760	306088		305924	306252
3.8	305761	306089		305925	306253
4.0	317006	317010		317008	317012

Insulation

InsulBase NH

Thickness	20 PSI 4x4	20 PSI 4x8	25 PSI 4x4	25 PSI 4x8
0.5	360211	360191		
1.0	334922	341786		
1.5	360210	332524		
1.8	347274			
1.8	347275 – Double Pack			
2.0	333059	330870	360048	359731
2.0	347281 – Double Pack			
2.3	357227			
2.4	334821	334820	360367	359732
2.5	333058	341924		
2.6	349495		360072	
2.6	349496 – Double Pack			
3.0	333055	331125	360368	359733
3.25	357474			
3.3	334876	334747		
3.3	347276 – Double Pack			
3.5		341787		
4.0	342835	360190		360487
4.0	347280 – Double Pack			
4.5		357473		

InsulBase RapidLock

Thickness	4x8
2.0	330092
2.6	332550

Insulation

SecurShield

Thickness	20 PSI 4x8	20 PSI 4x4	25 PSI 4x8	25 PSI 4x4
0.5	316311	310658	319970	319527
1.0	316677	316673	318196	317470
1.5	316727	316724	316728	316725
2.0	316852	316849	316853	316850
2.1	310088	323391	323393	323202
2.2	315594	323679	306360	306032
2.3	316241	305869	306361	306033
2.4	316129	321616	306362	323303
2.5	316898	316895	316899	316896
2.6	316925	316923	323274	316924
2.7	319502	323820	306365	306037
2.8	306202	323070	306366	306038
2.9	306203	305875		306039
3.0	316981	316979	316982	316980
3.1	318140	319450	318656	317773
3.2	319965	305878	318402	306042
3.3	315885	317682	317676	319712
3.4	310179	305880	322241	306044
3.5	309823	323720	310166	319526
3.6	306210	323643	323421	306046
3.7	323906	305883	306375	316025
3.8	306212	305884	306376	306048
4.0	317025	317022	317026	317023

SecurShield NH

Thickness	20 PSI 4x4	20 PSI 4x8	25 PSI 4x4	25 PSI 4x8
1.25	342106	342034		
1.5	342685		343053	
2	334736	332885	343055	343056
2.5	335177	332880		
2.6	342686	334822		
3	342687	357423	343058	343059
4	335104	336160	343090	343092
4.5	362180			

SecureShield RapidLock

Size	4x8
2.0	333150
2.6	333151

Insulation

InsulBase Tapered				
Taper Panel	20 PSI 4x4	25 PSI 4x4	Slope	Dimensions
AA	317202	317203	1/8"	0.5" – 1.0"
A	317211	317212	1/8"	1.0" – 1.5"
B	317220	317221	1/8"	1.5" – 2.0"
C	306511	306581	1/8"	2.0" – 2.5"
D	306512	306582	1/8"	2.5" – 3.0"
E	306513	306583	1/8"	3.0" – 3.5"
F	306514	306584	1/8"	3.5" – 4.0"
FF	317559	317731	1/8"	4.0" – 4.5"
G	317229	317230	1/4"	1.0" – 2.0"
H	306519	306589	1/4"	2.0" – 3.0"
I	306520	306590	1/4"	3.0" – 4.0"
J	323503	306595	3/16"	1.0" – 1.75"
JJ	323504	323505	3/16"	0.5" – 1.25"
K	323507	306596	3/16"	1.75" – 2.5"
KK	323670	323671	3/16"	1.25" – 2.0"
LL	323508	306593	3/16"	2.0" – 2.75"
M	306528	306598	3/16"	3.25" – 4.0"
MM	306524	306594	3/16"	2.75" – 3.5"
Q	317236	317237	1/2"	0.5" – 2.5"
QQ	307425	309523	1/2"	2.5" – 4.5"
X	317246	317247	1/4"	0.5" – 1.5"
XX	323517	323518	1/2"	1.0" – 3.0"
Y	317255	317256	1/4"	1.5" – 2.5"
Z	317263	317264	1/4"	2.5" – 3.5"
ZZ	323548	323544	1/4"	3.5" – 4.5"

Insulation

SecurShield Tapered				
Taper Panel	20 PSI 4x4	25 PSI 4x4	Slope	Dimensions
AA	317208	317209	1/8"	0.5" – 1.0"
A	317217	317218	1/8"	1.0" – 1.5"
B	317226	317227	1/8"	1.5" – 2.0"
C	310502	316180	1/8"	2.0" – 2.5"
D	319513	324065	1/8"	2.5" – 3.0"
E	319500	316183	1/8"	3.0" – 3.5"
F	319501	316184	1/8"	3.5" – 4.0"
FF	322838	319700	1/8"	4.0" – 4.5"
G	317234	318707	1/4"	1.0" – 2.0"
H	315843	318708	1/4"	2.0" – 3.0"
I	315845	319701	1/4"	3.0" – 4.0"
J	306560	306630	3/16"	1.0" – 1.75"
JJ	306556	323506	3/16"	0.5" – 1.25"
K	306561	306631	3/16"	1.75" – 2.5"
KK	306557	323672	3/16"	1.25" – 2.0"
LL	306558	323509	3/16"	2.0" – 2.75"
M	306563	306633	3/16"	3.25" – 4.0"
MM	306559	321693	3/16"	2.75" – 3.5"
Q	317243	317244	1/2"	0.5" – 2.5"
QQ	319572	310667	1/2"	2.5" – 4.5"
X	317252	317253	1/4"	0.5" – 1.5"
XX	306565	323543	1/2"	1.0" – 3.0"
Y	317261	317262	1/4"	1.5" – 2.5"
Z	317268	317269	1/4"	2.5" – 3.5"
ZZ	323546	324069	1/4"	3.5" – 4.5"

Target Sump	
Panel Size	Product Number
4'x4' Target Q1 Sump .5" – 1.5" 1/2 Slp	329700
4'x4' Target Q2 Sump 1.5" – 2.5" 1/2 Slp	329701
4'x4' Target XX1 Sump 1.0" – 2.0" 1/2 Slp	329740
4'x4' Target XX2 Sump 2.0" – 3.0" 1/2 Slp	329741

Hinged Target Sump	
Panel Size	Product Number
8'x8' Target X Sump .5" – 1.5" 1/4 Slp	318160
8'x8' Target G Sump 1" – 2" 1/4 Slp	318164
8'x8' Target Y Sump 1.5" – 2.5" 1/4 Slp	318168
8'x8' Target Q Sump .5" – 2.5" 1/2 Slp	318162
8'x8' Target XX Sump 1" – 3" 1/2 Slp	318166
8'x8' Target SS Sump .5" – 2" 3/8 Slp	318161
8'x8' Target X Cgf Sump .5" – 1.5" 1/4 Slp	321605
8'x8' Target G Cgf Sump 1" – 2" 1/4 Slp	323103
8'x8' Target Y Cgf Sump 1.5" – 2.5" 1/4 Slp	324084
8'x8' Target Q Cgf Sump .5" – 2.5" 1/2 Slp	322420
8'x8' Target XX Cgf Sump 1" – 3" 1/2 Slp	321485
8'x8' Target SS Cgf Sump .5" – 2" 3/8 Slp	326672

Cover Board

SecurShield HD Composite RapidLock

Size	20 PSI 4x8	20 PSI 4x4
2.0	343085	354460
2.5	341474	355376
3.0	355403	355404
3.5	341617	355407
4.0	355410	355409

SecurShield HD Composite

Size	20 PSI 4x8	20 PSI 4x4
1.5	326391	329775
1.8	357246	333062
2.0	318872	318878
2.5	318830	318879
3.0	318873	318881
3.5	318874	318882
3.6	323690	327872
4.0	318876	318883

HD Polyiso Insulation

Insulation Type	Size	4x8	4x4
Insulbase HD	0.5	332958	334196
Securshield HD	0.5	319294	318075
Securshield HD Plus	0.5	321838	319845
Securshield HD RapidLock	0.5	330920	

StormBase Composite

Thickness	Product Number
1.5	323588
2.0	316650
2.5	316700
3.0	316821
3.5	323383
4.0	323383
4.5	323383

DEXcell Glass Mat

Description	Product Number
¼" 4x8	359946
½" 4x8	359945
⅝" 4x8	359947

DEXcell FA Glass Mat

Description	Product Number
¼" 4x8	359942
½" DEXcell FA Glass Mat 4x8	359944
⅝" DEXcellFA Glass Mat 4x8	359981
¼" DEXcell FA Glass Mat 4x4	359941
½" DEXcell FA Glass Mat 4x4	359943
⅝" DEXcell FA Glass Mat 4x4	359980

DEXcell FA VSH Glass Mat

Description	Product Number
⅝" DEXcell FA VSH Glass Mat 4x8	360241
⅝" DEXcell FA VSH Glass Mat 4x4	360242

DEXcell Cement

Description	Product Number
⅞" DEXcell Cement 4x8	359983
⅞" DEXcell Cement 4x4	359982
⅝" DEXcell Cement 4x8	359949
⅝" DEXcell Cement 4x4	359948

Blue Ridge Fiberboard STRUCTODEK (HP Recovery Board)

Description	Product Number
½" HP Recovery Board 4x8	347331
½" HP Recovery Board 4x4	347330

R-Tech Fan Fold Recovery Board

Description	Product Number
⅜" R-Tech Fan Fold – Type VIII	320831
½" R-Tech Fan Fold – Type VIII	320834
¾" R-Tech Fan Fold – Type VIII	320836
⅜" R-Tech Fan Fold – Type I	320952
½" R-Tech Fan Fold – Type I	320885

Cover Board

DensDeck

Description	Product Number
1/4" 4x8	305074
1/2" 4x8	305077
5/8" 4x8	305075

DensDeck StormX Prime

Description	Product Number
5/8" 4x8	341226
5/8" 4x4	341227

DensDeck PRIME

Description	Product Number
1/4" 4x8	305078
1/2" 4x8	305076
5/8" 4x8	305079
1/4" 4x4	316345
1/2" 4x4	316346
5/8" 4x4	316347

USG SECUROCK UltraLight Coated Glass Mat

Description	Product Number
1/4" Securock Ultralight CG 4x8	333170
1/2" Securock Ultralight CG 4x8	333171
5/8" Securock Ultralight CG 4x8	332672
1/4" Securock Ultralight CG 4x4	332671
1/2" Securock Ultralight CG 4x4	332673
5/8" Securock Ultralight CG 4x4	332674

USG SECUROCK Gypsum Fiber

Description	Product Number
1/4" Securock 4x8	309720
3/8" Securock 4x8	309722
1/2" Securock 4x8	309718
5/8" Securock 4x8	309724
1/4" Securock 4x4	309719
3/8" Securock 4x4	309721
1/2" Securock 4x4	309717
5/8" Securock 4x4	309723

USG SECUROCK UltraLight Glass Mat

Thickness	Product Number
1/4" Securock Glassmat 4x8	318948
1/2" Securock Glassmat 4x8	330156
5/8" Securock Glassmat 4x8	330207

For product numbers for EPS, XPS and Mineral Wood Products please reach out to your Manufacturers Representative.



EXPERIENCE THE CARLISLE DIFFERENCE



800-479-6832 | P.O. Box 7000 | Carlisle, PA 17013 | Fax: 717-245-7053 | www.carlislesyntec.com

01.21.26 © 2026 Carlisle.

REPRINT CODE: 606370 CST-2639 - "Carlisle SynTec Systems Product Reference Guide"

Carlisle, Sure-Flex, Sure-White, Sure-Seal, Sure-Weld, Sure-Tough, Sure-Tite, SeamShield, ReadyFlash, APEEL, InsulBase, OctaGuard XT, HP-X Fastener, InsulFast, Piranha Plate, SecurTAPE, SAT, FAST, FAT, HydroBond, CAV-GRIP, SecurShield, InsulBase, StormBase, X-Tenda Coat, VapAir Seal, RL, and FleeceBACK are trademarks of Carlisle. Hinged Target Sump is a trademark of Hunter Panels. InsulFoam, R-Tech and InsulLam are trademarks of Insulfoam. RhinoBond is a registered trademark of OMG, Inc. LEED is a registered trademark of the U.S. Green Building Council. SECURROCK is a trademark of USG Corporation. DensDeck and DensDeck Prime are trademarks of Georgia Pacific. Galvalume is a trademark of Bethlehem Steel Corp. DuPont is owned by affiliates of DuPont de Nemours, Inc. Anchor Products and U-Anchor are trademarks of Anchor Products, LLC.