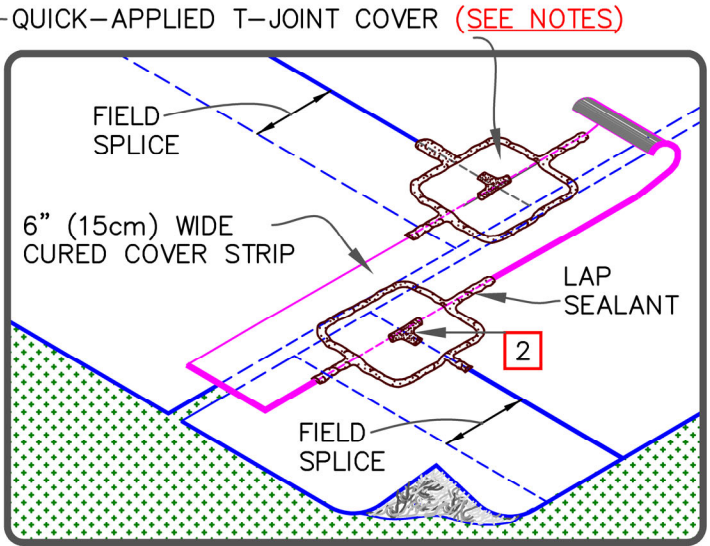
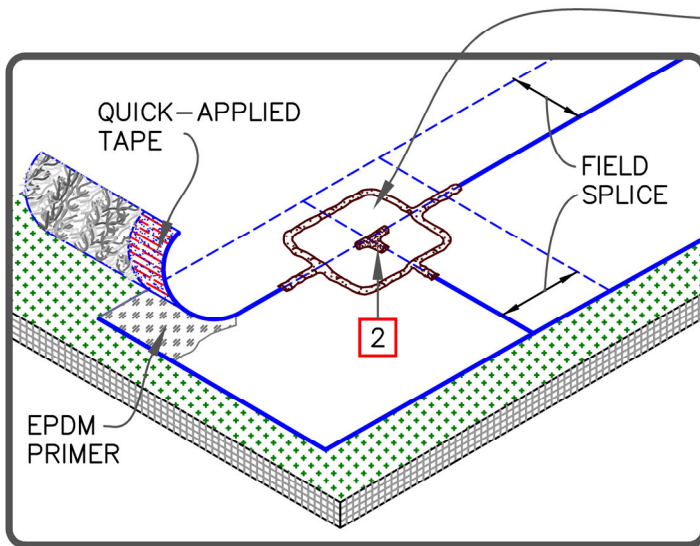
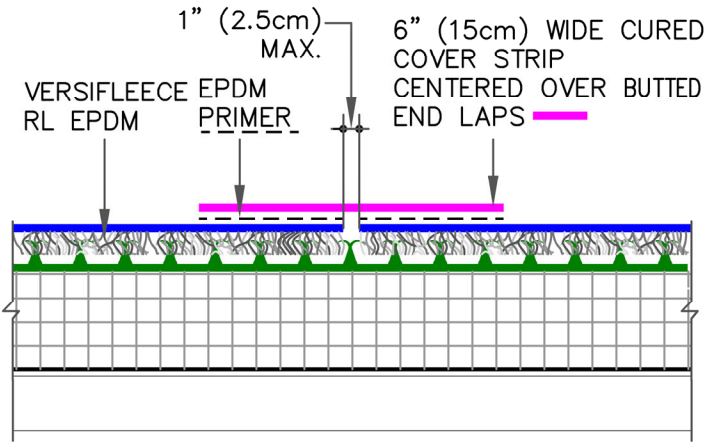
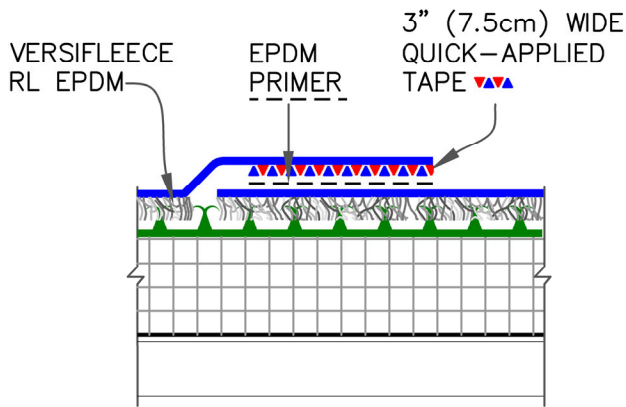


MEMBRANE SPLICE

END LAP SPLICE



NOTES:

1. APPLY EPDM PRIMER TO MEMBRANE SURFACES PRIOR TO INSTALLING QUICK-APPLIED FLASHING AND/OR QUICK-APPLIED SEAM TAPE.
2. APPLY LAP SEALANT ALONG THE EDGE OF THE MEMBRANE SPLICE (UNDER THE 6"x6" (15x15cm) T-JOINT COVER) COVERING THE EXPOSED SPLICE TAPE 1/2" (1.5cm) IN EACH DIRECTION FROM THE SPLICE INTERSECTION.
3. 6" (15cm) QUICK-APPLIED UNCURED EPDM FLASHING MAY ALSO BE CENTERED OVER THE FIELD SPLICE INTERSECTION.

*RAPID LOCK TECHNOLOGY IS MAGNIFIED ON SCALE



RL™ EPDM (RAPID LOCK) MEMBRANE SPLICE—PROJECTS WITH 10, 15 AND 20 YEAR WARRANTIES

