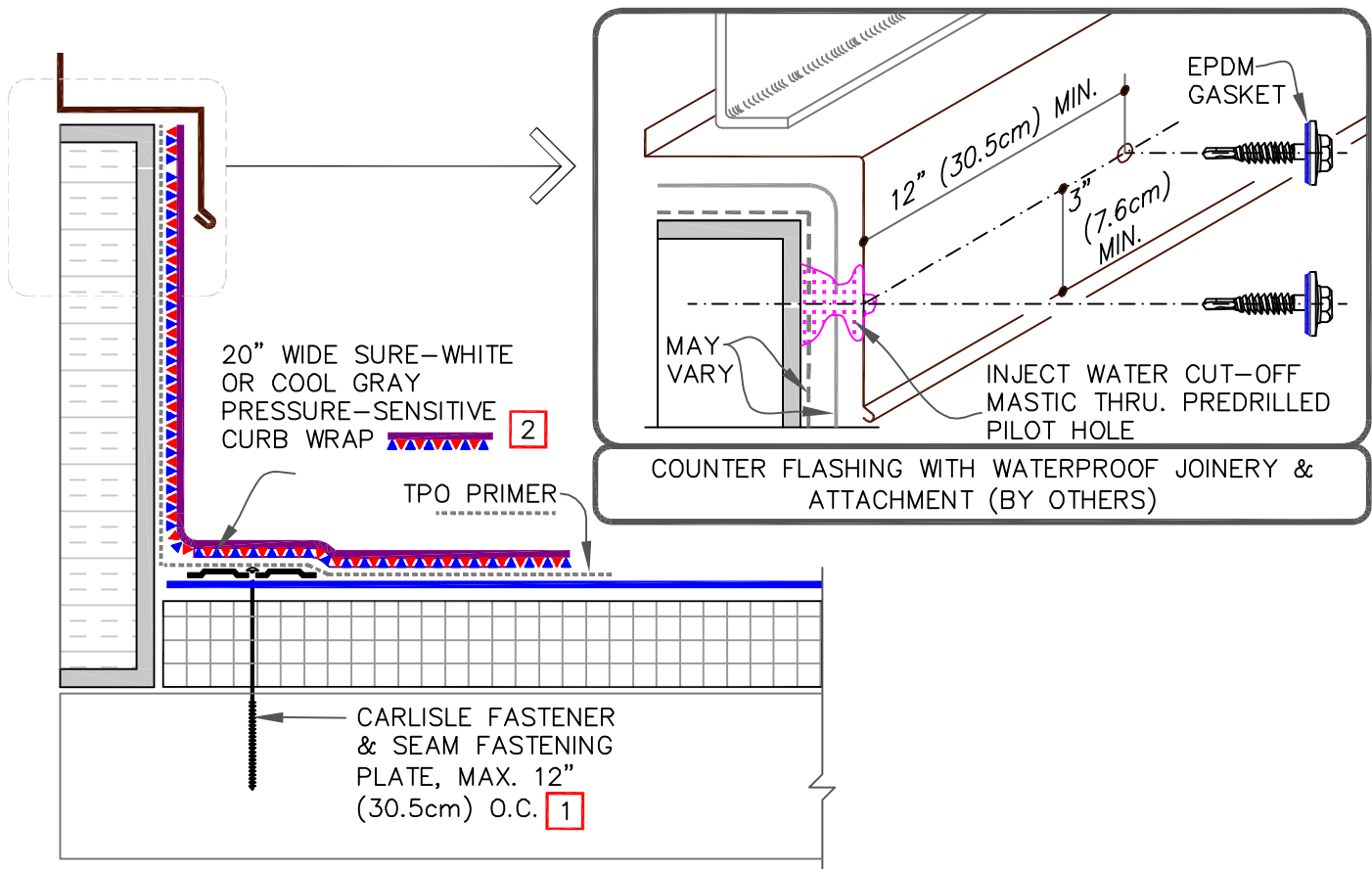


WARRANTY  
REQUIREMENTS

20 YEAR WARRANTY

SEE DETAIL BELOW

25 OR 30 YEAR WARRANTY

REFER TO CARLISLE TYPICAL APPLICABLE TPO DETAIL(S)  
U-5A, U-5B & U-5C FOR REQUIRED CURB DETAIL

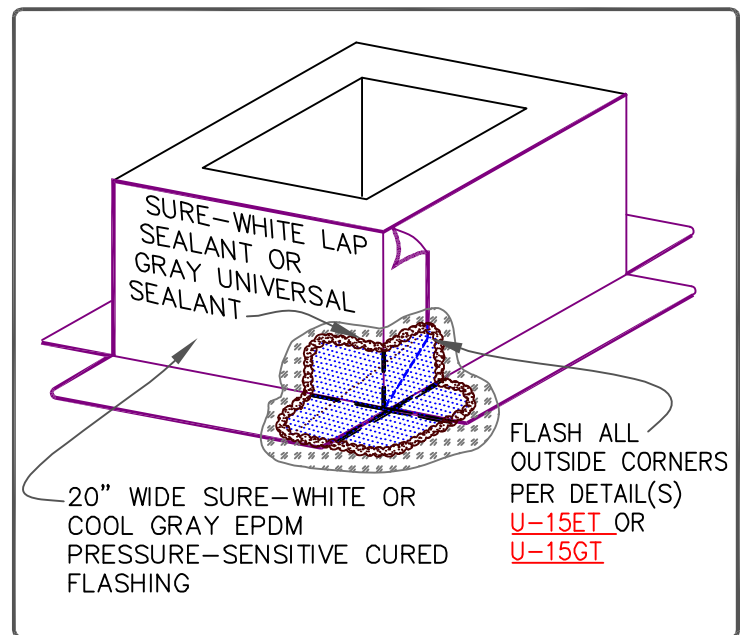
TPO WITH EPDM FLASHING

## NOTES:

1. SEAM FASTENING PLATES/FASTENERS MAY BE INSTALLED INTO THE VERTICAL SUBSTRATE.
2. IF THE VERTICAL SPLICE ON THE CURB FLASHING IS NOT LOCATED AT THE CORNER, A 6" (15cm) WIDE PRESSURE-SENSITIVE UNCURED OR A T-JOINT FLASHING, IN CONJUNCTION WITH TPO PRIMER MUST BE CENTERED OVER FIELD SPLICE AT ANGLE CHANGE.

FASTENER & PRESSURE PLATE TYPES FOR  
DIFFERENT ROOF DECKS

DECK TYPE	OPTION	FASTENER	PLATE
STEEL OR WOOD	A	HP-X	PIRANHA
	B	HP-XTRA	PIRANHA XTRA
STRUCTURAL CONCRETE	A	CD-10	PIRANHA
	B	HD 14-10	PIRANHA

CURB WITH PRESSURE-SENSITIVE  
EPDM CURB WRAP FLASHING

FOR WARRANTY, SEE TABLE ON TOP OF PAGE.



DETAIL NO.

U-5BT