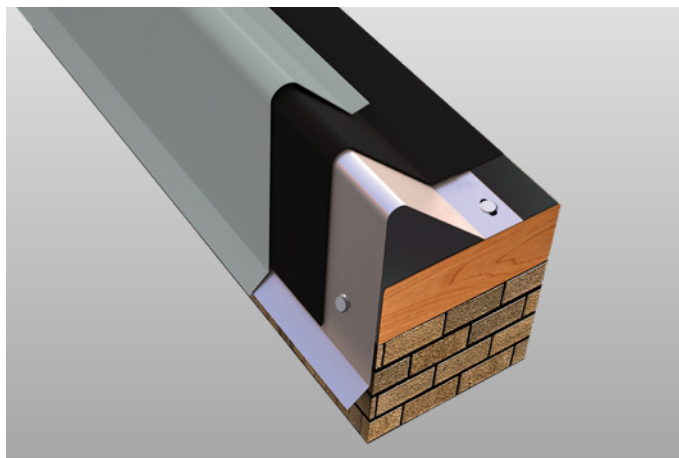


# SecurEdge™ METAL

## Crimp-On Canted Fascia



### Overview

Carlisle's SecurEdge Crimp-On Canted Fascia uses a crimping method for securement for installers who prefer a more traditional approach to edge flashing details. It features dual attachment points on both the face and roof deck to allow for added flexibility when accommodating roof irregularities. With no exposed fasteners and no unsightly cover plates, SecurEdge Crimp-On Canted Fascia will complement the building's aesthetics while also being easy to install at a more competitive price than snap-on alternatives.

### Features and Benefits

- » No need for the stripping-in or heat-welding that are typical with other systems
- » Manufactured in 12' lengths with pre-punched fastening holes in the 24GA galvanized waterdam to ensure correct placement and spacing of provided fasteners during installation
- » Factory-fabricated miters and accessories ensure a proper fit and provide a cleaner appearance while eliminating the need for field fabrication
- » ANSI/SPRI/FM 4435/ES-1 tested to comply with International Building Code requirements
- » Factory Mutual approved for wind uplift protection
- » Miami-Dade approved to comply with the High Velocity Hurricane Zone of the Florida Building Code

### Installation

For complete installation instructions, refer to Carlisle specifications and details or visit [www.metalera.com/brands/carlisle](http://www.metalera.com/brands/carlisle).

### Finishes

- » Natural mill-finish aluminum
- » Pre-finished Kynar® standard and low gloss
- » Premium metallic Kynar
- » Anodized aluminum – clear, dark bronze, and black
- » Drexlume™ – acrylic coated galvalume
- » HDG90 galvanized steel
- » Custom post-painted Kynar finishes available upon request
- » Please consult color chart for color and gauge/thickness availability, non-stock combinations require minimum order and extended lead time

### Quality Assurance

Tested per ANSI/SPRI Test Methods RE-1 and RE-2 for evaluation of membrane securement strength. Fascia shall be certified by Carlisle to design pressures as indicated in current edition of ANSI/SPRI ED-1 Design Standard for Edge Systems Used with Low-Slope Roofing Systems. Meets International Building Code requirements. Miami-Dade approved to comply with the High Velocity Hurricane Zone of the Florida Building Code. Factory Mutual Approved for wind uplift protection.

### Technical Services

Engineering and shop drawings, as well as long-form specifications and CAD details, are available from Carlisle. Product samples, detail sheets, color chips, and color charts are also available for submittal packages. For personal assistance with questions or submittals, contact Carlisle or your local manufacturer's representative.

### Specifications

Face Heights	5" 6.5" 8" 9.5" 11" 12.5"
Cover Materials	22GA Steel 0.040" Aluminum 0.050" Aluminum 0.063" Aluminum

### Warranty

Carlisle's Crimp-On Canted Fascia is warranted in conjunction with the roofing system, in an edge-to-edge warranty up to 30 years with 100-mph windspeeds. A non-prorated 35-year Kynar finish warranty is also available.