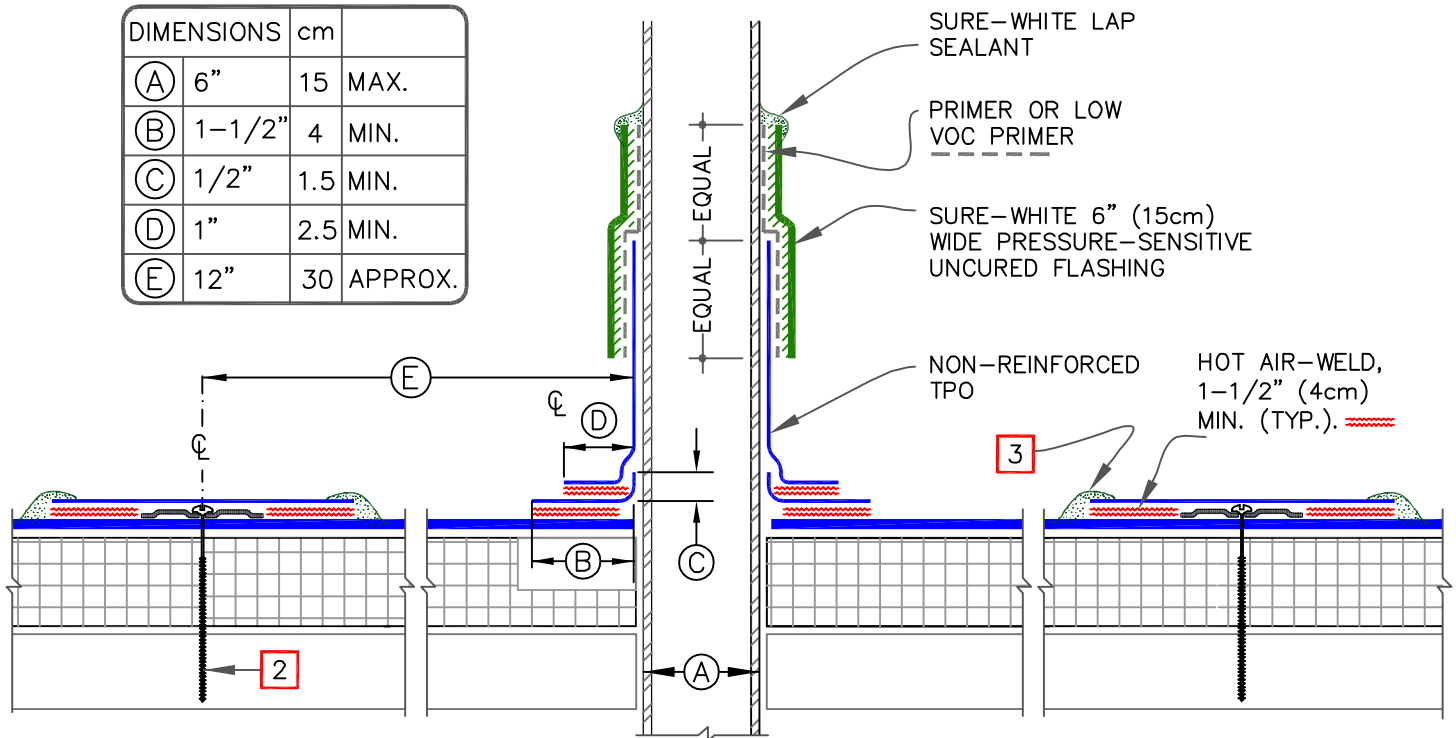


DIMENSIONS	cm	
(A) 6"	15	MAX.
(B) 1-1/2"	4	MIN.
(C) 1/2"	1.5	MIN.
(D) 1"	2.5	MIN.
(E) 12"	30	APPROX.

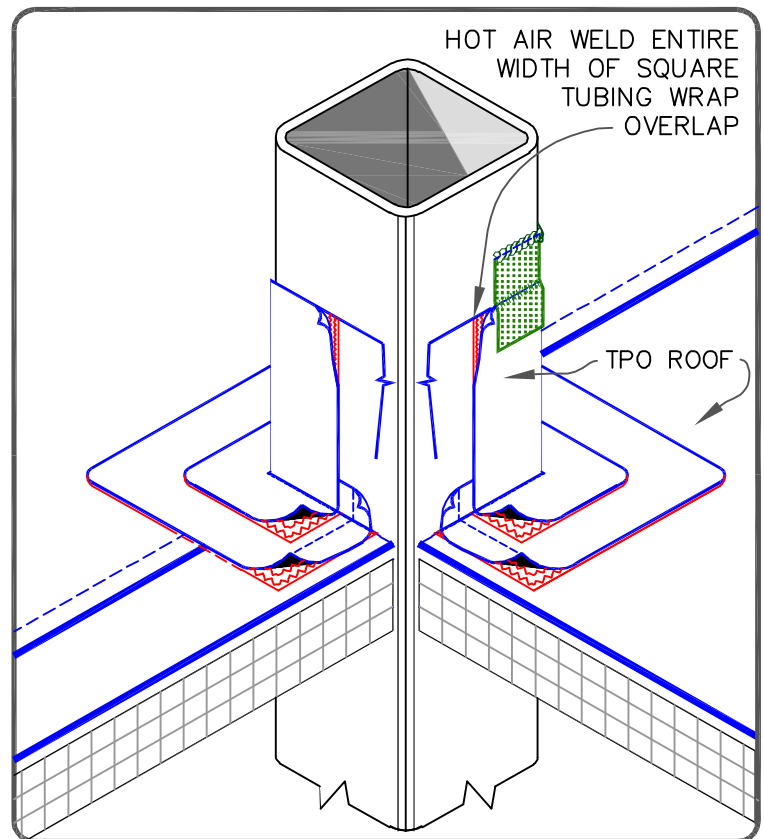


**FASTENER & PRESSURE PLATE TYPES FOR DIFFERENT ROOF DECKS**

DECK TYPE	OPTION	FASTENER	PLATE
STEEL OR WOOD	A	HP-X	PIRANHA
	B	HP-XTRA	PIRANHA XTRA
STRUCTURAL CONCRETE	A	CD-10	PIRANHA
	B	HD 14-10	PIRANHA

#### NOTES:

1. REMOVE ALL EXISTING LEAD AND FLASHING MATERIAL BEFORE INSTALLING PRE-FABRICATED SQUARE TUBE WRAP.
2. CARLISLE FASTENERS & SEAM FASTENING PLATES FOR MECHANICALLY FASTENED SYSTEM (NOT REQUIRED ON ADHERED SYSTEM). SEE TABLE ABOVE.
3. APPROXIMATELY 1/8" (0.5cm) DIAMETER BEAD OF CUT-EDGE SEALANT IS REQUIRED ON CUT EDGES OF REINFORCED TPO MEMBRANE.



FIELD-FABRICATED SQUARE TUBE FLASHING

MAXIMUM WARRANTY: 30 YEARS



DETAIL NO.

U-8D