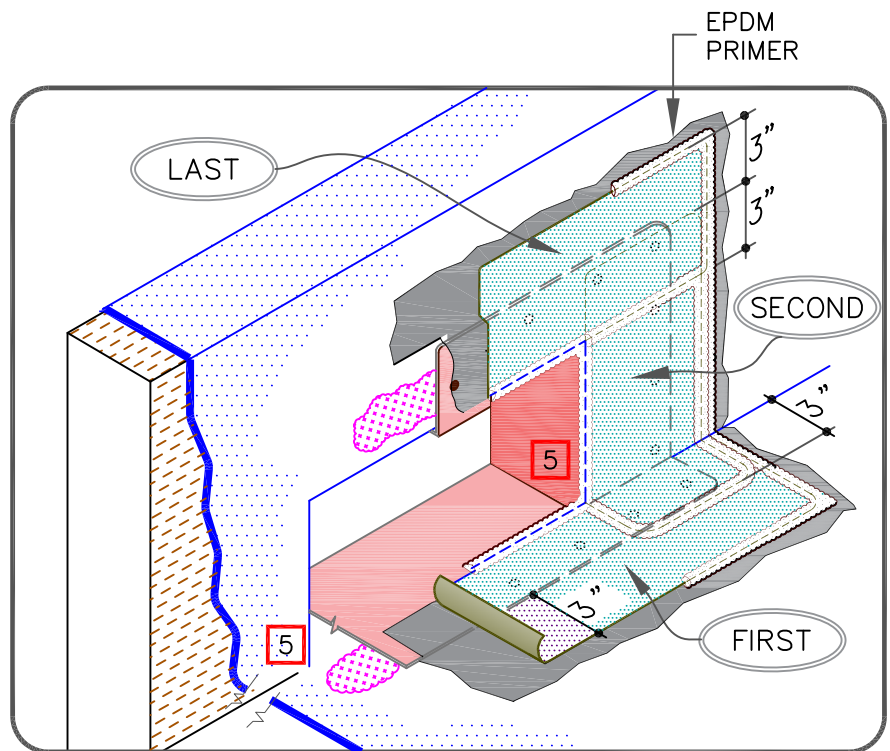


## NOTES:

1. METAL SCUPPER BOX MUST HAVE CONTINUOUS FLANGES WITH ROUNDED CORNERS. SOLDER ALL SCUPPER SEAMS WATER-TIGHT.
2. INSTALL U-15 CORNERS IF SCUPPER BOX DOES NOT HAVE A CONTINUOUS FLANGE.
3. WATER CUT-OFF MASTIC UNDER SCUPPER FLANGES MUST BE UNDER CONSTANT COMPRESSION.
4. CLEAN METAL FLANGE WITH WEATHERED MEMBRANE CLEANER; AND ALLOW TO DRY.
5. SCUPPERS WITHOUT A CONTINUOUS WATERTIGHT DESIGN MUST BE FLASHED IN PER DETAIL U-15 OUTSIDE CORNER.



SCUPPER: SINGLE LAYER FLASHING

MAXIMUM WARRANTY: 25 YEARS



DETAIL NO.

U-18A

U (UNIVERSAL DETAIL)