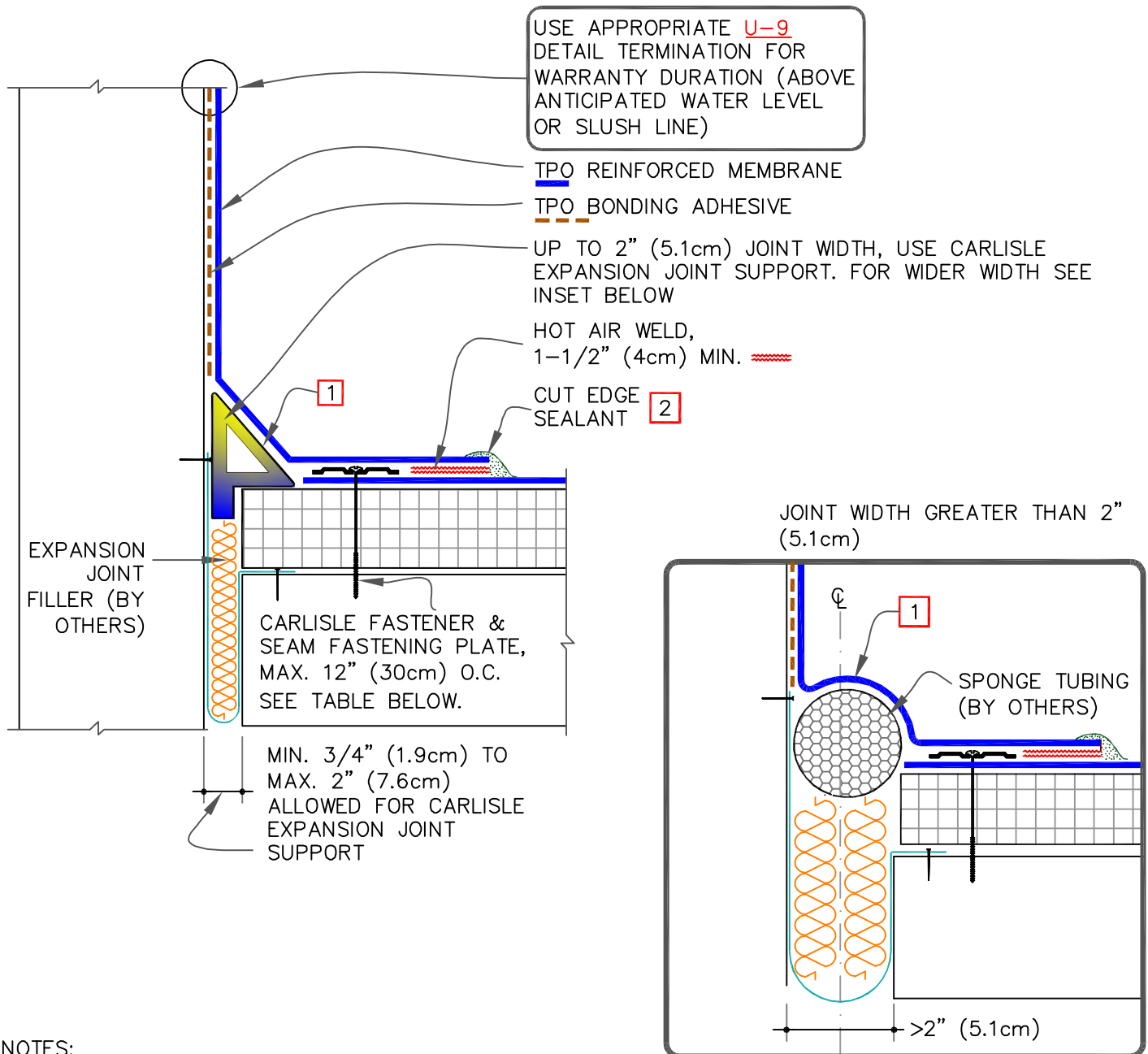


WHEN A WARRANTY WIND SPEED GREATER THAN 90MPH IS SPECIFIED, CARLISLE FASTENERS AND SEAM FASTENING PLATES SHALL NOT EXCEED 6" (15cm) ON CENTER FOR ADHERED MEMBRANE ASSEMBLIES.



NOTES:

- MEMBRANE FLASHING SHALL NOT BE ADHERED OVER THE EXPANSION JOINT SUPPORT OR SPONGE TUBING.
- APPROXIMATELY 1/8" (0.5cm) DIAMETER BEAD OF CUT-EDGE SEALANT IS REQUIRED ON CUT EDGES OF REINFORCED TPO MEMBRANE. PLATES.

FASTENER & PRESSURE PLATE TYPES FOR DIFFERENT ROOF DECKS

DECK TYPE	OPTION	FASTENER	PLATE
STEEL OR WOOD	A	HP-X	PIRANHA
	B	HP-XTRA	PIRANHA XTRA
STRUCTURAL CONCRETE	A	CD-10	PIRANHA
	B	HD 14-10	PIRANHA



DECK-TO-WALL EXPANSION JOINT

MAXIMUM WARRANTY: 30 YEARS



DETAIL NO.

U-3B