

SureTite™ Drip Edge Cleat



Overview

Carlisle SynTec Systems' SureTite Drip Edge Cleat is a continuous, 22-gauge Galvalume® cleat that is available in 12' lengths. This product features pre-punched holes for fasteners spaced 12" on center. The Drip Edge Cleat may be used with the edge metal when Carlisle metal flat sheets are used to shop-fabricate the cover.

The SureTite Drip Edge Cleat may be used for three types of edge profiles: standard drip edge, gravel stop, and flat coping. The cleat is offered in various sizes to accommodate the required wood nailers for the project.

Features and Benefits

- » Prefabricated cleat for consistency and convenience
- » Fasteners included for proper attachment
- » Packaged in 10 piece bundles for easy handling
- » Included in the Total System Warranty
- » Can be delivered with roofing materials
- » Several sizes from 3" to 7" face heights
- » Meets The International Building Code's (IBC) requirements for ES-1 compliance

Warranty

When utilizing Carlisle's SureTite Drip Edge Cleat and Carlisle's shop-fabricated metal flat sheets, the metal edge will be included in the Carlisle Edge to Edge Total System Warranty. Wind speed warranties up to 90 MPH will be available. Face covering must meet Carlisle specifications for fabrication.

Benefits of ES-1 Certification

- » Reduce liability by maintaining International Building Code (IBC) compliance
- » Achieve an edge-to-edge warranty on a Carlisle roof system (up to 20 yr, 90 mph)
- » Receive a 30-year paint finish warranty
- » Obtain project compliance certificates (issued upon request)

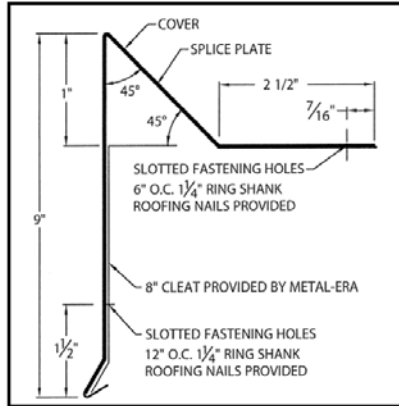
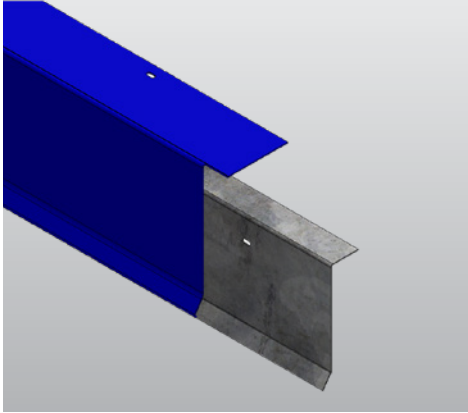
Typical Properties and Characteristics

| | | |
|-------------------------|--|------------|
| Sizes | 3", 5", 6", 7" heights Provided in 12' lengths | |
| Material | 22-gauge Galvalume steel | |
| Face Cover Requirements | Minimum 24-gauge Fabricated to Carlisle specifications (available on the Carlisle website) | |
| Packaging | 10-piece bundles | |
| | Pallet | |
| | Quantity | Weight |
| | 3" – 400 Pcs | 1,744 lbs. |
| | 5" – 250 Pcs | 1,795 lbs. |
| | 6" – 250 Pcs | 2,145 lbs. |
| | 7" – 200 Pcs | 2,000 lbs |

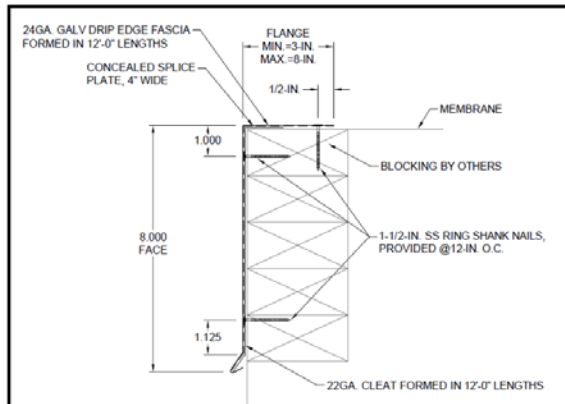
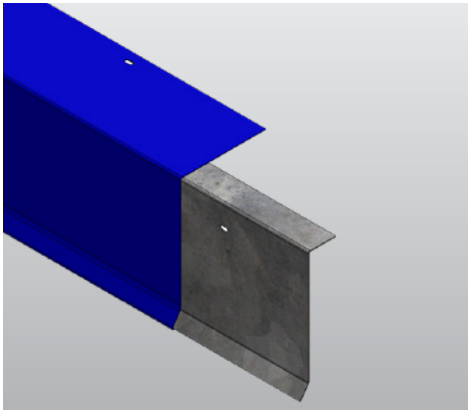
Typical properties and characteristics are based on samples tested and are not guaranteed for all samples of this product. This data and information is intended as a guide and does not reflect the specification range for any particular property of this product.

SureTite Drip Edge Cleat

Gravel Stop Profile



Drip Edge Profile



Flat Coping Profile

