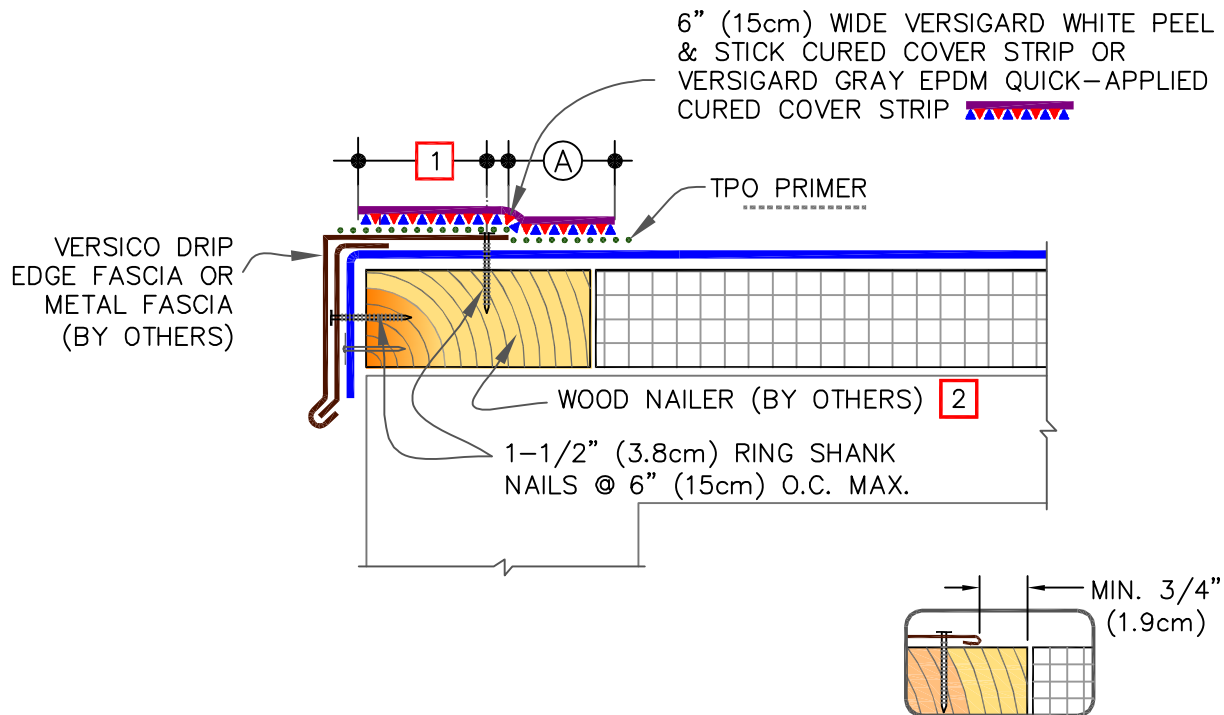


CAUTION

DETAIL NOT FOR USE ON 25 OR 30-YEAR WARRANTY PROJECTS. ACCEPTABLE EDGING SHALL CONFORM WITH TPO UNIVERSAL DETAILS [TPC-1.2, 1.3, 1.4, 1.5 OR 1.6](#)

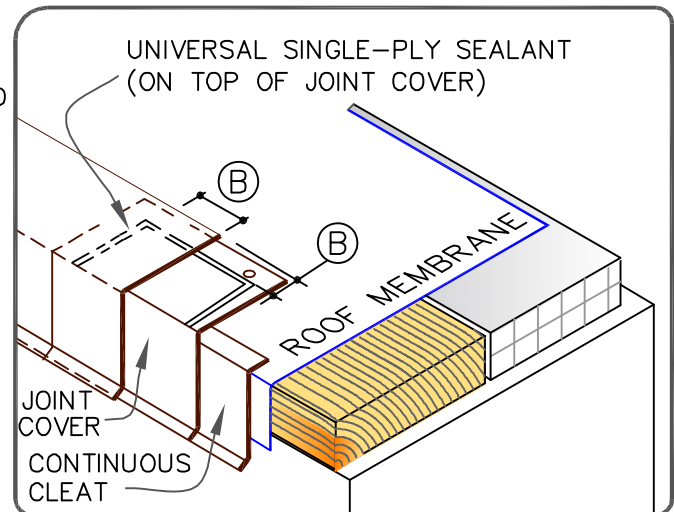


TPO WITH EPDM FLASHING

## NOTES:

- METAL FASCIA DECK FLANGE MUST BE TOTALLY COVERED BY VERSIGARD WHITE PEEL & STICK COVER STRIP WITH MINIMUM 2" (5cm) COVERAGE PAST NAIL HEADS.
- TO REMOVE FINISHING OILS, SCRUB METAL FLANGE WITH WEATHERED MEMBRANE CLEANER; ALLOW TO DRY PRIOR TO APPLYING TPO PRIMER.
- APPLY TPO PRIMER TO METAL FLANGE AND TPO MEMBRANE SURFACE PRIOR TO INSTALLING VERSIGARD WHITE EPDM PEEL & STICK CURED COVER STRIP.
- WHEN METAL FASCIA BY OTHERS IS USED, FASTENER TYPE AND FASTENING FREQUENCY SHALL BE RECOMMENDED BY METAL EDGE MANUFACTURER.
- T-JOINT COVERS ARE REQUIRED AT INTERSECTIONS WITH 60 MIL (1.52mm) OR 80 MIL (2.03mm) MEMBRANE.
- THIS DETAIL IS NOT RECOMMENDED FOR ROOFS THAT ARE LIKELY TO EXPERIENCE SIGNIFICANT SNOW AND ICE UP-SLOPE FROM THE GUTTER /EDGE. REFER TO DETAILS [TPC-1.2](#) OR [TPC-1.3](#).

DIMENSIONS		cm	
(A)	2"	5	MIN.
(B)	1/2 - 1"	1.5-2.5	



VERSITRIM DRIP EDGE FASCIA  
WITH EPDM FLASHING

MAXIMUM WARRANTY: 20 YEARS

— TPO MEMBRANE	PS (PRESSURE SENSITIVE)
— APPROVED SUBSTRATE	P&S (PEEL & STICK)
0 — SEE NOTE	QA (QUICK APPLIED)

THERMOPLASTIC  
ROOFING SYSTEM

TPC-1.1T