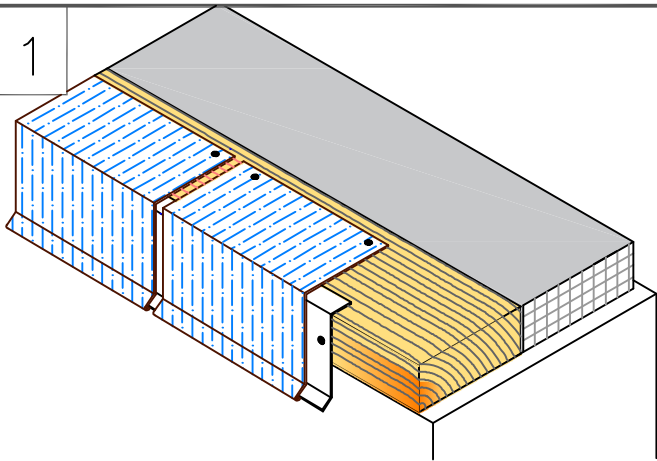
**SEQUENCE:**

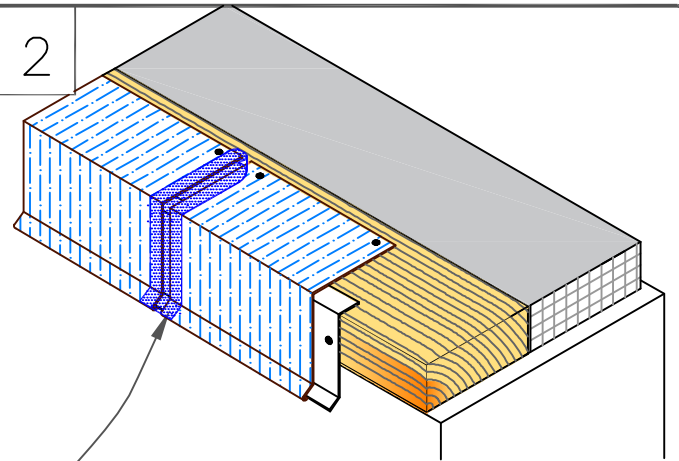
1. 3" (7.6cm) REINFORCED MEMBRANE STRIPPING.
2. FIELD MEMBRANE.
3. TOP 6" (15.2cm) NON-REINFORCED MEMBRANE STRIPPING.

1



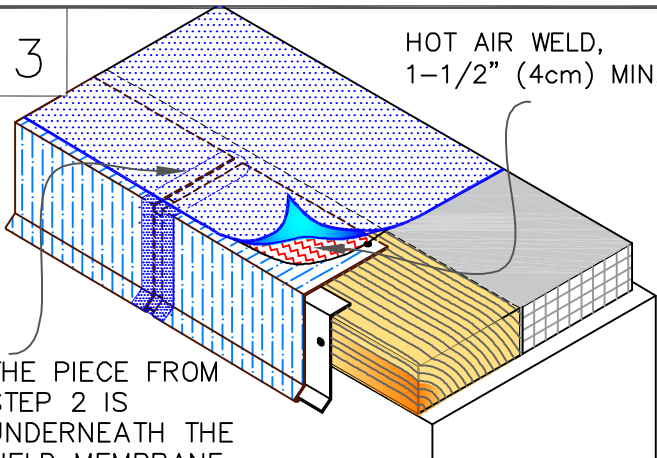
INSTALL CONTINUOUS CLEAT AND COATED METAL WITH 1/8"-1/4" (0.5-1cm) JOINTS BETWEEN ADJOINING SECTIONS.

2



HEAT WELD 3" (7.5cm) WIDE PIECE OF REINFORCED PVC MEMBRANE OVER JOINT

3

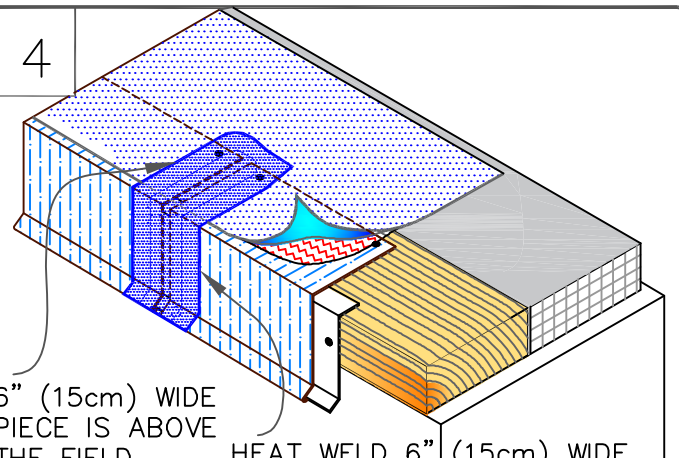


THE PIECE FROM STEP 2 IS UNDERNEATH THE FIELD MEMBRANE

POSITION FIELD MEMBRANE AND HEAT WELD COATED METAL A MINIMUM OF 1-1/2" (4cm) AS SHOWN.

HOT AIR WELD,
1-1/2" (4cm) MIN.

4



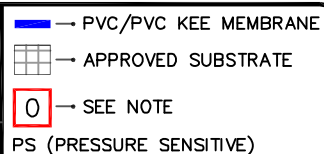
6" (15cm) WIDE PIECE IS ABOVE THE FIELD MEMBRANE ON ROOF

HEAT WELD 6" (15cm) WIDE PIECE OF NON-REINFORCED MEMBRANE OVER JOINT, CENTERED ABOVE STEP 2 PIECE



VERSITRIM HEAT WELDABLE
DRIP EDGE FASCIA

MAXIMUM WARRANTY: 30 YEARS



TPC (Thermoplastic
Common Details)

TPC-1.2