



Sustainable Construction Guide

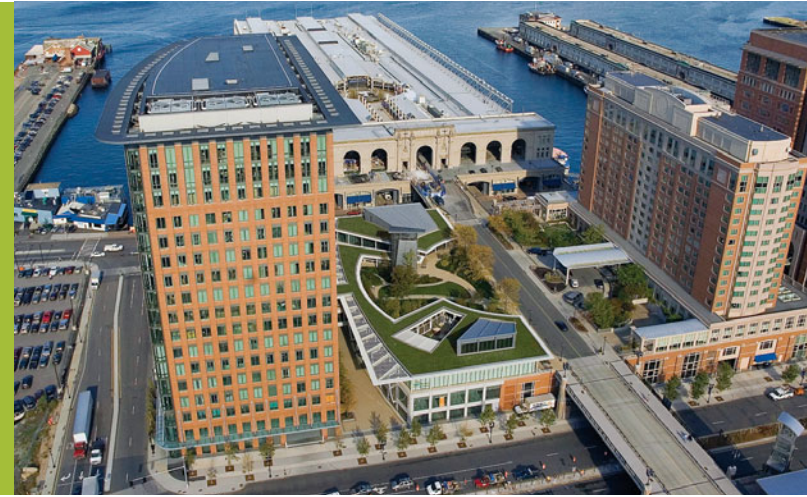


**One Planet. Many Solutions.
One Source.**



One Planet. Many Solutions. One Source.

Carlisle Construction Materials (CCM) is a diversified manufacturer and supplier of premium building products for the commercial and residential construction markets. Carlisle has been a recognized leader in the roofing industry for more than half century, offering high-performance single-ply roofing solutions with industry-leading warranties including EPDM, TPO, PVC, and Roof Garden systems. Carlisle also offers a full line of polyiso and expanded polystyrene insulation as well as a host of steep-slope underlayments. In addition to roofing, CCM divisions service the waterproofing, HVAC, framing, architectural metal, and general construction industries. Every Carlisle company offers sustainable, eco-friendly products that can help to reduce a building's carbon footprint and minimize its energy consumption and costs.



Carlisle SynTec Systems

Carlisle SynTec Systems offers the widest variety of energy-saving roofing products in the industry, including highly reflective Sure-Weld® TPO, Sure-Flex™ PVC, Sure-Flex KEE HP, and Sure-White® EPDM membranes, as well as Sure-Seal® EPDM and Roof Garden systems. Carlisle has a sustainable roofing system for any project, and each system has a corresponding line of labor-saving accessories for faster installations and less wasted material. For more information, call 800-479-6832 or visit www.carlislesyntec.com.

Sure-Weld TPO

- Highly reflective membranes can reduce air conditioning costs in warm climates
- ENERGY STAR®-qualified
- Cool Roof Rating Council (CRRC) listed
- NSF P151 Certified for rainwater catchment system components
- California's Title 24 and LEED® compliant

Sure-Seal EPDM

- Over 50 years of proven performance
- Membrane material warranty terms up to 40 years
- Ballasted systems provide hail benefits, and ballast and membrane are recyclable
- Can reduce heating costs in cooler climates

Sure-White EPDM

- Requires no special tools or heat welding equipment
- ENERGY STAR-qualified, California's Title 24 compliant, and LEED-compliant for warm climates
- 25-year history of performance
- CRRC listed for warm climates
- Can reduce air conditioning costs in warm climates

Sure-Flex PVC

- Widest selection of PVC membranes in the industry
- ENERGY STAR-qualified, CRRC listed, and California's Title 24 compliant
- Enhanced property characteristics provide long-term weatherability
- Elvaloy® KEE-enhanced and FleeceBACK® membranes available

Skylights and Daylighting

- Reduce energy costs
- Quick return on investment
- Can have a direct impact on well-being, productivity, and overall sense of satisfaction
- SunPath™ tubular and SunWeld™ traditional skylights available

Roof Gardens

- Aid in stormwater management
- Protect roofing membrane from UV exposure and temperature fluctuations
- Shallow, medium, and deep assemblies available
- Growth media offers additional insulating qualities
- Single-source warranties for membrane and vegetation
- Enhanced amenity space

Insulation

- EcoStorm VSH® Cover Board sourced from post-industrial and post-consumer waste streams
- "Red List Free" non-halogenated flame-retardant polyisocyanurate (polyiso) insulation options





Carlisle Coatings and Waterproofing

Carlisle Coatings and Waterproofing Incorporated (CCW) serves the commercial construction industry, providing systems that prevent moisture and water penetration into the building envelope for high-performance structures with low lifecycle costs. For more information, contact CCW at 800-527-7092 or visit www.carlisleccw.com.

Air & Vapor Systems

- Create an airtight building envelope for a healthier indoor environment
- Provide up to 37% savings in annual HVAC energy consumption
- Reduce humidification and dehumidification requirements
- Help reduce and/or eliminate mold infestation
- Enable optimal performance of insulation
- Fire-resistant air & vapor barrier products provide enhanced resistance to high temperatures and flames

Waterproofing Systems

- Wide variety of systems provide premium waterproofing protection for virtually any job, whether above- or below-grade
- Blindsided waterproofing membranes provide easy application for waterproofing against soil retention systems in horizontal and vertical applications

Green Roofs

- Provide superior insulating properties
- Minimize stormwater runoff
- Reduce air pollution and the urban heat island effect

Insulfoam

Insulfoam is the largest provider of engineered expanded polystyrene (EPS) insulation in North America. Offered under the InsulFoam® and R-Tech® brands, these versatile, energy-efficient products are used for roof insulation, wall and sheathing systems, foundation and slab insulation, geofoam applications, OEM garage doors, and other building and construction applications. For more information, contact Insulfoam at 800-248-5995 or visit www.insulfoam.com.

EPS Insulation

- 100% recyclable
- Contains up to 25% recycled material
- Can contribute toward LEED credits
- ENERGY STAR-qualified
- Stable R-value backed by a 20-year thermal warranty
- Contains no CFCs, HCFCs, or formaldehyde
- Treated products are insect-, mold-, and mildew-resistant
- Does not leach toxic chemicals or heavy metals
- Does not create decomposition gases



Hunter Panels

Hunter Panels manufactures a full line of energy-efficient polyiso insulation panels, including flat, tapered, composites, nailable, and vented nailbase. Polyiso provides excellent thermal efficiency and is suitable for a wide range of applications, including commercial and residential structures, on the roof, or in the wall. Polyiso is lightweight, cost-effective, and provides excellent return on investment with energy savings. For more information, contact Hunter Panels at 888-746-1114 or visit www.hpanels.com.

Hunter Polyiso Products

- Highest R-value per inch of any insulation
- EPA compliant
- Zero ODP expansion agents used
- CFC- and HCFC-Free
- Contain post-industrial recycled content
- Superior fire resistance (FM Class 1 and UL Class A rated)
- Can contribute toward LEED credits
- Forest Stewardship Council-approved wood products available
- ENERGY STAR-qualified





Carlisle WIP Products

Carlisle WIP Products manufactures high-performance underlayments and flashings that provide superior waterproofing protection for virtually any residential or commercial application. Self-adhering Water & Ice Protection (WIP®) roofing underlayments offer premium protection against water and ice damming, and EZ-Flash® provides excellent protection against moisture and air leakage around openings and over joints and cracks. Carlisle WIP Products' roofing, waterproofing, and flashing solutions all offer long-term performance and efficiency. For more information on Carlisle WIP Products, call 800-211-7170 or visit www.carlislewip.com.

WIP Underlayments

- Strong, high-performance membranes designed for use on critical roof areas such as eaves, ridges, valleys, dormers, and skylights
- Quick and easy application with split-release film
- Premium waterproofing protection with enhanced resistance to water and ice damming

EZ-Flash

- Seals around fasteners and penetrations to prevent leaks
- Simple peel-and-stick application saves time and labor
- Resists mechanical damage
- Easy to install, inspect, and repair
- Can be installed on concrete, masonry, gypsum, steel, and wood substrates

Hardcast

Hardcast is the leading pioneer of HVAC sealants and air-distribution hardware, offering the industry's only True Zero VOC Duct Sealant and obtaining UL GREENGUARD Gold status on all water-based liquid sealants. The DynAir and Nexus brands of airflow hardware and closure systems deliver superior functionality and are manufactured with high-grade G90 galvanized steel. From traditional offerings to innovative solutions like Spray-Seal™, RS-100, RE-500, TPO Line Set Wrap, and Pan-Grip, all Hardcast products are designed to provide lasting solutions. Hardcast is focused on training and supporting contractors and installers to ensure that the indoor air quality, thermal comfort, and energy efficiency goals for all projects are met. For more information, contact Hardcast at 877-495-4822 or visit www.hardcast.com.

Adhesives & Sealants

- Exceed all SMACNA pressure and seal class standards
- True Zero VOC Rolled Mastic Sealants
- UL GREENGUARD Liquid Duct Sealants
- Antimicrobial sealed and coated surfaces
- USDA, FDA, and EPA approved
- Efficient application methods for any project

Hardware

- Minimizes leakage before sealing
- Provides precise airflow control
- Increases energy efficiency
- Improves indoor air quality
- Reduces system noise
- G-90 steel and stainless steel
- User-friendly products

Carlisle Architectural Metal

Petersen manufactures PAC-CLAD steel and aluminum roof and wall panels, which possess valuable sustainable traits. PAC-CLAD metal panels can be recycled at the end of their useful life, and some are manufactured with recycled metal. Specifying PAC-CLAD metal cladding products can result in Leadership in Energy and Environmental Design (LEED) credits and other environmental benefits. For more information, call 800-722-2523 or visit www.pac-clad.com.

Drexel Metals is a provider of architectural standing seam metal roofing systems for commercial, institutional, and residential applications. Headquartered in Louisville, KY, Drexel also has additional facilities in MD, PA, CO, and FL. The demand for metal roofs is growing quickly due to the quality, aesthetics, durability, energy efficiency, and low life cycle costs of these systems. In addition to prefabricating products in its facilities, Drexel also offers distributors and installers a field-fabrication program backed by industry-leading training, marketing support, testing, and warranty coverage. For more information, call 888-321-9630 or visit www.drexmet.com.

Metal Roof Systems

- Uses recycled metal
- Offers state-of-the-art photovoltaic laminates to capture solar energy to reduce electric bills
- Sustainable materials and UV reflective pigments help reduce cooling costs and achieve LEED credits

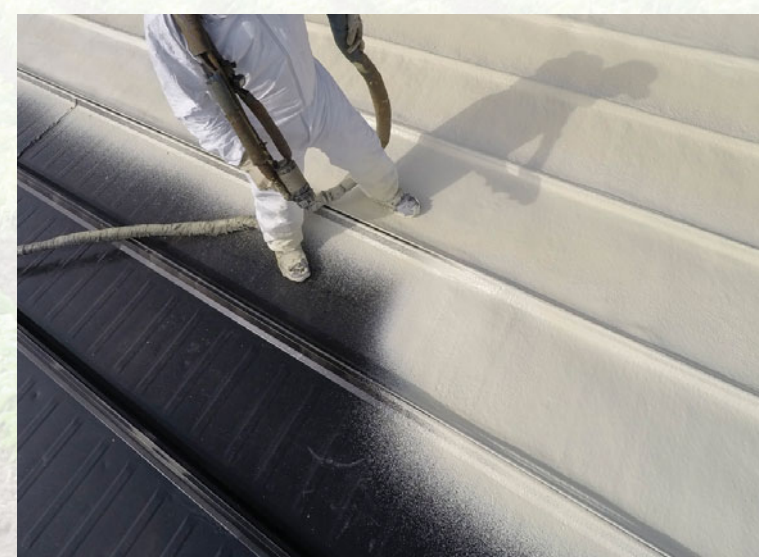
Spray Foam & Coatings

Carlisle Spray Foam Insulation provides high-quality spray polyurethane products for consistent indoor temperature control and optimum energy efficiency. Carlisle's open- and closed-cell spray foam products provide a high R-value per inch, expanding into crevices and cracks to create a precision seal that beats traditional fiberglass, cellulose, and other loose-fill products. Additional benefits include lower heating and cooling costs, improved indoor air quality, and noise reduction. For more information, call 844-922-2355 or visit www.carlisesfi.com.

Carlisle Roof Foam and Coatings offers a broad range of coatings and spray polyurethane foam (SPF) insulations used in commercial applications. SPF roofing systems are designed to provide a long-term, sustainable roofing solution that is seamless, watertight, and virtually maintenance-free. Acrylic and silicone coatings are used as a component of SPF systems and can also be used as standalone products to restore existing aged roofs. Fluid-applied coating restorations require minimal to no tear-off, which means less waste going to landfills. For more information, call 844-922-2355, or visit www.carlislerfc.com.

Spray Foam & Coatings

- Serves as a complete air barrier
- Building owners may lower heating and cooling costs, reducing their carbon footprint





Carlisle Rubber Products

Carlisle Rubber Products offers rubber mats, flooring, and colored EPDM granules that provide high durability, low odor, and superior comfort and sound absorption. All Carlisle Rubber Products are made from 100% recycled rubber and use up to 96% post-consumer waste, keeping 60 million pounds of waste out of landfills every year. Carlisle Rubber Products is the only integrated manufacturer in the world to produce its own tire crumb, colored EPDM, granules, and urethane binders. For more information, call 503-472-4691, or visit www.ultimaterb.com.

Rubber Products

- Made from 100% recycled rubber and/or colored EPDM granules
- Only integrated manufacturer in the world to produce its own tire crumb, colored EPDM, granules and urethane binders
- Uses up to 96% post-consumer waste



Dedicated to environmental stewardship,
innovating sustainable processes,
and inspiring vibrant communities

