

ROOF PARAPET WALL
OR LOW CURB

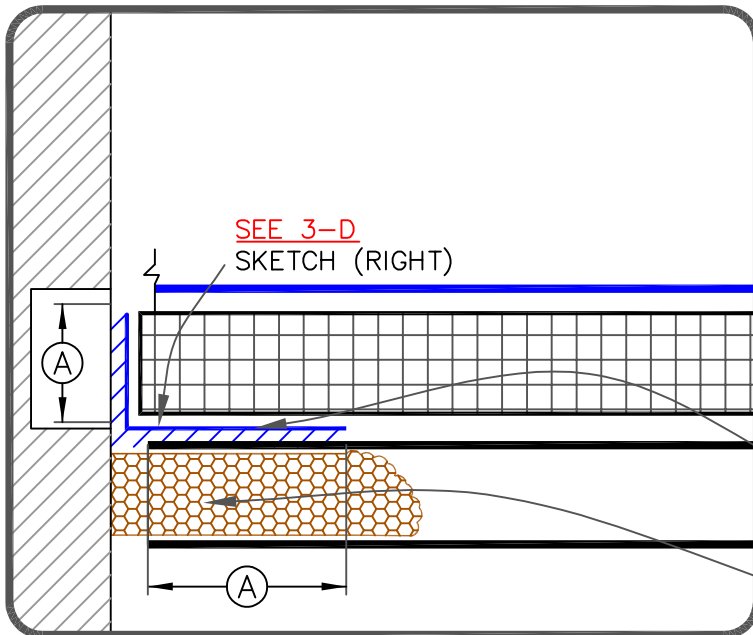
ROOF ASSEMBLY

INSTALL PRESSURE-SENSITIVE
FLASHING OR 725TR AIR & VAPOR
BARRIER ON TOP FLUTES OF METAL
DECK & WALL

HIGH DENSITY CLOSED-CELL
POLYURETHANE FOAM OR FILLER
INSULATION PIECES TO SUPPORT THE
STRIPPING

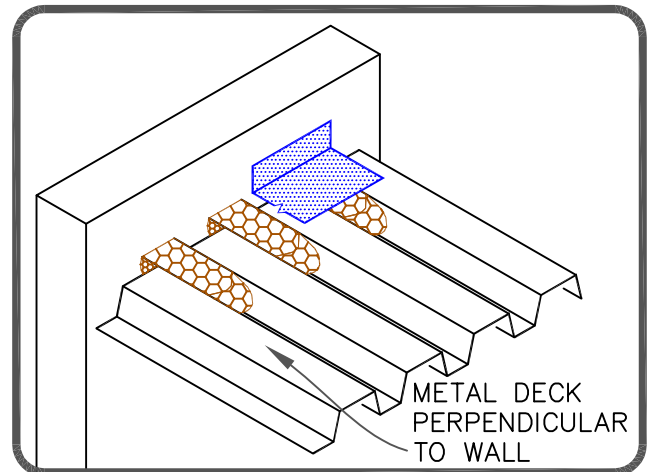
① STEEL DECK WITH FLUTES PARALLEL TO WALL

DIMENSIONS	cm	
(A)	3"	7.5 MIN.



SEE 3-D
SKETCH (RIGHT)

② STEEL DECK WITH FLUTES PERPENDICULAR TO WALL



INSTALL PRESSURE-SENSITIVE
FLASHING OR 725TR AIR & VAPOR
BARRIER ON TOP FLUTES OF METAL
DECK & WALL

HIGH DENSITY CLOSED-CELL
POLYURETHANE FOAM OR FILLER
INSULATION PIECES TO SUPPORT THE
STRIPPING

	MEMBRANE
	APPROVED SUBSTRATE
	SEE NOTE(S)

DECK-TO-WALL AIR INFILTRATION
RESISTANCE BARRIER

For additional information, refer to Specifications



DETAIL NO.

G-01