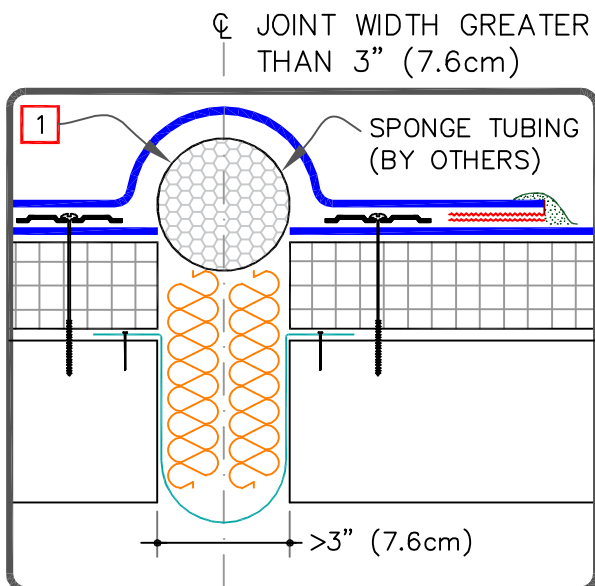


## NOTES:

1. MEMBRANE FLASHING SHALL NOT BE ADHERED OVER THE EXPANSION JOINT SUPPORT OR SPONGE TUBING.
2. WHEN THE EXPANSION JOINT INTERSECTS WITH A COATED METAL DRIP EDGE, THEN COATED METAL SHOULD BE GAPPED AND THE U-1b DETAIL BE FOLLOWED. DRIP EDGE BY OTHERS SHOULD ALSO BE GAPPED.



## FASTENER &amp; PRESSURE PLATE TYPES FOR DIFFERENT ROOF DECKS

DECK TYPE	OPTION	FASTENER	PLATE
STEEL OR WOOD	A	HP-X	PIRANHA
	B	HP-XTRA	PIRANHA XTRA
STRUCTURAL CONCRETE	A	CD-10	PIRANHA
	B	HD 14-10	PIRANHA



DECK-TO-DECK EXPANSION JOINT

MAXIMUM WARRANTY: 30 YEARS



DETAIL NO.

U-3A