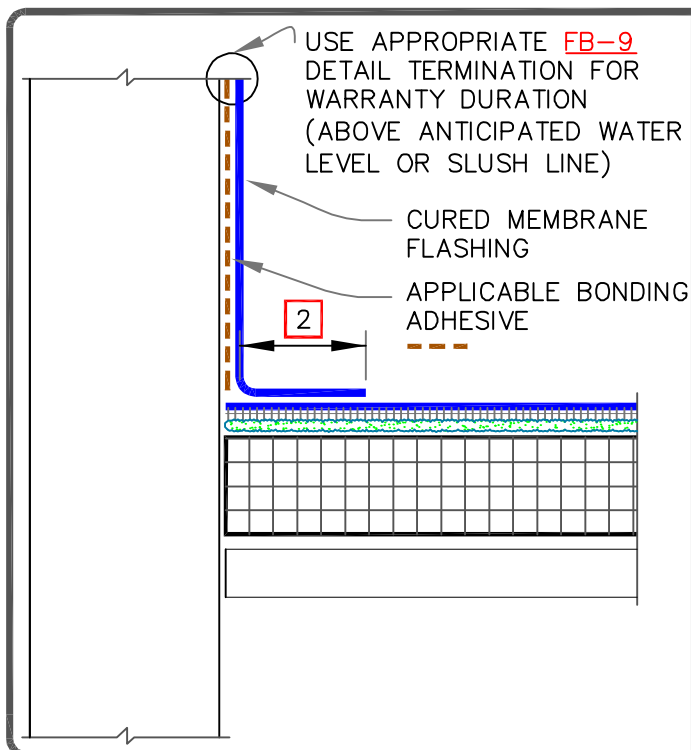
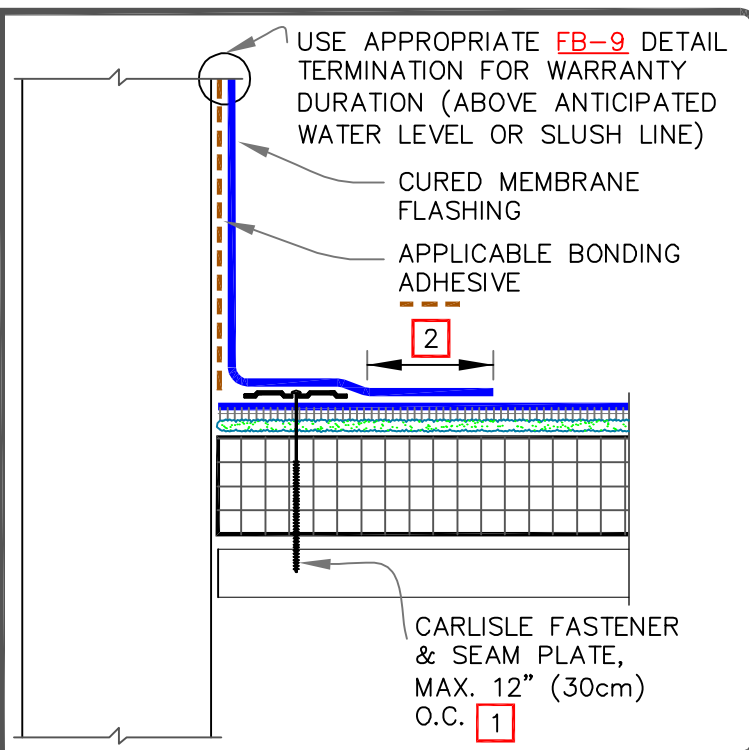







CAUTION

REFER TO [DETAIL FB-12C](#) WHEN USING AQUA BASE 120 ADHESIVE OR HYDROBOND.**WARRANTY
UP TO 20 YEARS****WARRANTY
UP TO 25/30 YEARS**

NOTES:

- MECHANICALLY FASTENED BASE SECUREMENT IS REQUIRED WHEN ANY ONE OF THE FOLLOWING MAY OCCUR:
 - SPECIFIED WARRANTIES GREATER THAN 20-YEARS.
 - WARRANTY WIND SPEEDS GREATER THAN 90MPH.
 - PROJECTS WITH CONTROL OR EXPANSION JOINTS OR ANTICIPATED BUILDING MOVEMENT.
 - WHEN FLEECEBACK MEMBRANE IS INSTALLED DIRECTLY OVER AN EXISTING SINGLE-PLY ROOF.
- SPLICES SHALL BE COMPLETED USING MINIMUM 3" (7.5cm) WIDE SecurTAPE/ PRIMER WITH EPDM MEMBRANE AND MINIMUM 1-1/2" (4cm) HOT AIR WELD WITH TPO/PVC/KEE HP. EPDM MEMBRANE SPLICES SHALL INCORPORATE 6" (15cm) WIDE SECURTAPE FOR PROJECTS WITH 25 AND 30-YEAR WARRANTIES.
- APPROXIMATELY 1/8" (0.5cm) DIAMETER BEAD OF CUT-EDGE SEALANT IS REQUIRED ON CUT EDGES OF REINFORCED TPO MEMBRANE.
- WHEN USING 60 OR 80-MIL REINFORCED THERMOPLASTIC MEMBRANE FLASHING, APPLY A 4-1/2" (11cm) DIAMETER THERMOPLASTIC "T-JOINT" COVER AT ALL FIELD SPLICE INTERSECTIONS.
- ALL EPDM SPLICE INTERSECTIONS [REFER TO FB-2 DETAILS](#).

   	→ FleeceBACK MEMBRANE → APPROVED ADHESIVE → APPROVED SUBSTRATE → SEE NOTE(S)
PARAPET/CURB WITH SEPARATE MEMBRANE – FULL COVERAGE / SPLATTER MAXIMUM WARRANTY: SEE EACH DETAIL	
	DETAIL NO. FB-12A.1A FLEECEBACK ADHERED