

# Fastening and Termination Bars

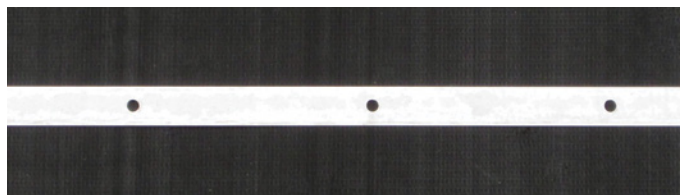


## Polymer Batten Strip

The Polymer Batten Strip is an engineered polymer bar that is used to mechanically attach EPDM membranes per Versico Specifications. The bar is packaged in a 1" x 250' coil that has pre-punched holes every 3" on center. The strip can be easily cut to any desired length. When installing, make sure that all corners of cut strip are rounded. Install the strip using HPV or HPVX Fasteners.

### Typical Properties and Characteristics

Material	Engineered Polymer
Dimensions	1" (25 mm) wide x 250' (76 m) long
Packaging	250 lf (76 m) per carton
Weight	10 lbs (5 kg) carton
Recycled Content	0% pre-consumer recycled content
Manufacturing Location	Addison, IL



## Metal Fastening Bar

The Metal Fastening Bar is a Galvalume™ coated metal that is used to mechanically attach EPDM membranes per Versico Specifications. The bar is packaged in 1" x 10' lengths, 500 linear feet per package and has pre-punched holes every 6" on center. The bar can be easily cut to any desired length. When installing, make sure that all corners of cut bar are rounded. Install the bar using HPVX Fasteners.

### Typical Properties and Characteristics

Material	Galvalume Coated Metal
Dimensions	1" (102 mm) wide x 10' (3 m) long
Packaging	50 pcs; 500 lf (152 m) per carton
Weight	85 lbs (39 kg) carton
Recycled Content	49% pre-consumer recycled content
Manufacturing Location	Cleveland, OH

# Fastening and Termination Bars



## Termination Bar

The Termination Bar is an extruded aluminum bar that is designed for securing and sealing compression type flashing terminations per Versico Specifications. The bar is packaged in 1" x 10' lengths, 250 linear feet per package and has pre-punched holes every 6" on center. This bar features a top edge for ease of applying Versico's Lap Sealant for EPDM installations or Universal Single Ply Sealant for TPO, PVC, and KEE HP installations. The bar can be easily cut to any desired length. When installing, make sure that all corners of cut bar are rounded. Install the bar using HPVX Fasteners, or Term-Bar Nail-In Fasteners.

### Typical Properties and Characteristics

Material	6036-T6 Extruded Aluminum
Dimensions	1" (25 mm) wide x 10' (3 m) long
Packaging	25 pcs; 250 lf (76 m) per carton
Weight	40 lbs (18 kg) carton
Recycled Content	0% pre-consumer recycled content 15% post-consumer recycled content
Manufacturing Location	Cleveland, OH



## Ballast Retaining Bar

The Ballast Retaining Bar is an extruded aluminum bar that is designed as a ballast retaining perimeter securement system, which comes packaged in 4" x 10' lengths, 250 linear feet per package. The ballast retaining bar has pre-punched holes every 6" on center for installation, and also has pre-punched drainage holes every 4" on center.

### Typical Properties and Characteristics

Material	6036-T6 Extruded Aluminum
Dimensions	4" (102 mm) wide x 10' (3 m) long
Packaging	25 pcs; 250 lf (76 m) per carton
Weight	123 lbs (56 kg) carton