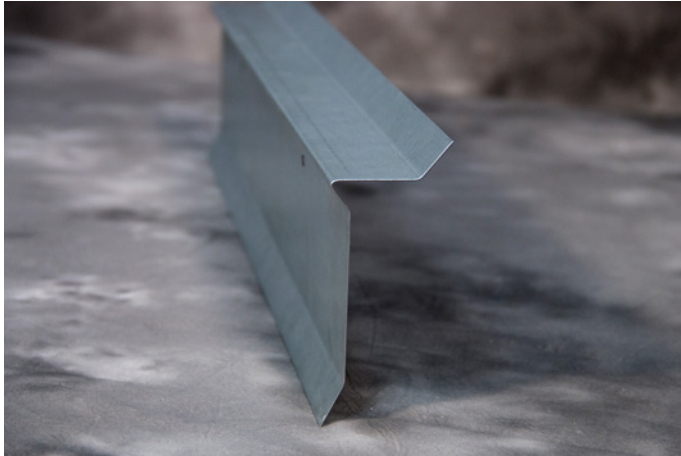


# SureTite™ Snap-On Fascia Cleat



## Overview

Versico Roofing Systems' SureTite Snap-On Fascia Cleat is a continuous, 22-gauge Galvalume® cleat that is available in 12' lengths. This product features pre-punched holes for fasteners spaced 12" on center. The Snap-On Fascia Cleat may be used with the edge metal when Versico metal flat sheets are used to shop-fabricate the cover.

The Snap-On Fascia Cleat may be used for two types of edge profiles: fascia and tapered coping. The cleat is offered in various sizes to accommodate the wood nailers required for the project.

## Features and Benefits

- Prefabricated cleat for consistency and convenience
- Fasteners included for proper attachment
- Packaged in 10-piece bundles for easy handling
- Included in the Total System Warranty
- Can be delivered with roofing materials
- Several sizes from 4 3/4" – 7 3/4" face heights
- Meets The International Building Code's (IBC) requirements for ES-1 compliance

## Warranty

When utilizing Versico's SureTite Snap-On Fascia Cleat and Versico's shop-fabricated metal flat sheets, the metal edge will be included in the Versico Edge to Edge Total System Warranty. Wind speed warranties up to 90 MPH will be available. Face covering must meet Versico specifications for fabrication.

## Benefits of ES-1 Certification

- Reduce liability by maintaining International Building Code (IBC) compliance
- Achieve an edge-to-edge warranty on a Versico roof system (up to 20 yr, 90 mph)
- Receive a 30-year paint finish warranty
- Obtain project compliance certificates (issued upon request)

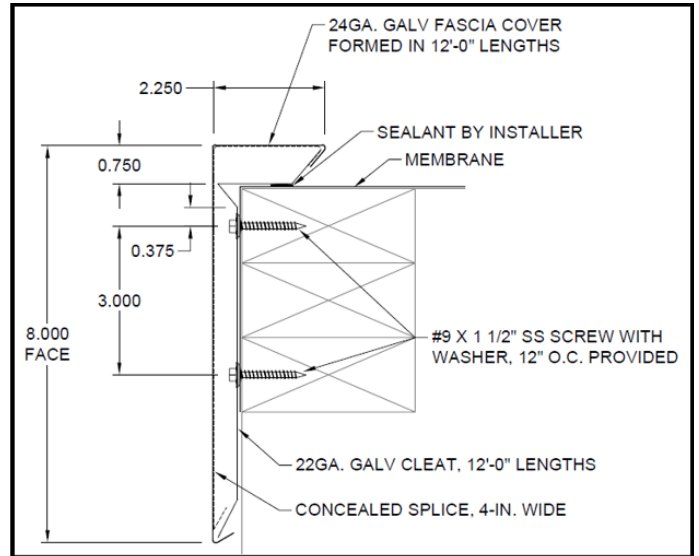
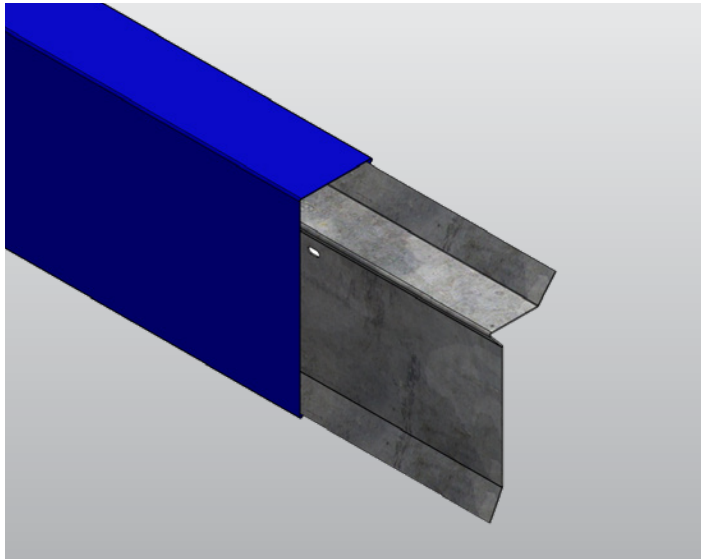
## Typical Properties and Characteristics

|                         |  |            |
|-------------------------|--|------------|
| Sizes                   | 4 3/4", 6 1/4", 7 3/4" heights;<br>Provided in 12' lengths                                     |            |
| Material                | 22-gauge Galvalume steel   |            |
| Face Cover Requirements | Minimum 24-gauge<br>Fabricated to Versico specifications<br>(available on the Versico website) |            |
| Packaging               | 10-piece bundles<br>Screw fasteners to meet 12" on<br>center attachment                        |            |
|                         | Pallet   |            |
|                         | Quantity   | Weight     |
|                         | 4 3/4" – 250 Pcs   | 1,747 lbs. |
| 6 1/4" – 200 Pcs        | 1,814 lbs.   |            |
| 7 3/4" – 200 Pcs        | 2,217 lbs.   |            |

Typical properties and characteristics are based on samples tested and are not guaranteed for all samples of this product. This data and information is intended as a guide and does not reflect the specification range for any particular property of this product.

# SureTite Snap-On Fascia Cleat

## Snap-On Fascia Profile



## Tapered Coping Profile

