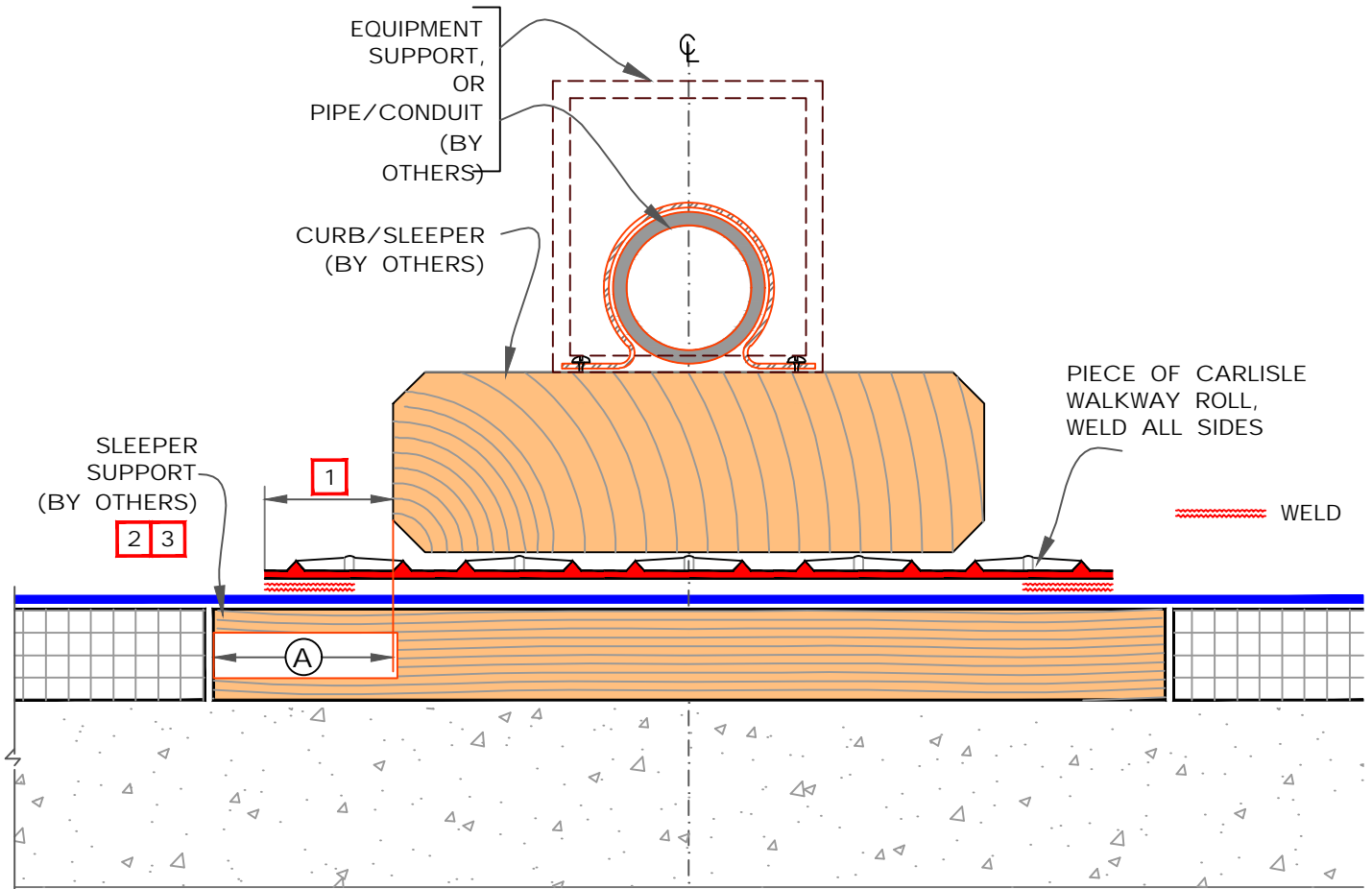


DISCONTINUE WALKWAYS AT FIELD SEAMS AS SHOWN



NOTES:

1. SLEEPER MUST BE LARGE ENOUGH TO SUPPORT WEIGHT OF EQUIPMENT WITHOUT INDENTING INSULATION. EXTEND SLEEPER OUT AS REQUIRED BY STRUCTURAL ENGINEER TO DISTRIBUTE SUBJECT LOAD OR AT LEAST EXTEND OUT MIN. 3" (7.5cm).
2. ENSURE SCREW/ANCHOR HEADS IN TOP SURFACE OF WOOD BLOCKING ARE RECESSED TO PROTECT MEMBRANE.
3. SLEEPER SUPPORT NOT REQUIRED UNDER CONDUIT OR PIPE SUPPORTS.
4. CONSULT STRUCTURAL ENGINEER AND/OR SPECIFIER TO AVOID WATER PONDING DUE TO DECK DEFLECTION.
5. RAISE CONDUITS AND PIPES ABOVE THE REGIONAL SNOW LINE WHEN SLOPE OF THE ROOF CAN LEAD TO SLIDING SNOW.

DIMENSIONS		cm	
(A)	3"	7.5	MIN. ALL SIDES
(B)	8"	20	



SLEEPER

MAXIMUM WARRANTY: 30 YEARS



DETAIL NO.

U- 24

U (Universal Detail)