

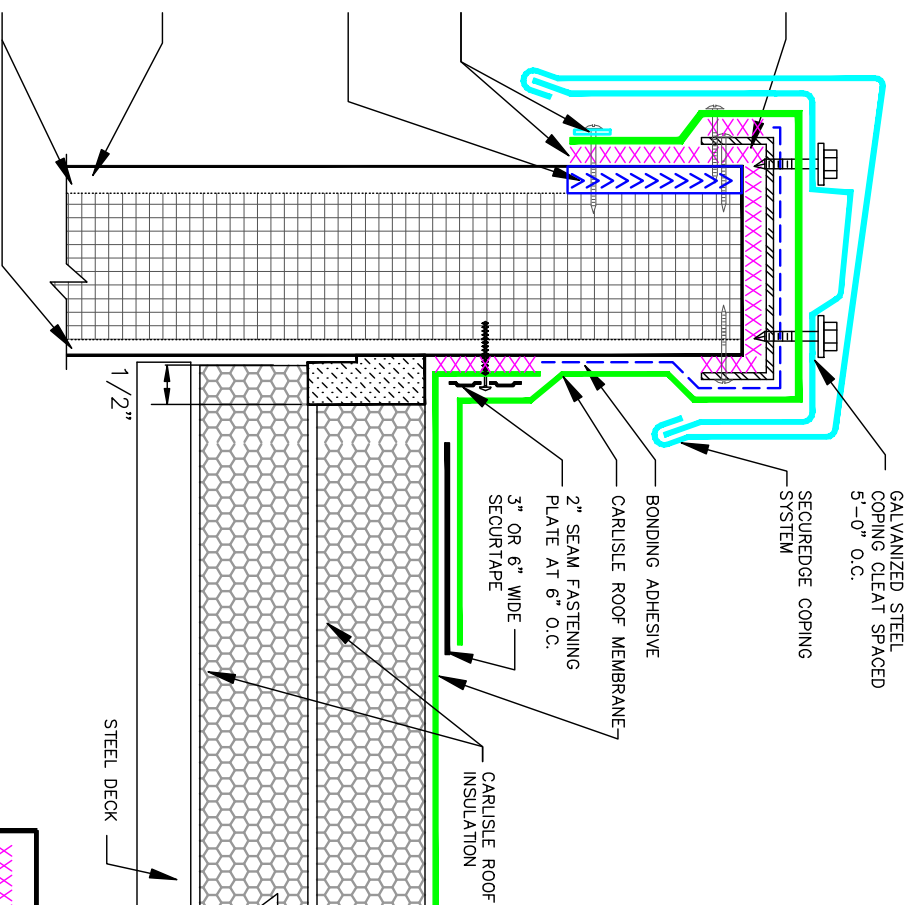
16 GA. GALV. CHANNEL FILLED WITH 3/8" BEAD OF WATER CUT-OFF MASTIC IN WARM SIDE CORNER PRIOR TO SETTING ON PANEL (BY OTHERS), FASTEN WITH #8 X 3/4" TRUSS HEAD TEK SCREWS SPACED 12" O.C. (BOTH SIDES). FASTEN EXTERIOR SIDE OF CAP FIRST SO CAP IS TIGHT TO EXTERIOR OF PANEL

APPLY HEAVY BEAD OF WATER CUT-OFF MASTIC UNDER EDGE OF MEMBRANE; FASTEN SECUREGE ANCHOR BAR WITH #8 X 3/4" TRUSS HEAD TEK SCREWS SPACED 6" O.C. -4" BELOW TOP OF PANEL PROFILE LOWS WITH WATER CUT-OFF MASTIC INCLUDING VOIDS UNDER GALVANIZED CHANNEL

FILL LOWS IN WALL PANEL PROFILE TO BOTTOM OF FLASHING:
 OPTION A: TROWEL-GRADE POLYURETHANE SEALANT IN PANEL LOWS OR
 OPTION B: WATER CUT-OFF MASTIC

INSULATED WALL PANELS (BY OTHERS)

INSULATED WALL PANELS LOWS



DETAIL PROVIDED COURTESY OF
 GROUP 4 MATERIALS, INC.
 BROOKFIELD, WISCONSIN



Carlisle Syntec Incorporated

COLD STORAGE ENVELOPE UNIVERSAL DETAIL - ROOF PARAPET WALL DETAIL

COLD STORAGE DETAILS

CS 2.1.2

XXXXXXX	SURE-SEAL WATER CUT-OFF MASTIC
	FOAM-IN-PLACE INSULATION