

## 12' InsulBase® Flat Polyiso

Carlisle SynTec's introduction of 12' InsulBase flat polyiso brings labor savings and efficiency to get more done in less time. With fewer panels to load onto the roof and less time spent positioning, 12' InsulBase is the most efficient insulation option for large-scale jobs.

### SAVE TIME AND MATERIALS WITH 12' POLYISO

Carlisle SynTec's 12' InsulBase Polyiso will cut your costs on large commercial building projects compared to traditional 8' panels. The 12' panels simplify installation by requiring fewer fasteners, fewer panels, and fewer seams on mechanically attached systems. With a mechanically attached assembly, system fastening patterns can be reduced by 3 fasteners per square when utilizing 12' panels, improving your project's efficiency.

### LOADING AND INSTALLING

Simplify the installation process and logistics of your next commercial project with 12' InsulBase. With these larger panels, each pallet carries 33% more square footage compared to a pallet of 8' panels, with minimal weight differences to consider.

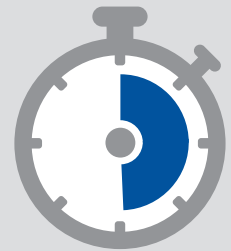
Time comparison of a 96' run utilizing InsulBase Polyiso panels

UP TO A  
**34%** Productivity Boost Compared to Traditional 8' panels



**3:52 Min.**

With 12' InsulBase Polyiso panels



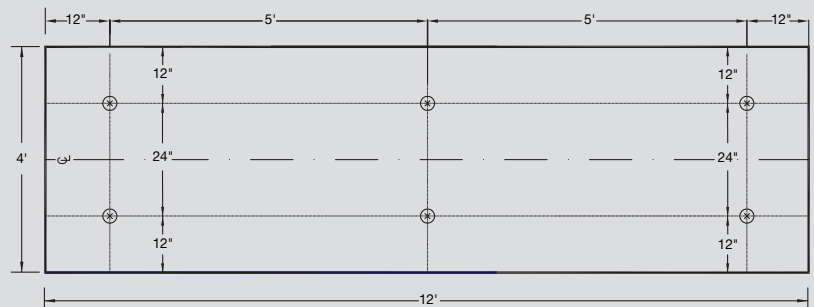
**5:50 Min.**

With 8' InsulBase Polyiso panels

### 20-Year Warranties Available with Reduced Fastener Patterns

Save on fasteners by using only 6 fasteners per 12' board, available for warranties up to 20 years, on both new construction and re-roof projects. See below for typical fastening scenarios based on 1.5" minimum insulation.

For full warranty information and additional fastening patterns for mechanically attached and fully adhered systems, refer to Carlisle Specification.





## THE CHOICE IS YOURS

Take control of your flash-off times by utilizing ReadyFlash® Technology, which is a standard addition on every 12' InsulBase panel. ReadyFlash Technology allows contractors to manipulate adhesive flash-off times by choosing between two different-colored facers, **ReadyFlash** TECHNOLOGY and ultimately make the project more efficient.

- » Utilize the light side of the board on warmer days to create longer flash-off times, and reduce the panel's surface temperature by as much as 5°F.
- » Utilize the dark side of the board on cooler days to increase the surface temperature of the board by up to 25°F.

## ACHIEVE REQUIRED R-VALUES

12' panels are available in a variety of thicknesses to help you achieve state minimum R-values. The larger 12' InsulBase panels also reduce the number of seams and gaps for a more thermally efficient building.

<b>Thickness (in.)</b>	1.50	1.75	2.00	2.20	2.50	2.60	3.00	3.30	3.50
<b>R-Value</b>	8.6	10.0	11.4	12.6	14.4	15.0	17.4	19.2	20.5