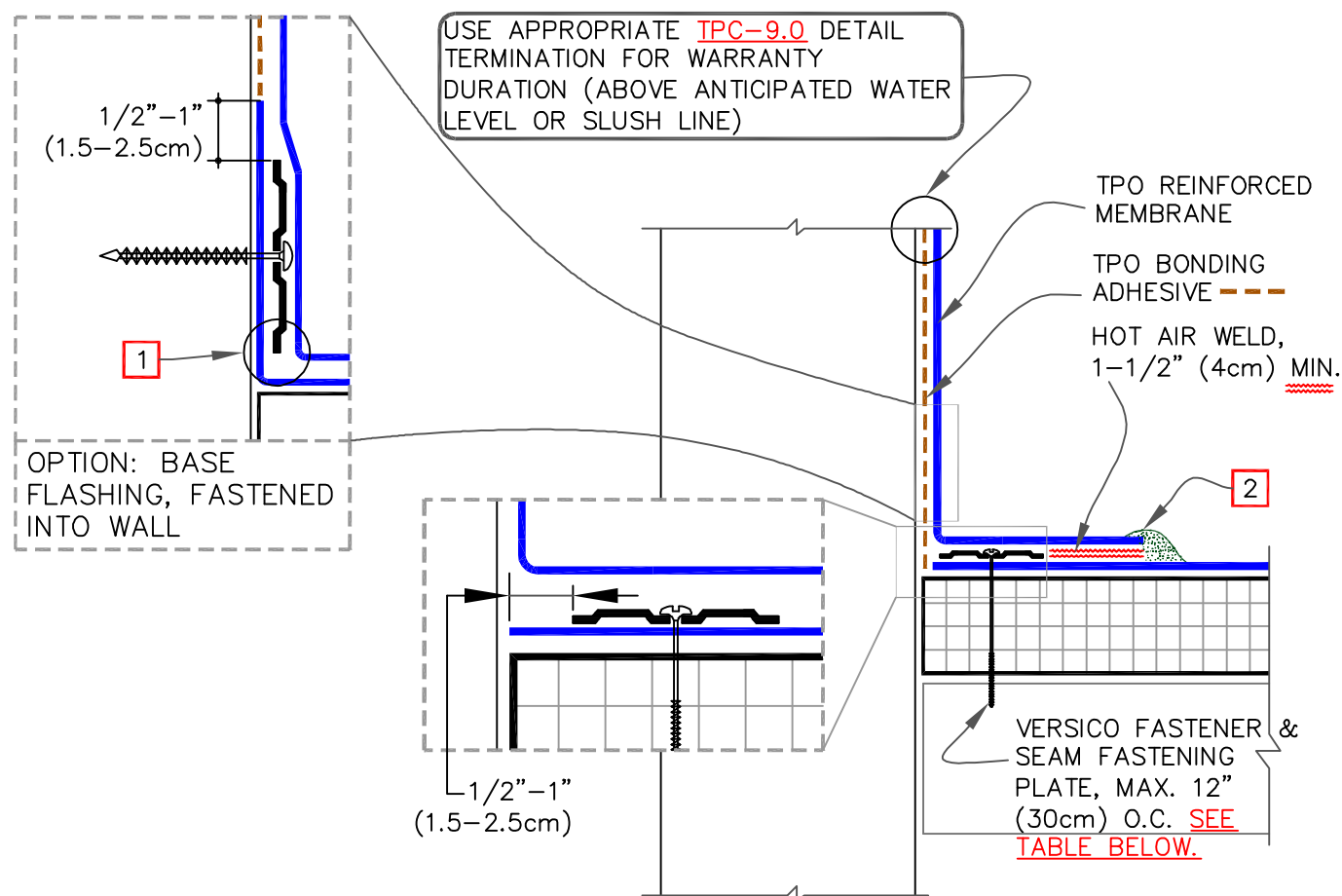


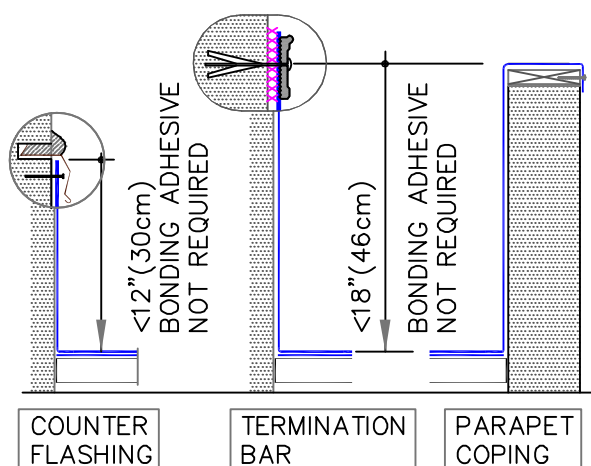
CAUTION

FASTENERS AND PLATES ARE REQUIRED AT 6" (15cm) O.C. FOR ALL SYSTEMS WITH WARRANTY WIND SPEED COVERAGE GREATER THAN 90 MPH AND FOR ALL PROJECTS WITH WARRANTIES GREATER THAN 20 YEARS.



FASTENER & PRESSURE PLATE TYPES FOR DIFFERENT ROOF DECKS

DECK TYPE	OPTION	FASTENER	PLATE
STEEL OR WOOD	A	HPVX	HPVX
	B	HPV-XL	HPV-XL
STRUCTURAL CONCRETE	A	CD-10	HPVX
	B	MP 14-10	HPVX



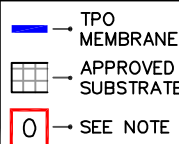
NOTES:

- CARE MUST BE TAKEN TO PRESS THE MEMBRANE TIGHTLY INTO THE ANGLE CHANGE. PLACING THE PLATES TIGHT INTO THE ANGLE CHANGE WILL HELP HOLD THE MEMBRANE IN THE PROPER POSITION.
- APPROXIMATELY 1/8" (0.5cm) DIAMETER BEAD OF CUT-EDGE SEALANT IS REQUIRED ON CUT EDGES OF REINFORCED TPO MEMBRANE.



PARAPET BASE FLASHING FASTENED INTO DECK OR WALL

MAXIMUM WARRANTY: 30 YEARS



PS (PRESSURE SENSITIVE)
P&S (PEEL & STICK)
QA (QUICK APPLIED)

THERMOPLASTIC ROOFING SYSTEM

TPC-12.1