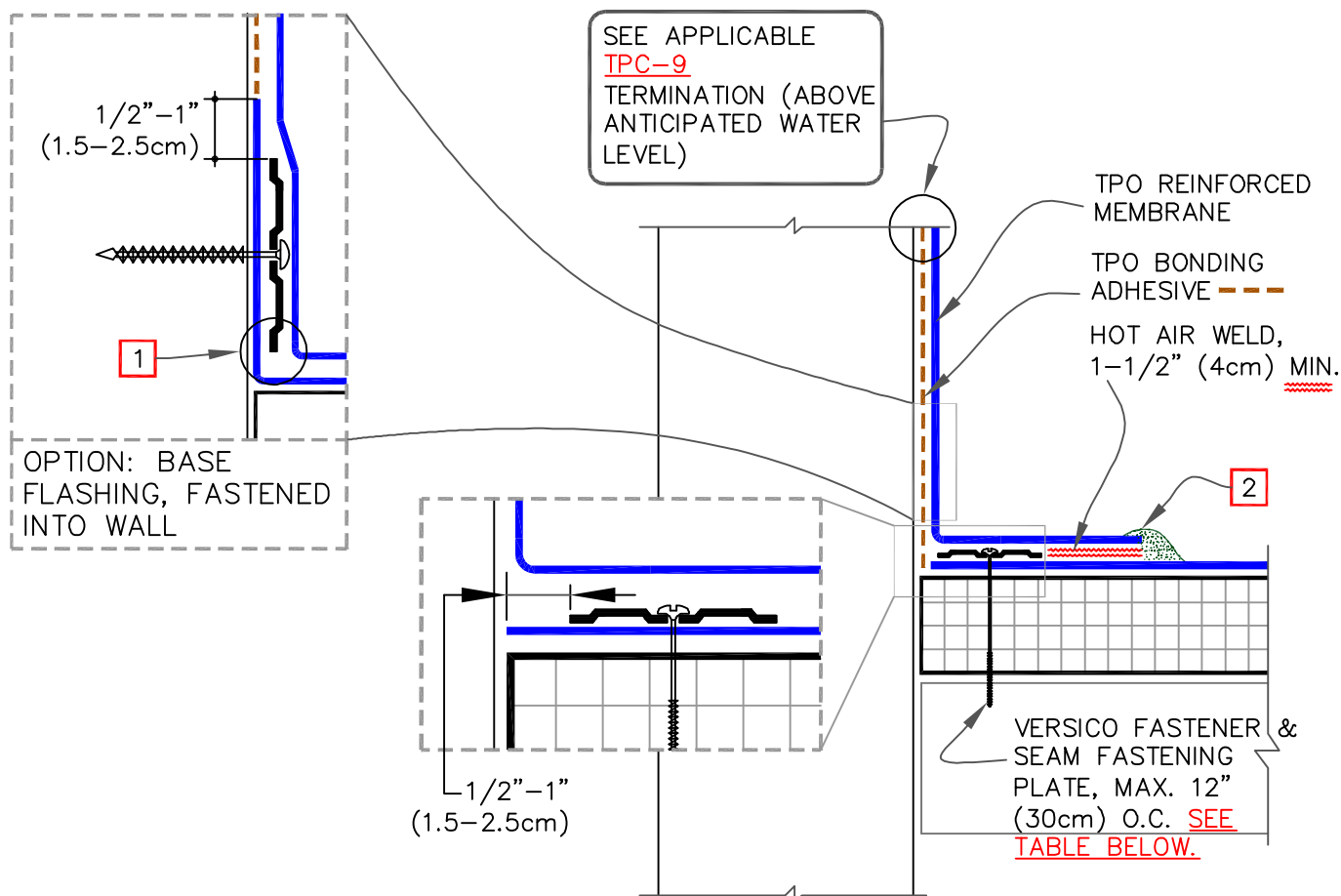


CAUTION

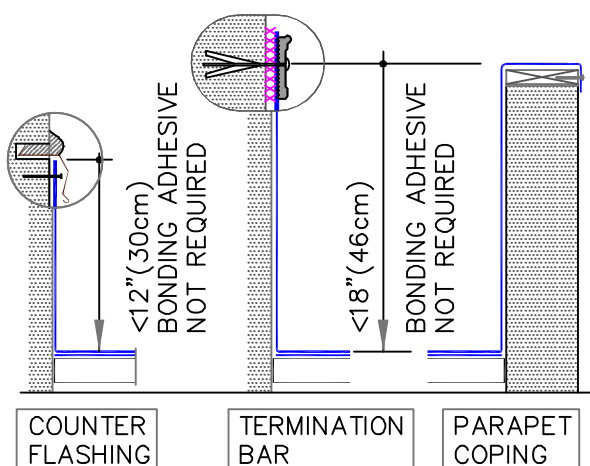
FASTENERS AND PLATES ARE REQUIRED AT 6" (15cm) O.C. FOR ADHERED SYSTEMS WITH WARRANTY WIND SPEED COVERAGE GREATER THAN 90 MPH AND FOR ALL PROJECTS WITH WARRANTIES GREATER THAN 20 YEARS.

SEE APPLICABLE  
TPC-9  
TERMINATION (ABOVE  
ANTICIPATED WATER  
LEVEL)



**FASTENER & PRESSURE PLATE TYPES FOR  
DIFFERENT ROOF DECKS**

DECK TYPE	OPTION	FASTENER	PLATE
STEEL OR WOOD	A	HPVX	HPVX
	B	HPV-XL	HPV-XL
STRUCTURAL CONCRETE	A	CD-10	HPVX
	B	MP 14-10	HPVX



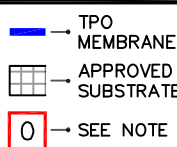
#### NOTES:

- CARE MUST BE TAKEN TO PRESS THE MEMBRANE TIGHTLY INTO THE ANGLE CHANGE. PLACING THE PLATES TIGHT INTO THE ANGLE CHANGE WILL HELP HOLD THE MEMBRANE IN THE PROPER POSITION.
- APPROXIMATELY 1/8" (0.5cm) DIAMETER BEAD OF CUT-EDGE SEALANT IS REQUIRED ON CUT EDGES OF REINFORCED TPO MEMBRANE.



PARAPET FLASHING FASTENED  
INTO WALL

MAXIMUM WARRANTY: 30 YEARS



PS (PRESSURE SENSITIVE)  
P&S (PEEL & STICK)  
QA (QUICK APPLIED)

THERMOPLASTIC  
ROOFING SYSTEM

TPC-12.1