



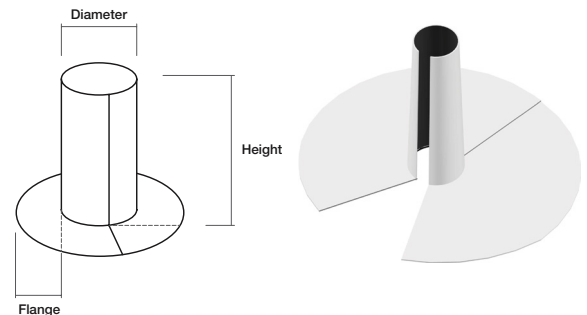
Custom TPO or PVC Accessory Quote Request Form

Contractor Name: _____
 Job Name & Location: _____
 Ship To Address: (Street) _____
 (City/State/Zip Code) _____
 Distributor (bill to): _____

Pipe Seal

Material: TPO PVC
Seam: Open/Split Welded/Closed
Color: White Slate Gray Patina Green (TPO Only)
 Gray Light Gray (PVC only) Rock Brown (TPO Only)
 Tan Medium Bronze (TPO Only) Terra Cotta (TPO Only)

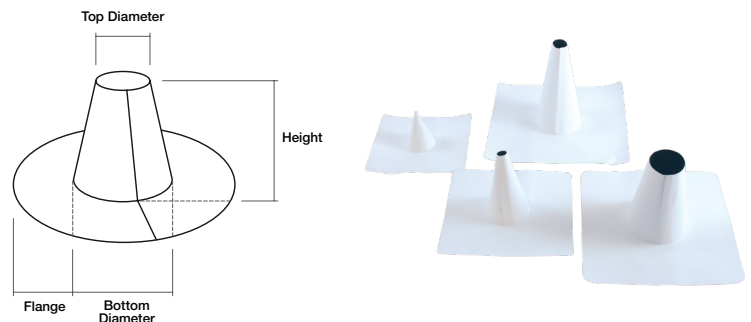
Quantity: _____
Diameter: _____
Height (8" standard): _____
Flange (5" standard): _____



Cone Pipe Seal

Material: TPO PVC
Seam: Welded/Closed
Color: White Slate Gray Patina Green (TPO Only)
 Gray Light Gray (PVC only) Rock Brown (TPO Only)
 Tan Medium Bronze (TPO Only) Terra Cotta (TPO Only)

Quantity: _____
Top Diameter: _____
Bottom Diameter: _____
Height (8" standard): _____
Flange (5" standard): _____



Please submit this form to your Versico distributor.

Custom accessories are made to order and are non-returnable. Please verify all measurements and complete all information for the item(s) you are requesting.
 Actual product may differ slightly from pictures shown. All custom accessories are fabricated from reinforced 60-mil membrane (unless other thickness is specified). All PVC accessories are fabricated using KEE HP, except for slate gray and light gray accessories (standard PVC only). Diameter = Circumference ÷ 3.14

Square Tube Wrap

Material: TPO PVC

Seam: Open/Split Welded/Closed

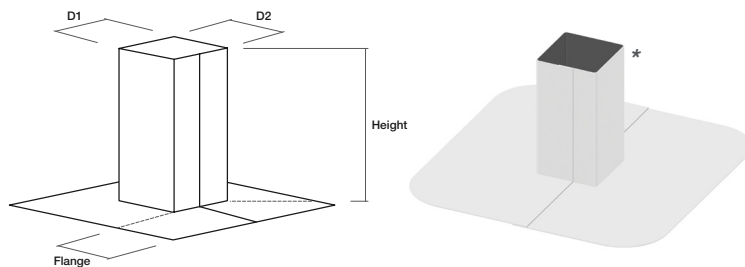
Color: White Slate Gray Patina Green (TPO Only)
 Gray Light Gray (PVC only) Rock Brown (TPO Only)
 Tan Medium Bronze (TPO Only) Terra Cotta (TPO Only)

Quantity: _____

Dimensions: (D1) _____ (D2) _____

Height (8" standard): _____

Flange (5" standard): _____



Max size: 12" x 12". If larger, use curb wrap. ***Pressure-Sensitive Termination Flashing included.**

Curb Wrap

Material: TPO PVC

Type: 1 piece 2 piece 4 piece

Seam: Open/Split Welded/Closed

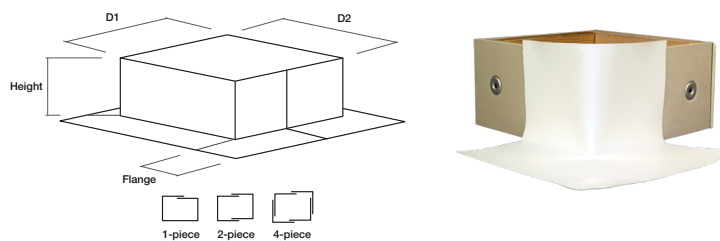
Color: White Slate Gray Patina Green (TPO Only)
 Gray Light Gray (PVC only) Rock Brown (TPO Only)
 Tan Medium Bronze (TPO Only) Terra Cotta (TPO Only)

Quantity: _____

Dimensions: (D1) _____ (D2) _____

Height (12" standard): _____

Flange (6" standard): _____



Min size: 12" x 12"

Scuppers/Drains

Material: TPO PVC

Type: Wall Overflow Wall Deck Level

Color: White Slate Gray Patina Green (TPO Only)
 Gray Light Gray (PVC only) Rock Brown (TPO Only)
 Tan Medium Bronze (TPO Only) Terra Cotta (TPO Only)

Quantity: _____

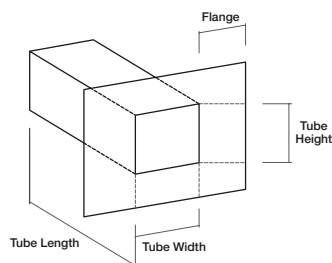
Tube Width: _____

Tube Height: _____

Tube Length: _____

Flange Width: _____

Thru Wall Overflow



Thru Wall Deck Level



Pourable Sealer Pocket

Material: TPO PVC

Color: White Slate Gray Patina Green (TPO Only)
 Gray Light Gray (PVC only) Rock Brown (TPO Only)
 Tan Medium Bronze (TPO Only) Terra Cotta (TPO Only)

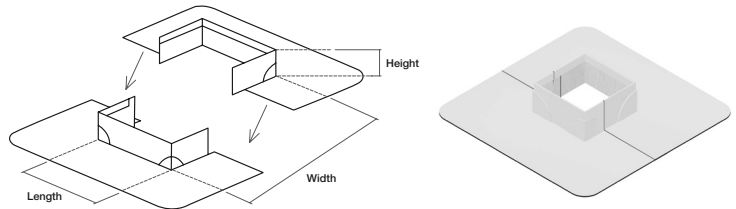
Quantity: _____

Length: _____

Width: _____

Height: _____

(Standard Height: 2")



Louver Vents*

Material: TPO PVC

Color*: White Slate Gray Patina Green (TPO Only)
 Gray Light Gray (PVC only) Rock Brown (TPO Only)
 Tan Medium Bronze (TPO Only) Terra Cotta (TPO Only)

Quantity: _____

Standard Size: 14" x 18" 14" x 24" 14" x 12"
 12" x 18" 12" x 12"
 Bonderized 14" x 18"



Wall Vents*

Material: TPO PVC

Color*: White Slate Gray Patina Green (TPO Only)
 Gray Light Gray (PVC only) Rock Brown (TPO Only)
 Tan Medium Bronze (TPO Only) Terra Cotta (TPO Only)

Quantity: _____

Standard Size: 12" 16" 24"



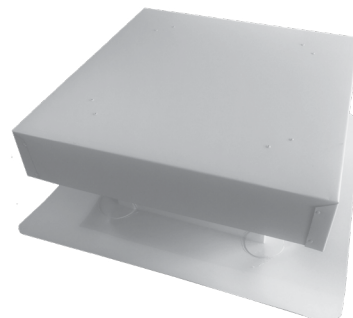
Gravity Vents*

Material: TPO PVC

Color*: White Slate Gray Patina Green (TPO Only)
 Gray Light Gray (PVC only) Rock Brown (TPO Only)
 Tan Medium Bronze (TPO Only) Terra Cotta (TPO Only)

Quantity: _____

Standard Size: 12"x12" 18"x18" 24"x24"



* The vents themselves are white in color. The pre-welded skirt is available in eight color options.

Other Items *Please include detailed description, measurements and sketch of the item below.*

Material: TPO PVC

Color:	White	Slate Gray	Patina Green (TPO Only)
	Gray	Light Gray (PVC only)	Rock Brown (TPO Only)
	Tan	Medium Bronze (TPO Only)	Terra Cotta (TPO Only)

Quantity: _____



A SINGLE SOURCE FOR SINGLE-PLY ROOFING

800.992.7663 • www.versico.com